

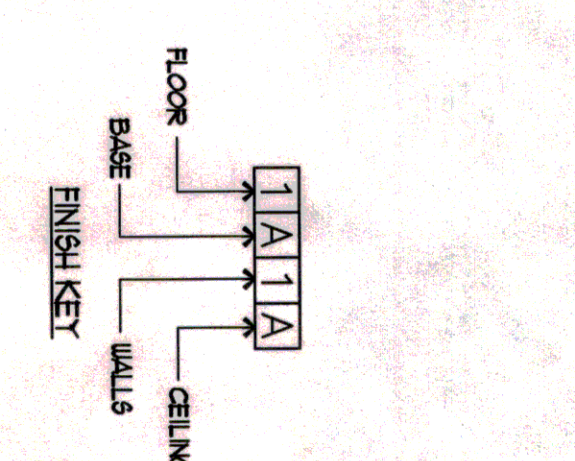
WM 1001 (1/16" X 2-3/4")  
CHAIR RAIL PROFILE

**SPECIALTIES LEGEND**

1	CONCRETE BLOCK	1	CONCRETE BLOCK
2	CONCRETE BLOCK	2	CONCRETE BLOCK
3	CONCRETE BLOCK	3	CONCRETE BLOCK
4	CONCRETE BLOCK	4	CONCRETE BLOCK
5	CONCRETE BLOCK	5	CONCRETE BLOCK
6	CONCRETE BLOCK	6	CONCRETE BLOCK
7	CONCRETE BLOCK	7	CONCRETE BLOCK
8	CONCRETE BLOCK	8	CONCRETE BLOCK
9	CONCRETE BLOCK	9	CONCRETE BLOCK
10	CONCRETE BLOCK	10	CONCRETE BLOCK
11	CONCRETE BLOCK	11	CONCRETE BLOCK
12	CONCRETE BLOCK	12	CONCRETE BLOCK
13	CONCRETE BLOCK	13	CONCRETE BLOCK
14	CONCRETE BLOCK	14	CONCRETE BLOCK
15	CONCRETE BLOCK	15	CONCRETE BLOCK
16	CONCRETE BLOCK	16	CONCRETE BLOCK
17	CONCRETE BLOCK	17	CONCRETE BLOCK

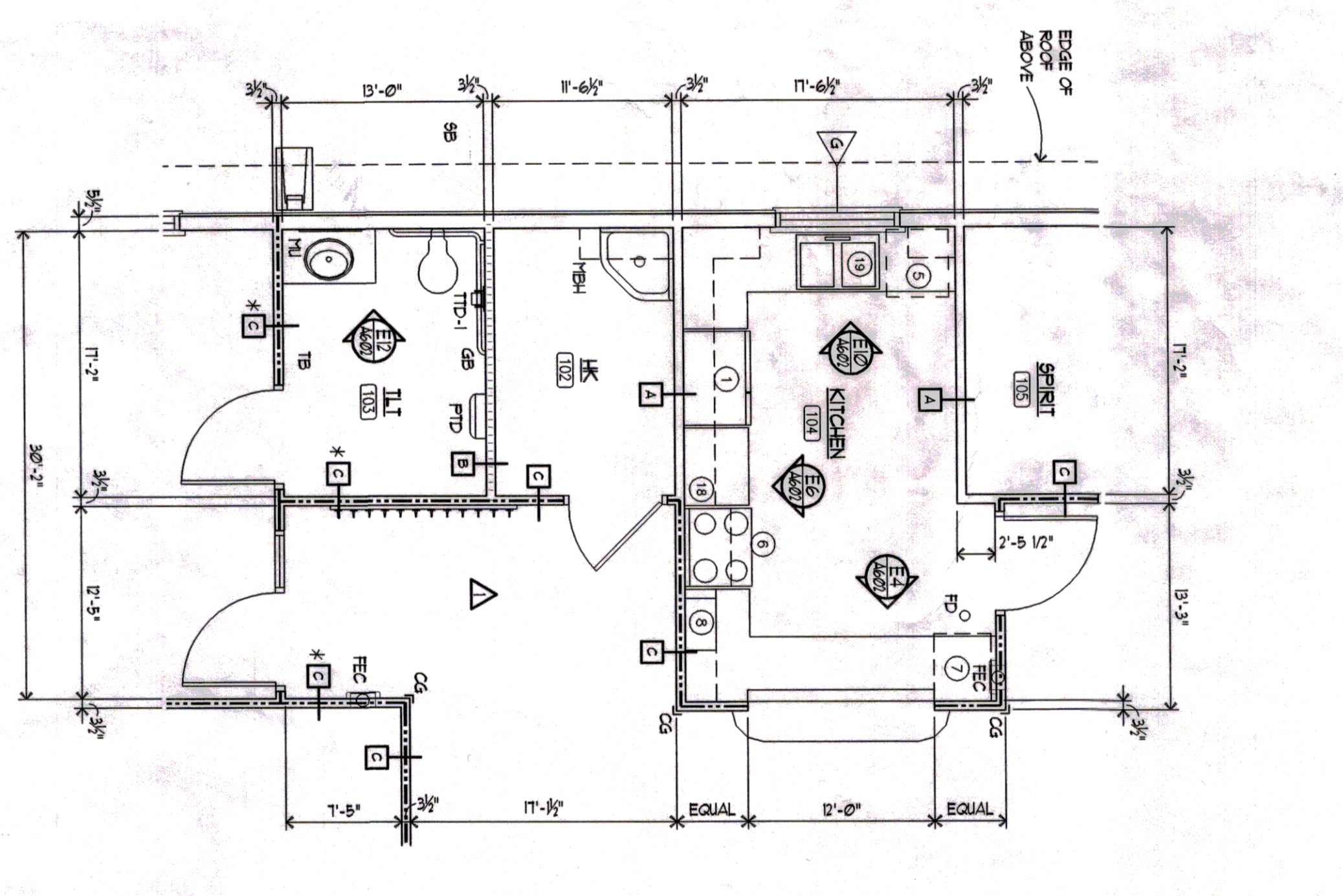
**FINISH LEGEND**

FLOOR	BASE	WALLS	CEILING
1	1	1	1
2	2	2	2
3	3	3	3
4	4	4	4
5	5	5	5
6	6	6	6
7	7	7	7
8	8	8	8
9	9	9	9
10	10	10	10
11	11	11	11
12	12	12	12
13	13	13	13
14	14	14	14
15	15	15	15
16	16	16	16
17	17	17	17

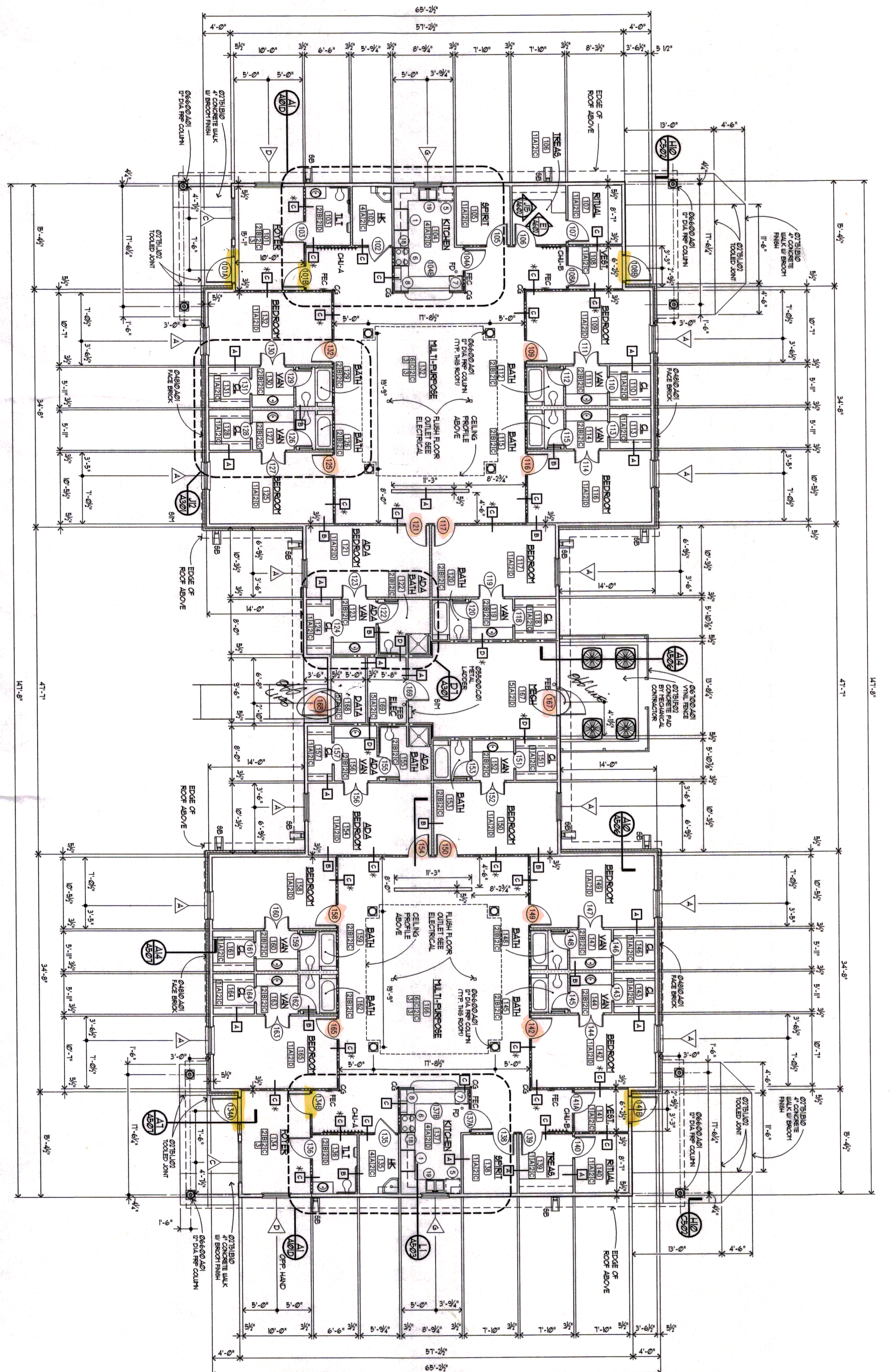


**EQUIPMENT LIST**

NO.	DESCRIPTION	QTY	UNIT
1	REFRIGERATOR	1	EA
2	DISH WASH	1	EA
3	REFRIGERATOR (UNDER COUNTER)	1	EA
4	WATER HEATER	1	EA
5	DISHWASHER	1	EA
6	ICE MAKER (UNDER COUNTER)	1	EA
7	WATER FILTER (UNDER SINK)	1	EA
8	WATER HEATER	1	EA
9	WATER HEATER	1	EA
10	WATER HEATER	1	EA
11	WATER HEATER	1	EA
12	WATER HEATER	1	EA
13	WATER HEATER	1	EA
14	WATER HEATER	1	EA
15	WATER HEATER	1	EA
16	WATER HEATER	1	EA
17	WATER HEATER	1	EA
18	WATER HEATER	1	EA
19	WATER HEATER	1	EA
20	WATER HEATER	1	EA



**A1 ENLARGED FLOOR PLAN**  
1/4" = 1'-0"



**A7 BUILDING "D" - DUPLEX - FLOOR PLAN**  
1/8" = 1'-0"

**MATERIALS KEYING**

DIV. 02 SITE CONSTRUCTION	CONCRETE BLOCK
DIV. 03 MASONRY	CONCRETE BLOCK
DIV. 04 MASONRY	CONCRETE BLOCK
DIV. 05 METALS	CONCRETE BLOCK
DIV. 06 WOOD AND PLASTICS	CONCRETE BLOCK
DIV. 07 PAINTS	CONCRETE BLOCK
DIV. 08 SPECIALTIES	CONCRETE BLOCK
DIV. 09 MECHANICAL	CONCRETE BLOCK
DIV. 10 ELECTRICAL	CONCRETE BLOCK
DIV. 11 FINISH	CONCRETE BLOCK

**WALL TYPES**

1	STUD WALL (NON RATED)
2	STUD WALL (NON RATED)
3	STUD WALL (NON RATED)
4	STUD WALL (NON RATED)
5	STUD WALL (NON RATED)
6	STUD WALL (NON RATED)
7	STUD WALL (NON RATED)
8	STUD WALL (NON RATED)
9	STUD WALL (NON RATED)
10	STUD WALL (NON RATED)
11	STUD WALL (NON RATED)
12	STUD WALL (NON RATED)
13	STUD WALL (NON RATED)
14	STUD WALL (NON RATED)
15	STUD WALL (NON RATED)
16	STUD WALL (NON RATED)
17	STUD WALL (NON RATED)
18	STUD WALL (NON RATED)
19	STUD WALL (NON RATED)
20	STUD WALL (NON RATED)

**GENERAL NOTES**

1. ALL DIMENSIONS ARE TO FACE OF BLOCK AND CONCRETE UNLESS OTHERWISE NOTED.
2. CONSTRUCTION SHALL BE IN ACCORDANCE WITH THE LATEST EDITIONS OF THE INTERNATIONAL BUILDING CODE (IBC) AND ALL APPLICABLE LOCAL ORDINANCES.
3. CONSTRUCTION SHALL BE IN ACCORDANCE WITH THE LATEST EDITIONS OF THE INTERNATIONAL BUILDING CODE (IBC) AND ALL APPLICABLE LOCAL ORDINANCES.
4. CONSTRUCTION SHALL BE IN ACCORDANCE WITH THE LATEST EDITIONS OF THE INTERNATIONAL BUILDING CODE (IBC) AND ALL APPLICABLE LOCAL ORDINANCES.
5. CONSTRUCTION SHALL BE IN ACCORDANCE WITH THE LATEST EDITIONS OF THE INTERNATIONAL BUILDING CODE (IBC) AND ALL APPLICABLE LOCAL ORDINANCES.
6. CONSTRUCTION SHALL BE IN ACCORDANCE WITH THE LATEST EDITIONS OF THE INTERNATIONAL BUILDING CODE (IBC) AND ALL APPLICABLE LOCAL ORDINANCES.
7. CONSTRUCTION SHALL BE IN ACCORDANCE WITH THE LATEST EDITIONS OF THE INTERNATIONAL BUILDING CODE (IBC) AND ALL APPLICABLE LOCAL ORDINANCES.
8. CONSTRUCTION SHALL BE IN ACCORDANCE WITH THE LATEST EDITIONS OF THE INTERNATIONAL BUILDING CODE (IBC) AND ALL APPLICABLE LOCAL ORDINANCES.
9. CONSTRUCTION SHALL BE IN ACCORDANCE WITH THE LATEST EDITIONS OF THE INTERNATIONAL BUILDING CODE (IBC) AND ALL APPLICABLE LOCAL ORDINANCES.

**THE McCARTY COMPANY**  
DESIGN GROUP, P.A.

PROJECT NO: 2005060  
DATE: 21 FEB 2008  
DRAWN BY: jph  
CHECKED BY: TDS  
REVISION/DATE: 15 MAR 2008

MARKING ADDRESS: 5910 KOKO STREET, TUPELO, MS 38802  
OFFICE ADDRESS: 1322 N. MAIN STREET, TUPELO, MS 38804  
TELEPHONE: (662) 844-8400  
FAX: (662) 844-8600



PROJECT TITLE: THE VILLAGE THE UNIVERSITY OF SOUTHERN MISSISSIPPI  
HIL 208-260 HATTIESBURG, MISSISSIPPI

SHEET NUMBER: A101.D