

DAMMON ENGINEERING, INC.

CHIEF ENGINEER
EMMETT
DAMMON, P.E.

CHIEF ARCHITECT
ROBERT
WILTSE

1095 FLORIDA AVENUE
SLIDELL, LA, 70458
OFFICE: 985-649-5832
FAX: 985-641-5950

WEBSITE:
WWW.DAMMONENGINEERING.COM
EMAIL:
DAMMONENG@BELLSOUTH.NET

ARCHITECTURE
ENGINEERING
STUDIES
PLANNING
INVESTIGATION
EXPERT WITNESS

OFFICE
RENOVATION
FOR ST. TAMMANY
PARISH SCHOOLS
SLIDELL, LA

REFLECTED
CEILING PLAN

REV:

SCALE: AS NOTED

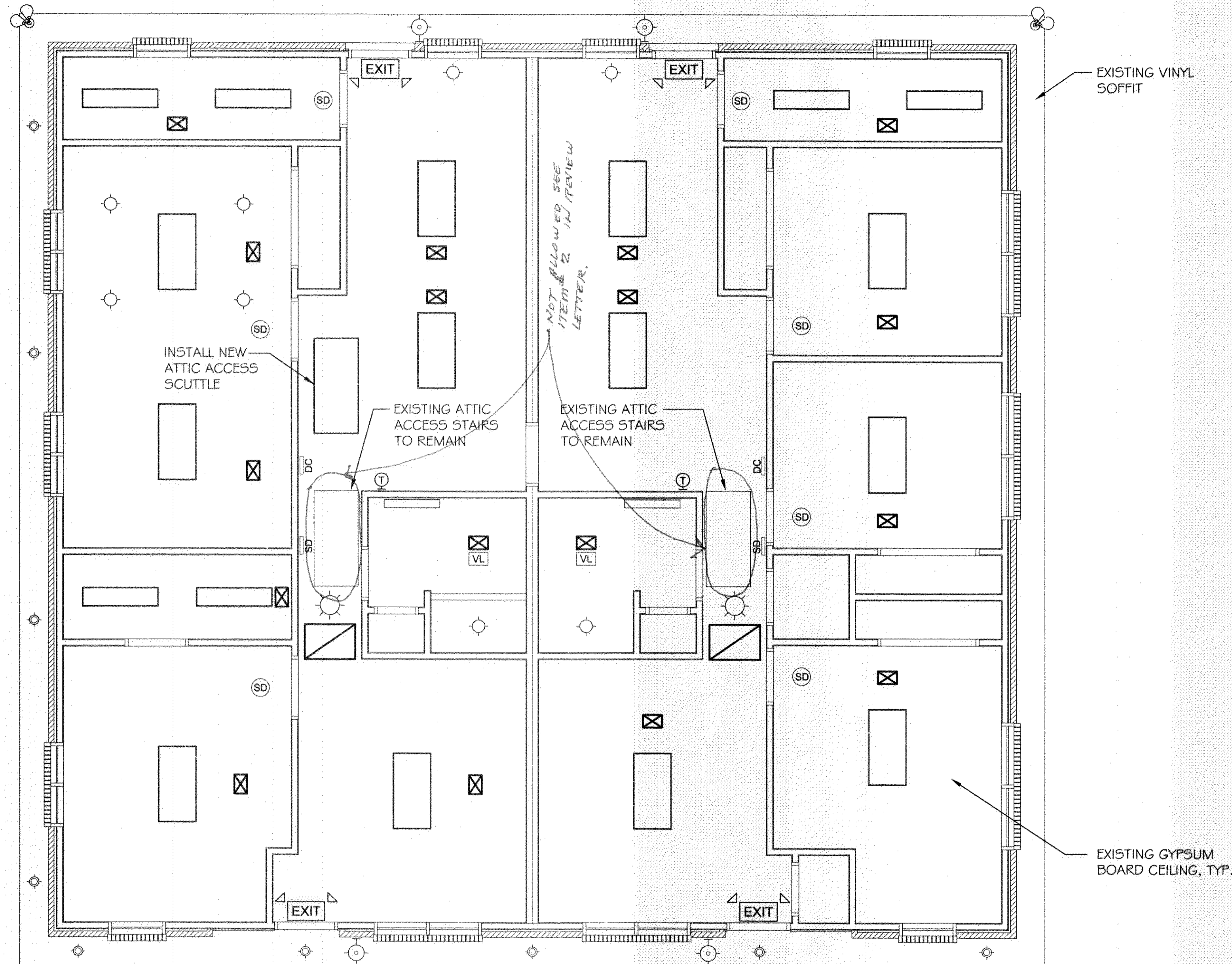
JOB#: 2035

DATE: 07-07-09

SHEET 8

A-4

OF 9

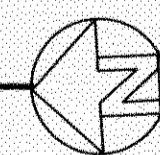


LEGEND

- EXISTING WALL
- 2x4 FLUORESCENT LIGHT FIXTURE (4 BULB)
- 1x4 FLUORESCENT LIGHT FIXTURE (2 BULB)
- EXHAUST FAN VENT/LIGHT
- CEILING MOUNTED GLOBE FIXTURE
- WALL MOUNTED FLUORESCENT (1 BULB)
- RECESSED CAN LIGHT
- WALL MOUNTED EXTERIOR FIXTURE (1 BULB)
- SOFFIT MOUNTED FLOOD LIGHT-EXTERIOR
- SOFFIT MOUNTED CAN LIGHT-RECESSED-EXTERIOR
- SMOKE DETECTOR CEILING MOUNTED
- SMOKE DETECTOR WALL MOUNTED
- DOOR CHIME
- THERMOSTAT
- EXIT LIGHT/EMERGENCY LIGHT COMBO W/90 MIN. BATTERY BACKUP
- EXISTING ATTIC ACCESS STAIRS TO BE REMOVED
- SUPPLY AIR GRILLE
- RETURN AIR GRILLE

EXISTING REFLECTED CEILING PLAN

SCALE: 1/4" = 1'



REVIEWED FOR
STATE FIRE MARSHAL
AS PER REVIEW LETTER
BY: OUIS V. RAMKE
Ouis V. Ramke

367528