

**DAMMON
ENGINEERING, INC.**

CHIEF ENGINEER
EMMETT
DAMMON, P.E.

CHIEF ARCHITECT
ROBERT
WILTSE

1095 FLORIDA AVENUE
SLIDELL, LA. 70458
OFFICE: 985-649-5832
FAX: 985-641-5950

WEBSITE:
WWW.DAMMONENGINEERING.COM

EMAIL:
DAMMONENG@BELLSOUTH.NET

ARCHITECTURE

ENGINEERING

STUDIES

PLANNING

INVESTIGATION

EXPERT WITNESS

OFFICE
RENOVATION
FOR ST. TAMMANY
PARISH SCHOOLS
SLIDELL, LA

EXTERIOR
ELEVATIONS

REV:

SCALE: AS NOTED

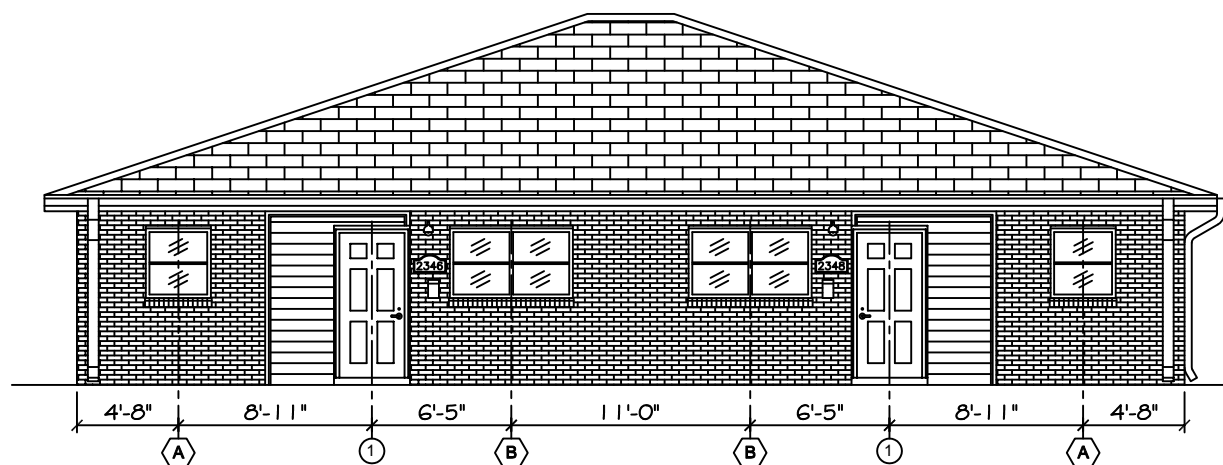
JOB#: 2035

DATE: 07-07-09

SHEET 7

A-3

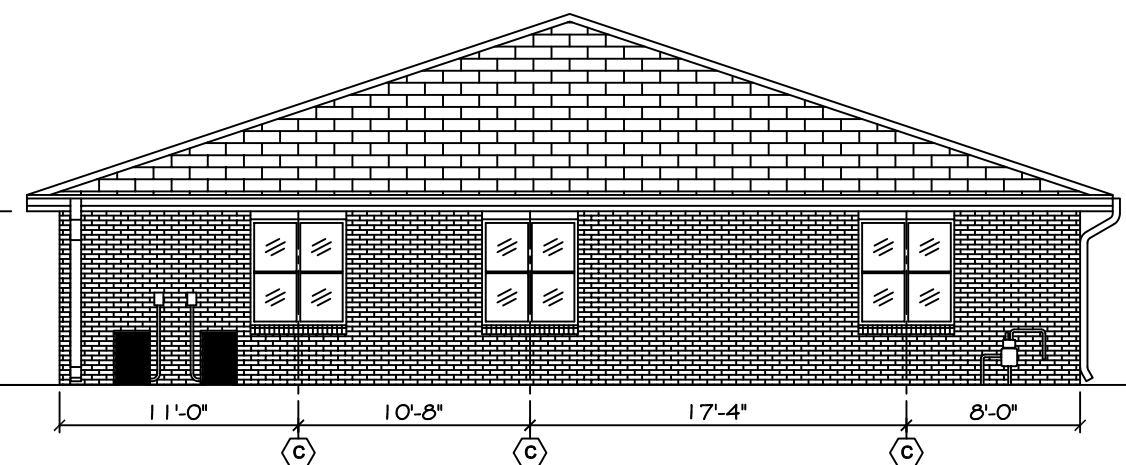
OF 9



WEST (FRONT) ELEVATION

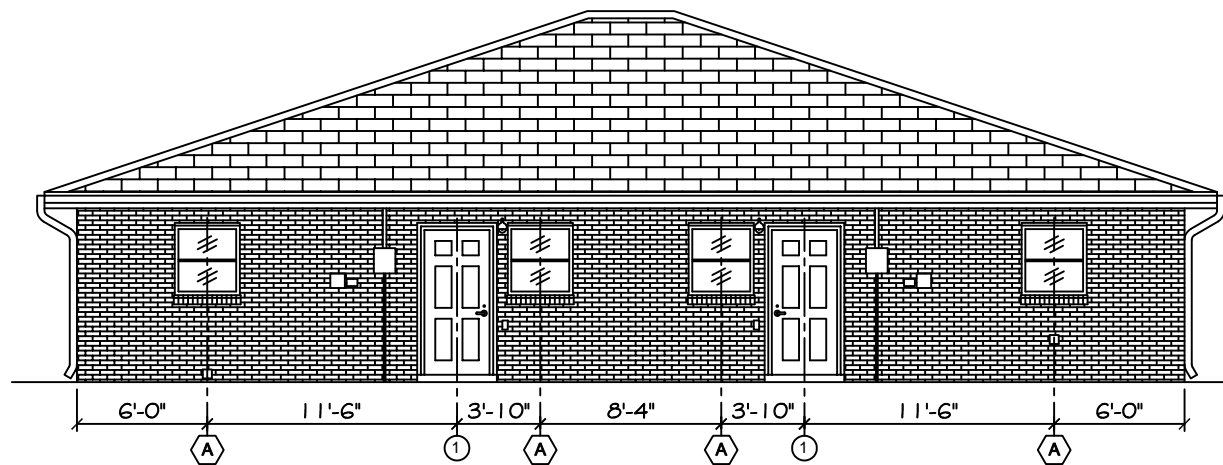
SCALE: 1/4"=1'

EAVE HEIGHT
ELEV. = 8'-0"
8'-0"
FIN. FLOOR
ELEV. = 0'-0"



NORTH (SIDE) ELEVATION

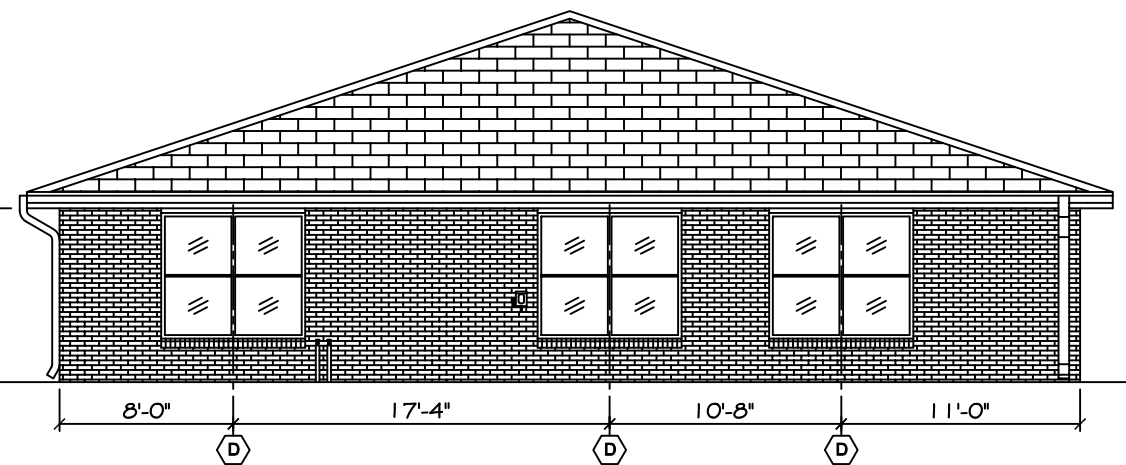
SCALE: 1/4"=1'



EAST (REAR) ELEVATION

SCALE: 1/4"=1'

EAVE HEIGHT
ELEV. = 8'-0"
8'-0"
FIN. FLOOR
ELEV. = 0'-0"



SOUTH (SIDE) ELEVATION

SCALE: 1/4"=1'