

DAMMON
ENGINEERING, INC.

CHIEF ENGINEER
EMMETT
DAMMON, P.E.

CHIEF ARCHITECT
ROBERT
WILTSE

1095 FLORIDA AVENUE
SLIDELL, LA. 70458
OFFICE: 985-649-5832
FAX: 985-641-5950

WEBSITE:
WWW.DAMMONENGINEERING.COM

EMAIL:
DAMMONENG@BELLSOUTH.NET

ARCHITECTURE

ENGINEERING

STUDIES

PLANNING

INVESTIGATION

EXPERT WITNESS

OFFICE
RENOVATION
FOR ST. TAMMANY
PARISH SCHOOLS
SLIDELL, LA

REFLECTED
CEILING PLAN

REV:

SCALE: AS NOTED

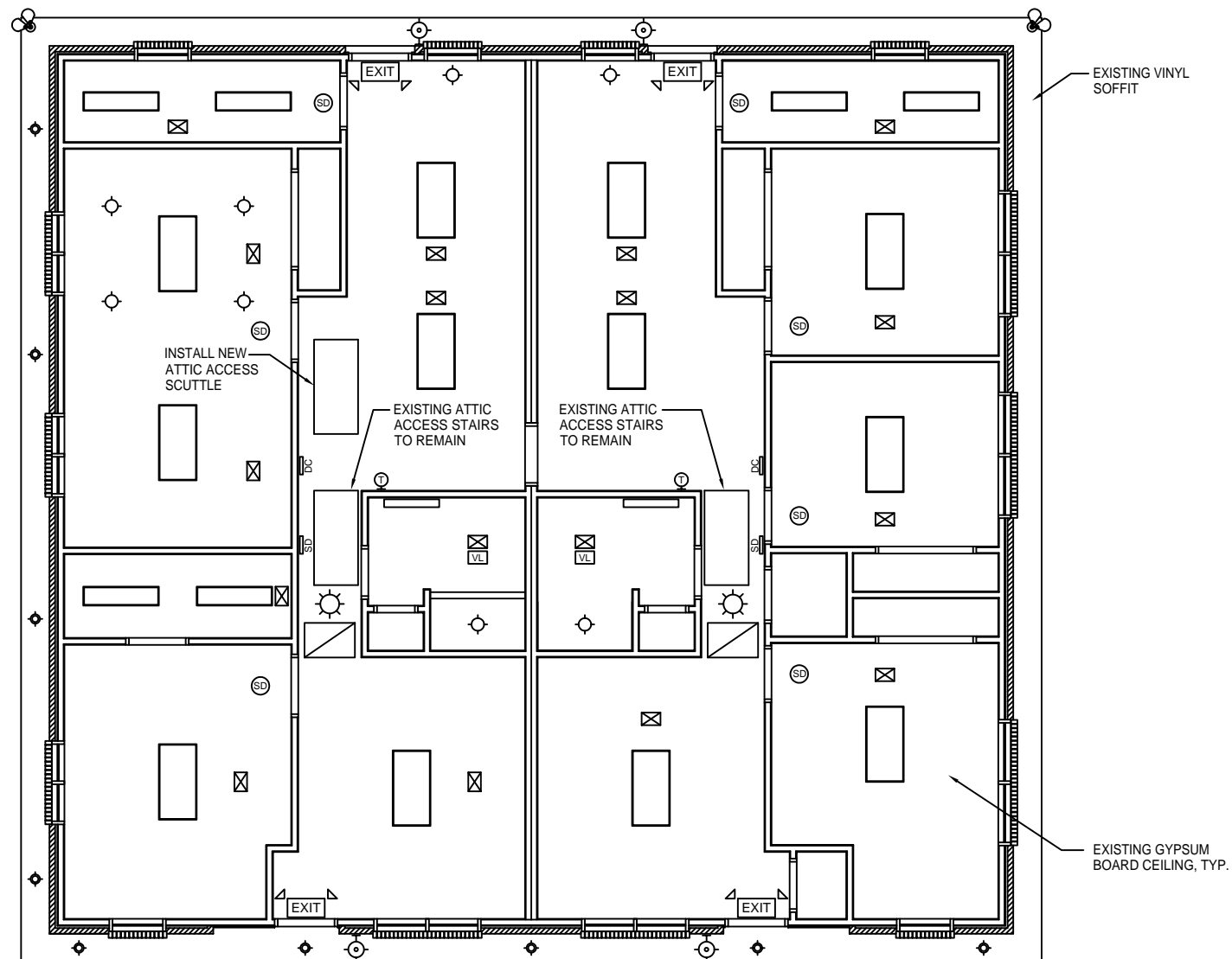
JOB#: 2035

DATE: 07-07-09

SHEET 8

A-4

OF 9



- LEGEND**
- EXISTING WALL
 - 2x4 FLUORESCENT LIGHT FIXTURE (4 BULB)
 - 1x4 FLUORESCENT LIGHT FIXTURE (2 BULB)
 - EXHAUST FAN VENT/LIGHT
 - CEILING MOUNTED GLOBE FIXTURE
 - WALL MOUNTED FLUORESCENT (1 BULB)
 - RECESSED CAN LIGHT
 - WALL MOUNTED EXTERIOR FIXTURE (1 BULB)
 - SOFFIT MOUNTED FLOOD LIGHT-EXTERIOR
 - SOFFIT MOUNTED CAN LIGHT-RECESSED-EXTERIOR
 - SMOKE DETECTOR CEILING MOUNTED
 - SMOKE DETECTOR WALL MOUNTED
 - DOOR CHIME
 - THERMOSTAT
 - EXIT LIGHT/EMERGENCY LIGHT COMBO W/90 MIN. BATTERY BACKUP
 - EXISTING ATTIC ACCESS STAIRS TO BE REMOVED
 - SUPPLY AIR GRILLE
 - RETURN AIR GRILLE

EXISTING REFLECTED CEILING PLAN SCALE: 1/4"=1'