

DAMMON
ENGINEERING, INC.

CHIEF ENGINEER
EMMETT
DAMMON, P.E.

CHIEF ARCHITECT
ROBERT
WILTSE

1095 FLORIDA AVENUE
SLIDELL, LA. 70458
OFFICE: 985-649-5832
FAX: 985-641-5950

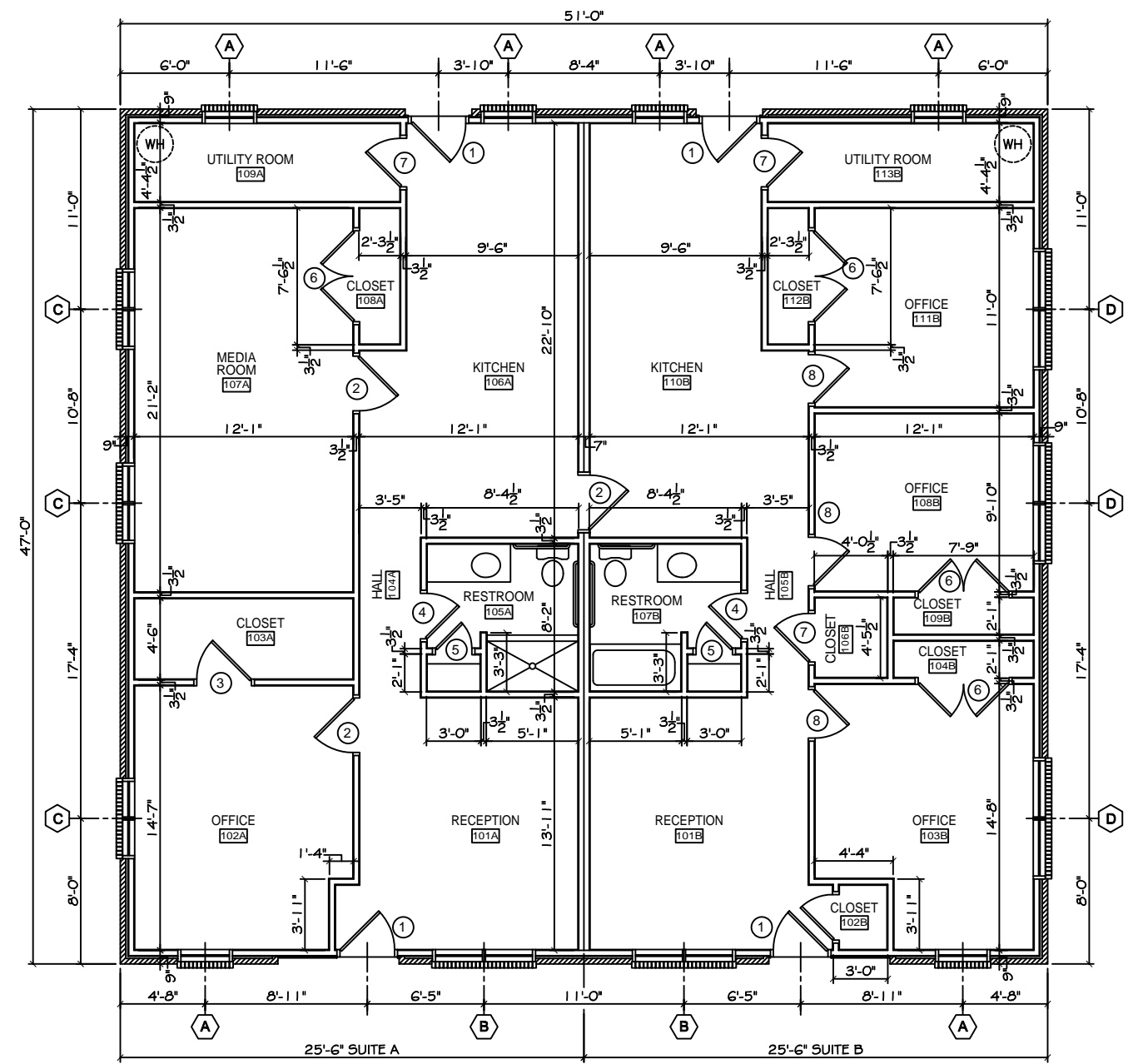
WEBSITE:
WWW.DAMMONENGINEERING.COM

EMAIL:
DAMMONENG@BELLSOUTH.NET

- ARCHITECTURE
- ENGINEERING
- STUDIES
- PLANNING
- INVESTIGATION
- EXPERT WITNESS

OFFICE
RENOVATION
FOR ST. TAMMANY
PARISH SCHOOLS
SLIDELL, LA

EXISTING
FLOOR PLAN



EXISTING FLOOR PLAN
SCALE: 1/4"=1'



NOTE: ALL DIMENSIONS ARE TO
FACE OF STUD/BRICK OR CENTERLINE
OF WINDOW/DOOR, TYPICAL.

REV:

SCALE: AS NOTED

JOB#: 2035

DATE: 07-07-09

SHEET 3

X-1

OF 9