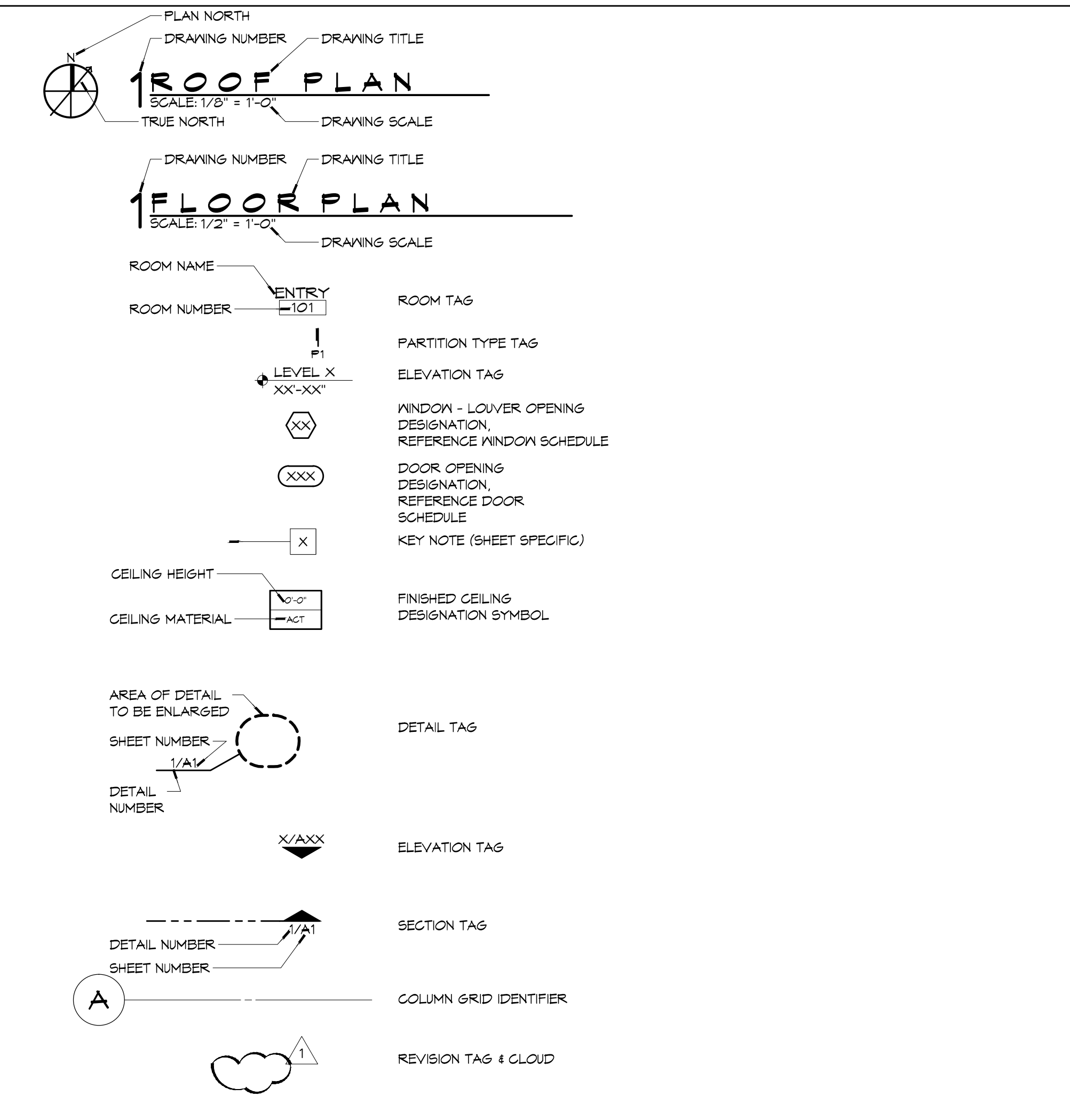


ABBREVIATIONS

SYMBOLS USED AS ABBREVIATIONS:			
∠	ANGLE	FA	FIRE ALARM
CL	CENTERLINE	FAS	FASTEN
CH	CHANNEL	FB	FACE BRICK
D	D PENNY	FBD	FIBERBOARD
⊥	PERPENDICULAR	FBO	FURNISHED BY OTHERS
FL	FLOOR OR PROPERTY LINE	FDR	FLOOR DRAIN
∅	DIAMETER	FE	FIRE EXTINGUISHER
		FEQ	FIRE EXTINGUISHER CAB
A	FRESH AIR	FF	FACTOR FINISH
ABV	ABOVE	FFL	FINISH FLOOR LINE
AC	AIR CONDITIONER	FHG	FIRE HOSE CABINET
ACT	ACOUSTICAL CEILING TILE	FIN	FINISH(ED)
ADD	ADDENDUM	FJT	FLUSH JOINT
ADH	ADHESIVE	FLG	FLASHING
ADJ	ADJUSTIBLE	FLR	FLOOR
AFF	ABOVE FINISH FLOOR	FLUOR	FLUORESCENT
AGG	AGGREGATE	FLX	FLEXIBLE
ALT	ALTERNATE	FND	FOUNDATION
ALUM	ALUMINUM	FOC	FACE OF CONCRETE
ANG	ANCHOR	FOF	FACE OF FINISH
ANGD	ANGDIZED	FOM	FACE OF MASONRY
ARCH	ARCHITECTURAL	FOS	FACE OF STUD(S)
ASPH	ASPHALT	FFL	FLOOR PLATE
AUTO	AUTOMATIC	FR	FRAMED/FRAMING
		FRG	FIRE-RESISTANT COATING
BC	BRICK COURSE	FRG	FORGED
BD	BOARD	FRT	FIRE-RETARDANT
BEL	BELOW	FTG	FOOTING
BG	BUMPER GUARD	FJR	FURRING
BJT	BEAD JOINT		
BIT	BUTINOUS	GA	GAUGE
BLDG	BUILDING	GALV	GALVANIZED
BLK	BLOCK	GC	GENERAL CONTRACTOR
BLKNG	BLOCKING	GD	GRADE
BM	BENCH MARK	GF	GROUND FACE
BO	BY OTHERS	GI	GALVANIZED IRON
BOT	BOTTOM	GKT	GASKET
BRG	BEARING	GL	GLASS/GLAZING
BRDG	BRIDGE/BRIDGING	GVL	GRAVEL
BS	BOTH SIDES	GWB	GYPSUM WALL BOARD
BW	BOTH WAYS		
CAB	CABINET	HB	HOSE BIB
CCTV	CLOSED CIRCUIT TV	HBD	HARDBOARD
CEM	CEMENT/CEMENTITIOUS	H/C	HANDICAPPED
CER	CERAMIC	HC	HOLLOW CORE
CFLG	COUNTERFLASHING	HGJ	HORIZONTAL CONTROL JT
CG	CORNER GUARD	HDR	HEADER
CHBD	CHALKBOARD	HWR	HARDWARE
CJT	CONTROL JOINT	HJT	HEAD JOINT
CK	CAULK	HM	HOLLOW METAL
CLNG	CEILING	HOR	HORIZONTAL
CLR	CLEAR	HPT	HIGH POINT
CLL	CONTRACT LIMIT LINE	HR	HANDRAIL
CMU	CONCRETE MASONRY UNIT	HT	HEIGHT
CNTR	COUNTER	HG	HEATING
COL	COLUMN	HVAC	HEATING/VENTILATION/AIR CONDITIONING
COMB	COMBINATION	HWD	HARDWOOD
COMP	COMPOSITION		
CONC	CONCRETE	ID	INSIDE DIAMETER
CONST	CONSTRUCTION	INCL	INCLUDE(D)/(ING)
CONT	CONTINUOUS	INSF	INSULATING FILL
CORR	CORRUGATED	INSUL	INSULATE(D)/INSULATION
CPT	CARPET(ED)	INT	INTERIOR
CRG	COLD ROLLED CHANNEL	INTM	INTERMEDIATE
CRS	COURSE(S)	INV	INVERT
CS	COUNTERSINK	IPS	IRON PIPE SIZE
CS/WK	CASEWORK		
CT	CERAMIC TILE	J	JOIST
CTR	CENTER	JF	JOINT FILLER
CTRK	CURTAIN TRACK	JT	JOINT
CTSC	COUNTERSINK SCREW		
QUB C	QUICKLE CURTAIN	KIT	KITCHEN
		KO	KNOCKOUT
		KPL	KICKPLATE
D	DRAIN		
DBL	DOUBLE	L	LENGTH
DFL	DEFLECTION	LAB	LABORATORY
DEMO	DEMOLITION/DEMOLISH	LAD	LADDER
DEP	DEPRESSED	LAM	LAMINATE(D)
DIA	DIAMETER	LAV	LAVATORY
DIAG	DIAGONAL	LB	LAS BOLT
DIM	DIMENSION	LBL	LABEL
DISP	DISPENSER	LC	LIGHT CONTROL
DIV	DIVISION	LH	LEFT HAND
DPR	DAMPER	LL	LIVE LOAD
DS	DOWNSPOUT	LGMF	LIGHT GAUGE METAL FRAMING
DTA	DOVETAIL ANCHOR		
DTL	DETAIL	LP	LIGHTPROOF
DN	DISHWASHER	LPT	LOW POINT
DWR	DRAINER	LST	LIMESTONE
DWG	DRAWING	LT	LIGHT
		LTL	LINTEL
E	EAST	LVR	LOUVER
EA	EACH	LN	LIGHTWEIGHT
EB	EXPANSION JOINT	LXC	LIGHTWEIGHT CONCRETE
EJ	EXPANSION JOINT		
EL	ELEVATION	MAS	MASONRY
ELEC	ELECTRIC/ELECTRICAL	MATL	MATERIAL(S)
ELEV	ELEVATOR	MAX	MAXIMUM
EMER	EMERGENCY	MBR	MEMBER
ENG	ENCLOSURE	MDF	MEDIUM DENSITY FIBERBOARD
EO	ELECTRIC OUTLET		
EP	ELECTRIC PANELBOARD	MDO	MEDIUM DENSITY OVERLAY
EQ	EQUAL	MECH	MECHANICAL
EQFM	EQUIPMENT	MED	MEDIUM
ETR	EXISTING TO REMAIN	MTL	METAL
EW	ELECTRIC WATER COOLER	MFR	MANUFACTURE(R)
EXH	ELECTRIC WATER HEATER	MH	MANHOLE
EXH	EXHAUST	M/W	MICROWAVE
EXMP	EXPANDED METAL PLATE	MIN	MINIMUM
EXP	EXPOSED	MIR	MIRROR
EXIST	EXISTING	MISC	MISCELLANEOUS
EXT	EXTERIOR	MBR	MEMBRANE
		MO	MASONRY OPENING
		MOV	MOVEABLE
		MT	MOUNTED/(ING)
		MULL	MULLION
		MWK	MILLYORK

GENERAL NOTES



PROJECT STATISTICS

SQUARE FOOTAGE	
ROOF REPLACEMENT (SF)	21,000±
ROOF REPAIR/COATING (SF)	800±
TOTAL ROOF REPAIRS/REPLACEMENT (SF)	21,800±

PROJECT LOCATION:
SLIDELL JUNIOR HIGH SCHOOL
333 PENNSYLVANIA AVENUE
SLIDELL, LA 70450

OWNER:
ST. TAMMANY PARISH SCHOOL BOARD
321 N. THEARD
COVINGTON, LA 70438

GENERAL NOTES

- ALL MATERIALS AND WORK, INCIDENTAL TO THE CONSTRUCTION OF THIS PROJECT, SHALL CONFORM TO ALL GOVERNING CODES, AND REGULATIONS OF AGENCIES IN AUTHORITY.
- CONTRACTOR SHALL PROVIDE ALL PUBLIC PROTECTIONS NECESSARY AS REQUIRED BY LAW.
- THE DRAWINGS, SPECIFICATIONS AND ANY SUBSEQUENTLY ISSUED ADDENDA, AMENDMENTS OR SUCH CHANGE ORDERS APPROVED BY THE OWNER AND THE CONTRACTOR ARE PART OF THESE CONTRACT DOCUMENTS.
- DO NOT SCALE DRAWINGS. CONSULT WITH THE ARCHITECT REGARDING ANY ITEMS IN THE CONTRACT DOCUMENTS THAT REQUIRE CLARIFICATION.
- VERIFY LOCATION OF ALL EQUIPMENT WITH THE ARCHITECT, PRIOR TO INSTALLATION.
- TRASH SHALL BE REMOVED FROM THE SITE NOT LESS THAN TWICE MONTHLY.
- THE GENERAL CONTRACTOR SHALL VERIFY EXISTING CONDITIONS PRIOR TO COMMENCING WORK AND REPORT ANY AND ALL DISCREPANCIES TO THE ARCHITECT.
- CONTRACTOR VEHICLES AND EQUIPMENT NECESSARY FOR CONSTRUCTION MAY BE PARKED ON THE SITE. OTHER VEHICLES PARKED ON THE SITE REQUIRE THE OWNER'S PERMISSION.
- WORK INDICATED AS NOT IN CONTRACT, 'N/C', OR 'BY OTHERS', SHALL BE PERFORMED BY OWNER'S SEPARATE CONTRACTORS. THE GENERAL CONTRACTOR SHALL COOPERATE TO THE FULLEST EXTENT WITH ALL OTHER CONTRACTORS AND ASSIST IN COORDINATING THE WORK BY SEPARATE CONTRACTORS WITH THE WORK OF THIS CONTRACT.
- NAMING A CERTAIN BRAND, MAKE OR MANUFACTURER IS TO DESIGNATE THE GENERAL STYLE, TYPE, CHARACTER AND QUALITY STANDARD OF THE PRODUCT DESIRED. SUBSTITUTION REQUESTS MUST BE SUBMITTED PRIOR TO BIDDING.
- ALL MATERIALS/EQUIPMENT SHALL BE INSTALLED PER MANUFACTURER'S RECOMMENDATIONS. WORK NOT CONSISTENT WITH MANUFACTURER'S RECOMMENDATIONS WILL BE REJECTED BY OWNER/ARCHITECT.

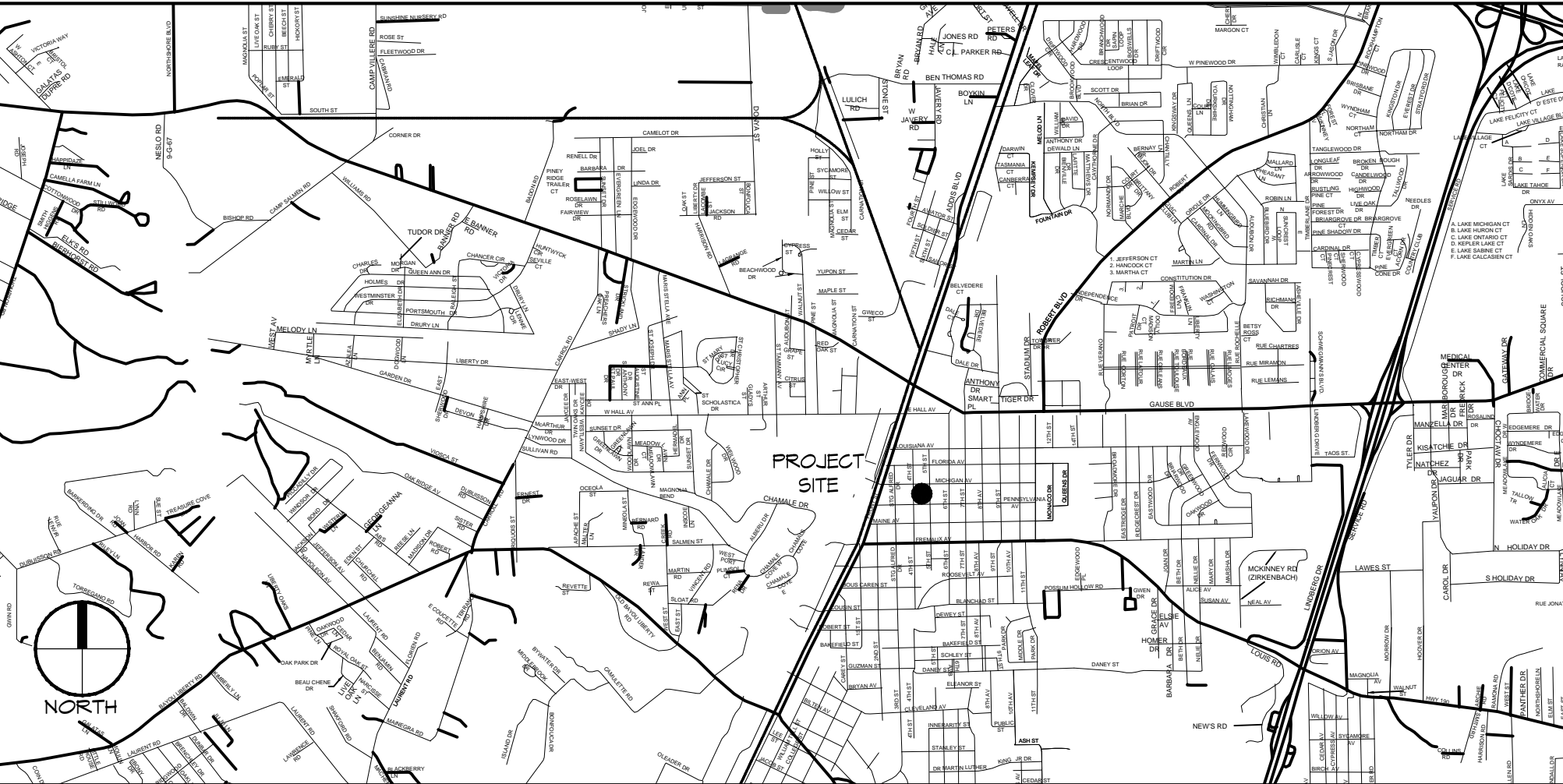
SHEET INDEX

SHEET #	SHEET TITLE
COVER	COVER SHEET
G1	GENERAL INFORMATION SHEET
D1	ROOF DEMOLITION PLAN
A1	ROOF PLAN
A2	ROOF DETAILS

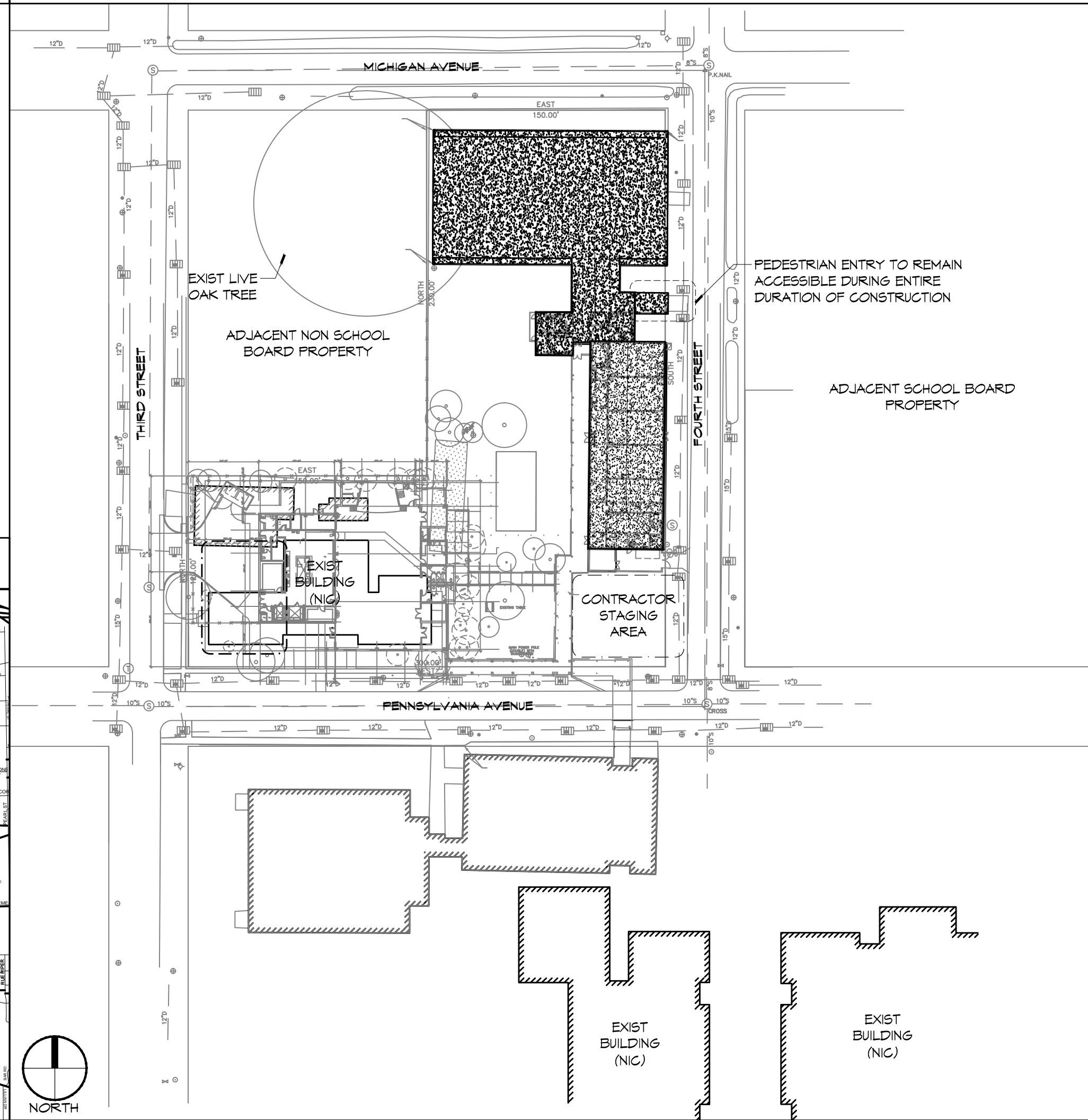
MATERIAL DESIGNATIONS

	CONCRETE		MIRROR IN ELEVATION
	BRICK MASONRY		METAL
	WOOD		RIGID INSULATION
	FIRE TREATED WOOD (ROUGH), CONTINUOUS		BATT INSULATION
	FIRE TREATED WOOD SHIM		TERRAZZO
	PLYWOOD		COMPACT FILL
	GYPSUM BOARD, PLASTER, GROUT		MARBLE
			CONCRETE MASONRY UNITS

VICINITY MAP



SITE PLAN



DAMMON
ENGINEERING, INC.
Architects & Engineers

www.dammoneng.com
dammon@dammoneng.com
PH: 985.649.5832
554 Old Spanish Trail
Slidell, LA 70458
F: 985.641.5950

#	DESCRIPTION	DATE

SEAL:

REEROOFING - OLD 6TH GRADE WING:
SLIDELL JUNIOR HIGH SCHOOL

ST. TAMMANY PARISH SCHOOLS

933 PENNSYLVANIA AVENUE ST. TAMMANY SCHOOL BOARD
SLIDELL, LA 70458 PROJECT # 1921

JOB NO: 2-21-2014
DATE: 2-21-2014
DRAWN BY: KJK
CHECKED BY: KJK

SHEET TITLE:
GENERAL INFORMATION SHEET

DRAWING NUMBER:
G1

SHEET No: 2 of 5