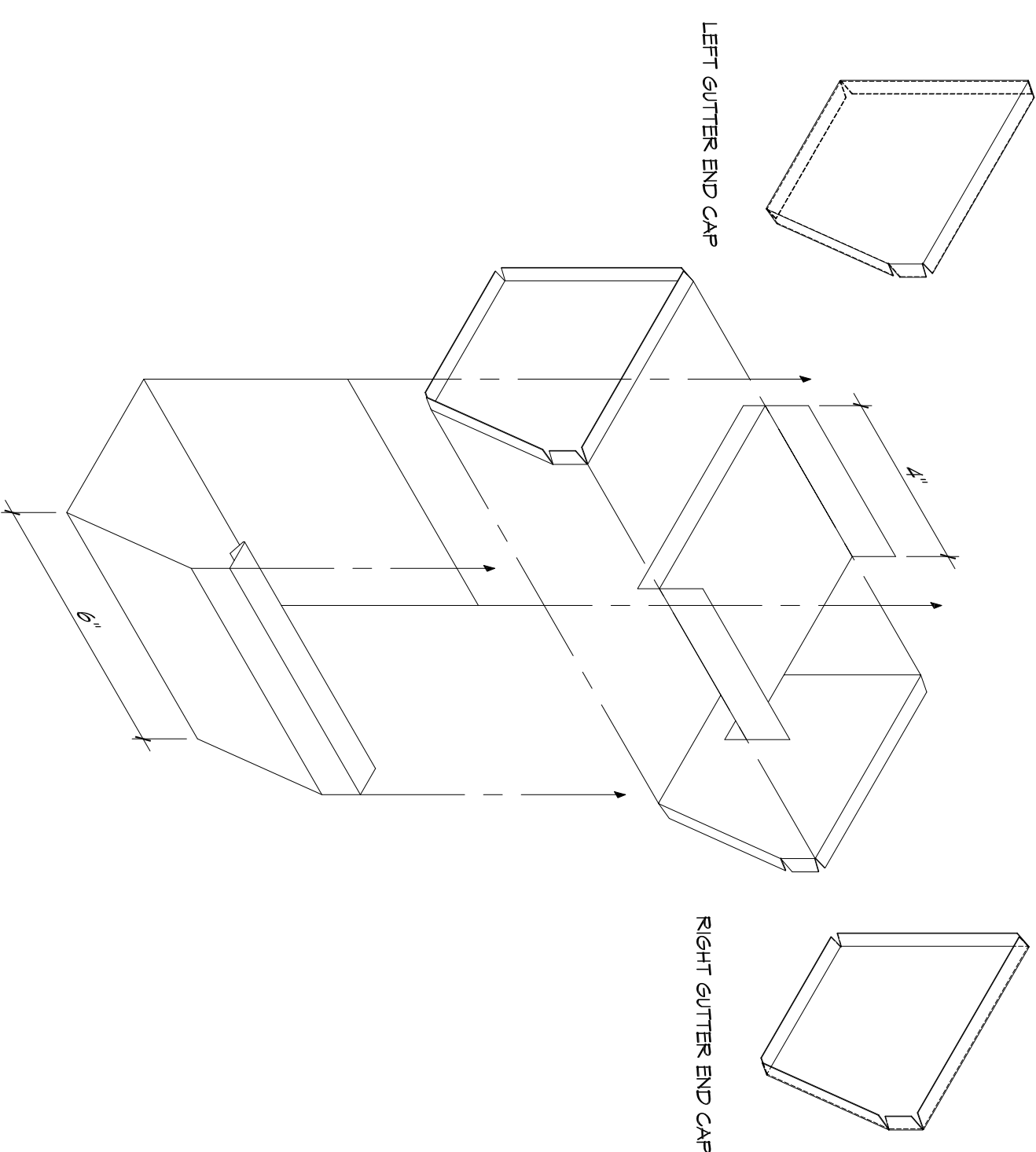


GENERAL NOTES

1. ITEMS INDICATED IN GRAY ROOF ARE EXIST ELEMENTS TO REMAIN. ACTUAL MATERIALS AND MANUFACTURER'S RECOMMENDATION.
2. SPLASH - 585 MODIFIED BITUMEN MEMBRANE SYSTEM IS USED AS A BASIS OF DESIGN FOR THESE DETAILS AND SPECIFIC MATERIALS NAMED REFER TO THIS SYSTEM. ACTUAL MATERIALS MAY VARY SHOULD A DIFFERENT APPROVED ROOF MEMBRANE SYSTEM BE USED.

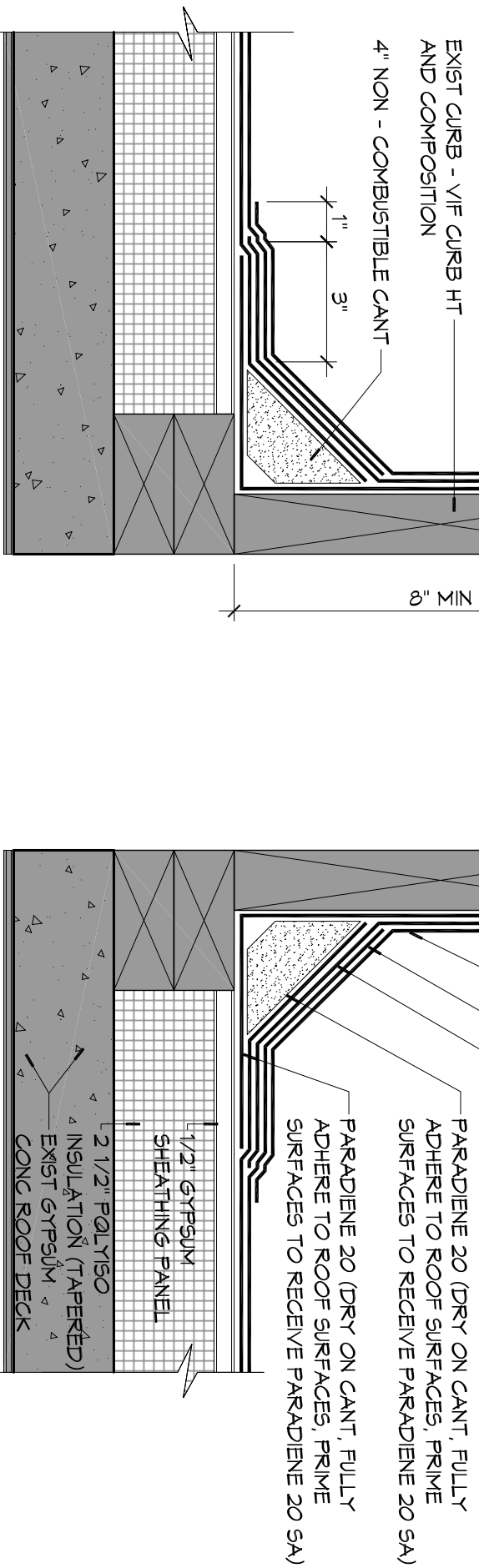


8 DETAIL

SCALE: 3" = 1'-0"

GUTTER EXPANSION JOINT ASSEMBLY

NOTE:
CONTRACTOR TO FIELD VERIFY CONDITION OF EXIST CURB AND GUTTER FLASHING PRIOR TO ASSEMBLY. CONTRACTOR SHOULD VERIFY EXIST MATERIALS POSSESS COMPATIBILITY WITH EITHER THEIR CONDITION OR COMPATIBILITY.

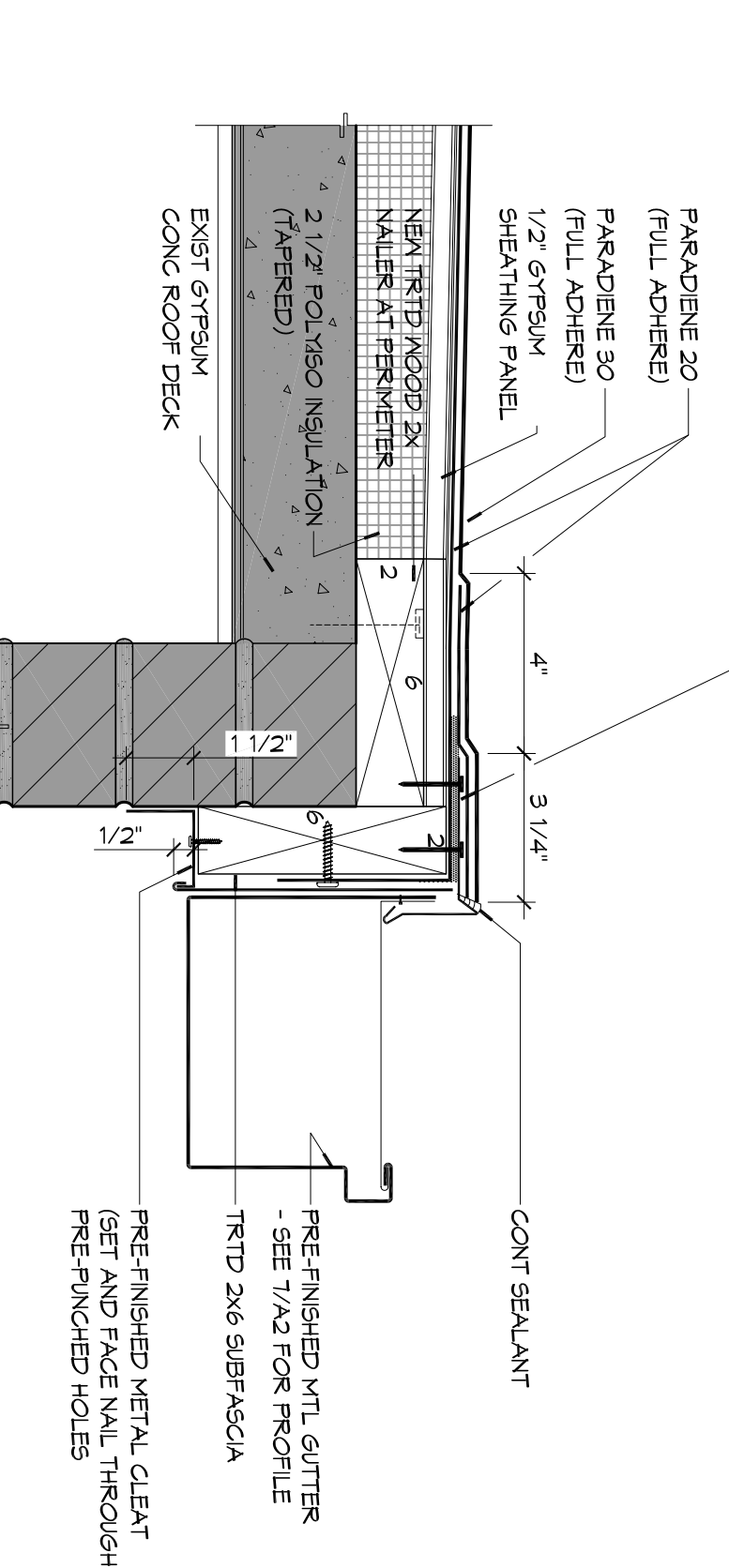


6 DETAIL

SCALE: 3" = 1'-0"

CURS

NOTE:
CONTRACTOR TO FIELD VERIFY CONDITION OF EXIST CURB AND GUTTER FLASHING PRIOR TO ASSEMBLY. CONTRACTOR SHOULD VERIFY EXIST MATERIALS POSSESS COMPATIBILITY WITH EITHER THEIR CONDITION OR COMPATIBILITY.



2 DETAIL

SCALE: 3" = 1'-0"

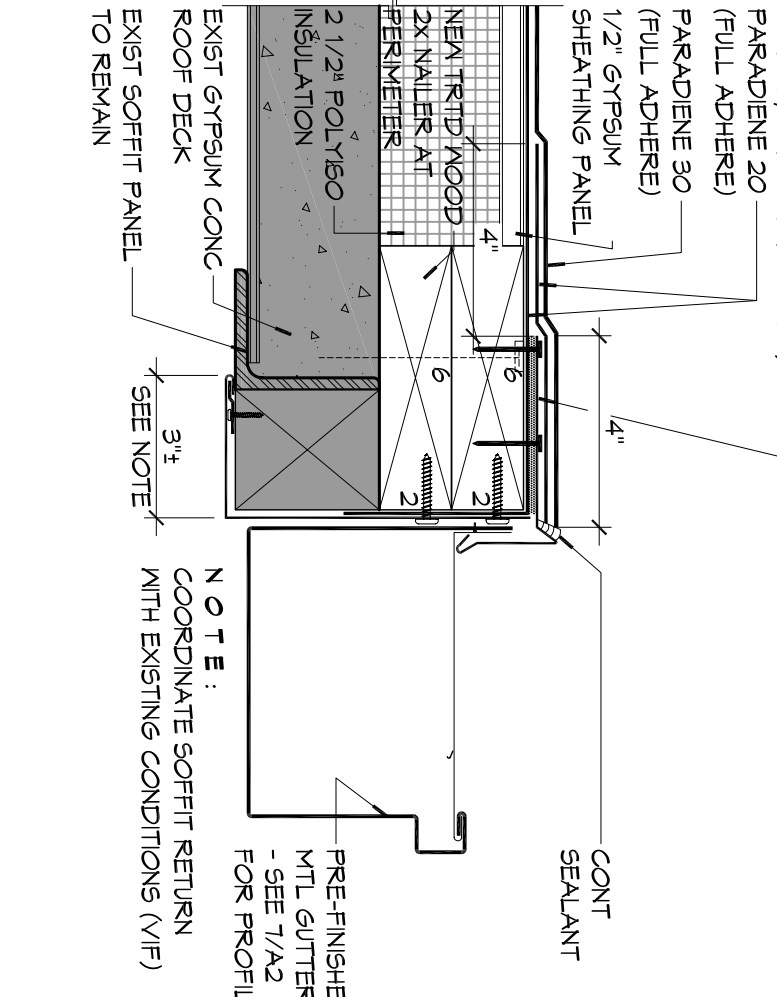
ROOF EDGE WITH GUTTER

5 DETAIL

SCALE: 3" = 1'-0"

ROOF EDGE

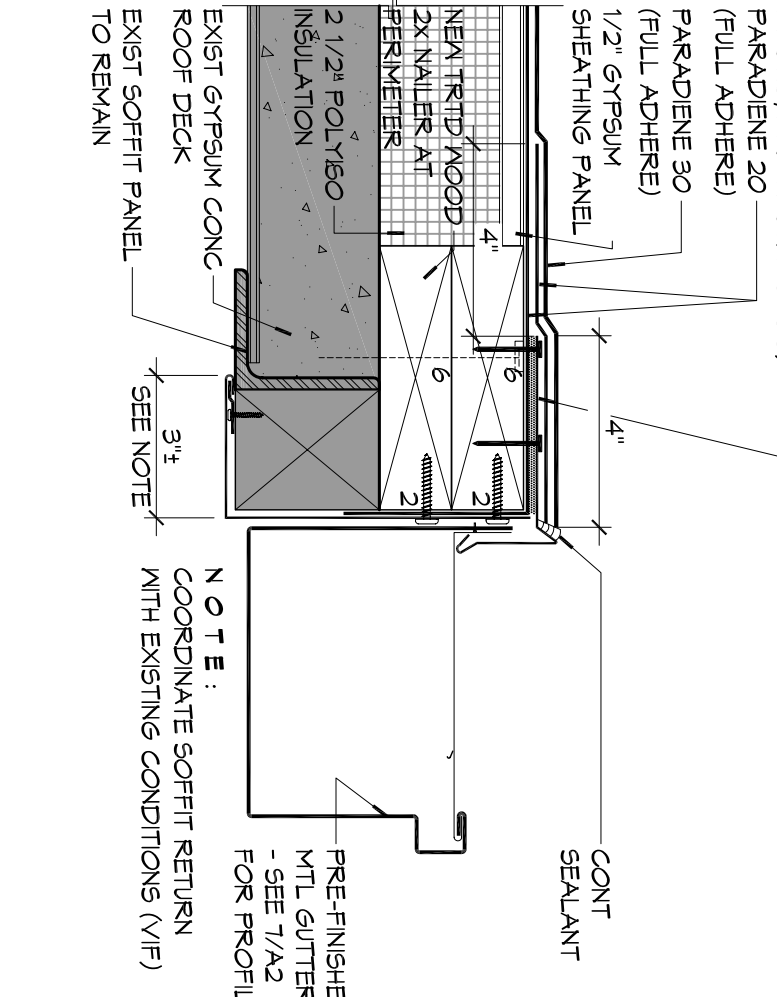
NOTE:
CONTRACTOR TO FIELD VERIFY CONDITION OF EXIST CURB AND GUTTER FLASHING PRIOR TO ASSEMBLY. CONTRACTOR SHOULD VERIFY EXIST MATERIALS POSSESS COMPATIBILITY WITH EITHER THEIR CONDITION OR COMPATIBILITY.



1 DETAIL

SCALE: 3" = 1'-0"

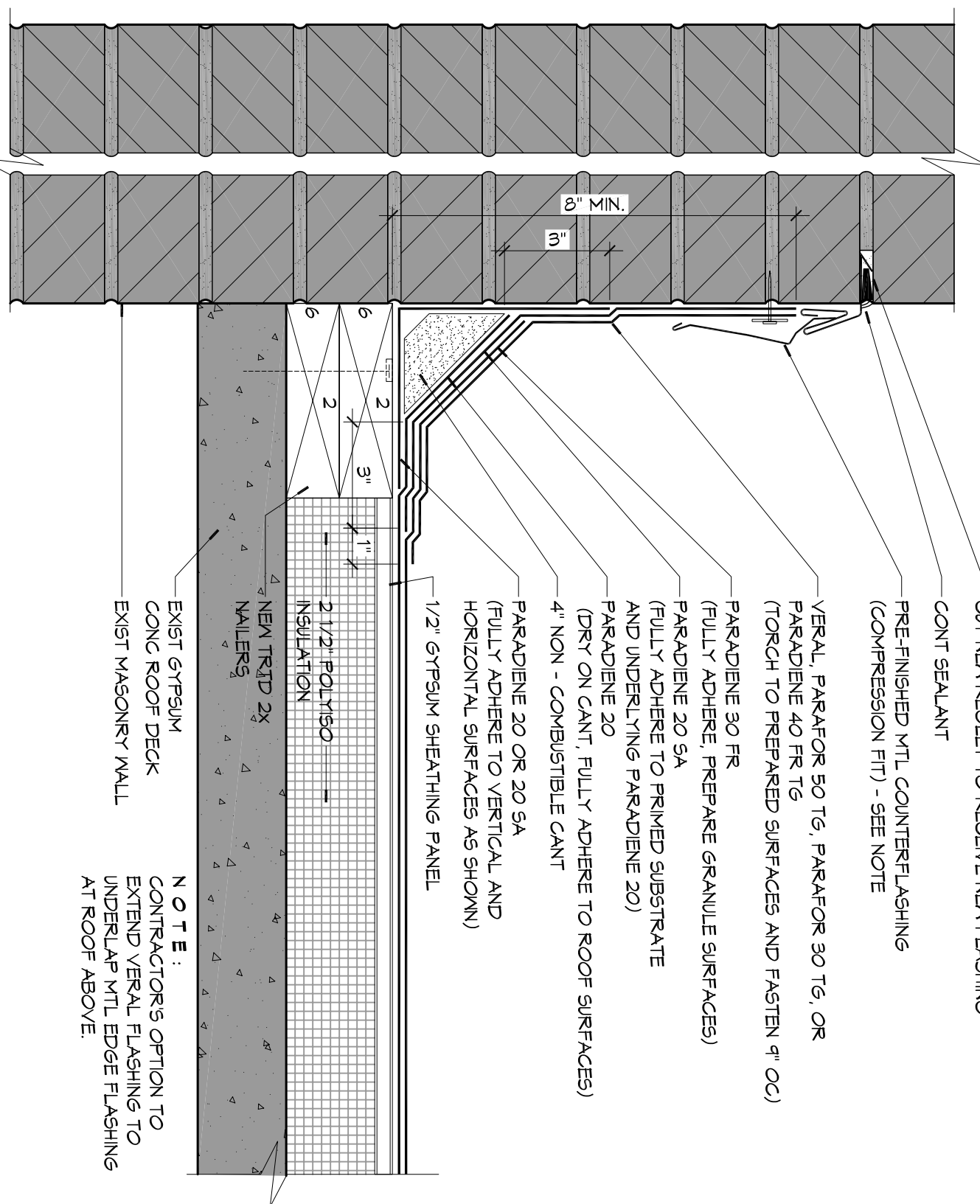
ROOF EDGE AT GUTTER



4 DETAIL

SCALE: 3" = 1'-0"

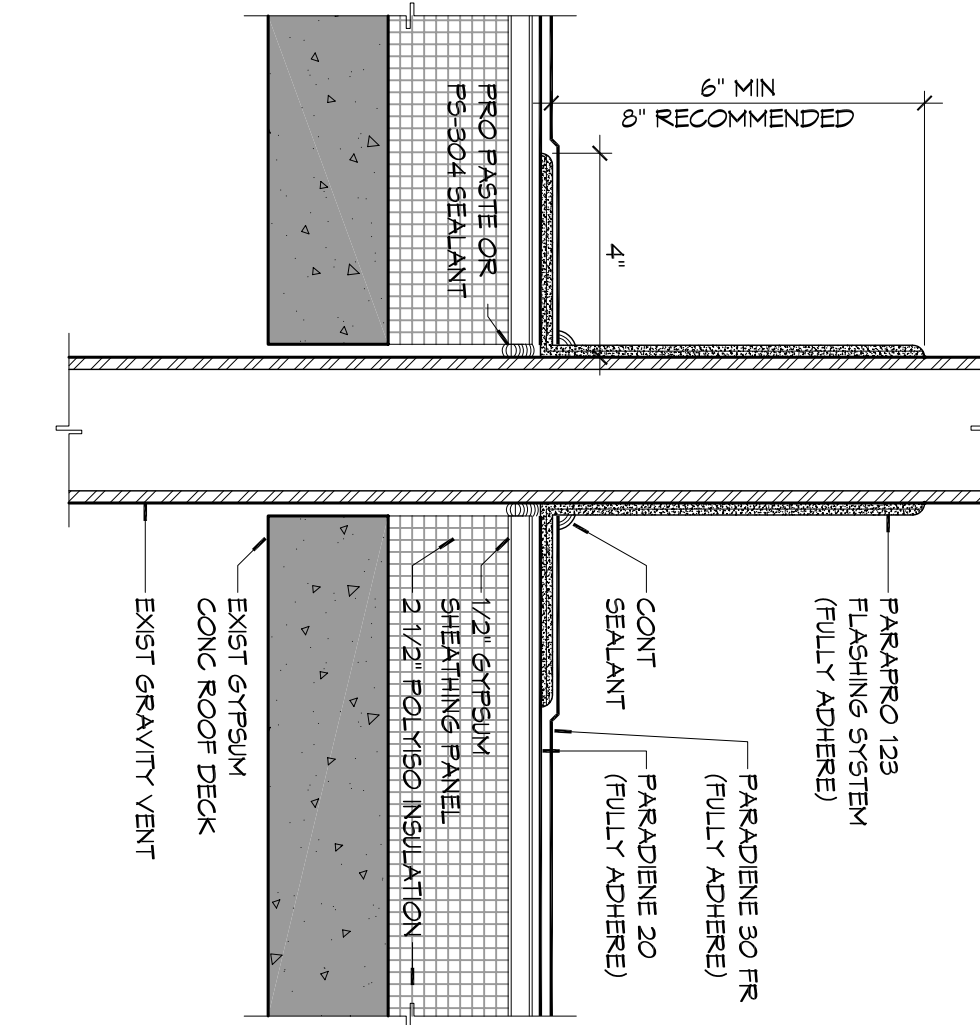
ROOF/WALL



3 DETAIL

SCALE: 3" = 1'-0"

GRAVITY VENT



REEROOFING OF OLD 6TH GRADE WING:

ST. TAMMANY SCHOOL BOARD
PROJECT 132
393 PENNSYLVANIA AVENUE
SLIDELL, LA 70458
JOB NO: 2141 DATE: MARCH 9, 2014
DRAWN BY: KJK CHECKED BY: KJK



REVISIONS	DATE

DAMMON ENGINEERING, INC.
Architects & Engineers
www.dammonengineering.com
dammon@bellsouth.net
Chief Architect: Kevin J. Kinchen, NCARB
554 Old Spanish Trail
Slidell, LA 70458
PH: 985.644.5832
F: 985.641.5950

SHEET TITLE:
ROOF DETAILS

DRAWING NUMBER:
A2

SHEET NO.: 5 OF 5