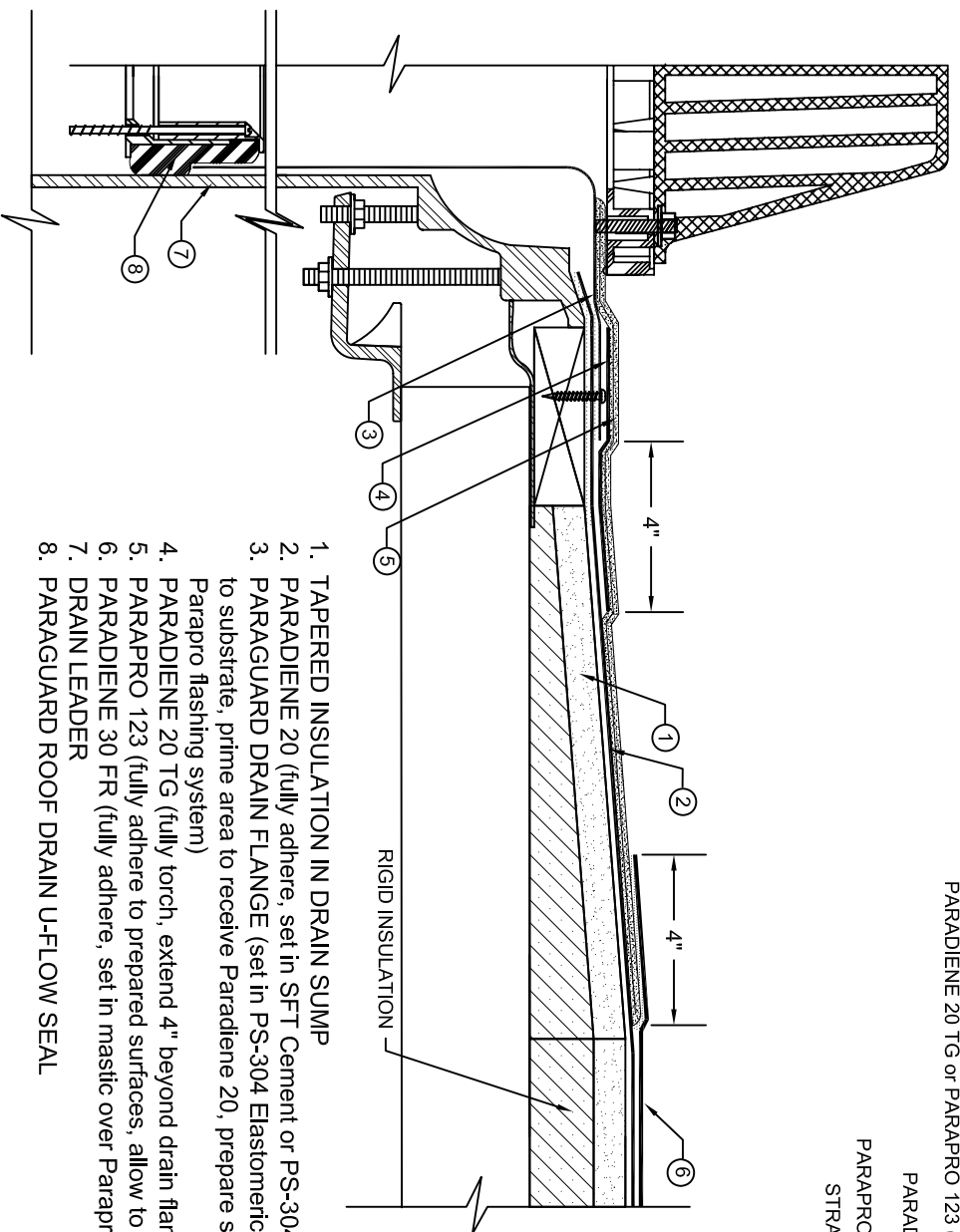
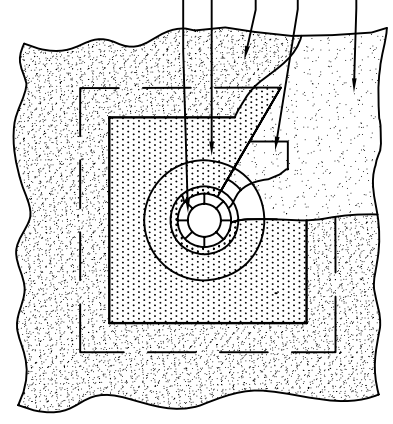


PARAGUARD ROOF DRAIN PARADIENE 20/30 FR - RIGID INSULATION



1. TAPERED INSULATION IN DRAIN SUMP
2. PARADIENE 20 (fully adhere, set in SFT Cement or PS-304 6" around drain opening)
3. PARAGUARD DRAIN FLANGE (set in PS-304 Elastomeric Sealant, fasten flange to substrate, prime area to receive Paradiene 20, prepare surface to receive Parapro flashing system)
4. PARADIENE 20 TG (fully torch, extend 4" beyond drain flange)
5. PARAPRO 123 (fully adhere to prepared surfaces, allow to cure prior to application of target sheet)
6. PARADIENE 30 FR (fully adhere, set in mastic over Parapro in sump)
7. DRAIN LEADER
8. PARAGUARD ROOF DRAIN U-FLOW SEAL

PARADIENE 20 (fully adhere - extend fully beneath flange. See note # 4)
 PARADIENE 123 (fully adhere. See note # 4)
 PARADIENE 30 FR (fully adhere)
 PARAPRO 123 FLASHING SYSTEM
 STRAINER & CLAMPING RING



NOTES: 1. WHERE PRIMER IS INDICATED TO MAINTAIN PROPER ADHESION, TA-119 PRIMER IS REQUIRED FOR ALL PARADIENE 20 SA FLASHING REINFORCING AND STRIPPING PLY APPLICATIONS. USE PA-1125 OR PA-917LS FOR ALL NON-PARADIENE 20 SA APPLICATIONS. CONTACT SIPLAST FOR SPECIFIC REQUIREMENTS.
 2. FOLLOW SIPLAST SPECIFICATIONS FOR INSTALLATION OF ROOF DRAIN COMPONENTS.
 3. REQUIREMENTS AND RECOMMENDATIONS DETAILED IN SIPLAST SPECIFICATIONS AND THE PARAPRO 123 FLASHING SYSTEM INSTALLERS GUIDE SHALL APPLY IN ADDITION TO THE ABOVE DRAWING.
 4. PARAPRO CANNOT BE APPLIED IN THE ABOVE CONFIGURATION OVER MEMBRANES OR OTHER MATERIALS CONTAINING UNCURED, SOLVENT-BASED MATERIALS. IN SUCH CASES, MEMBRANES TO BE COVERED WITH PARAPRO MUST BE ADHERED WITH SFT ADHESIVE OR PS-304 ELASTOMERIC SEALANT. CONTACT SIPLAST FOR TREATMENT OPTIONS OF CONDITIONS UTILIZING A BASE PLY APPLIED IN SOLVENT BASED ADHESIVE.
 5. REFER TO SIPLAST FLEECE CUTTING RECOMMENDATIONS FOR CONFIGURATIONS, CUTTING, FOLDING, AND LAPPING TECHNIQUES.

CAUTION: SIPLAST RECOMMENDS THAT ALL PRACTICES PERTAINING TO NRCA CERTA GUIDELINES BE FOLLOWED WHEN TORCHING METHODS ARE EMPLOYED. THIS INCLUDES PERFORMING A FIRE WATCH FOLLOWING ANY TORCH APPLICATIONS. ALWAYS HAVE APPROVED FIRE-EXTINGUISHING EQUIPMENT NEARBY.

N.T.S.