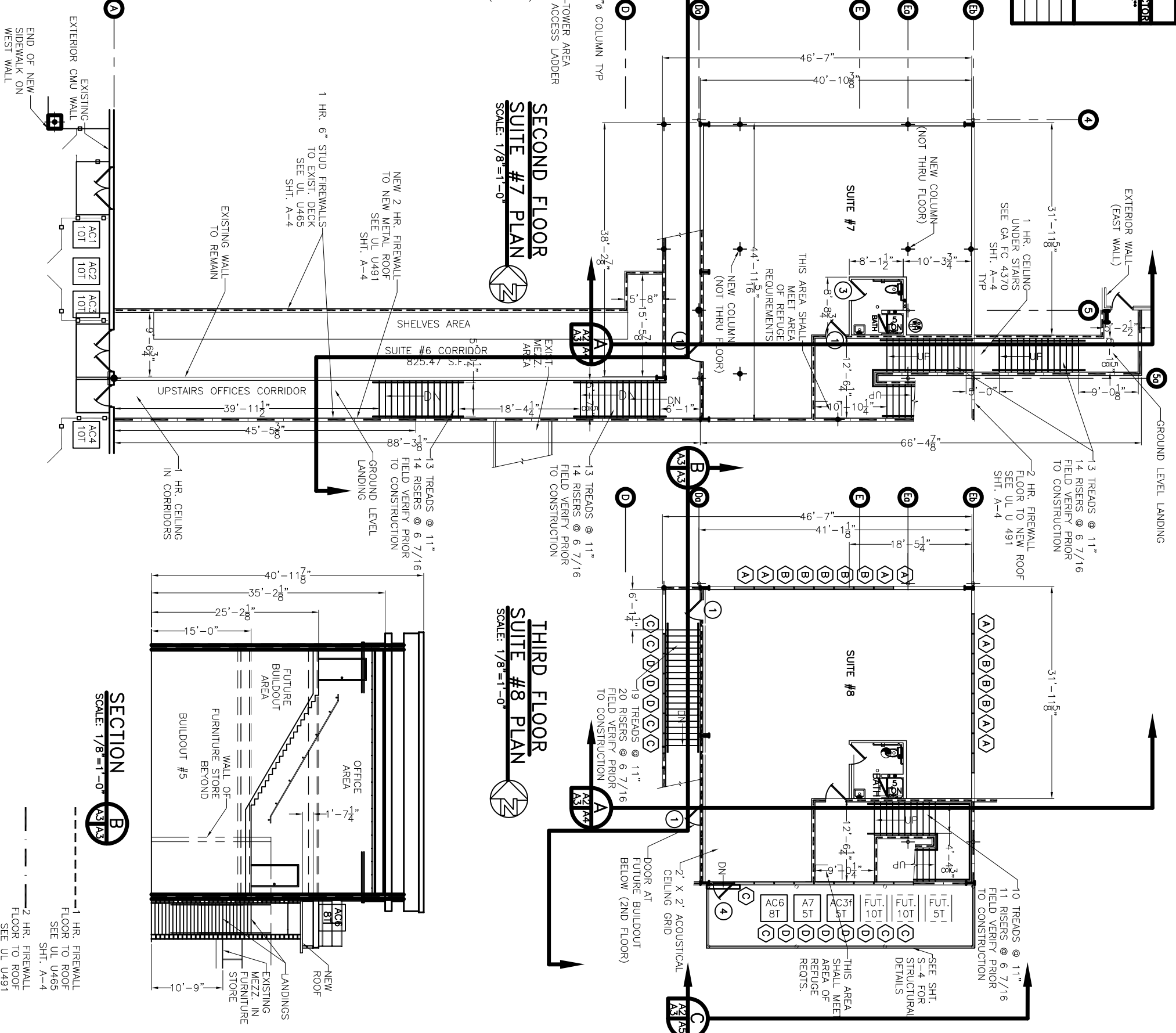
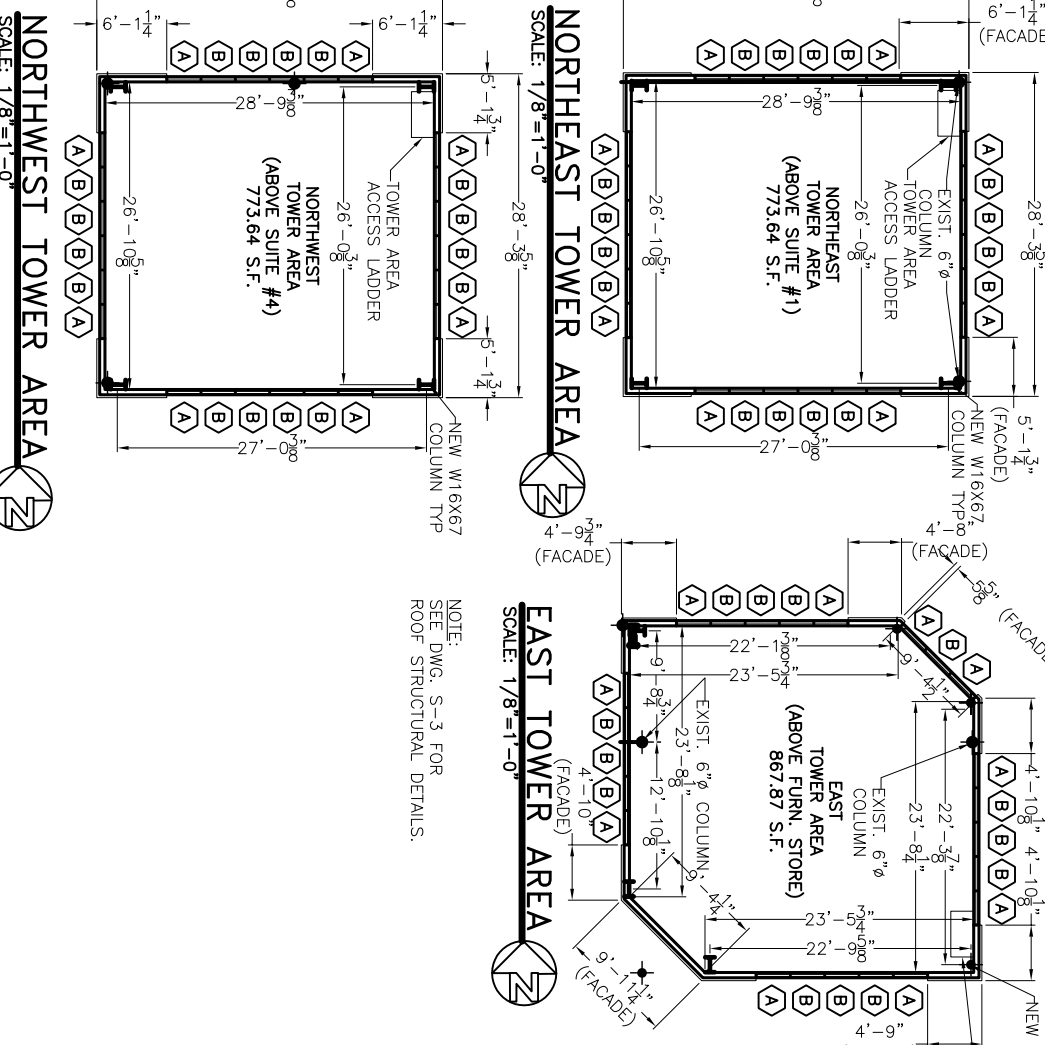


2ND & 3RD FLOOR WINDOW SCHEDULE				MAX U-FACTOR		
TYPE	FRAME	GLASS	LINES	ACCESSORIES	REMARKS	**SEE SHT. A-2**
WINDOW		FIXED				
		VERTICAL SLIDE				
		HORIZONTAL SLIDE				
		STORE FRONT				
A	3/0 x 10/0	STEEL				.75
B	3/0 x 10/0	ALUMINUM				.75
C	3/0 x 10/0	WOOD				.75
D	3/0 x 10/0	TINTED				.75
		PLAIN				
		TRANSLUCENT				
		WIREGLASS				
		SEE ELEVATIONS				
		3/8				
		4/4				
		6/6				
		8/8				
		ALARM				
		SCREEN				
		SHUTTER				
		NONE				
		STORMFRONT GLASS				
		STORMFRONT GLASS, 90 MIN. RATED, SHATTERPROOF				.75
		STORMFRONT GLASS, 90 MIN. RATED, SHATTERPROOF				.75

2ND & 3RD FLOOR DOOR & HARDWARE SCHEDULE				REMARKS
TYPE	FRAME	HINGE	LOCK	ACCESSORIES
1				
DOOR	SOLID WOOD			
1	3/0 x 7/0			
2	3/0 x 6/8			
3	3/0 x 6/8			
4	3/0 x 7/0			
				45 MIN. RATED
				45 MIN.

2ND & 3RD FLOOR FINISH SCHEDULE				REMARKS
FLOOR	BASE	WALLS	CEILING	CEIL. HT.
KITCHENETTE	CARPET	CERAMIC TILE	GYP. BOARD	10'-0"
CORRIDOR	VINYL TILE	CERAMIC TILE	GYP. BOARD	10'-0"
FILE/ COPY ROOM	HARDWOOD FLR	FRP PANEL	GYP. BOARD	10'-0"
TUILITY ROOM	CERAMIC TILE	WAINSCOT	CONCRETE	10'-0"
BATHROOMS, 2ND/ 3RD FLR.			EXISTING WOOD	10'-0"
OFFICE 1			WOOD	10'-0"
OFFICE 2				10'-0"
WEST STAIRWAY				10'-0"
EAST STAIRWAY				10'-0"
FUTURE BUILDOUT				10'-0"



DAMMON ENGINEERING, INC.
EMMETT DAMMON
ARCHITECT
ROBERT WILTSE
 1095 FLORIDA AVENUE
 SIDELL, LA. 70458
 985-649-5832
 WWW.DAMMONENGINEERING.CO
 EMAIL: DAMMONENG@BELLSOUTH.NET

RENOVATION TO MISSISSIPPI MALL

MISSISSIPPI MALL
 1230 S. HAUGH AVE
 PICAYUNE, MS

ARCHITECTURE
 ENGINEERING
 STUDIES
 PLANNING
 INVESTIGATION
 EXPERT WITNESS

SECOND AND THIRD FLOOR PLANS

REV: 12-17-07

SCALE: AS NOTED

JOB#: 1822

DATE: 12-04-06

SHEET

A-3

OF