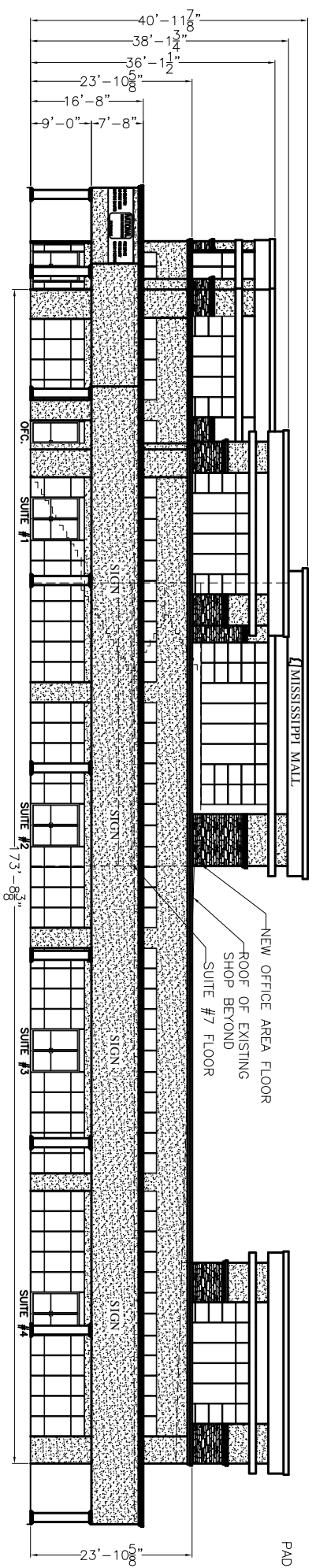
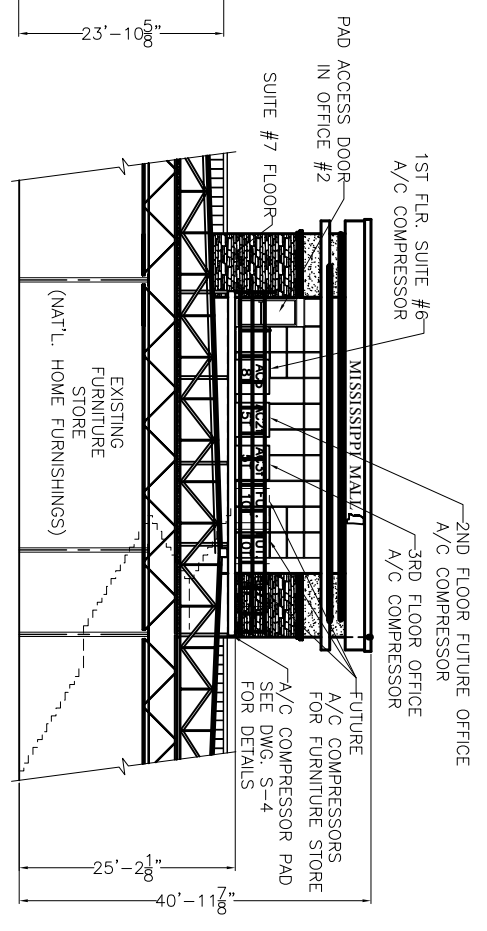


EAST ELEVATION
SCALE: 3/32"=1'-0"

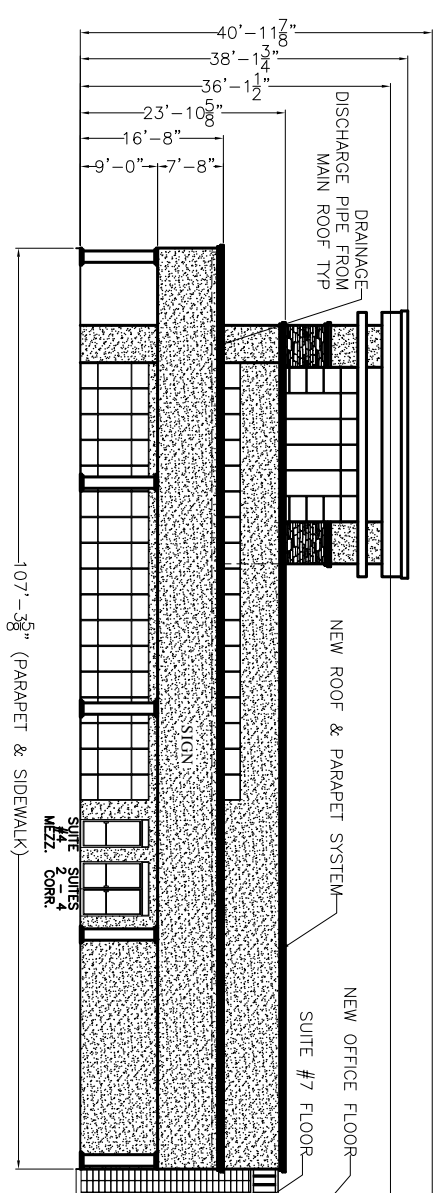


NORTH ELEVATION
SCALE: 3/32"=1'-0"

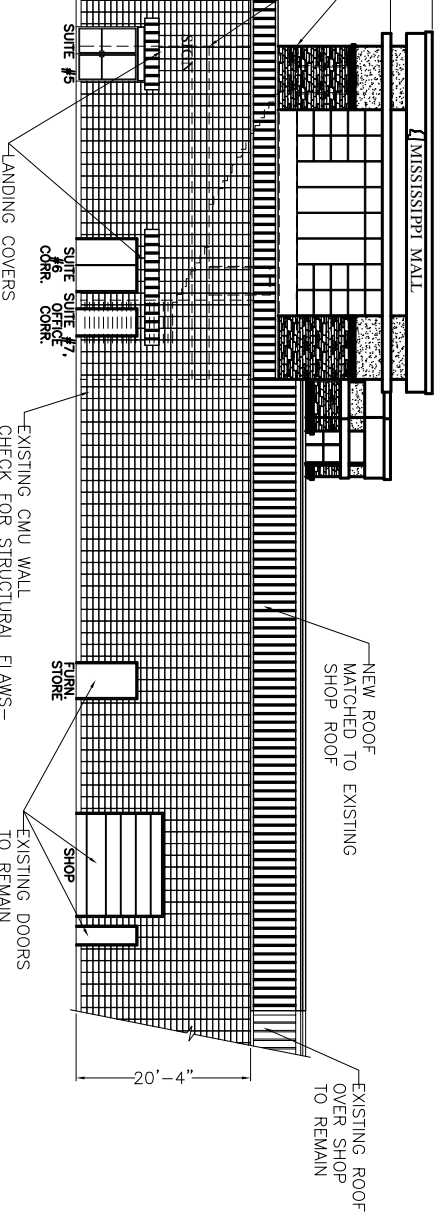


PARTIAL SOUTH ELEVATION

SECTION C
SCALE: 3/32"=1'-0"



WEST ELEVATION
SCALE: 3/32"=1'-0"



DAMMON ENGINEERING, INC.

EMMETT DAMMON

ARCHITECT ROBERT WILFSE

1095 FLORIDA AVENUE
SLIDELL, LA. 70458
985-649-5932

WEBSITE: WWW.DAMMONENGINEERING.CO
EMAIL: DAMMONENG@BELLSOUTH.NET

ARCHITECTURE
ENGINEERING
STUDIES
PLANNING
INVESTIGATION
EXPERT WITNESS

RENOVATION TO MISSISSIPPI MALL

MISSISSIPPI MALL
1230 S. HAUGH AVE
PICAYUNE, MS

NEW ELEVATIONS

REV: 12-17-07
SCALE: AS NOTED
JOB#: 1822
DATE: 12-04-06
SHEET
A-5
OF