



DAMMON ENGINEERING, INC.
EMMETT DAMMON

ARCHITECT
ROBERT WILFISE

1095 FLORIDA AVENUE
 SLIDELL, LA. 70458
 985-649-5832

WEBSITE: WWW.DAMMONENGINEERING.COM
 EMAIL: DAMMONENG@BELLSOUTH.NET

ARCHITECTURE
 ENGINEERING
 STUDIES
 PLANNING
 INVESTIGATION
 EXPERT WITNESS

RENOVATION TO MISSISSIPPI MALL

MISSISSIPPI MALL
 1230 S. HAUGH AVE
 PICAYUNE, MS

ROOF SECTION AND DETAILS ELEVATIONS

REV: 12-17-07

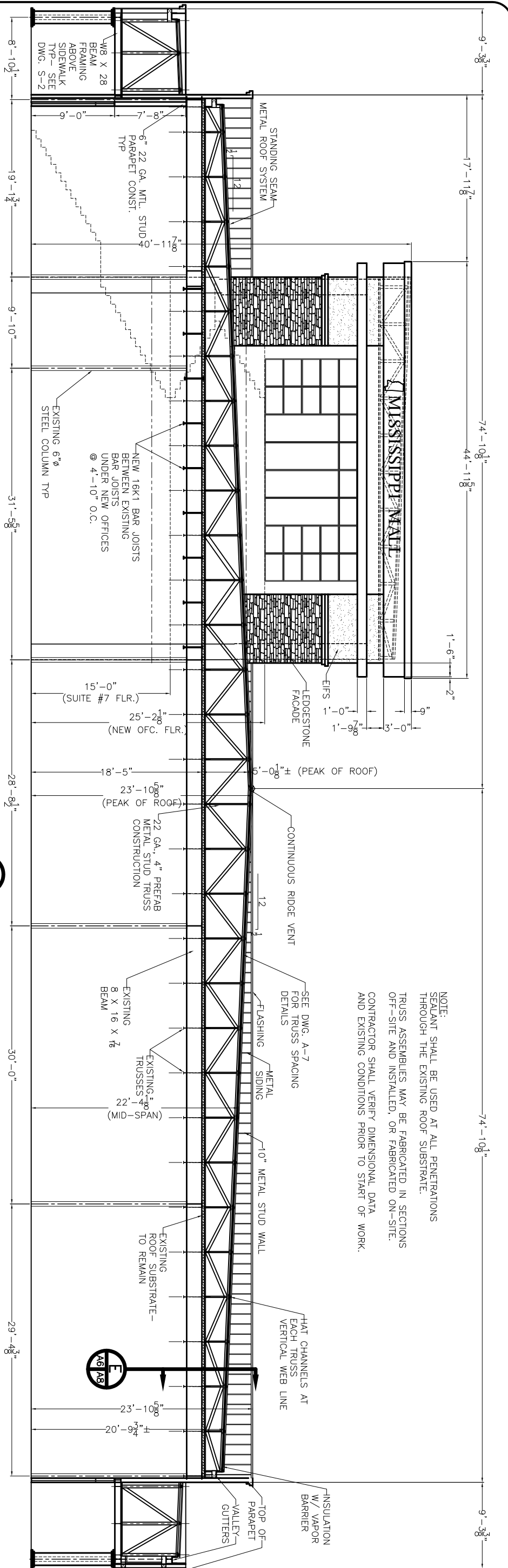
SCALE: AS NOTED

JOB#: 1822

DATE: 12-04-06

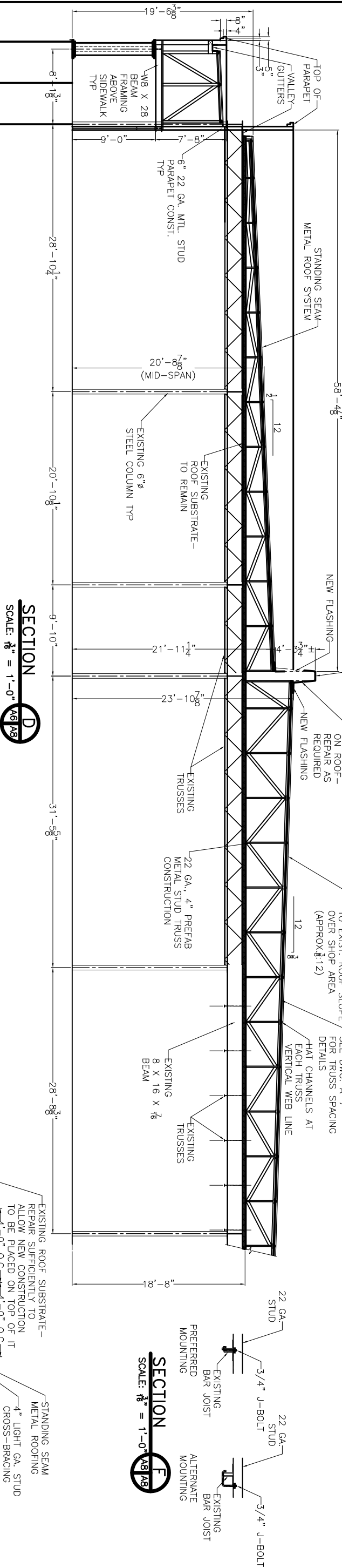
SHEET

A-9



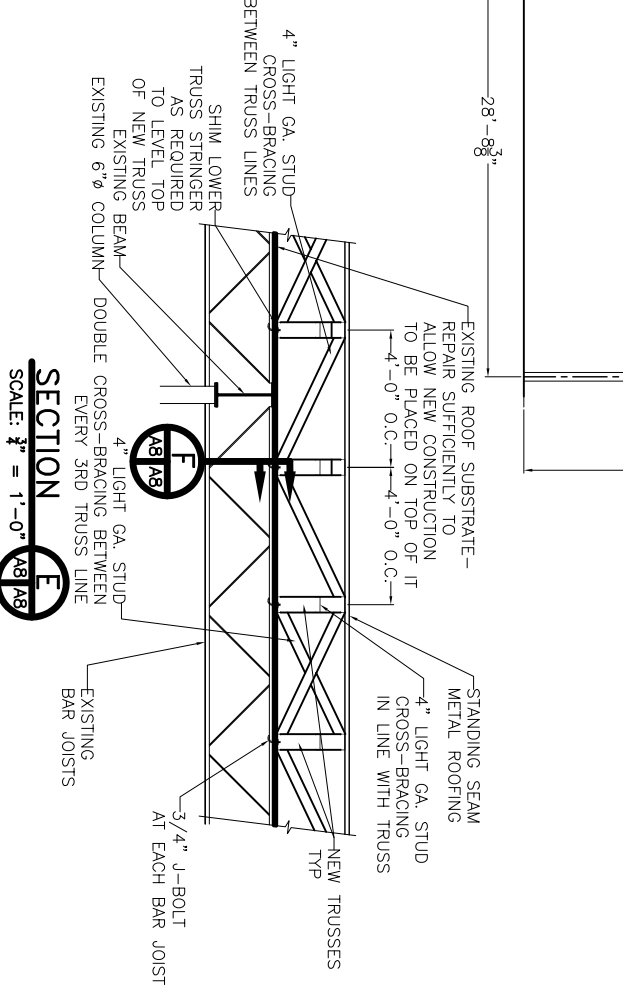
NOTE:
 SEALANT SHALL BE USED AT ALL PENETRATIONS THROUGH THE EXISTING ROOF SUBSTRATE.
 TRUSS ASSEMBLIES MAY BE FABRICATED IN SECTIONS OFF-SITE AND INSTALLED, OR FABRICATED ON-SITE.
 CONTRACTOR SHALL VERIFY DIMENSIONAL DATA AND EXISTING CONDITIONS PRIOR TO START OF WORK.

SECTION C
 SCALE: 1/8" = 1'-0"



SECTION D
 SCALE: 1/8" = 1'-0"

SECTION E
 SCALE: 1/8" = 1'-0"



SECTION F
 SCALE: 1/4" = 1'-0"

OF