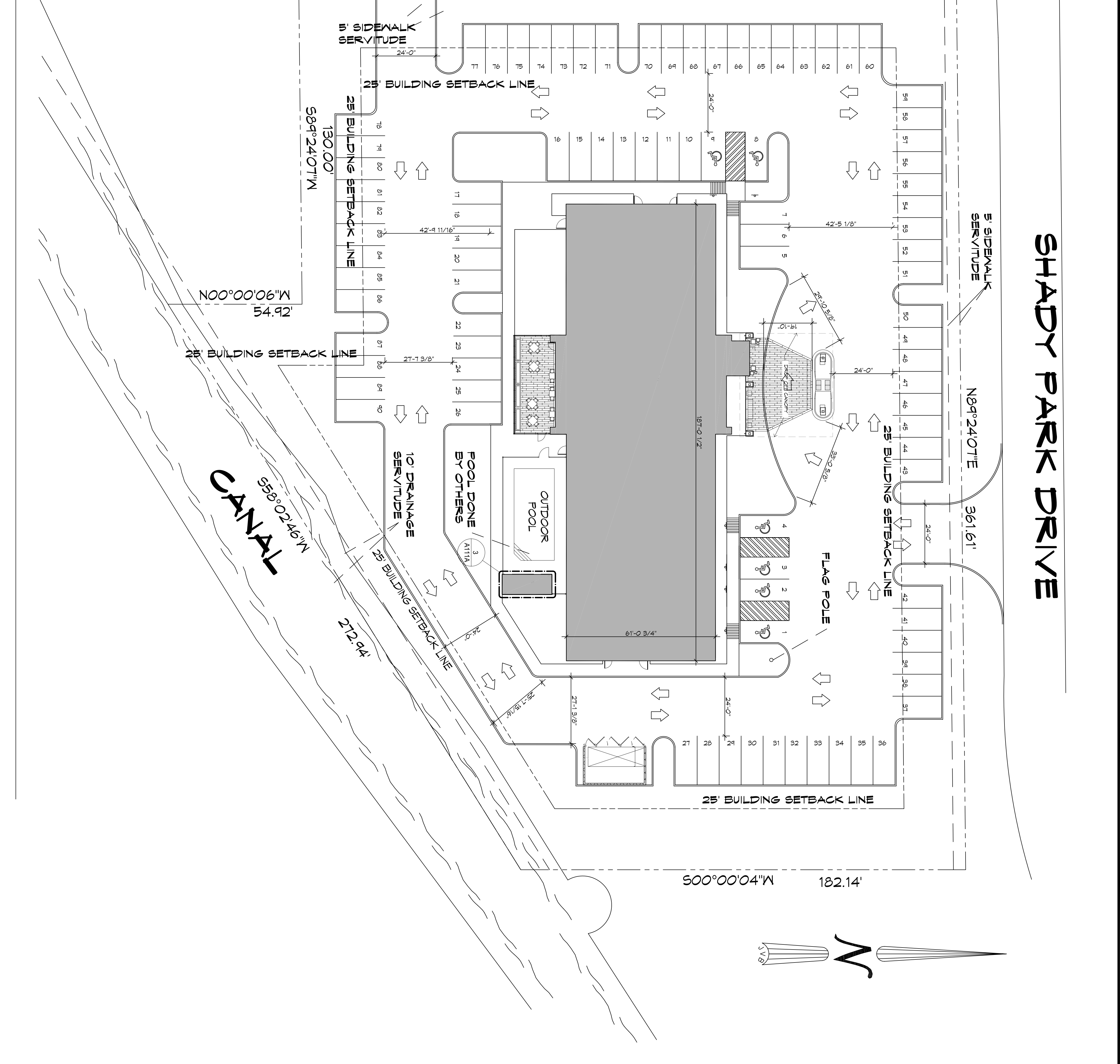
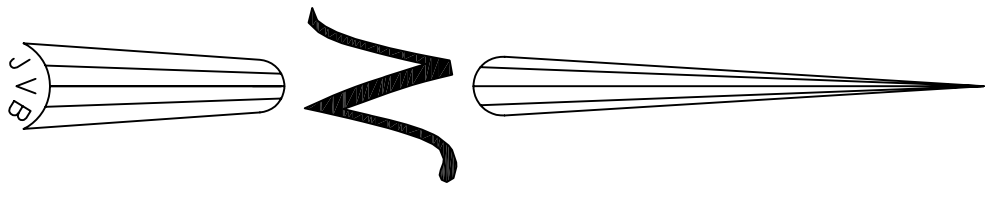


SOUTH RANGE AVENUE (A/K/A/ LA. HWY 3002)

1 SITE PLAN
SCALE: 1" = 20'-0"



SHADY PARK DRIVE EXPRESS



PLANNING	ZONED - C3 COMMERCIAL
PROJECT HOLIDAY INN EXPRESS	
(4) FOUR STORY WITH (81) EIGHTY ONE GUEST ROOMS	
(9) NINE ON FIRST LEVEL	
(24) TWENTY FOUR ON SECOND LEVEL	
(24) TWENTY FOUR ON THIRD LEVEL	
(24) TWENTY FOUR ON FOURTH LEVEL	
TOTAL = 81 ROOMS	
TOTAL SQUARE FOOTAGE = 47,694 SQ. FT.	
FIRST LEVEL = 12,009 SQ. FT.	
SECOND LEVEL = 11,842 SQ. FT.	
THIRD LEVEL = 11,842 SQ. FT.	
FOURTH LEVEL = 11,942 SQ. FT.	
FIRST FLOOR ROOMS: (9) GUESTROOMS (TOTAL)	
DOUBLE QUEEN = 5 EA	
ACCESS X-WIDE KING = 1 EA	
KING = 3 EA	
SECOND, THIRD, & FOURTH FLOOR ROOMS: (24) GUESTROOMS EACH FLOOR	
DOUBLE QUEEN = 18 EA	
DOUBLE QUEEN SUITE = 3 EA	
KING = 4 EA	
KING SUITE = 3 EA	
X-WIDE KING-2	
TOTAL ROOM BREAK DOWN: DOUBLE QUEEN - 44 EA	
DOUBLE QUEEN SUITE = 3 EA	
KING = 15 EA	
KING SUITE = 4 EA	
X-WIDE KING-1	
X-WIDE KING-2	
TOTAL GUESTROOMS = 81 EA	
PARKING REQUIREMENTS	TOTAL PARKING SPACES REQUIRED (1 GUEST BEDROOM) = 81 TOTAL SPACES PROVIDED = 90, INCLUDING 6 HANDICAP
BUILDING ELEVATION	BASE FLOOR ELEVATION = 5F FINISHED FLOOR ELEVATION = 5F
FLOOD ZONE	ZONE - AE

LOCATION NUMBER: 16777	ZZ CODE: BTRJC	DATE: 06-15-17	<small>For these drawings and specifications, designs and a computer-generated title block and sheet remain the property of Dammon Engineering, Inc. and no part thereof shall be copied, reproduced, or used in connection with any other project, without the specific written consent of Dammon Engineering, Inc. All other drawings and specifications shall remain the property of Dammon Engineering, Inc. and no part thereof shall be copied, reproduced, or used in connection with any other project, without the specific written consent of Dammon Engineering, Inc.</small>
SHEET TITLE: SITE PLAN	PROJECT: HOLIDAY INN EXPRESS	DRAWN BY: JAGM	CHECKED BY: CKD
DRAWING NUMBER:	JOB No: 2321	DATE: 06-15-17	DRAWN BY: JAGM
1000	MIKE DESAI SHADY PARK DRIVE LOT 9 DENHAM SPRINGS, LA		

DAMMON

ENGINEERING, INC.

LOUISIANA & MISSISSIPPI

Chief Engineer: Brian Mistich, PE 554 Old Spanish Trail Slidell, LA 70458	www.dammonengineering.com info@dammonengineering.com PH: 985.649.5832
---	---