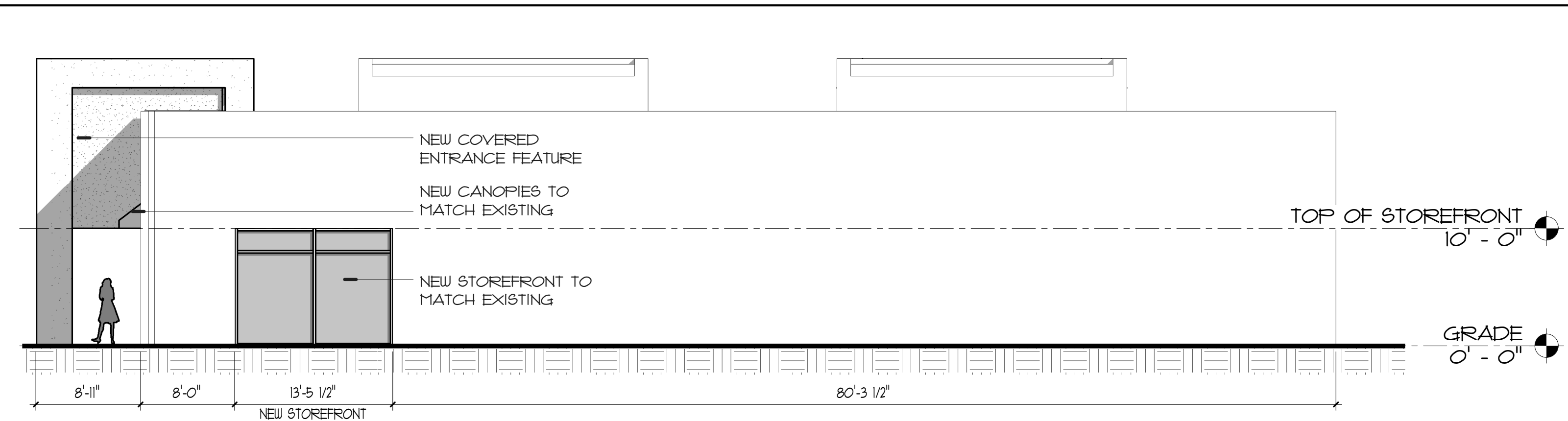
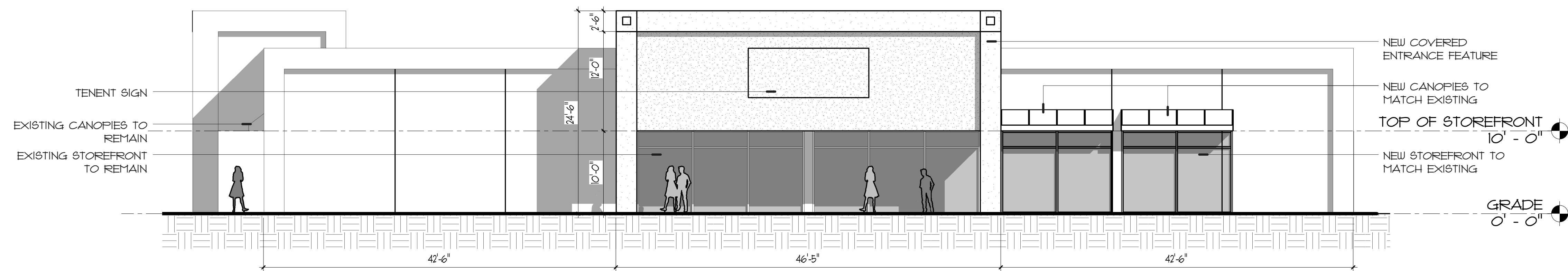


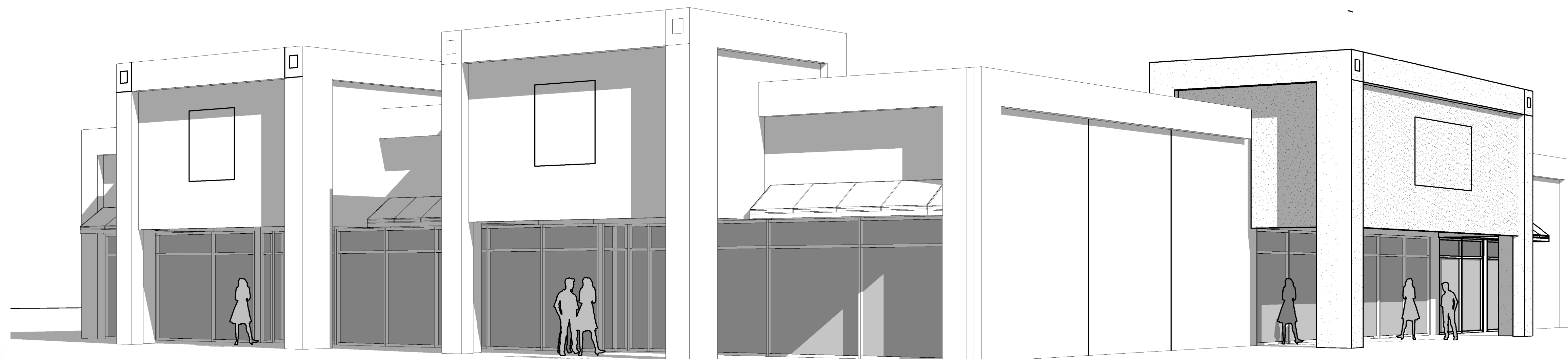
1 South Elevation  
1/8" = 1'-0"



2 West Elevation  
1/8" = 1'-0"



3 East Elevation  
1/8" = 1'-0"



4 3D View 1



ROTISSERIE ♦ GRILL

# GAP BUILDING AT NORTSHORE BLVD.

February 14, 2011

# KVS

architecture

347 Girod Street, Mandeville, Louisiana  
985.674.3077 [www.kvsarchitecture.com](http://www.kvsarchitecture.com)

# MATTRESS FIRM