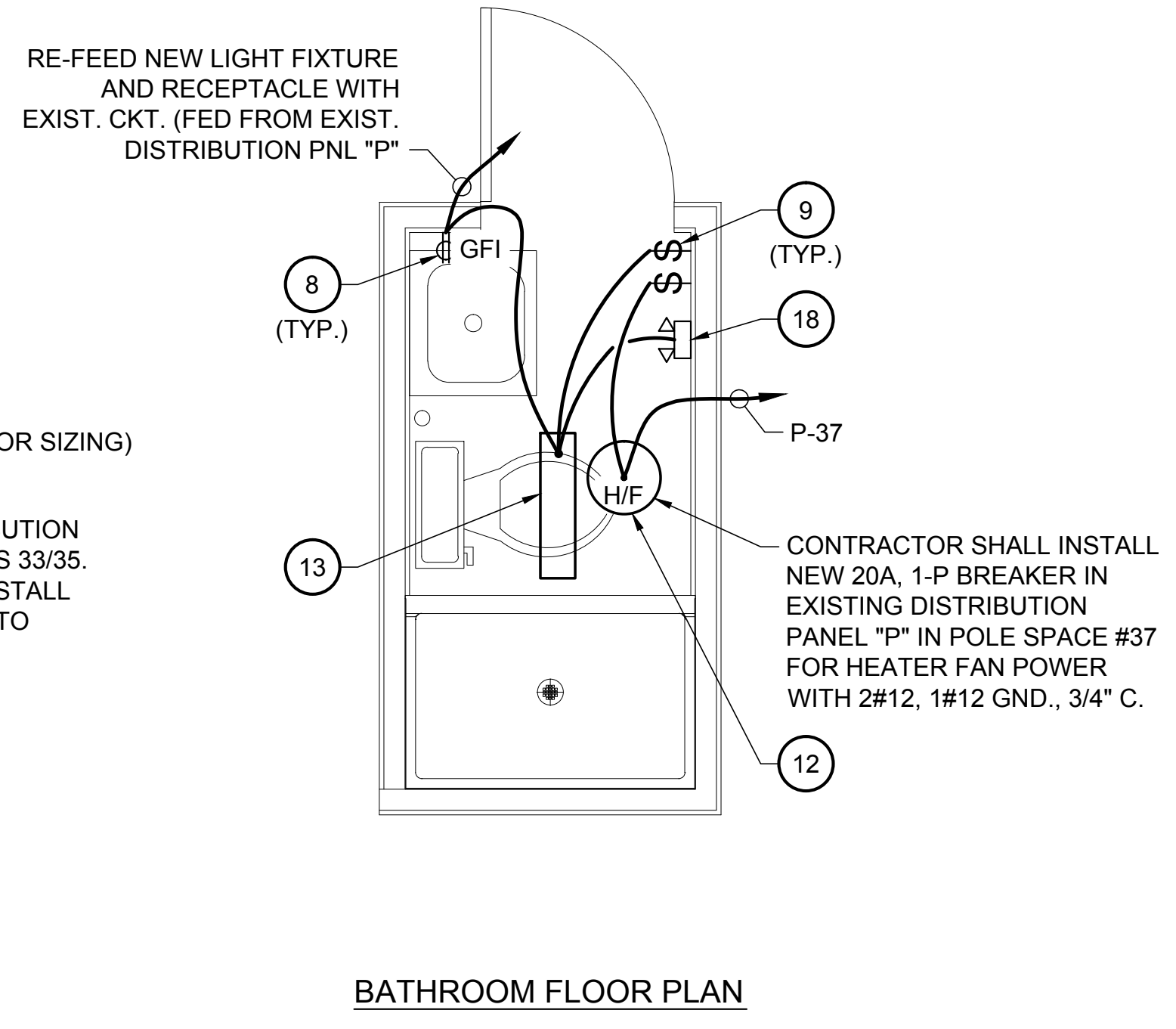
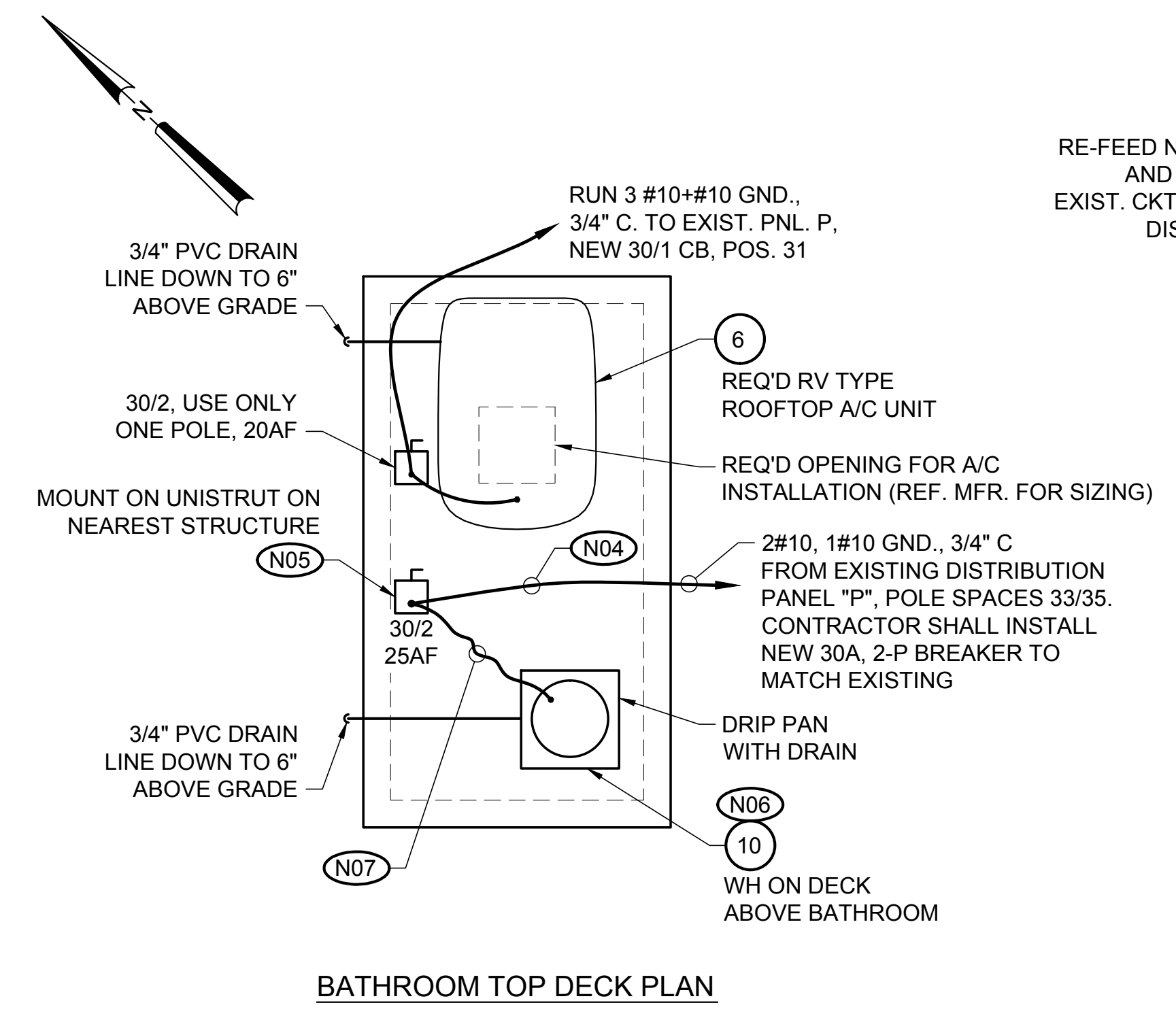


NOTES FOR THIS PLAN:

- DO NOT USE MULTIWIRED METHODS IN THIS PROJECT. EACH PHASE CONDUCTOR SHALL HAVE ITS OWN ASSOCIATED NEUTRAL CONDUCTOR.
- BRANCH CIRCUITS MAY BE GROUPED INTO SINGLE CONDUIT AS FOLLOWS: NO MORE THAN 6 (SIX) CURRENT CARRYING CONDUCTORS PER CONDUIT (PHASES PLUS NEUTRALS). WHERE CONDUCTORS ARE GROUPED, EACH NEUTRAL SHALL BE COLOR CODED WITH STRIPING TO MATCH THE COLOR OF THE RESPECTIVE PHASE CONDUCTOR.
- BRANCH CIRCUIT CONDUCTORS MAY ENTER EITHER THE TOP OR BOTTOM OF PANEL LPA.
- DO NOT CUT ANY HOLES LARGER THAN 1" DIAMETER IN CEILING SUPPORT MEMBERS. ALL SUCH HOLES SHALL BE CUT/PUNCHED AT THE CENTERLINE OF THE CEILING SUPPORT MEMBER.
- DO NOT CUT ANY HOLES NEARER THAN 12" O.C. FROM ONE ANOTHER IN THE CEILING SUPPORT MEMBERS.

BILL OF MATERIALS			
ITEM	DESCRIPTION	APPROVED MANUFACTURERS	CATALOG NUMBER
1	30 POSITION LOAD CENTER, 120/240, 1Ø, 3W, 150A MAIN BUS, MCB (75°C), WITH QO BREAKERS SIZED AS SHOWN ON PANEL SCHEDULE "LPA"	SQUARE D, GE, EATON OR APPROVED EQUAL	-
2	10,000 BTU WINDOW AIR CONDITIONER WITH 11,200 BTU HEAT STRIP (3.3KW), 208/240V WITH WALL SLEEVE	LG ELECTRONICS OR APPROVED EQUAL	LT103HNR
3	4' ENCLOSED INDUSTRIAL FIXTURE WITH TWO 32W T8 LAMPS, 120V.	LITHONIA OR APPROVED EQUAL	XWL232 MV
* 4	14.4 CU FT. (MIN.) REFRIGERATOR, 120V, WITH TOP FREEZER, UL LISTED, WHITE	RCA, FRIGIDAIRE, GENERAL ELECTRIC, OR APPROVED EQUAL	RCA - W4TXNWFQ
5	ELECTRIC COOKTOP, (2) SOLID DISC COOKING SURFACES, INDICATOR LIGHT, 230 VOLT, 15.2 AMPS, STAINLESS STEEL	VERONA OR APPROVED EQUAL	VECTE212FS
6	RV TYPE ROOFTOP A/C UNIT 13,500 BTU, 120V, 14.5 FLA COOLING, 16.0 FLA HEAT STRIP	COLEMAN OR APPROVED EQUAL	MACH 3
7	30A, 250V GROUNDED SINGLE RECEPTACLE, HEAVY DUTY SPECIFICATION GRADE, NEMA 6-30R. WALL RECEPTACLE FOR HVAC UNIT	HUBBELL, LEVITON, COOPER	NEMA-6-30R
8	20A, 125V COMMERCIAL GRADE, GFI DUPLEX RECEPTACLE	HUBBELL, LEVITON, COOPER	-
9	20A, 120V SINGLE POLE/3P WHERE SHOWN TOGGLE SWITCH, HEAVY DUTY SPEC GRADE	HUBBELL, LEVITON, COOPER	-
10	30 GALLON ELECTRIC SHORT TANK WATER HEATER, 4500W, 240V, 1Ø	GENERAL ELECTRIC, HOT POINT, RHEEM, OR APPROVED EQUAL	-
* 11	MICROWAVE, 1,000W	GENERAL ELECTRIC, MAGIC CHEF, LG ELECTRONICS, OR APPROVED EQUAL	-
12	HEATER/FAN, 1,250W	BROAN OR APPROVED EQUAL	154
13	2' ENCLOSED INDUSTRIAL FIXTURE	LITHONIA OR APPROVED EQUAL	EGW217 MV
14	24" LCD MONITOR W/ DVI INPUT, 1920x1080 RESOLUTION	ACER, ASUS, VIEWSONIC, DELL, OR EQUAL	ACER V243HAJbd, BLACK, 24" SCREEN, 2MS(GTG), 300cd/M2, ACM-80,000:1
15	PoE CAMERA MOUNTED IN MINI-DOME	-	-
16	CAMERA EQUIPMENT IN 24" RACK	-	-
17	MINI WALL PACK, COMPACT FLUORESCENT, DIE-CAST ALUMINUM HOUSING, BRONZE FINISH, POLYCARBONATE LENS, 120V, UL LISTED WET LOCATION, (2) 32 WATT CFL LAMPS, PLUG IN SOCKETS, BATTERY BACKUP FOR BOTH LAMPS	EELP LIGHTING, OR APPROVED EQUAL	EELP MODEL WP-18
18	EMERGENCY LIGHTING 120V, SW MR16, 6V LAMPS, SQUARE HEADS (TWO), 10.8W, 6V LEAD CALCIUM BATTERY	SURE-LITES EMERGENCY LIGHTING	SERIES CC3
19	EXIT LIGHT WITH LED EMERGENCY HEADS, RED LED EXIT LETTERING, NI-CAD BATTERY, WHITE THERMOPLASTIC HOUSING, UL DAMP LOCATION LISTING, 120V.	LITHONIA LHQM-LED OR APPROVED EQUAL	LHQM-LED-R
20	POINT OF USE WATER HEATER 7KW, 240V, 1Ø, 29 FLA 2.5GPM MAX. FLOW, 50 DEG. F RISE @ 0.96GPM	RHEEM, OR APPROVED EQUAL	RTE-7

* ITEM NOT IN CONTRACT



BATHROOM POWER & LIGHTING PLAN
SCALE: 1/2" = 1'-0"

These plans and specifications have been prepared by me or under my close personal supervision, and to the best of my knowledge and belief, they meet all applicable codes and regulations. I will not supervise the work.

Bruce D. Barton
Date: _____
BRUCE D. BARTON, P. 18296

CADD FILE NAME: _____

REVISIONS	DATE	REMARKS

DESIGNED BY: RAC
DRAWN BY: EAO
CHECKED BY: RAC

DATE: 10/04/2012
SCALE: AS SHOWN
JOB NO: 025-006-01

PLAQUEMINES PARISH QUIET ROOMS PACKAGE NO. 2
DIAMOND PUMP STATION, HAYES PUMP STATION, GRAND DELIARD PUMP STATION, AND DUVIC PUMP STATION
DIAMOND PUMP STATION
POWER AND LIGHTING PLAN

SHEET NO. **DM-E1**

20 of 67

