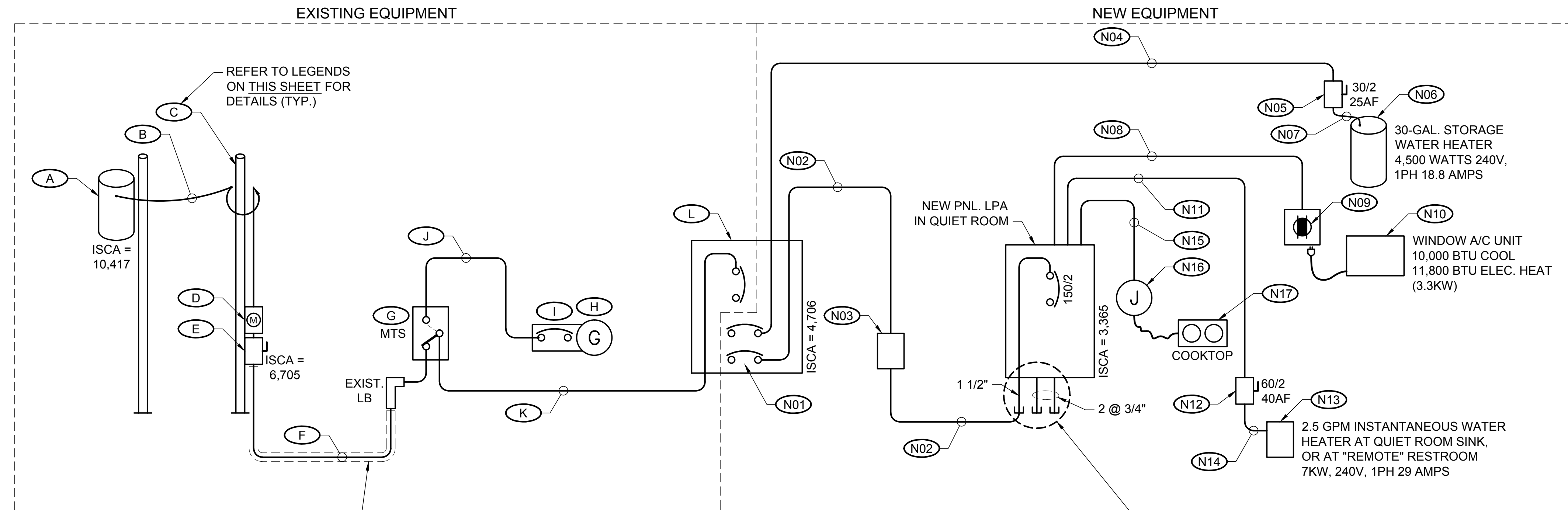


NEW EQUIPMENT LEGEND	
(N01)	NEW BRANCH CIRCUIT BREAKER INSTALLED IN EXISTING SPACE. REFER TO PANEL SCHEDULES FOR DETAILS.
(N02)	3#2+#4 GND., 1 1/2" C.
(N03)	12" W. x 16" L. x 6" D. NEMA 4X STAINLESS STEEL PULLBOX. DO NOT MAKE TAPS IN THIS BOX. THE QUIET ROOM FEEDER SHALL BE ONE CONTINUOUS PIECE.
(N04)	2#8+#10 GND., 3/4" C.
(N05)	30/2 FUSIBLE GENERAL DUTY DISC. SWITCH WITH VISIBLE BLADES (NOT A PULLOUT). PROVIDE 25 AMP FUSES RATED, 250 V, 200 KAIC, DUAL ELEMENT, TIME DELAY WITH BLOWN FUSE INDICATOR WINDOW
(N06)	30-GALLON STORAGE TYPE WATER HEATER
(N07)	2#10+#10 GND., 3/4" C., GREENFIELD
(N08)	2#8+#10 GND., 3/4" C.
(N09)	30-AMP, 250 VOLT FLUSH RECEPTACLE FOR WINDOW HVAC UNIT. NEMA TYPE 30-6R.
(N10)	WINDOW HVAC UNIT WITH ELECTRIC HEAT, 240 VOLTS
(N11)	3#8+#10 GND., 3/4" C.
(N12)	60/2 FUSIBLE GENERAL DUTY DISC. SWITCH WITH VISIBLE BLADES (PULLOUT TYPE OKAY). PROVIDE 40 AMP FUSES RATED, 250 V, 200 KAIC, DUAL ELEMENT, TIME DELAY WITH BLOWN FUSE INDICATOR WINDOW
(N13)	INSTANTANEOUS WATER HEATER UNDER SINK COUNTER
(N14)	3#10+#10 GND., 3/4" C.
(N15)	3#10+#10 GND., 3/4" C.
(N16)	4" SQUARE JB UNDER COUNTER FOR COOKTOP CONNECTIONS
(N17)	(2) BURNER COOKTOP, 240V, 1PH, 3500 W TOTAL



THIS EXIST. UNDERGROUND SERVICE FEEDER "F" WILL INTERFERE WITH THE NEW CONC. FOOTING FOR THE QUIET ROOM EXTERIOR METAL STAIR. THEREFORE, INSTALL A NEW 2" DIA. SCH. 80 PVC CONDUIT, MIN. 24" DEEP, MIN. OF 24" FROM THE NEW FOOTING, W/ 3 #3/0 + #2 GND., FROM THE EXIST. MAIN FUSED DISC. SW. TO THE EXIST. LB FITTING ON THE EXTERIOR WALL OF THE PUMP STATION (NEW WIRING SHALL RUN ALL THE WAY INTO THE EXIST. MTS IN ONE PIECE). OFFSET AND STRAP THE NEW CONDUIT TO THE BLDG. CONC. WALL. REMOVE THE EXIST. UNDERGROUND CONDUIT AND FEEDER.

PARTIAL ELECTRICAL RISER DIAGRAM
SCALE: N.T.S.

THE PANEL FEEDER CONDUIT, PLUS TWO SPARE 3/4" CONDUITS, SHALL BE STUBBED DOWN THRU THE FOAM INSULATION BELOW THE QUIET ROOM CONTAINER FLOORING. THE FEEDER CONDUIT SHALL THEN BE EXTENDED TO PULLBOX "N03", ONCE THE CONTAINER IS SET INTO PLACE. CAP THE TWO SPARE 3/4" CONDUITS FOR FUTURE USE.

These plans and specifications have been prepared by me or under my direct personal supervision, and to the best of my knowledge and belief, they meet all applicable codes and ordinances. I will not supervise the work.

Bruce D. Barton
BRUCE D. BARTON, P.E.
DATE: 10/14/2012

CADD FILE NAME:

REVISIONS	DATE	REMARKS

DESIGNED BY: RAC
DRAWN BY: EAO
CHECKED BY: RAC

DATE: 10/04/2012
SCALE: AS SHOWN
JOB NO: 025-006-01

ALL SOUTH CONSULTING ENGINEERS, L.L.C.
6852 PAPERWORTH AVENUE
METairie, LA 70005
6040 922-2785

EXISTING EQUIPMENT LEGEND	
(A)	POWER CO. TRANSFORMER AND WOOD POLE, 120/240 VOLT, 1PH, 3W SERVICE 50 KVA = 208 FLA. IF 2% IMP., ISCA = 10,417A
(B)	POWER CO. OVERHEAD SERVICE DROP
(C)	WOOD SERVICE DROP POLE
(D)	POWER CO. METER AND METER PAN, 120/240 VOLT, 1PH, 3W SERVICE 200 AMPS
(E)	MAIN FUSIBLE DISCONNECT SWITCH, 200 AMPS
(F)	UNDERGROUND FEEDER TO BLDG. ELECTRICAL EQUIPMENT
(G)	MANUAL TRANSFER SWITCH (MTS) INSIDE PUMP STATION BLDG. 3 POLE, 250 VOLT, 200 AMPS
(H)	DIESEL GENERATOR SET INSIDE PUMP STATION BLDG., 120/240 VOLTS, 1PH, 3W
(I)	MAIN CIRCUIT BREAKER ON GENERATOR SET, 175 AMPS
(J)	GENERATOR SET FEEDER TO MTS.
(K)	MTS LOAD FEEDER TO DISTRIBUTION PANEL
(L)	DISTRIBUTION PANEL, 200 AMPS MCB 120/240 VOLTS, 1PH, 3W

NOTE:

- ALL WIRE SIZES NOT SPECIFICALLY CALLED OUT SHALL BE 2#12+#12 GND., 3/4" C.
- THERE SHALL BE NO MULTIWIRED BRANCH CIRCUITS. PROVIDE SEPARATE NEUTRAL FOR ALL 120 VOLT CIRCUITS. IDENTIFY NEUTRAL WITH COLOR CODE TO MATCH PHASE CONDUCTORS.
- ALL DEVICES SHALL BE IVORY.
- ALL DEVICE PLATES SHALL BE STAINLESS STEEL.

NEW PANEL SCHEDULE											
PANEL NAME: LPA		ENCLOSURE: NEMA1 ONEMA3R ONEMA12 NEMA4X O STAINLESS STEEL									
LOCATION: INSIDE QUIET ROOM CONTAINER		FEED: LOCKABLE COVER									
FOUND ON DWG. NO.:		BRANCHES: TOP, BOTTOM, BOLT-ON, PANELBOARD CONSTR., STAB-IN, LOAD CENTER CONSTR.									
FED FROM: EXISTING DISTRIBUTION PANEL		MAINS: 150 AMP									
AVAILABLE FAULT CURRENT <10,000 SYM. AMPS		● FACTORY BOLT-ON MAIN CIRCUIT BREAKER, RATED 22KAIC									
PANEL AIC RATING 10,000		○ SHUNT TRIP MAIN CB									
● FULLY RATED		○ MAIN LUGS ONLY									
○ SERIES RATED FOR _____ KAIC FROM _____		○ UL LISTED FEED-THRU LUGS									
FEEDER: 3 # 2 + #4 GND., 1-1/2" C.		NEUTRAL MOUNTING: 100% ○ 200% ● SURFACE ○ FLUSH									
● FEEDER PROTECTED BY OVERCURRENT DEVICE		○ SURGE ARRESTOR WIRED TO LOAD SIDE OF MAIN, 2 POLE, 175V, JOSLYN Z2-175-OA, OR EQUAL									
REMARKS:		● PANEL HAS FRONT ACCESS ONLY									
1. "30 CIRCUITS" MEANS 30 FULL-SIZED BREAKER POSITIONS. THERE SHALL BE NO PIGGYBACK, MINIATURE, NOR ANY HALF-HEIGHT BREAKERS.		● ALL COPPER BUSSING									
		● FURNISH COPPER GROUND BAR KIT									
		○ ALSO FURNISH ADDITIONAL ISOLATED GROUND BAR KIT									
		○ SERVICE ENTRANCE LABEL									
		● PANEL NAMEPLATE, 2"x4" ENGRAVED PLASTIC LAMINATE									
		USE 1/4" LETTERING FOR PANEL NAME, ON 1 LINE									
		USE 1/8" LETTERING FOR VOLTS, AMPS, WHERE FED FROM, MO./YR. INSTALLED, ON 4 LINES									
		● BLACK FIELD, WHITE LETTERS									
		○ RED FIELD, WHITE LETTERS									
		○ SURGE ARRESTOR WIRED TO LOAD SIDE OF MAIN, 2 POLE, 175V, JOSLYN Z2-175-OA, OR EQUAL									
		● 100% ○ 200%									
		● SURFACE ○ FLUSH									
		○ SURGE ARRESTOR WIRED TO LOAD SIDE OF MAIN, 2 POLE, 175V, JOSLYN Z2-175-OA, OR EQUAL									
		● BLACK FIELD, WHITE LETTERS									
		○ RED FIELD, WHITE LETTERS									
		○ SURGE ARRESTOR WIRED TO LOAD SIDE OF MAIN, 2 POLE, 175V, JOSLYN Z2-175-OA, OR EQUAL									
		● 100% ○ 200%									
		● SURFACE ○ FLUSH									
		○ SURGE ARRESTOR WIRED TO LOAD SIDE OF MAIN, 2 POLE, 175V, JOSLYN Z2-175-OA, OR EQUAL									
		● BLACK FIELD, WHITE LETTERS									
		○ RED FIELD, WHITE LETTERS									
		○ SURGE ARRESTOR WIRED TO LOAD SIDE OF MAIN, 2 POLE, 175V, JOSLYN Z2-175-OA, OR EQUAL									
		● 100% ○ 200%									
		● SURFACE ○ FLUSH									
		○ SURGE ARRESTOR WIRED TO LOAD SIDE OF MAIN, 2 POLE, 175V, JOSLYN Z2-175-OA, OR EQUAL									
		● BLACK FIELD, WHITE LETTERS									
		○ RED FIELD, WHITE LETTERS									
		○ SURGE ARRESTOR WIRED TO LOAD SIDE OF MAIN, 2 POLE, 175V, JOSLYN Z2-175-OA, OR EQUAL									
		● 100% ○ 200%									
		● SURFACE ○ FLUSH									
		○ SURGE ARRESTOR WIRED TO LOAD SIDE OF MAIN, 2 POLE, 175V, JOSLYN Z2-175-OA, OR EQUAL									
		● BLACK FIELD, WHITE LETTERS									
		○ RED FIELD, WHITE LETTERS									
		○ SURGE ARRESTOR WIRED TO LOAD SIDE OF MAIN, 2 POLE, 175V, JOSLYN Z2-175-OA, OR EQUAL									
		● 100% ○ 200%									
		● SURFACE ○ FLUSH									
		○ SURGE ARRESTOR WIRED TO LOAD SIDE OF MAIN, 2 POLE, 175V, JOSLYN Z2-175-OA, OR EQUAL									
		● BLACK FIELD, WHITE LETTERS									
		○ RED FIELD, WHITE LETTERS									
		○ SURGE ARRESTOR WIRED TO LOAD SIDE OF MAIN, 2 POLE, 175V, JOSLYN Z2-175-OA, OR EQUAL									
		● 100% ○ 200%									
		● SURFACE ○ FLUSH									
		○ SURGE ARRESTOR WIRED TO LOAD SIDE OF MAIN, 2 POLE, 175V, JOSLYN Z2-175-OA, OR EQUAL									
		● BLACK FIELD, WHITE LETTERS									
		○ RED FIELD, WHITE LETTERS									
		○ SURGE ARRESTOR WIRED TO LOAD SIDE OF MAIN, 2 POLE, 175V, JOSLYN Z2-175-OA, OR EQUAL									
		● 100% ○ 200%									
		● SURFACE ○ FLUSH									
		○ SURGE ARRESTOR WIRED TO LOAD SIDE OF MAIN, 2 POLE, 175V, JOSLYN Z2-175-OA, OR EQUAL									
		● BLACK FIELD, WHITE LETTERS									
		○ RED FIELD, WHITE LETTERS									
		○ SURGE ARRESTOR WIRED TO LOAD SIDE OF MAIN, 2 POLE, 175V, JOSLYN Z2-175-OA, OR EQUAL									
		● 100% ○ 200%									
		● SURFACE ○ FLUSH									
		○ SURGE ARRESTOR WIRED TO LOAD SIDE OF MAIN, 2 POLE, 175V, JOSLYN Z2-175-OA, OR EQUAL									
		● BLACK FIELD, WHITE LETTERS									
		○ RED FIELD, WHITE LETTERS									
		○ SURGE ARRESTOR WIRED TO LOAD SIDE OF MAIN, 2 POLE, 175V, JOSLYN Z2-175-OA, OR EQUAL									
		● 100% ○ 200%									
		● SURFACE ○ FLUSH									
		○ SURGE ARRESTOR WIRED TO LOAD SIDE OF MAIN, 2 POLE, 175V, JOSLYN Z2-175-OA, OR EQUAL									
		● BLACK FIELD, WHITE LETTERS									
		○ RED FIELD, WHITE LETTERS									
		○ SURGE ARRESTOR WIRED TO LOAD SIDE OF MAIN, 2 POLE, 175V, JOSLYN Z2-175-OA, OR EQUAL									
		● 100% ○ 200%									
		● SURFACE ○ FLUSH									
		○ SURGE ARRESTOR WIRED TO LOAD SIDE OF MAIN, 2 POLE, 175V, JOSLYN Z2-175-OA, OR EQUAL									
		● BLACK FIELD, WHITE LETTERS									
		○ RED FIELD, WHITE LETTERS									
		○ SURGE ARRESTOR WIRED TO LOAD SIDE OF MAIN, 2 POLE, 175V, JOSLYN Z2-175-OA, OR EQUAL									
		● 100% ○ 200%									
		● SURFACE ○ FLUSH									
		○ SURGE ARRESTOR WIRED TO LOAD SIDE OF MAIN, 2 POLE, 175V, JOSLYN Z2-175-OA, OR EQUAL									
		● BLACK FIELD, WHITE LETTERS									
		○ RED FIELD, WHITE LETTERS									
		○ SURGE ARRESTOR WIRED TO LOAD SIDE OF MAIN, 2 POLE, 175V, JOSLYN Z2-175-OA, OR EQUAL									
		● 100% ○ 200%									
		● SURFACE ○ FLUSH									
		○ SURGE ARRESTOR WIRED TO LOAD SIDE OF MAIN, 2 POLE, 175V, JOSLYN Z2-175-OA, OR EQUAL									
		● BLACK FIELD, WHITE LETTERS									
		○ RED FIELD, WHITE LETTERS									
		○ SURGE ARRESTOR WIRED TO LOAD SIDE OF MAIN, 2 POLE, 175V, JOSLYN Z2-175-OA, OR EQUAL									
		● 100% ○ 200%									
		● SURFACE ○ FLUSH									
		○ SURGE ARRESTOR WIRED TO LOAD SIDE OF MAIN, 2 POLE, 175V, JOSLYN Z2-175-OA, OR EQUAL									
		● BLACK FIELD, WHITE LETTERS									
		○ RED FIELD, WHITE LETTERS									
		○ SURGE ARRESTOR WIRED TO LOAD SIDE OF MAIN, 2 POLE, 175V, JOSLYN Z2-175-OA, OR EQUAL									
		● 100% ○ 200%									
		● SURFACE ○ FLUSH									
		○ SURGE ARRESTOR WIRED TO LOAD SIDE OF MAIN, 2 POLE, 175V, JOSLYN Z2-175-OA, OR EQUAL									
		● BLACK FIELD, WHITE LETTERS									
		○ RED FIELD, WHITE LETTERS									
		○ SURGE ARRESTOR WIRED TO LOAD SIDE OF MAIN, 2 POLE, 175V, JOSLYN Z2-175-OA, OR EQUAL									
		● 100% ○ 200%									
		● SURFACE ○ FLUSH									
		○ SURGE ARRESTOR WIRED TO LOAD SIDE OF MAIN, 2 POLE, 175V, JOSLYN Z2-175-OA, OR EQUAL									
		● BLACK FIELD, WHITE LETTERS									
		○ RED FIELD, WHITE LETTERS									
		○ SURGE ARRESTOR WIRED TO LOAD SIDE OF MAIN, 2 POLE, 175V, JOSLYN Z2-175-OA, OR EQUAL									
		● 100% ○ 200%									
		● SURFACE ○ FLUSH									
		○ SURGE ARRESTOR WIRED TO LOAD SIDE OF MAIN, 2 POLE, 175V, JOSLYN Z2-175-OA, OR EQUAL									
		● BLACK FIELD, WHITE LETTERS									
		○ RED FIELD, WHITE LETTERS									
		○ SURGE ARRESTOR WIRED TO LOAD SIDE OF MAIN, 2 POLE, 175V, JOSLYN Z2-175-OA, OR EQUAL									
		● 100% ○ 200%									
		● SURFACE ○ FLUSH									
		○ SURGE ARRESTOR WIRED TO LOAD SIDE OF MAIN, 2 POLE, 175V, JOSLYN Z2-175-OA, OR EQUAL									
		● BLACK FIELD, WHITE LETTERS									
		○ RED FIELD, WHITE LETTERS									
		○ SURGE ARRESTOR WIRED TO LOAD SIDE OF MAIN, 2 POLE, 175V, JOSLYN Z2-175-OA, OR EQUAL									
		● 100% ○ 200%									
		● SURFACE ○ FLUSH									
		○ SURGE ARRESTOR WIRED TO LOAD SIDE OF MAIN, 2 POLE, 175V, JOSLYN Z2-175-OA, OR EQUAL									
		● BLACK FIELD, WHITE LETTERS									
		○ RED FIELD, WHITE LETTERS									
		○ SURGE ARRESTOR WIRED TO LOAD SIDE OF MAIN, 2 POLE, 175V, JOSLYN Z2-175-OA, OR EQUAL									
		● 100% ○ 200%									
		● SURFACE ○ FLUSH									
		○ SURGE ARRESTOR WIRED TO LOAD SIDE OF MAIN, 2 POLE, 175V, JOSLYN Z2-175-OA, OR EQUAL									
		● BLACK FIELD, WHITE LETTERS									
		○ RED FIELD, WHITE LETTERS									
		○ SURGE ARRESTOR WIRED TO LOAD SIDE OF MAIN, 2 POLE, 175V, JOSLYN Z2-175-OA, OR EQUAL									
		● 100% ○ 200%									
		● SURFACE ○ FLUSH									
		○ SURGE ARRESTOR WIRED TO LOAD SIDE OF MAIN, 2 POLE, 175V, JOSLYN Z2-175-OA, OR EQUAL									
		● BLACK FIELD, WHITE LETTERS									
		○ RED FIELD, WHITE LETTERS									
		○ SURGE ARRESTOR WIRED TO LOAD SIDE OF MAIN, 2 POLE, 175V, JOSLYN Z2-175-OA, OR EQUAL									
		● 100% ○ 200%									
		● SURFACE ○ FLUSH									
		○ SURGE ARRESTOR WIRED TO LOAD SIDE OF MAIN, 2 POLE, 175V, JOSLYN Z2-175-OA, OR EQUAL									
		● BLACK FIELD, WHITE LETTERS									
		○ RED FIELD, WHITE LETTERS									
		○ SURGE ARRESTOR WIRED TO LOAD SIDE OF MAIN, 2 POLE, 175V, JOSLYN Z2-175-OA, OR EQUAL									
		● 100% ○ 200%									
		● SURFACE ○ FLUSH									
		○ SURGE ARRESTOR WIRED TO LOAD SIDE OF MAIN, 2 POLE, 175V, JOSLYN Z2-175-OA, OR EQUAL									
		● BLACK FIELD, WHITE LETTERS									
		○ RED FIELD, WHITE LETTERS									
		○ SURGE ARRESTOR WIRED TO LOAD SIDE OF MAIN, 2 POLE, 175V, JOSLYN Z2-175-OA, OR EQUAL									
		● 100% ○ 200%									
		● SURFACE ○ FLUSH									
		○ SURGE ARRESTOR WIRED TO LOAD SIDE OF MAIN, 2 POLE, 175V, JOSLYN Z2-175-OA, OR EQUAL									
		● BLACK FIELD, WHITE LETTERS									
		○ RED FIELD, WHITE LETTERS									
		○ SURGE ARRESTOR WIRED TO LOAD SIDE OF MAIN, 2 POLE, 175V, JOSLYN Z2-175-OA, OR EQUAL									
		● 100% ○ 200%									
		● SURFACE ○ FLUSH									
		○ SURGE ARRESTOR WIRED TO LOAD SIDE OF MAIN, 2 POLE, 175V, JOSLYN Z2-175-OA, OR EQUAL									
		● BLACK FIELD, WHITE LETTERS									
		○ RED FIELD, WHITE LETTERS									
		○ SURGE ARRESTOR WIRED TO LOAD SIDE OF MAIN, 2 POLE, 175V, JOSLYN Z2-175-OA, OR EQUAL									
		● 100% ○ 200%									
		● SURFACE ○ FLUSH									
		○ SURGE ARRESTOR WIRED TO LOAD SIDE OF MAIN, 2 POLE, 175V, JOSLYN Z2-175-OA, OR EQUAL									
		● BLACK FIELD, WHITE LETTERS									
		○ RED FIELD, WHITE LETTERS									
		○ SURGE ARRESTOR WIRED TO LOAD SIDE OF MAIN, 2 POLE, 175V, JOSLYN Z2-175-OA, OR EQUAL									
		● 100% ○ 200%									
		● SURFACE ○ FLUSH									
		○ SURGE ARRESTOR WIRED TO LOAD SIDE OF MAIN, 2 POLE, 175V, JOSLYN Z2-175-OA, OR EQUAL									
		● BLACK FIELD, WHITE LETTERS									
		○ RED FIELD, WHITE LETTERS									
		○ SURGE ARRESTOR WIRED TO LOAD SIDE OF MAIN, 2 POLE, 175V, JOSLYN Z2-175-OA, OR EQUAL									
		● 100% ○ 200%									
		● SURFACE ○ FLUSH									
		○ SURGE ARRESTOR WIRED TO LOAD SIDE OF MAIN, 2 POLE, 175V, JOSLYN Z2-175-OA, OR EQUAL									
		● BLACK FIELD, WHITE LETTERS									
		○ RED FIELD, WHITE LETTERS									
		○ SURGE ARRESTOR WIRED TO LOAD SIDE OF MAIN, 2 POLE, 175V, JOSLYN Z2-175-OA, OR EQUAL									
		● 100% ○ 200%									
		● SURFACE ○ FLUSH									
		○ SURGE ARRESTOR WIRED TO LOAD SIDE OF MAIN, 2 POLE, 175V, JOSLYN Z2-175-OA, OR EQUAL									
		● BLACK FIELD, WHITE LETTERS									
		○ RED FIELD, WHITE LETTERS									
		○ SURGE ARRESTOR WIRED TO LOAD SIDE OF MAIN, 2 POLE, 175V, JOSLYN Z2-175-OA, OR EQUAL									
		● 100% ○ 200%									
		● SURFACE ○ FLUSH									
		○ SURGE ARRESTOR WIRED TO LOAD SIDE OF MAIN, 2 POLE, 175V, JOSLYN Z2-175-OA, OR EQUAL									
		● BLACK FIELD, WHITE LETTERS									
		○ RED FIELD, WHITE LETTERS									
		○ SURGE ARRESTOR WIRED TO LOAD SIDE OF MAIN, 2 POLE, 175V, JOSLYN Z2-175-OA, OR EQUAL									
		● 100% ○ 200%									
		● SURFACE ○ FLUSH									
		○ SURGE ARRESTOR WIRED TO LOAD SIDE OF MAIN, 2 POLE, 175V, JOSLYN Z2-175-OA, OR EQUAL									
		● BLACK FIELD, WHITE LETTERS									
		○ RED FIELD, WHITE LETTERS									
		○ SURGE ARRESTOR WIRED TO LOAD SIDE OF MAIN, 2 POLE, 175V, JOSLYN Z2-175-OA, OR EQUAL									
		● 100% ○ 200%									
		● SURFACE ○ FLUSH									
		○ SURGE ARRESTOR WIRED TO LOAD SIDE OF MAIN, 2 POLE, 175V, JOSLYN Z2-175-OA, OR EQUAL									
		● BLACK FIELD, WHITE LETTERS									
		○ RED FIELD, WHITE LETTERS									
		○ SURGE ARRESTOR WIRED TO LOAD SIDE OF MAIN, 2 POLE, 175V, JOSLYN Z2-175-OA, OR EQUAL									
		● 100% ○ 200%									
		● SURFACE ○ FLUSH									
		○ SURGE ARRESTOR WIRED TO LOAD SIDE OF MAIN, 2 POLE, 175V, JOSLYN Z2-175-OA, OR EQUAL									
		● BLACK FIELD, WHITE LETTERS									
		○ RED FIELD, WHITE LETTERS									
		○ SURGE ARRESTOR WIRED TO LOAD SIDE OF MAIN, 2 POLE, 175V, JOSLYN Z2-175-OA, OR EQUAL									
		● 100% ○ 200%									
		● SURFACE ○ FLUSH									
		○ SURGE ARRESTOR WIRED TO LOAD SIDE OF MAIN, 2 POLE, 175V, JOSLYN Z2-175-OA, OR EQUAL									
		● BLACK FIELD, WHITE LETTERS									
		○ RED FIELD, WHITE LETTERS									
		○ SURGE ARRESTOR WIRED TO LOAD SIDE OF MAIN, 2 POLE, 175V, JOSLYN Z2-175-OA, OR EQUAL									
		● 100% ○ 200%									
		● SURFACE ○ FLUSH									
		○ SURGE ARRESTOR WIRED TO LOAD SIDE OF MAIN, 2 POLE, 175V, JOSLYN Z2-175-OA, OR EQUAL									
		● BLACK FIELD, WHITE LETTERS									
		○ RED FIELD, WHITE LETTERS									
		○ SURGE ARRESTOR WIRED TO LOAD SIDE OF MAIN, 2 POLE, 175V, JOSLYN Z2-175-OA, OR EQUAL									
		● 100% ○ 200%									
		● SURFACE ○ FLUSH									
		○ SURGE ARRESTOR WIRED TO LOAD SIDE OF MAIN, 2 POLE, 175V, JOSLYN Z2-175-OA, OR EQUAL									
		● BLACK FIELD, WHITE LETTERS									