

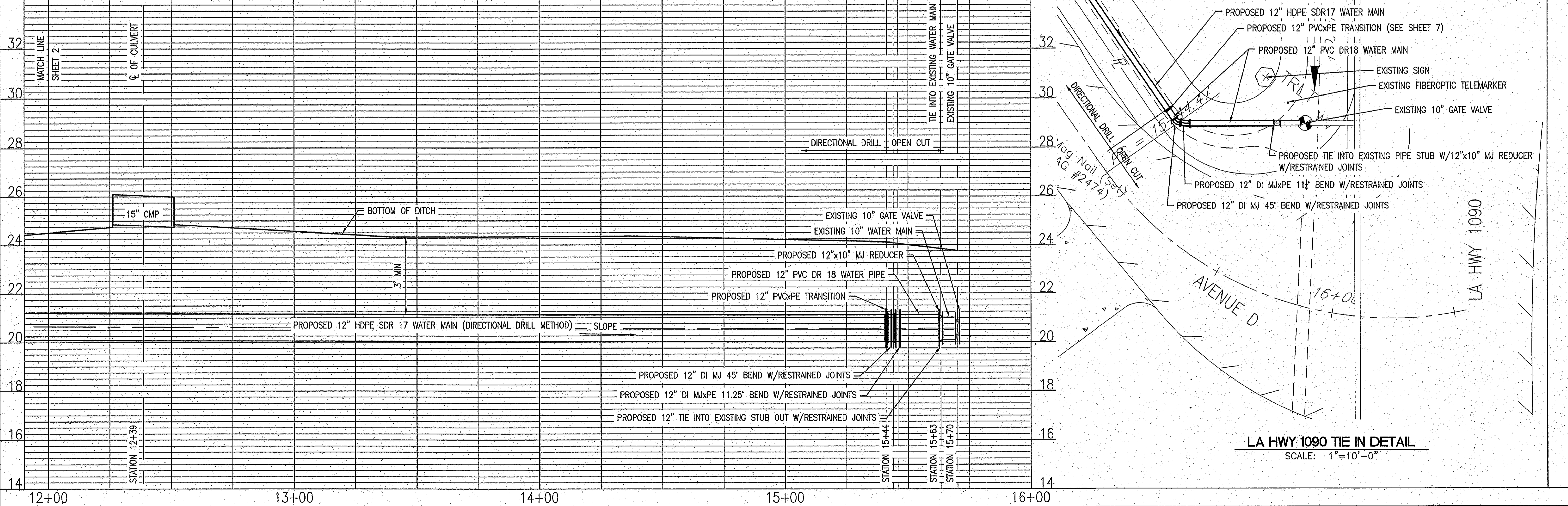
LEGEND

- P.K. NAIL SET
- I.P. FOUND
- ⊕ POWER POLE
- ⊕ GUY ANCHOR
- ⊕ LIGHT POLE
- ⊕ DROP INLET
- ⊕ GAS METER
- OVERHEAD ELECTRIC LINE
- BOTTOM OF DITCH
- - - TOP OF DITCH
- ⊕ EXISTING SEWER MANHOLE
- ⊕ REQUIRED SEWER MANHOLE
- DIRECTION OF FLOW IN SEWER LINE
- ⊕ SIGN
- ⊕ MB MAILBOX
- +4.35 ELEVATION
- ⊕ AIR RELEASE VALVE
- ⊕ DOUBLE SEWER WYE WITH CLEANOUT

CAUTION
ELECTRICAL OVERHEAD AND UNDERGROUND LINES ARE LOCATED ON OR NEAR CONSTRUCTION AREA. CONTRACTOR SHALL TAKE PROPER SAFETY PRECAUTIONS DURING CONSTRUCTION WHEN WORKING AROUND HIGH VOLTAGE LINES. NOT ALL OVERHEAD OR UNDERGROUND LINES MAY BE SHOWN IN THE DRAWINGS. WHEN SHOWN, EXACT LOCATIONS MAY VARY.

SCALES: UNLESS OTHERWISE NOTED
1"=20' HOR.
1"=2' VERT.
SCALE CONVERSION
0 1 2 3 4

FILENAME: \\V:\2011\1120\30\1120-AVENUE D WATER MAIN.dwg TAB:3



LA HWY 1090 TIE IN DETAIL

SCALE: 1"=10'-0"