

GENERAL NOTES

1. PROVIDE ACCESS DOORS TO VALVES THAT ARE NOT READILY ACCESSIBLE.
2. REFER TO RISER DIAGRAMS AND PLUMBING FIXTURE SCHEDULES FOR ALL PIPING AND PIPE SIZES NOT SHOWN ON PLAN.
3. FOR PIPING ROUTED ON EXTERIOR SIDE OF WALL, ROUTE PIPING ON THE INTERIOR SIDE OF INSULATED WALL TO PROVIDE FREEZE PROTECTION.
4. NEUTRALIZATION WALLS ARE SHOWN ON THE INTERIOR SIDE OF THE WALL. NEUTRALIZATION WALL PENETRATION DETAIL SHALL BE INSTALLED IN PREP AREAS. A MINIMUM OF 1" FROM WALL AND 6" ABOVE FINISHED FLOOR TO ALLOW FOR CLEANING.
5. PROVIDE BACKFLOW PREVENTION ON THREADED EQUIPMENT HOSE BIBBS, AND ALL FAUCETS WITH EQUIPMENT HOSE BIBBS. REFER TO PLUMBING FIXTURE SCHEDULE, SPS-015. REFER TO PLUMBING FIXTURE SCHEDULE, SPS-015.
6. PROVIDE ESCUTCHEON PLATES FOR PLUMBING PENETRATIONS THROUGH GROCERY CEILING AND WALLS.

KEYNOTES

- 15.100 ROUTE PIPING THROUGH JOIST SPACE. COORDINATE WITH HVAC AND OTHER TRADES. CONTRACTOR SHALL VERIFY ALL PENETRATIONS PRIOR TO INSTALLATION. CLEARANCES FROM SPRINKLERS.
- 15.101 COORDINATE 3" DOMESTIC WATER SERVICE AND WATER METER WITH AUTHORITY HAVING JURISDICTION AND LOCAL REGULATIONS. SEE SCHEDULES S5 AND S6. REFER TO THE PLUMBING FIXTURE SCHEDULES.
- 15.105 WATER FILTRATION SYSTEM DISPENSING UNIT, FURNISHED BY WAL-MART. LOCATION ALONG WALL.
- 15.106 WATER FILTRATION SYSTEM AND WATER STORAGE TANK, FURNISHED BY CONTRACTOR. INSTALL UNDER COUNTER PER MANUFACTURER'S SPECIFICATIONS.
- 15.107 PROVIDE 1/2" WATER WITH SHUT-OFF VALVES TO PRODUCE CASE CLEANOUT SYSTEM. LOCATE SECONDARY VALVES KICKPLATES.
- 15.109 PROVIDE 3/4" KEY LINE FOR TEMPORARY BYPASS BETWEEN BUILDING WATER SUPPLY LINE AND RO WATER SERVICE LINE. REMOVE BYPASS AFTER STARTUP AND TESTING OF GROCERY EQUIPMENT.
- 15.135 GROCERY HAND SINKS ARE SERVED WITH SEPARATE 1/2" HOT WATER PIPING TO ALTERNATE 1/2" HW PIPE ROUTING IS NECESSARY, DO NOT EXCEED A 12'-0" PIPING RUN FROM THE HW LOOP TO THE SINK ROUGH-IN.

WATER PLAN
AND
DETAILS

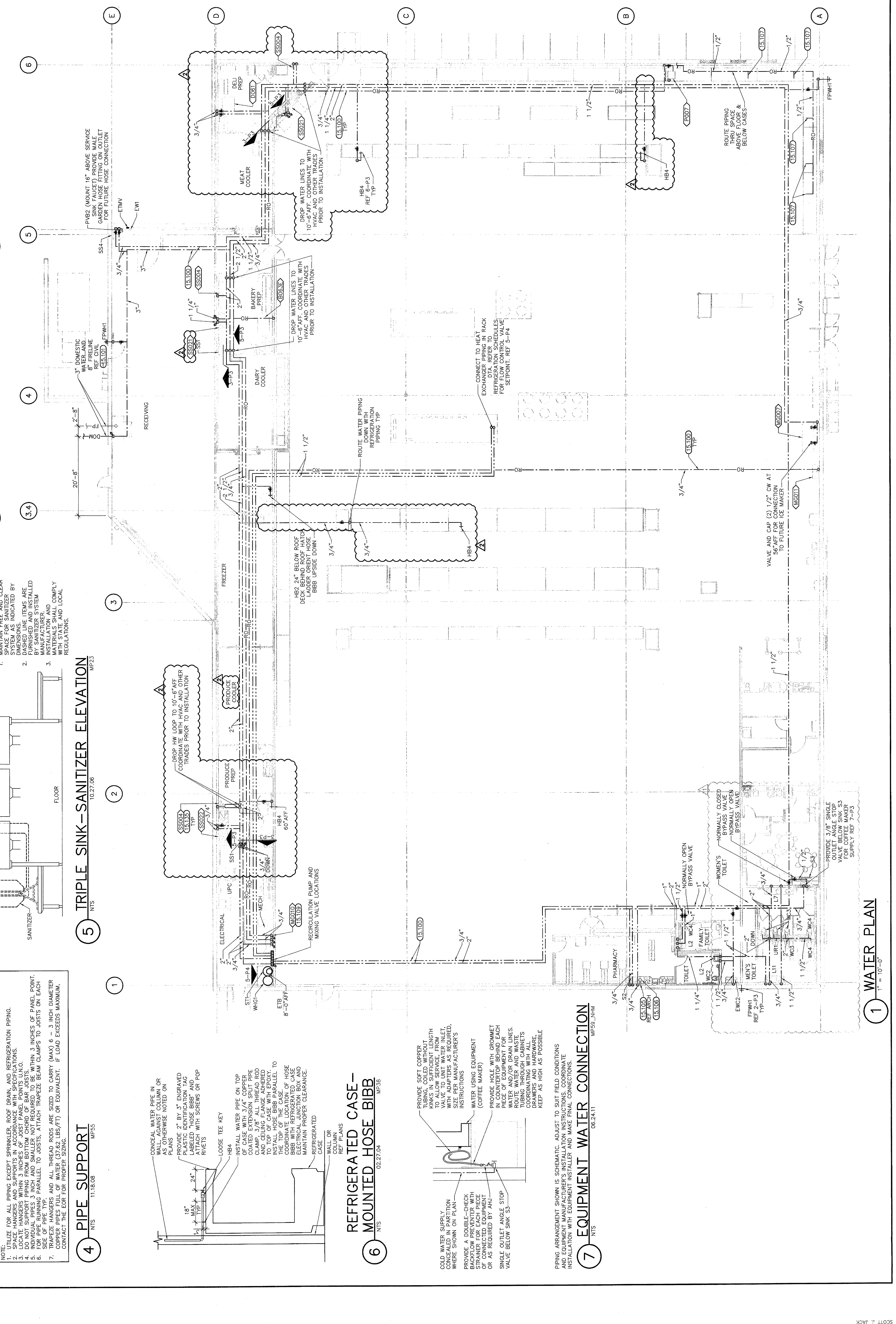
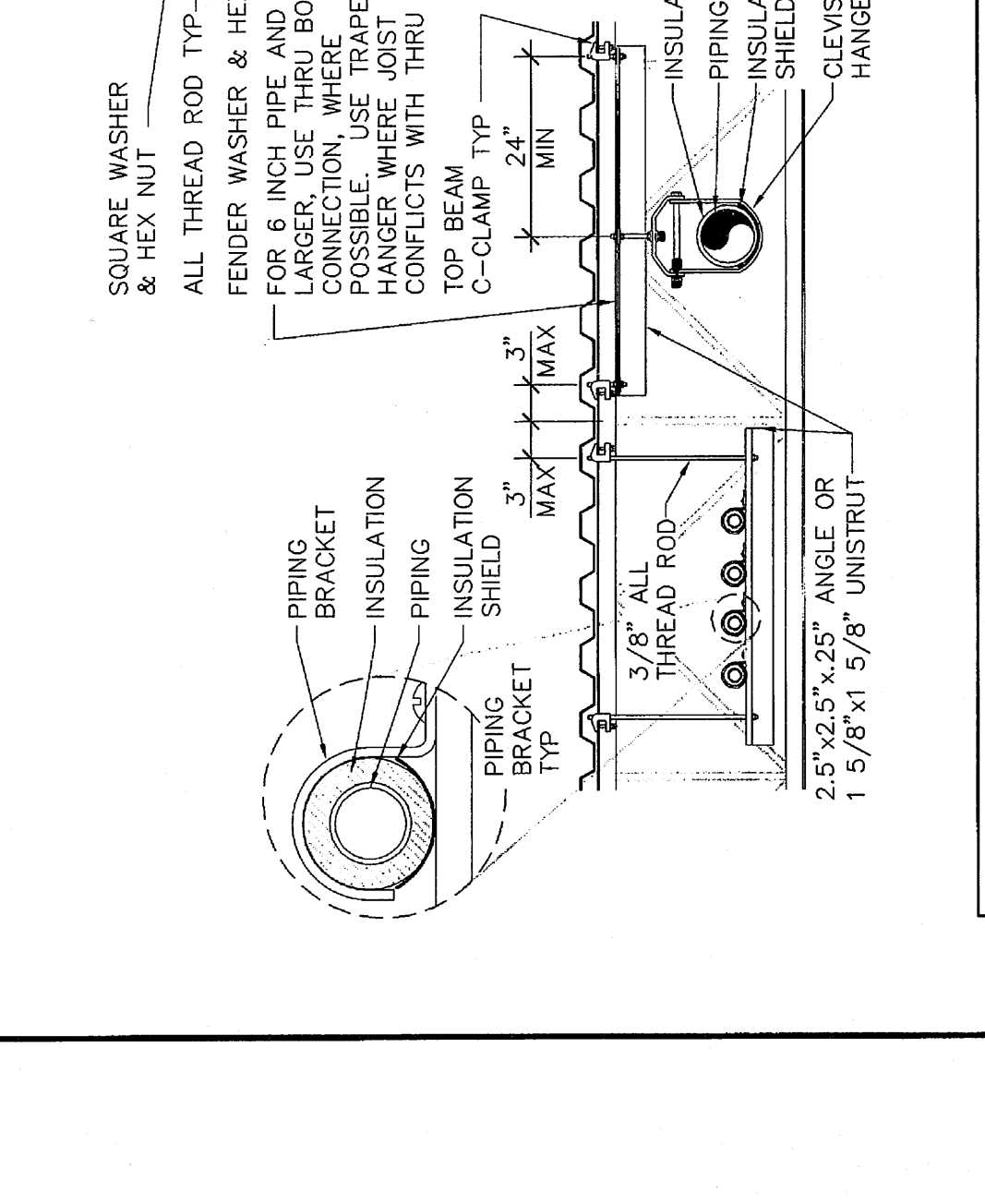
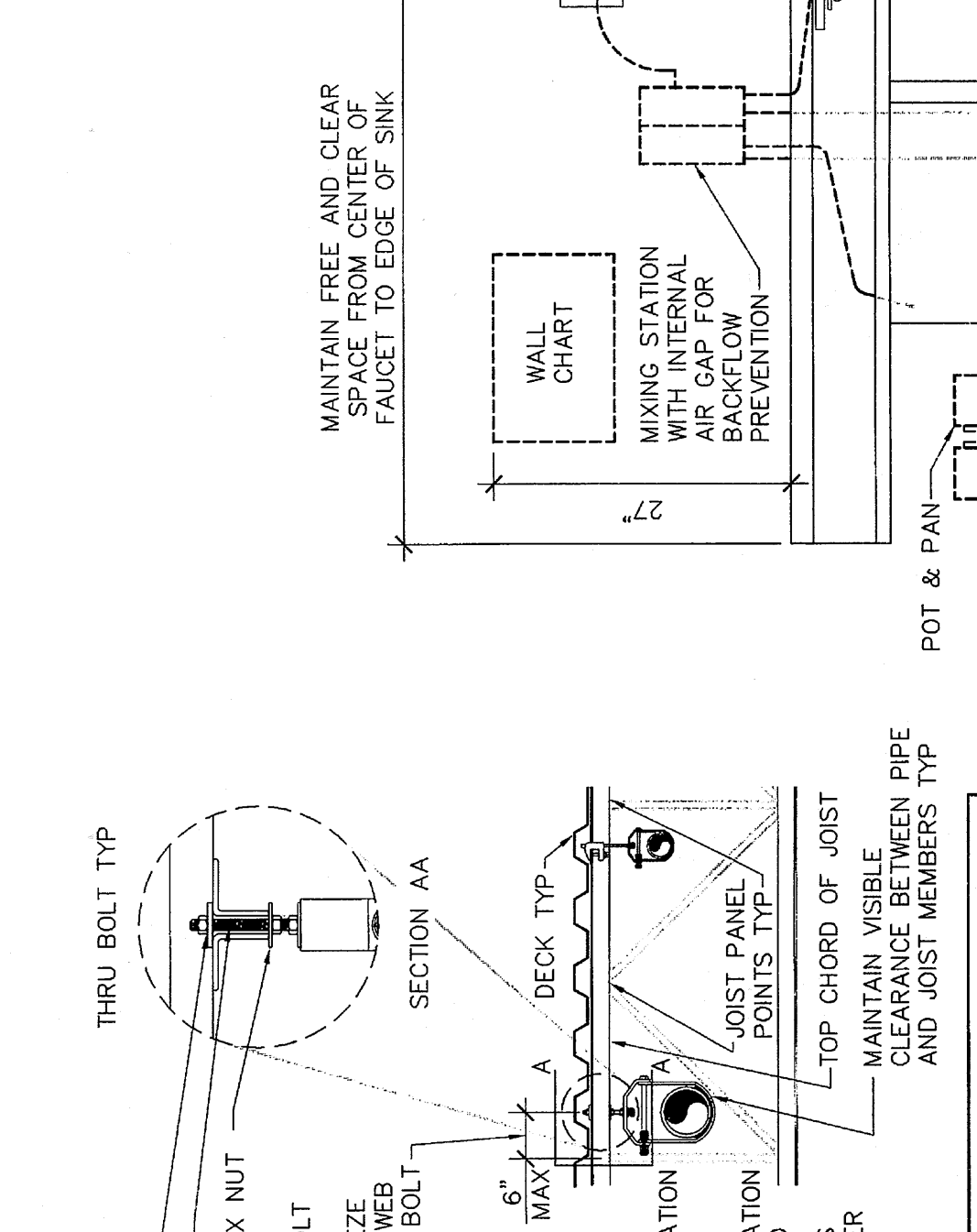
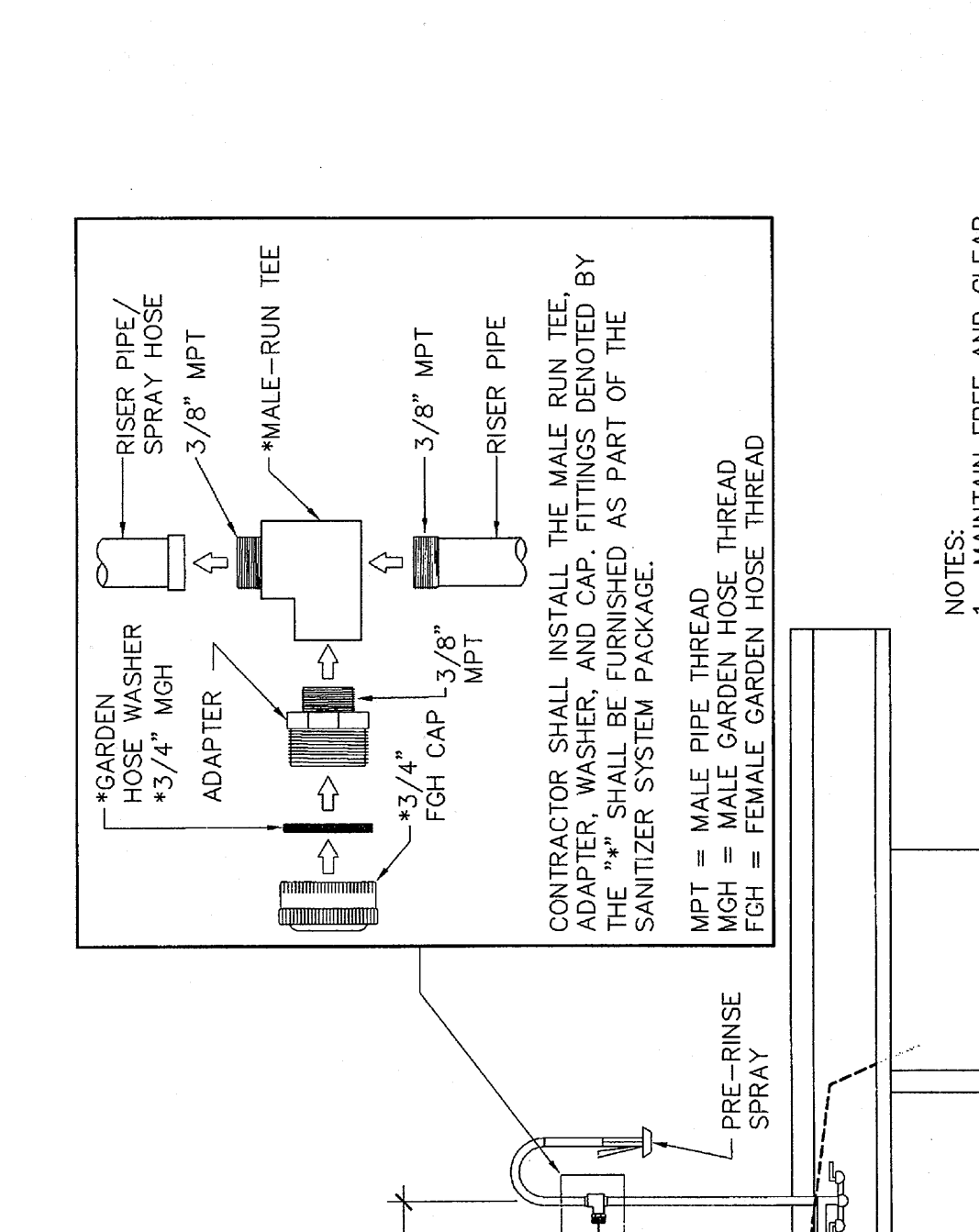
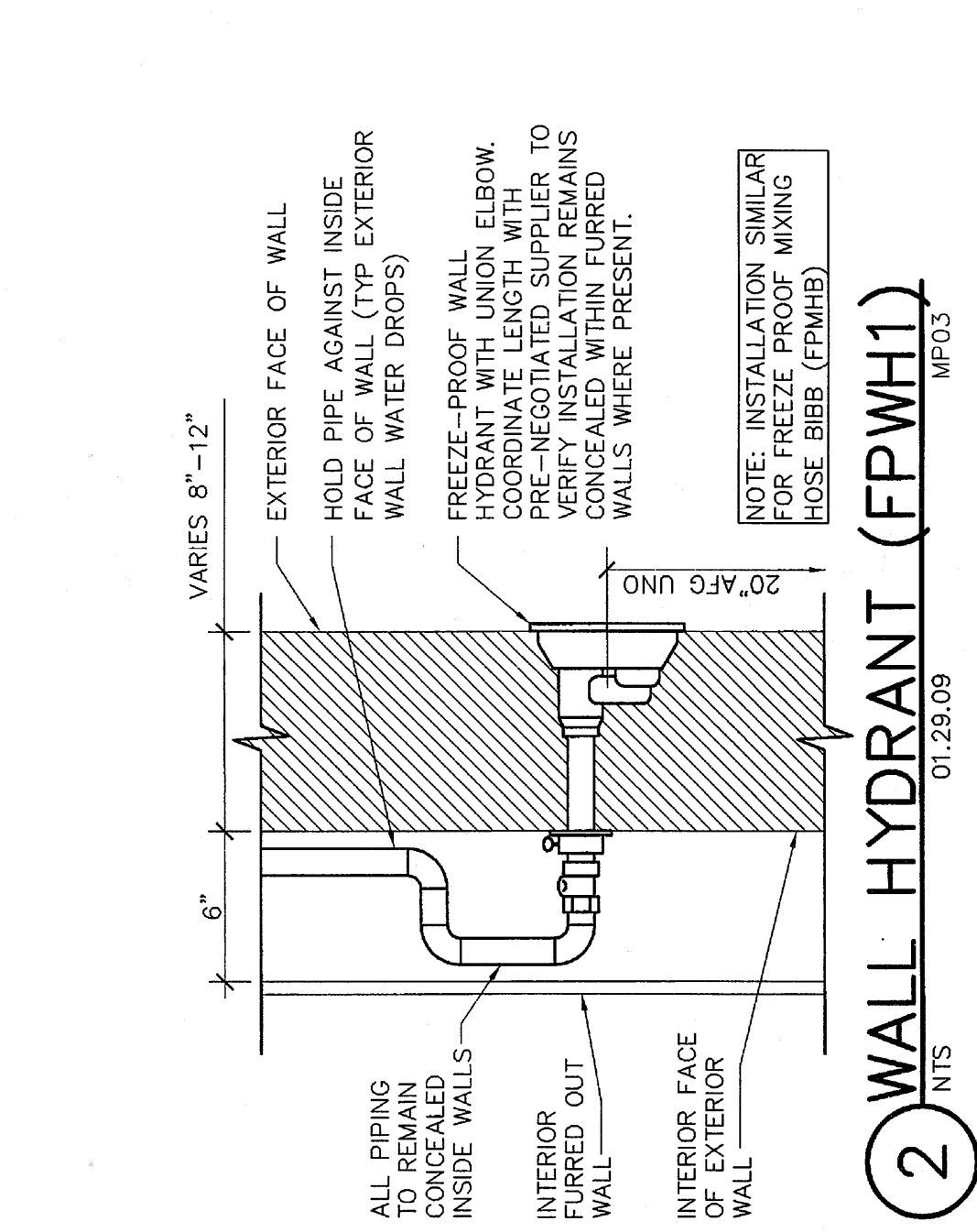
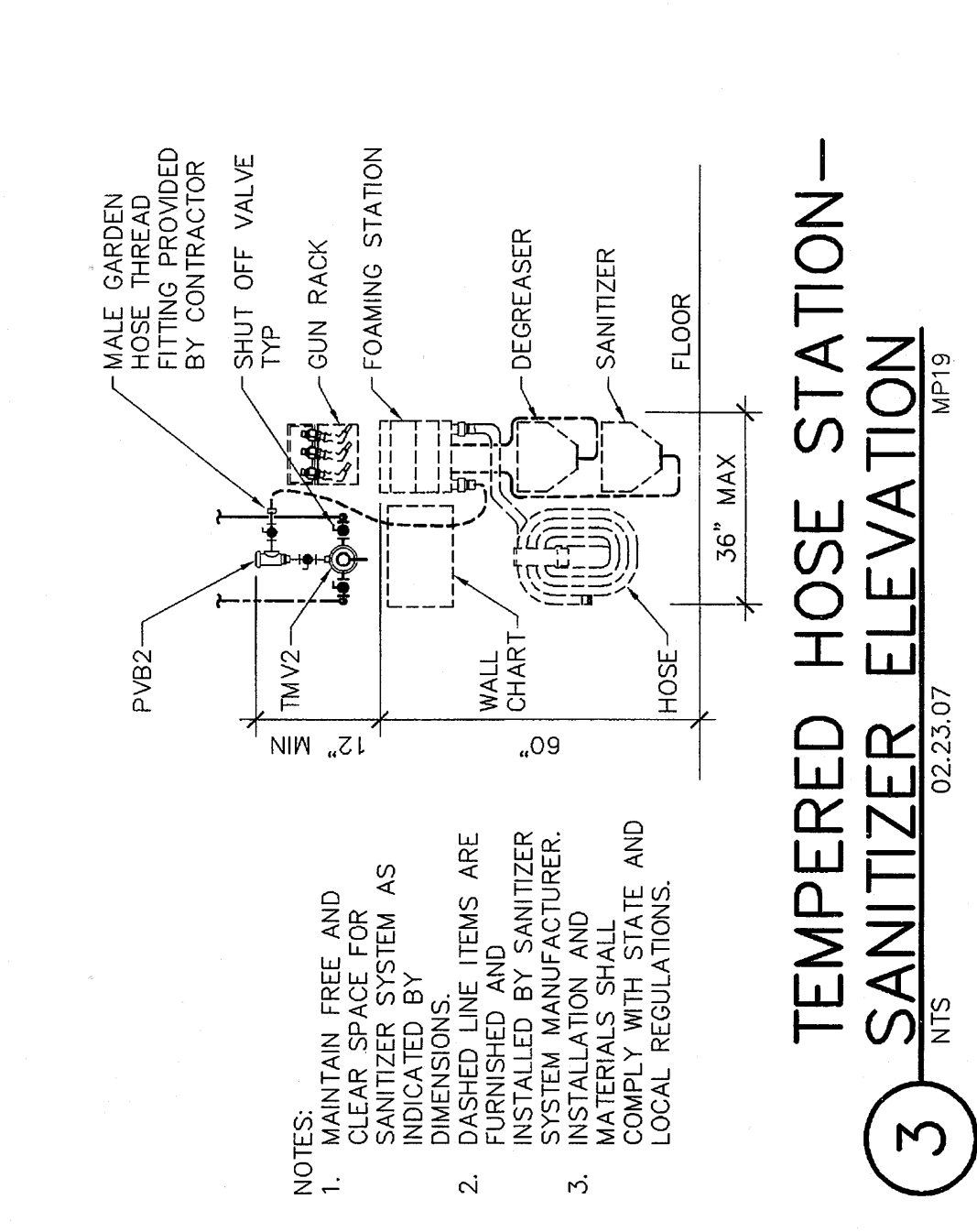
Walmart
Market
COVINGTON, LA
STORE NO. 3042-00
JOB NUMBER: 97120128
PROTO: 41

ISSUE BLOCK
11/17/11 REV. #1
02/09/12 REV. #3

CREATED BY: BLB
DRAWN BY: BLB
FILE NAME: P3
PROJECT CODE: 072911
DOCUMENT DATE: 09/21/11



SHEET: P3



1 TEMPERED HOSE STATION - SANITIZER ELEVATION
MP19
02.23.07

2 WALL HYDRANT (FPWH1)
MP03
01.28.09

3 TRIPLE SINK - SANITIZER ELEVATION
MP23
10.27.08

4 PIPE SUPPORT
MP55
11.18.08

5 REFRIGERATED CASE - MOUNTED HOSE BIBB
MP38
02.27.04

1 WATER PLAN
1" = 10'-0"