

CHALMETTE ELEMENTARY SCHOOL
75 West Chalmette Circle
Chalmette, LA 70043

ST. BERNARD PARISH SCHOOL BOARD

LACHIN ♦ OUBRE & ASSOCIATES, APC
3000 WEST ESPLANADE, SUITE 302
METAIRIE, LOUISIANA 70002

JOB NO: 2805 B

ADDENDUM NO. 1

[REDACTED]

[REDACTED]

LACHIN ♦ OUBRE & Associates
ARCHITECTS, PLANNERS,
PROJECT MANAGERS
A PROFESSIONAL CORPORATION

CHALMETTE ELEMENTARY SCHOOL

Date: April 24, 2009

ADDENDUM NO. 1

This Addendum, applicable to work designated herein below shall be understood to be an Addendum and as such shall be included in the "Contract Documents" dated April 10, 2009.

Following are the changes, amendments, deletions or additions to components of the "Contract Documents" as now written or drawn. All provisions of the General Conditions of the Contract for Construction, Supplementary Conditions, and other pertinent portions of sections in Division 1 through Division 16 of the Project Manual Specification shall apply to this Addendum.

SPECIFICATIONS

- Item No. 1 In the Instructions to Bidders AIA document A701-1997, Paragraph 4.3.1, **delete** the first word "All" and **replace** with the word "Three".
- Item No. 2 In Section 07550-Modified Bitumen Membrane Roofing, **delete** the "Product Substitution Request" form on pages 14 and 15. Substitution request shall be per Section 01631 – Substitutions.
- Item No. 3 In Section 09510 – Acoustical Ceilings (Cementitious Wood Fiber Ceilings), Paragraph 1.01.A, **add** the following after "to be used in":
"Gym, Cafetorium"

DRAWINGS

- Item No. 4 Delete and replace the following sheets attached to this addendum:
S-3.1, S-3.2, S-3.3, S-4.1, S-4.2, S-4.3, S-6.1, S-6.2, S-6.3, S-6.5, S-6.6, S-6.7, S-6.8, S-6.9, S-6.10, S-6.13, S-6.17 and S-6.19.
- Sheet A3.1**
- Item No. 5 On Sheet 3.1, column enclosure U.3 and 14.3 **shall be** 32"x24".
- Item No. 6 On Sheet 3.1, **add** chase along column line 12.3 in room 110 for piping to second floor.
- Item No. 7 On Sheet 3.1, column enclosure U.3 and 30.3 **shall be** similar to detail 74 on Sheet A6.11.
- Item No. 8 The detail bubble at column S.3 and 24.3 **shall read** 74 on Sheet A6.11 similar.
- Item No. 9 The detail bubble at Elevator No. 1 **shall read** 5 on Sheet A7.4.
- Item No. 10 See ASK-6 for enlarged plan of library reference desk.

- Item No. 11 See ASK-7 for enlarged plan of Reception Room 104 counter.
- Item No. 12 See ASK-8 for elevations of casework in Work Room 106.
- Item No. 13 **Change** enlarged plan detail call out at Restroom 113 and Break Room 114 from 4 on Sheet A7.2 to 3 on Sheet A7.2
- Item No. 14 **Change** enlarged plan detail call out at Stair No. 1 from 1 on Sheet A7.4 to 1 on Sheet A7.5.
- Item No. 15 **Add** the note, "Opposite hand to detail bubble 60 on Sheet A6.9 and column line X.3 and 9.6."
- Item No. 16 **Change** enlarged plan detail call out at Stair No. 2 from 3 on Sheet A7.4 to 3 on Sheet A7.5
- Item No. 17 **Change** enlarged plan detail call out at Lounge 149 to 11 on Sheet A7.2.
- Item No. 18 Elevation call out in Work 150 **shall be** 6/A10 looking south and 7/A10 looking east.
- Item No. 19 Shelving detail in Storage 151 and 152 **shall be** 11/A10.
- Item No. 20 Shelving detail in Storage 116, 117, 122, and 123 **shall be** 11/A10.
- Item No. 21 Shelving in closets in Conference 124 **shall be** 11/A10.
- Item No. 22 Elevation of case work in Conference 124 **shall be** 3/A10 looking south.
- Item No. 23 Section cut AM is found on Sheet A6.9.
- Item No. 24 **Change** enlarged plan detail call out at curved wall on front canopy from 2 on Sheet A5.3 to 3 on Sheet A5.3
- Item No. 25 **Add** section cut BD on Sheet A6.14 to wall on column lines K.3, K.3 north of column line 24.3.
- Item No. 26 **Add** section cut BC on Sheet A6.13 to wall on column line 29.3 at column line R.3 looking east.
- Item No. 27 **Add** section cut BB on Sheet A6.13 to wall on column line 29.3 at column line X.3 looking east.
- Item No. 28 **Delete** "Legend" and "Marker and Tackboard Schedule" from the drawing and **add** the following General Notes to Sheets 3.1 thru 3.8:
1. Any partition not specifically identified with a partition tag shall be a full height partition of the material identified in plan and shall extend from the floor slab to the underside of the floor or roof deck above.
 2. See typical classroom elevations for location of marker and tack boards. Additionally, 4'x8' tack boards shall be located in all corridors as follows:
- | <u>Location</u> | <u>Quantity</u> |
|-----------------|-----------------|
| Corridor No. 1 | 8 |
| Corridor No. 2 | 4 |
| Corridor No. 3 | 8 |
| Corridor No. 4 | 4 |
| Corridor No. 5 | 8 |
| Corridor No. 6 | 2 |
| Corridor No. 7 | 2 |

Corridor No. 10 5
Corridor No. 11 8

- Item No. 29 **Change** the Finish Schedule on all sheets as follows:
Key "E" shall be floor (Terrazzo on floorsand rubber on treads and intermediate landing), base (4" resilient), walls (glazed CMU), remarks (terrazzo at floor landings rubber treads and intermediate landing).

Key "D" shall be floor (porcelain tile).
- Item No. 30 For Sheet 3.2, see the attached ASK-9 for elevation of casework in Art 138.
- Item No. 31 **Add** the attached ASK-5 showing column details.
- Sheet A3.2**
Item No. 32 Shelving in Storage 140A **shall be** per detail 11/A10. Shelf depth on south wall shall be 2'-0". Shelf depth on east and west walls shall be 1'-6".
- Item No. 33 **Change** the enlarged plan detail bubble at Stair No. 3 from 1 on Sheet A7.5 to 1 on Sheet A7.6.
- Item No. 34 **Change** the enlarged plan detail bubble at Boys 144 and Girls 145 to 1 on Sheet A7.2.
- Item No. 35 **Change** the section cut bubble AM from Sheet A6.8 to Sheet A6.9.
- Item No. 36 **Add** the attached ASK-14 showing typical duct thru wall penetration.
- Sheet A3.3**
Item No. 37 For Sheet A3.3, see ASK-10 for typical detail of benches.
- Item No. 38 See detail 11/A10 for shelving in Storage 178.
- Item No. 39 Partition between Elec 181 and Boys 180 **shall be** type 4.
- Sheet A3.4**
Item No. 40 See the attached ASK-1 for partition types on this sheet.
- Item No. 41 **Change** the enlarged plan detail bubble at Boys 222 and Girls 223 to 5 on Sheet A7.2.
- Item No. 42 **Change** the enlarged plan detail bubble at Boys 216 and Girls 217 to 6 on Sheet A7.2.
- Item No. 43 **Change** the section cut at column line B.2 between column lines 8.2 and 9.2 from F on Sheet A6.5 to G on Sheet A6.4.
- Item No. 44 **Change** the section cut at column line 9.2 between column lines b.2 and C.2 from J on Sheet A6.3 to J on Sheet A6.4.
- Item No. 45 **Change** the finish key at Corridor 7, 250 from "A" to "B".
- Sheet A3.5**
Item No. 46 **Change** the enlarged plan detail bubble at Concession 253 to 8 on Sheet A7.2.
- Item No. 47 See ASK-11 for interior elevation at Women 257 looking west.
- Item No. 48 See ASK-12 for interior elevation at Boys 264 looking south.

- Item No. 49 **Add** wall section cut 3 on Sheet A6.2 at column line F.5 between column lines 2.5 and 3.5 looking south.
- Item No. 50 **Add** wall section cut 4 on Sheet A6.2 at column line 1.5 between column lines C.5 and D.5 looking east.
- Item No. 51 **Add** wall section cut 5 on Sheet A6.2 at column line B.5 between column lines 3.5 and 4.5 looking south.
- Item No. 52 In multipurpose rooms 265 and 268, **add** smart boards and marker boards to south walls. Provide all data, phone & CATV connections. See elevation 3 on Sheet A8 similar.
- Item No. 53 **Add** the note "motorized telescopic bleachers" to the dashed lines on the east side of Gymnasium 271.
- Item No. 54 **Add** the note "See ASKs-13 & 13B for court layout and striping plan" to the basketball and volleyball courts.
- Item No. 55 **Add** detail call out at column 3.5, F.5 detail shall be 1 on ASK-4.
- Item No. 56 **Add** detail call out at column B.5, 2.5 detail shall be 3 on ASK-4.
- Item No. 57 **Add** detail call out at column E.5, 5.5 detail shall be 2 on ASK-4.
- Item No. 58 **Add** detail call out at column E.5, 7.5 details similar to set 74 on drawings A.6.11.
- Sheet A3.6**
- Item No. 59 See the attached ASK-2 for partition types.
- Item No. 60 **Change** the enlarged plan detail bubble at Stair No. 5 to read "3 on Sheet 7.6".
- Item No. 61 **Change** the enlarged plan detail bubble at Stair Stage left (east side) to read "6 on Sheet A7.6".
- Item No. 62 **Add** an enlarged plan call out at Stair Stage right (west side). This detail shall be 5 on Sheet A7.6.
- Item No. 63 **Change** the wall section tag at column line 6.1 between column lines A.1 and B.1 from y on Sheet A6.7 to T on Sheet A6.6.
- Item No. 64 **Delete** the wall section tag at column line P.1 between column lines 1.1 and 2.1 marked AC on Sheet A6.7
- Item No. 65 **Change** the finish key at Platform 237 from "A" to "L".
- Item No. 66 **Add** the following finish key to the finish schedule:
" 'L' Floor (rubber), Base (4" resilient), Walls (Glazed CMU), Remarks (Install rubber nosing at front of stage)."
- Item No. 67 **Add** the finish key to the following rooms: Mech Room 345 – Finish Key "F"; Elec Room 344 – Finish Key "F".
- Sheet A3.7**
- Item No. 68 See the attached ASK-18 for partition types.

- Item No. 69 **Change** the enlarged plan detail bubble at Stair No. 3 336 from 2 on Sheet A7.5 to 2 on Sheet A7.6.
- Item No. 70 **Change** the enlarged plan detail bubble at Stair No. 2 335 from 4 on Sheet A7.4 to 4 on Sheet A7.5.
- Item No. 71 **Change** the enlarged plan detail bubble at Stair No. 4 333 from 5 on Sheet A7.4 to 5 on Sheet A7.5.
- Item No. 72 **Change** the enlarged plan detail bubble at Stair No. 1 331 from 2 on Sheet A7.4 to 2 on Sheet A7.5.
- Item No. 73 **Change** the enlarged plan detail bubble at Elevator No. 2 to 1 on Sheet A7.4.
- Item No. 74 **Change** the enlarged plan detail bubble at Break Room 305 to 1 on ASK-19 attached to this addendum.
- Item No. 75 **Change** the enlarged plan detail bubble at Elevator No. 1 to 2 on Sheet A7.4.
- Item No. 76 **Change** the column detail bubble at column 3.3 and M.3 to read detail 56A on Sheet A6.9 taken from Sheet A3.7.
- Item No. 77 **Change** the wall detail bubble at column M.3 between columns 3.3 and 4.3 to read detail 83 on Sheet A6.12 taken from Sheet A3.7.
- Item No. 78 **Change** the column detail bubble at column Y.3 and 18.3 to read detail 56A on Sheet A6.9 taken from Sheet A3.7.
- Item No. 79 **Add** enlarged plan detail bubble to reception desk. Detail bubble shall read 1 on ASK-20.
- Item no. 80 See the attached ASK-22 for changes to the plan at Lobby 330.
- Item No. 81 See the attached ASKs-23, 23A, and 23B for elevation and details of casework on the south wall of Auditorium 301.
- Item No. 82 See the attached detail 4 on ASK-4 for column detail at 18.3 and S.3.
- Item No. 83 Detail at COL 13.3, 5.3 similar to detail 15 on A-6.4.
- Sheet A3.8**
- Item No. 84 **Change** the enlarged plan detail bubble at Elevator No. 1 to read 3 on Sheet A7.4.
- Item no. 85 **Change** the enlarged plan detail bubble at Stair No. 4 from 6 on Sheet A7.4 to 6 on Sheet A7.5.
- Sheet A4**
- Item No. 86 **Add** Key Note 3 to all 2x2 corridor ceilings except at corridor ceiling in Administration.
- Item No. 87 **Add** Key Note 1 to all other 2x2 ceilings.
- Item No. 88 **Add** Key Note 4 to all other interior ceilings.
- Item No. 89 **Add** Key Note 5 to exterior ceilings and soffits at front entry canopy.
- Item No. 90 See the attached ASK-24 for typical ceiling transitions details.

Item No. 91 **Delete** Key Note Nos. 7, 8, and 9.

Sheet A4.1

Item No. 92 **Add** Key Note 3 to all 2x2 corridor ceilings.

Item No. 93 **Add** Key Note 1 to all other 2x2 ceilings.

Item No. 94 **Add** Key Note 4 to all other interior ceilings.

Item No. 95 **Delete** Key Notes 7, 8, and 9.

Sheet A4.2

Item No. 96 **Add** Key Note 3 to all 2x2 corridor ceilings.

Item No. 97 **Add** Key Note 1 to all other 2x2 ceilings.

Item No. 98 **Add** Key Note 4 to all other interior ceilings.

Item No. 99 **Delete** Key Notes 7, 8, and 9

Sheet A4.3

Item No. 100 **Add** Key Note 3 to all 2x2 corridor ceilings.

Item No. 101 **Add** Key Note 1 to all other 2x2 ceilings.

Item No. 102 **Add** Key Note 4 to all other interior ceilings.

Item No. 103 **Delete** Key Notes 7, 8, and 9.

Sheet A4.4

Item No. 104 **Add** Key note 3 to all 2x2 ceilings in the Gymnasium 271 and Gym Lobby 251.

Item No. 105 **Add** Key Note 1 to all other 2x2 ceilings.

Item No. 106 **Add** Key Note 4 to all other interior ceilings.

Item No. 107 **Add** Key Note 5 to all exterior ceilings and soffits unless indicated to be metal.

Item No. 108 **Delete** Key Notes 7, 8, and 9.

Sheet A4.5

Item No. 109 **Add** Key Note 3 to all 2x2 corridor ceilings and 2x2 ceiling in Cafetorium 236.

Item No. 110 **Change** ceiling in Kitchen 240, Dish Wash 241, Dietitian 242, Janitor 243, Dry Storage 245 and Toilet 246 to 2x2 lay-in Key Note 2.

Item No. 111 **Add** Key Note 5 to all exterior ceilings.

Item No. 112 **Add** Key Note 6 to covered walk on west side of building.

Item No. 113 **Add** Key Note 4 and ceiling height of 10'-0" to furred down ceiling at perimeter of Cafetorium except height shall be 13'-4" at front of platform.

Item No. 114 **Add** Key Note 1 to 2x2 ceiling at Table Storage 235.

Item No. 115 **Delete** Key Notes 7, 8, and 9.

Sheet A4.6

Item No. 116 **Add** Key Note 3 to all 2x2 corridor ceilings, Lobby ceilings, and Auditorium ceilings.

Item No. 117 **Add** Key Note 4 to 10'-0" furred down ceiling at perimeter of Auditorium.

Item No. 118 **Add** Key Note 1 to all other 2x2 ceilings.

Item No. 119 **Add** Key Note 4 to all other interior ceilings.

Item No. 120 **Delete** Key Notes 7, 8, and 9.

Sheet A6.10

Item No. 121 **Add** to section AS, two C 6"x8.3 channels running 5'-0" length with equal spaces.

Item No. 122 **Add** at detail 70, size of channels C 8"x13.75, includes four sides.

Item No. 123 **Add** to details 68 and 69, size of continuous bent plate 8"x2 3/8"x3/8" weld to beam.

Sheet A6.14

Item No. 124 **Add** to coded note 60, provide continuous 1 3/4" deep by 16 gauge framing section at 48" on center.

Sheet A7.1

Item No. 125 Detail 2 at Girls 179 wrap column A.4, 4.4 with 4" glazed CMU.

Sheet A7.2

Item No. 126 Detail 5 at Girls 223 wrap column K.2, 1.2 with 4" glazed CMU.

Item No. 127 Detail 6 at Girls 217 wrap column K.2, 4.2 with 4" glazed CMU.

Sheet A7.3

Item No. 128 Detail 2 at Girls 320 wrap column M.3, 5.3 with 4" glazed CMU. Provide toilet partition at HC stall to match the one at Girls 223.

GENERAL

Item No. 129 ASKs 15, 16, 17, and 21 are not included in this addendum. These ASKs will be included in Addendum No. 2.

END OF ADDENDUM NO. 1

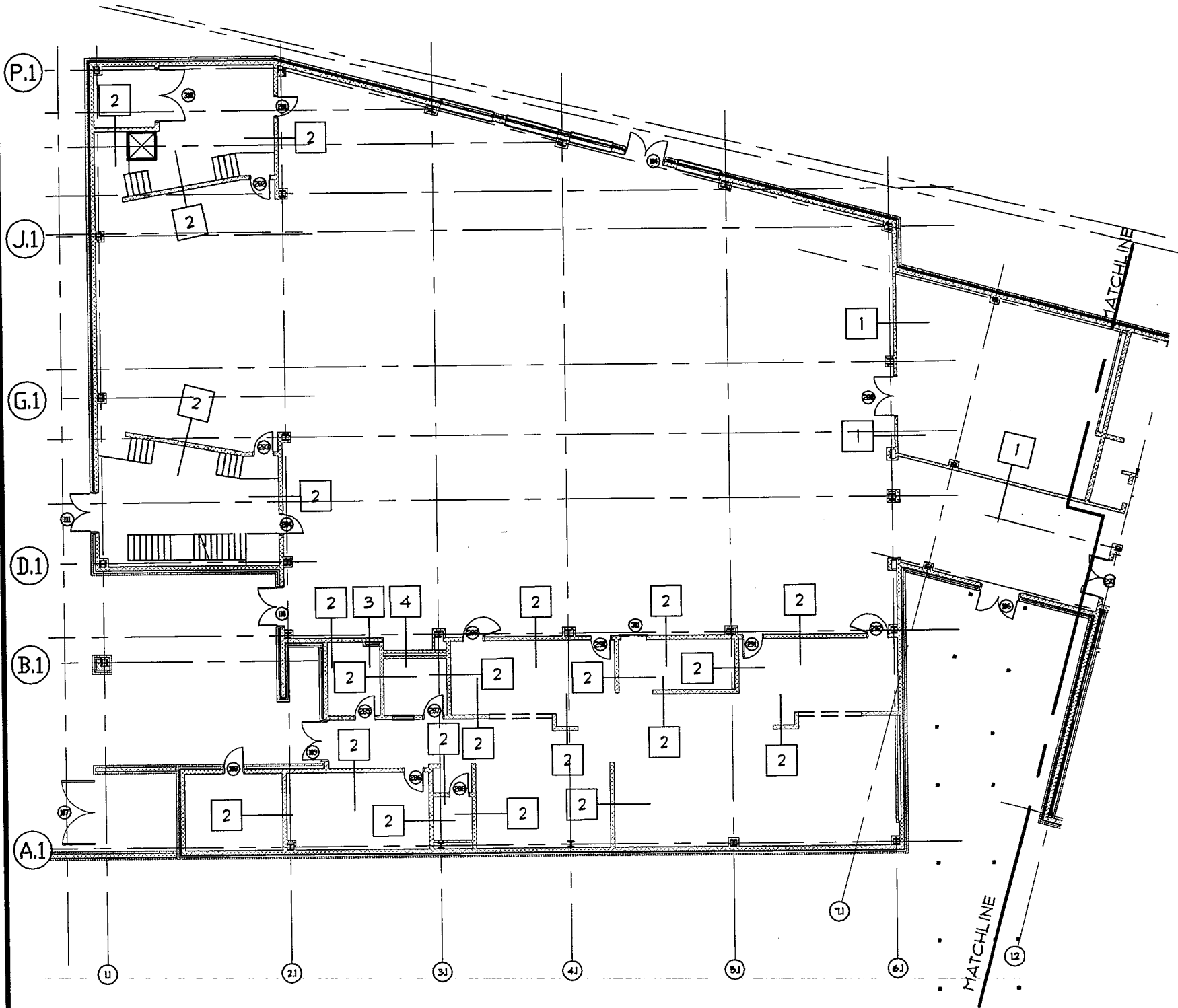


FIRST FLOOR PLAN - BUILDING 2

A3.4 ASK-1 SCALE: N.T.S.

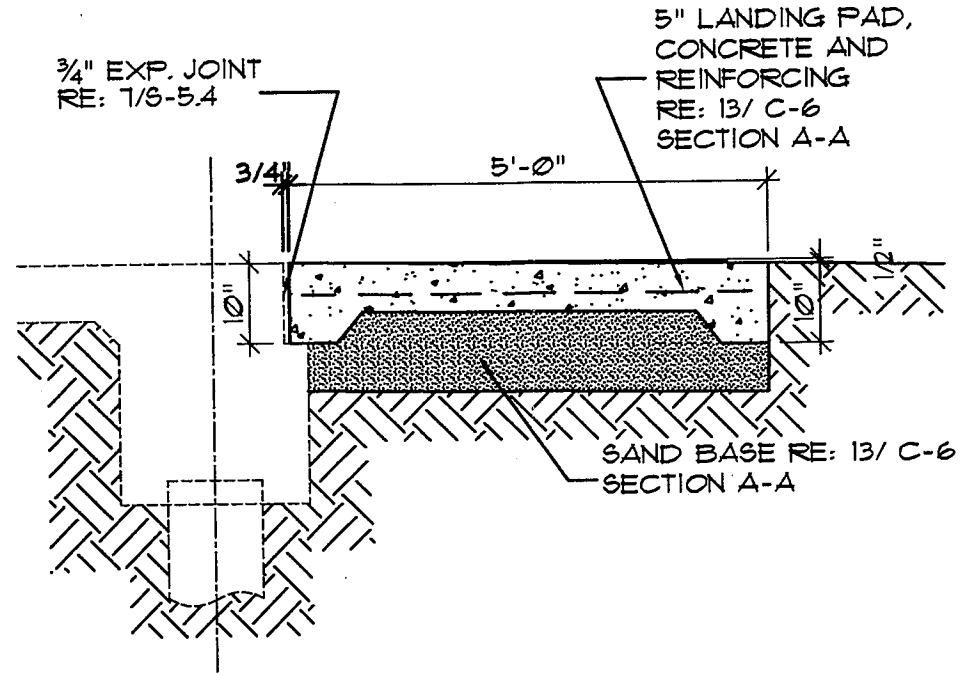
NORTH

DATE: 04/24/2009		SCALE: AS NOTED		DRAWN: BHT		JOB: 2805B	
ST. BERNARD PARISH SCHOOL BOARD CHALMETTE ELEMENTARY SCHOOL 78 WEST CHALMETTE BOULE CHALMETTE, LOUISIANA				LACHIN OUBRE' & ASSOCIATES A Professional Architectural Corporation 9000 W. Esplanade Ave. Metairie, Louisiana 70002			
DRAWING TITLE: BUILDING 2 FLOOR PLAN				SHEET No. ASK-1			



NOTE: LANDING PAD SIZE VARIES:
 * SINGLE DOORS
 * 114, 115, 116, 117, 118, 119, 120, 121, 122, 125, 128, 134
 (SIZE = 5'-0" X 5'-0")

* DOUBLE DOORS * 104, 111, 112, 113, 126, 127, 129, 133
 (SIZE IS 8'-0" X 5'-0")



2 CONCRETE LANDING PAD
 ASK-2/ASK-2 SCALE: 1/2" = 1'-0"

1
 A3.6 ASK-2 SCALE: N.T.S.

FIRST FLOOR PLAN - BUILDING 1



ASK-2

SHEET No.

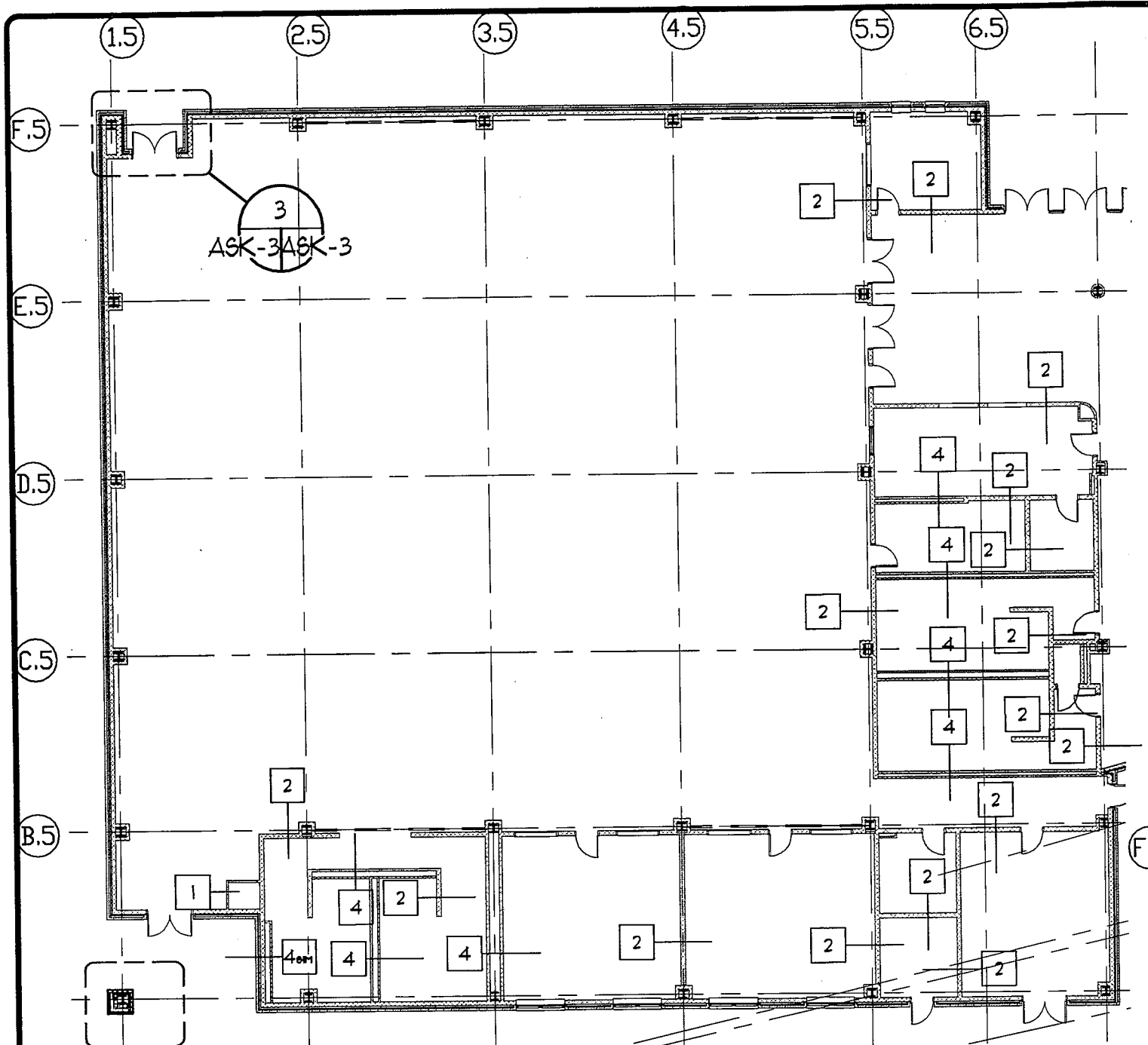
BUILDING 1 FLOOR PLAN

DRAWING TITLE

ST. BERNARD PARISH SCHOOL BOARD
CHALMETTE ELEMENTARY SCHOOL
 78 WEST CHALMETTE CIRCLE
 CHALMETTE, LOUISIANA

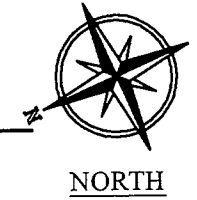
LACHIN OUBRE' & ASSOCIATES
 A Professional Architectural Corporation
 8000 W. Esplanade Ave.
 Metairie, Louisiana 70002
 846 802

DATE	04/24/2009	SCALE	AS NOTED
DRAWN	BHT	JOB	2805B



FIRST FLOOR PLAN - BUILDING 5

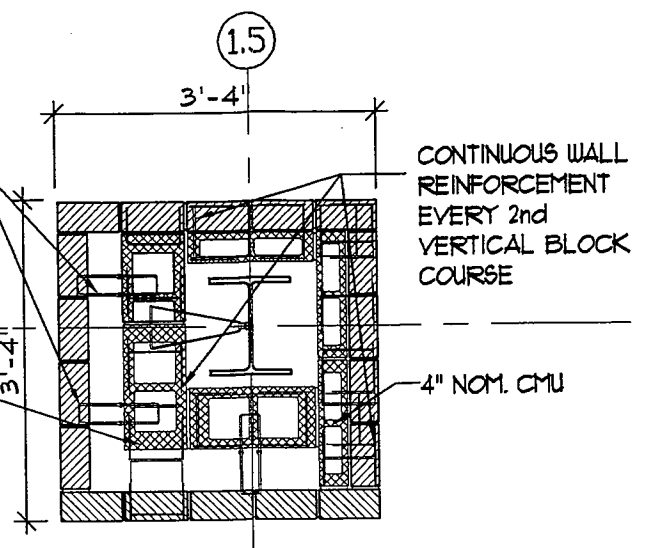
ASK-3ASK-3 SCALE: N.T.S.



ADJUSTABLE BRICK TIES @ 16" O.C. VERTICALLY AND 16" O.C. HORIZONTALLY

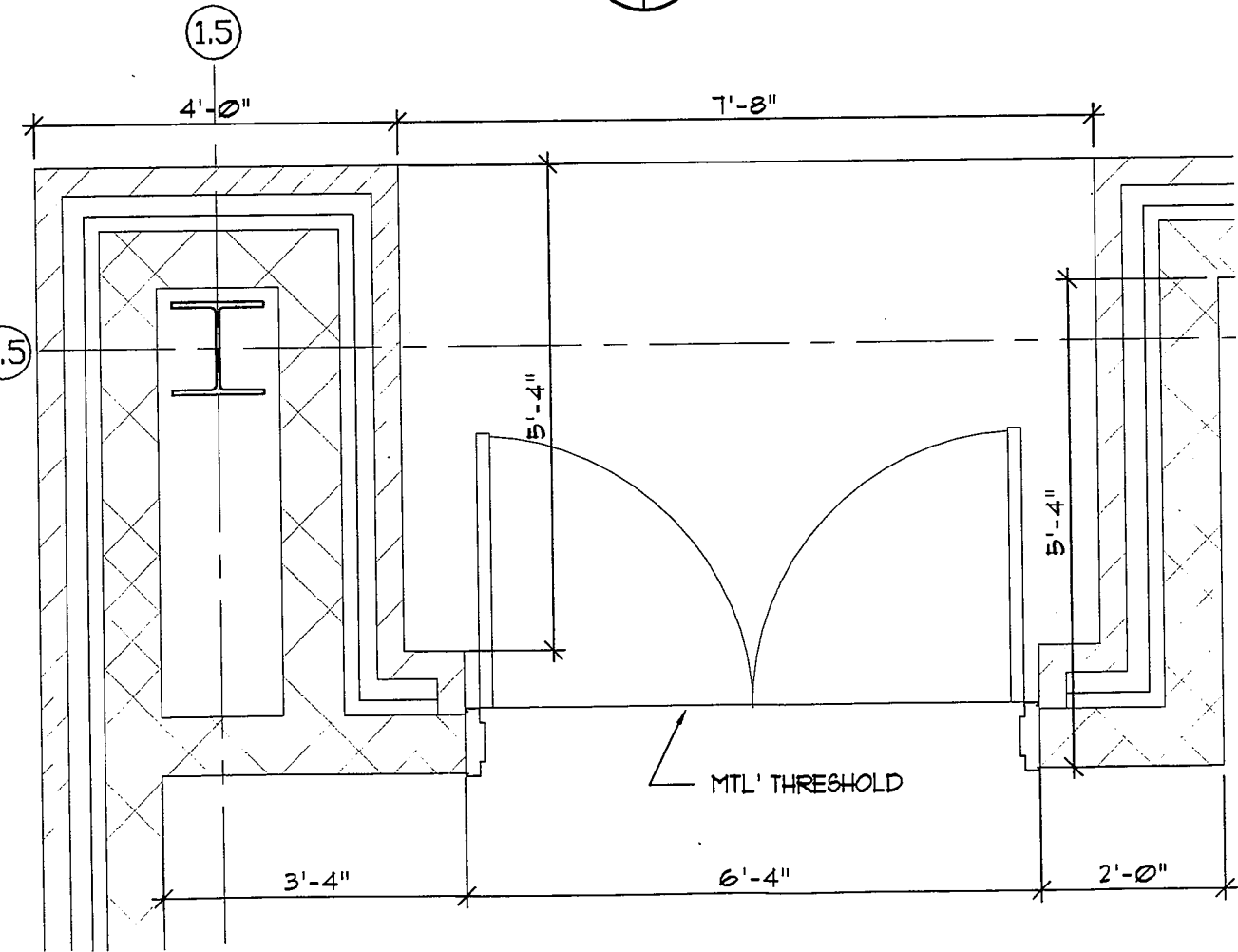
A.5

8" NOM. CMU



COLUMN DETAIL

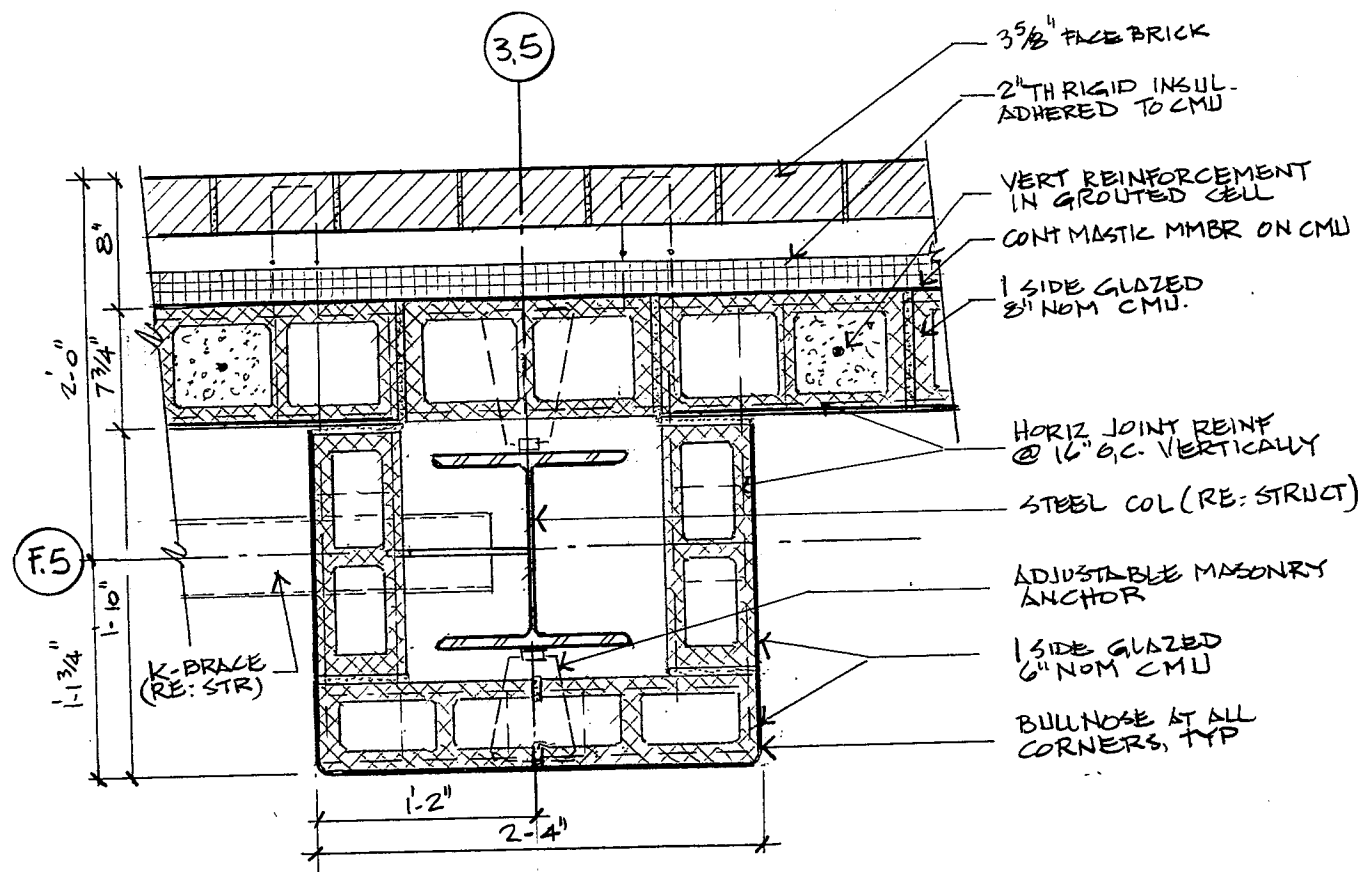
ASK-3ASK-3 SCALE: 1/2"=1'-0"



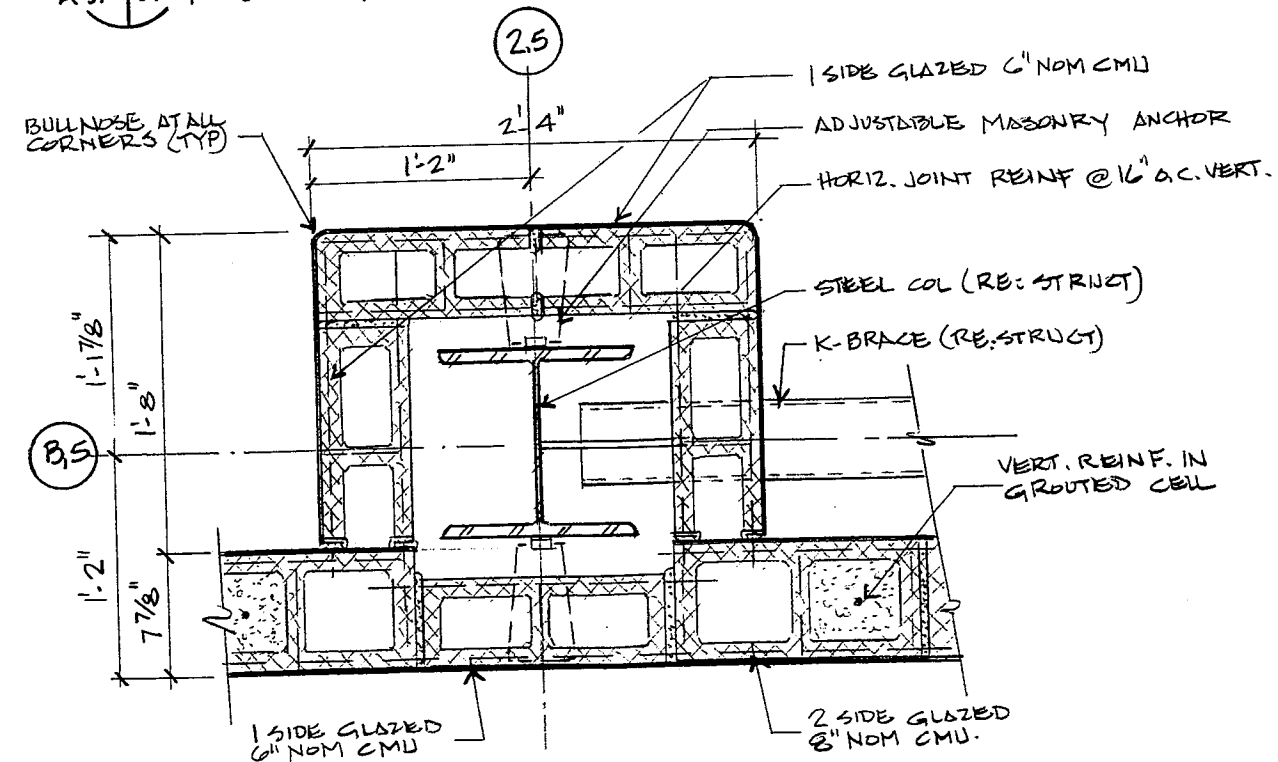
COLUMN DETAIL

ASK-3ASK-3 SCALE: 1/2"=1'-0"

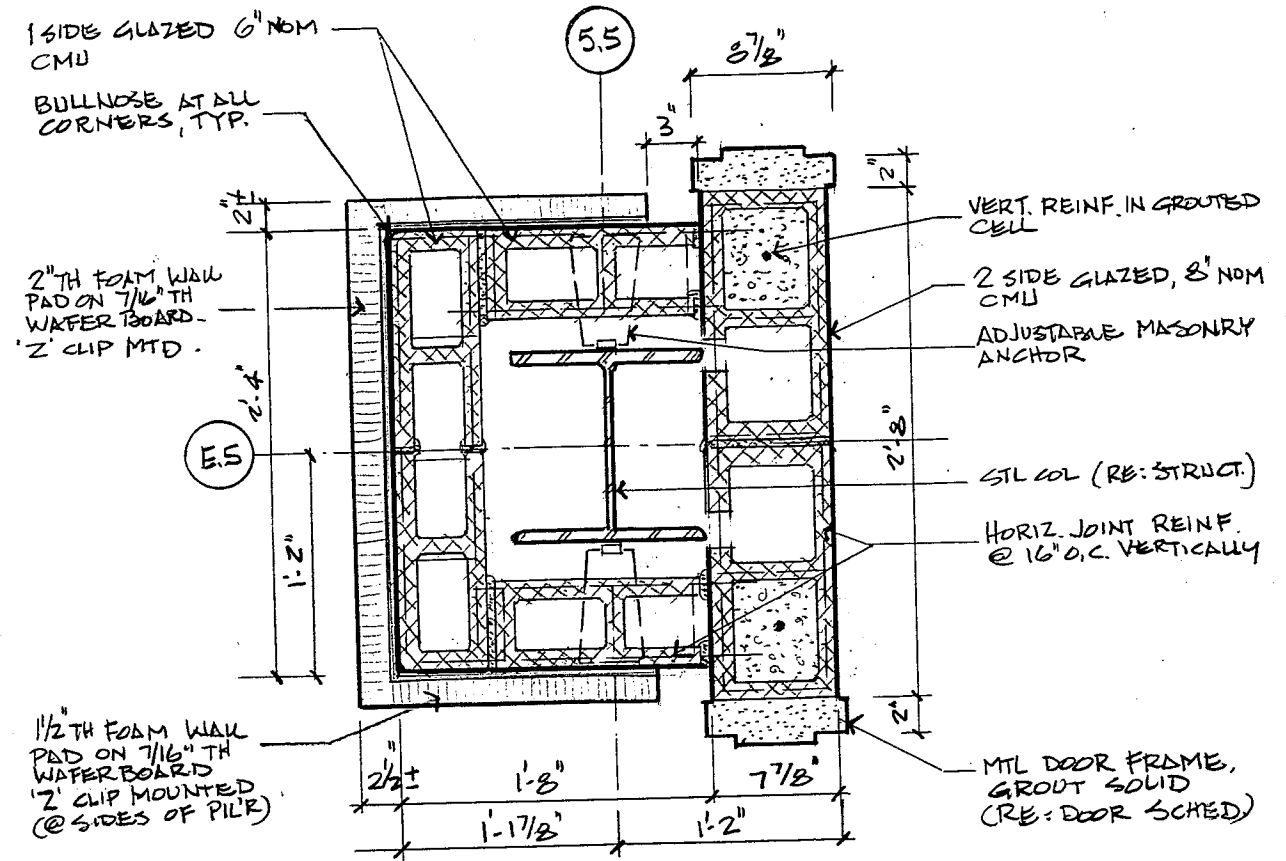
SHEET No.		ASK-3	
DRAWING TITLE			
BUILDING 5 FLOOR PLAN			
DATE		04/24/2009	
SCALE		AS NOTED	
DRAWN		WH/BHT	
JOB		2805B	
ST. BERNARD PARISH SCHOOL BOARD			
CHALMETTE ELEMENTARY SCHOOL			
78 WEST CHALMETTE CIRCLE CHALMETTE, LOUISIANA			
LACHIN OUBRE & ASSOCIATES			
A Professional Architectural Corporation 8000 W. Esplanade Ave. Metairie, Louisiana 70002 848-802			



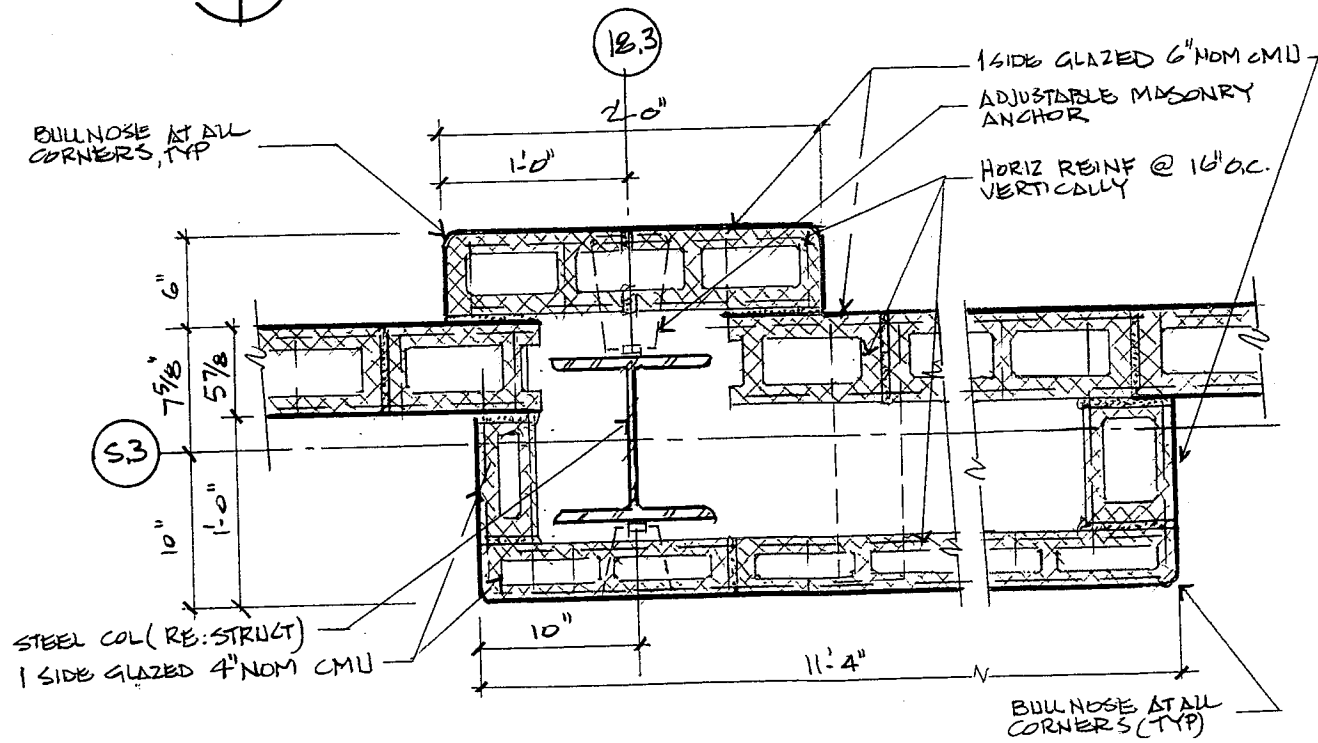
1 COLUMN DETAIL
A-3.5/SK-4 SCALE: 1" = 1'-0"



3 COLUMN DETAIL
A-3.5/SK-4 SCALE: 1" = 1'-0"



2 COLUMN DETAIL
A-3.5/SK-4 SCALE: 1" = 1'-0"



4 COLUMN DETAIL
A-3.7/SK-4 SCALE: 1" = 1'-0"

SHEET No.

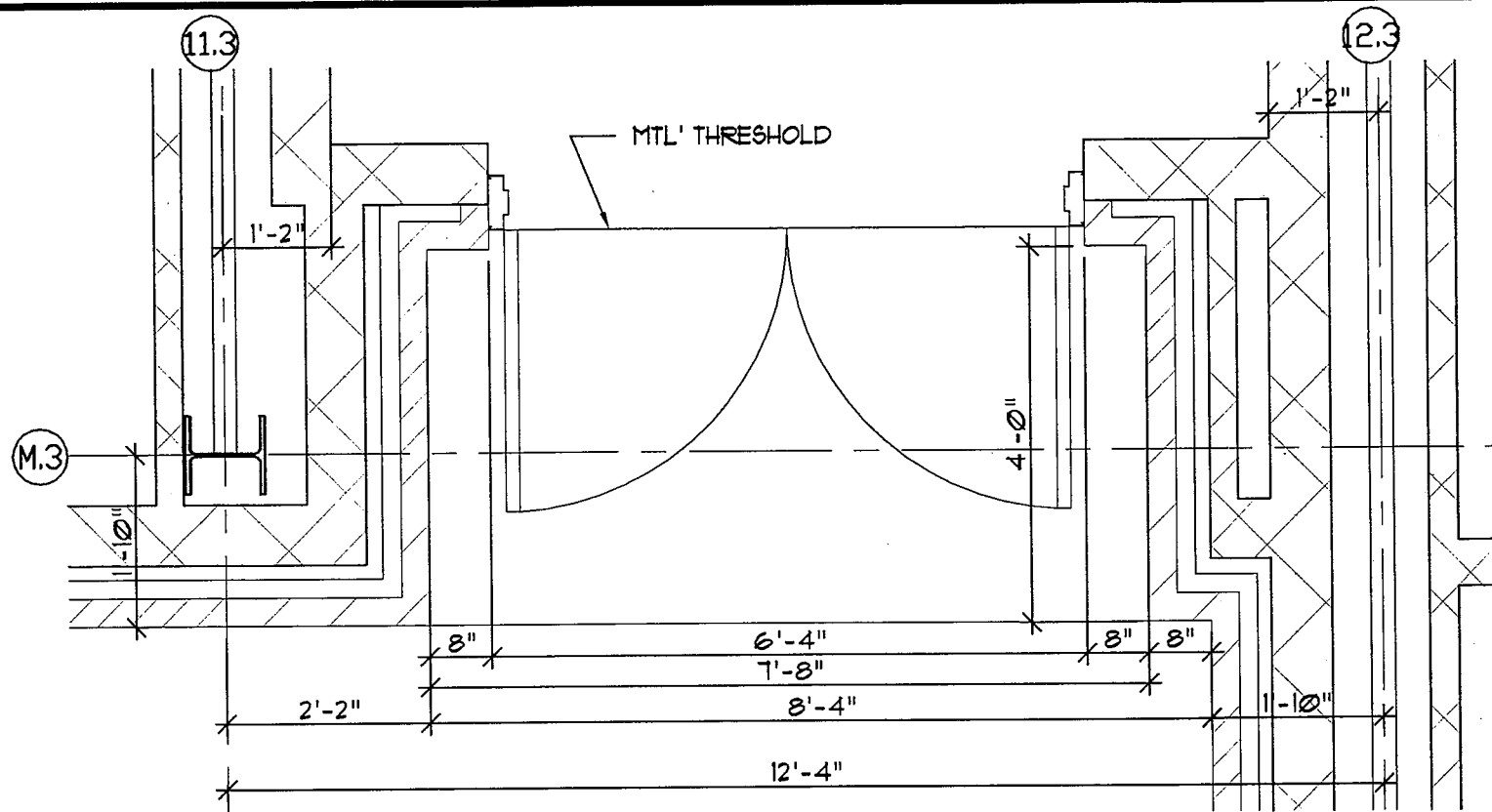
ASK-4

DRAWING TITLE
COLUMN DETAILS

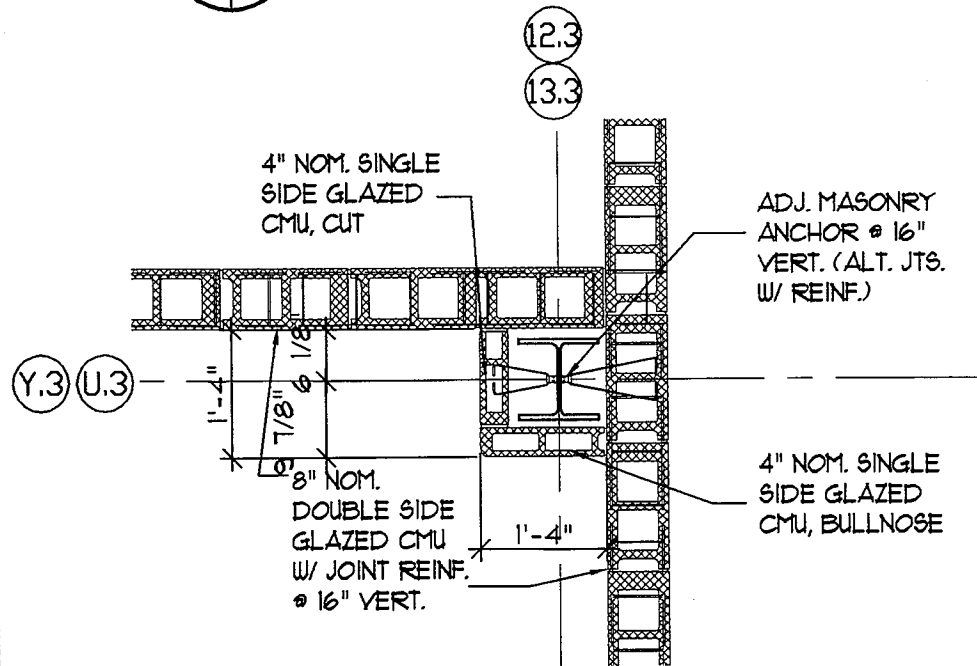
ST. BERNARD PARISH SCHOOL BOARD
CHALMETTE ELEMENTARY SCHOOL
78 WEST CHALMETTE OFFICE
CHALMETTE, LOUISIANA

LACHIN OUBRE' & ASSOCIATES
A Professional Architectural Corporation
8000 W. Esplanade Ave.
Metairie, Louisiana 70002

DATE 04.24.09
SCALE AS NOTED
DRAWN WJH
JOB 2805B



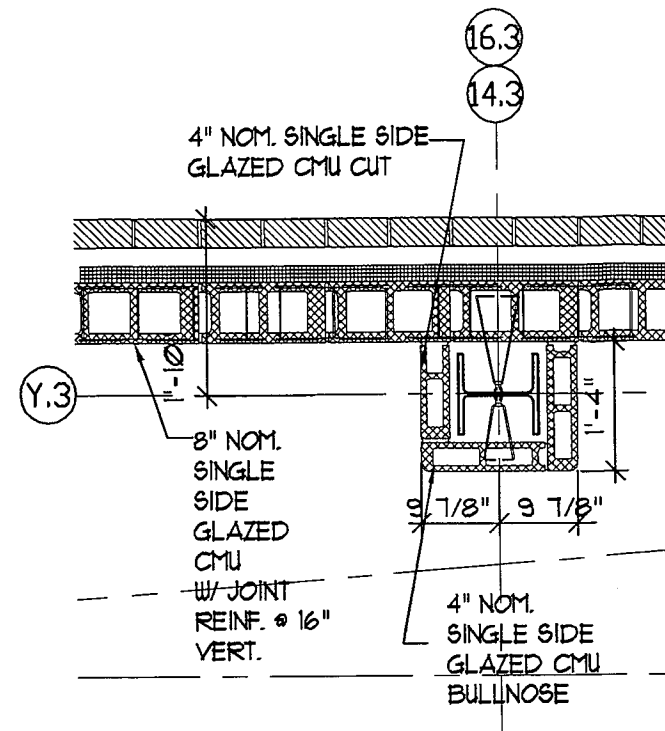
1
DETAIL
 A-3.1 ASK-5 SCALE: 1/2"=1'-0"



COLUMN DETAIL

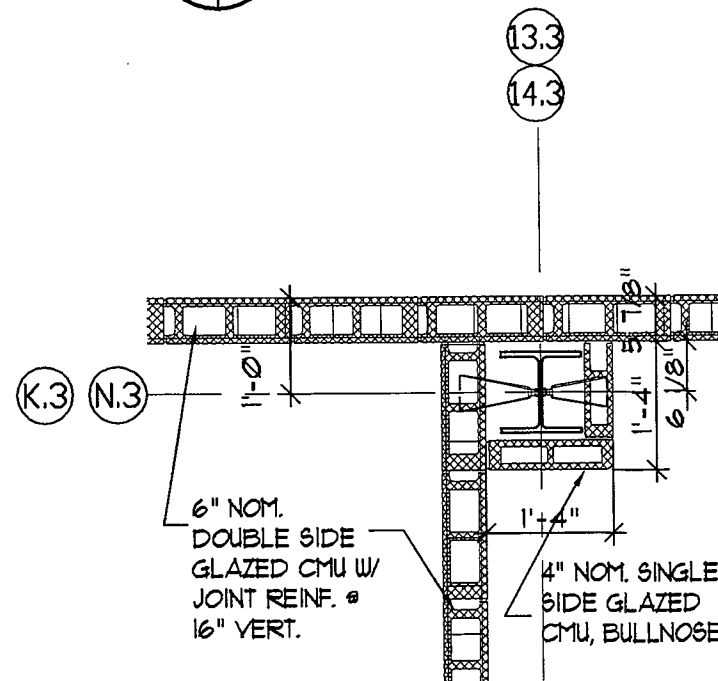
@ U.3-13.3 AND Y.3-13.3
 @ S.3-12.3(SIM.) AND S.3-13.3(SIM.)
 @ U.3-12.3(SIM.)

3
 ASK-3|ASK-5 SCALE: 1/2"=1'-0"



COLUMN DETAIL

2
 @ Y.3-16.3 AND Y.3-14.3
 ASK-3|ASK-5 SCALE: 1/2"=1'-0"



COLUMN DETAIL

@ N.3-14.3 AND N.3-13.3
 @ K.3-14.3(SIM.) AND K.3-13.3(SIM.)

4
 ASK-3|ASK-5 SCALE: 1/2"=1'-0"

ASK-5

**BUILDING 3
 COLUMN DETAILS**

ST. BERNARD PARISH SCHOOL BOARD
CHALMETTE ELEMENTARY SCHOOL
78 WEST CHALMETTE BOULEVARD
 CHALMETTE, LOUISIANA

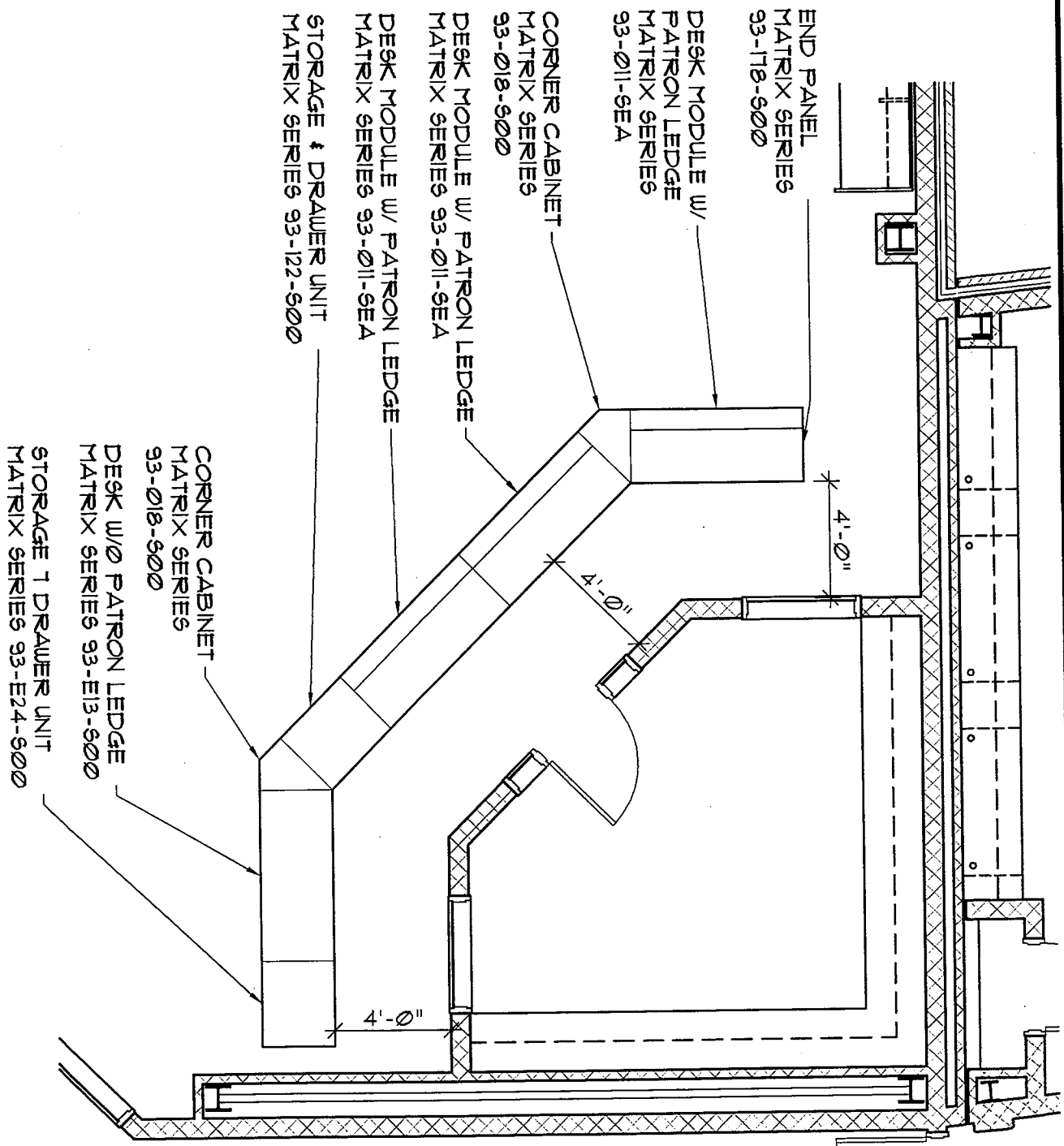
LACHIN OUBRE' & ASSOCIATES
A Professional Architectural Corporation
 8000 W. Esplanade Ave.
 Metairie, Louisiana 70002

DATE	04/24/2008
SCALE	AS NOTED
DRAWN	WH/BHT
JOB	2805B

1
ASK-6

LIBRARY REFERENCE DESK

SCALE: 3/16" = 1'-0"



DATE	4/24/09
SCALE	AS NOTED
DRAWN	EB
JOB	2805B

ST. BERNARD PARISH SCHOOL BOARD
CHALMETTE ELEMENTARY SCHOOL
 78 WEST CHALMETTE CIRCLE CHALMETTE LOUISIANA

LACHIN OUBRE & ASSOCIATES
 A Professional Architectural Corporation
 8000 W. Belpasado Ave. Suite 602 Metairie, Louisiana 70002

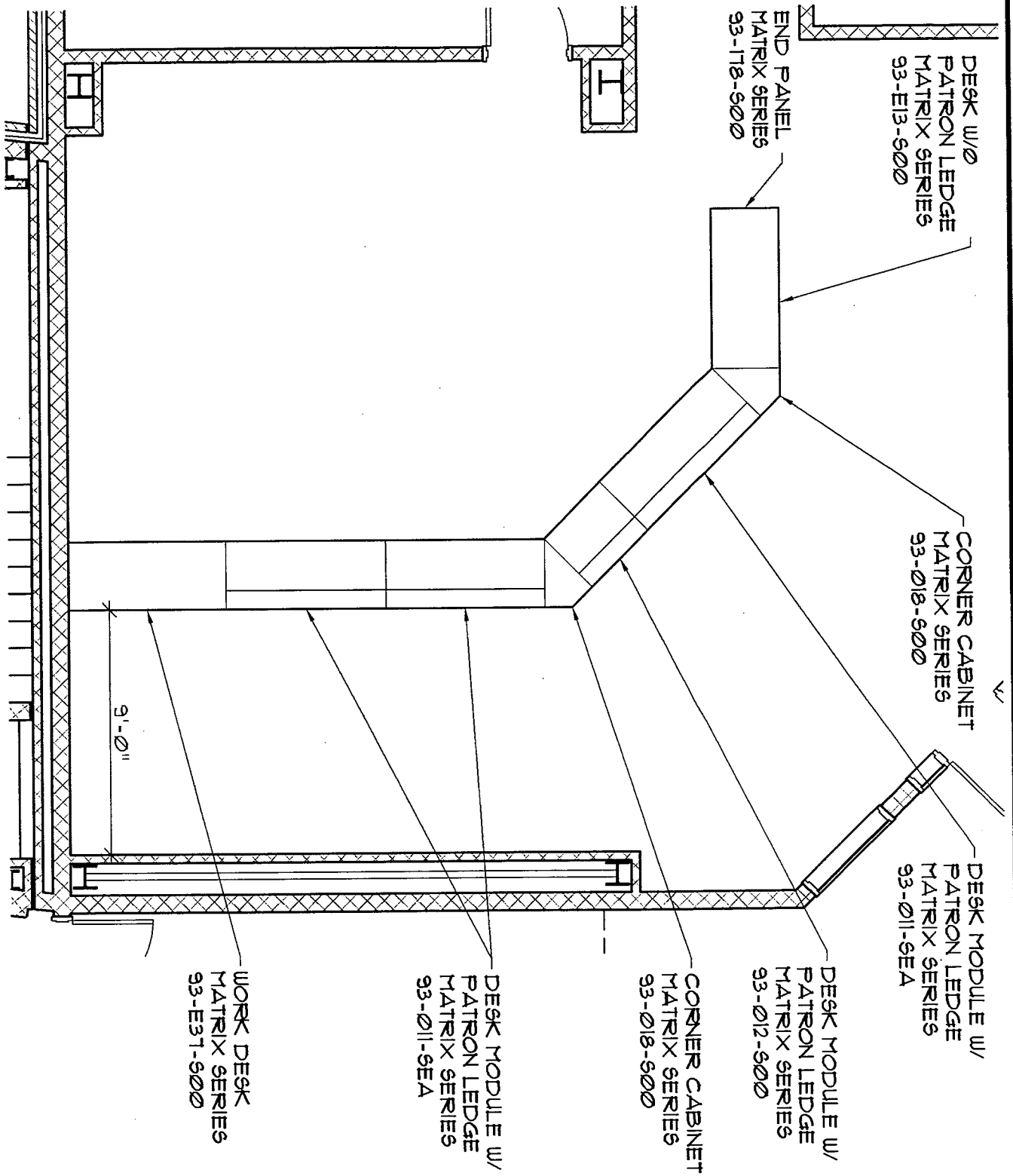
DRAWING TITLE
ENLARGED PLAN OF LIBRARY REFERENCE DESK UNITS

SHEET No.
ASK-6

ASK-7

RECEPTION DESK - FIRST FLOOR

SCALE: 3/16" = 1'-0"

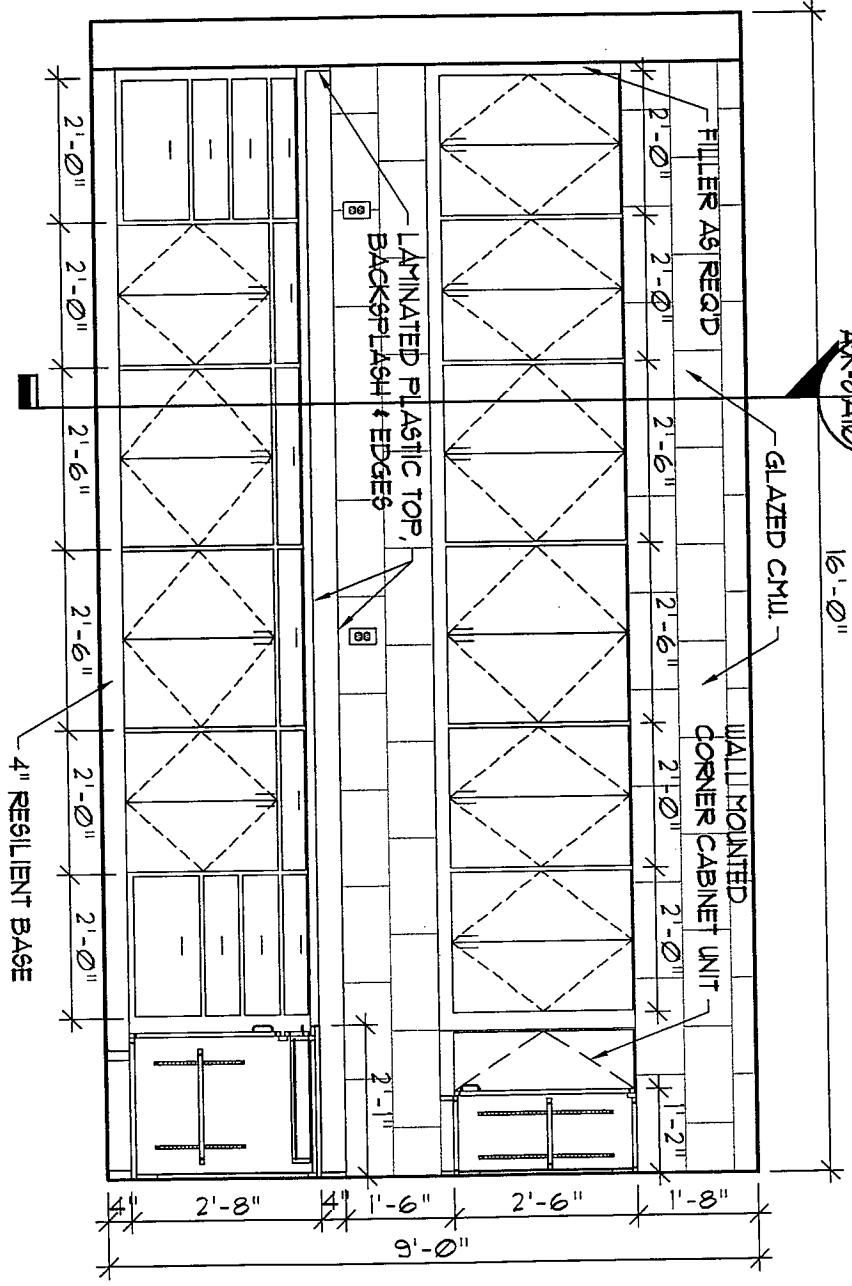


DATE	4/24/09	ST. BERNARD PARISH SCHOOL BOARD CHALMETTE ELEMENTARY SCHOOL 75 WEST CHALMETTE CIRCLE CHALMETTE LOUISIANA	DRAWING TITLE ENLARGED PLAN OF FIRST FLOOR RECEPTION DESK	SHEET No. ASK-7
SCALE	AS NOTED			
DRAWN	EB	LACHIN OUBRE & ASSOCIATES A Professional Architectural Corporation		
JOB	2805B			
8000 W. Esplanade Ave.		Suite 502	Metairie, Louisiana 70008	

ASK-8
1

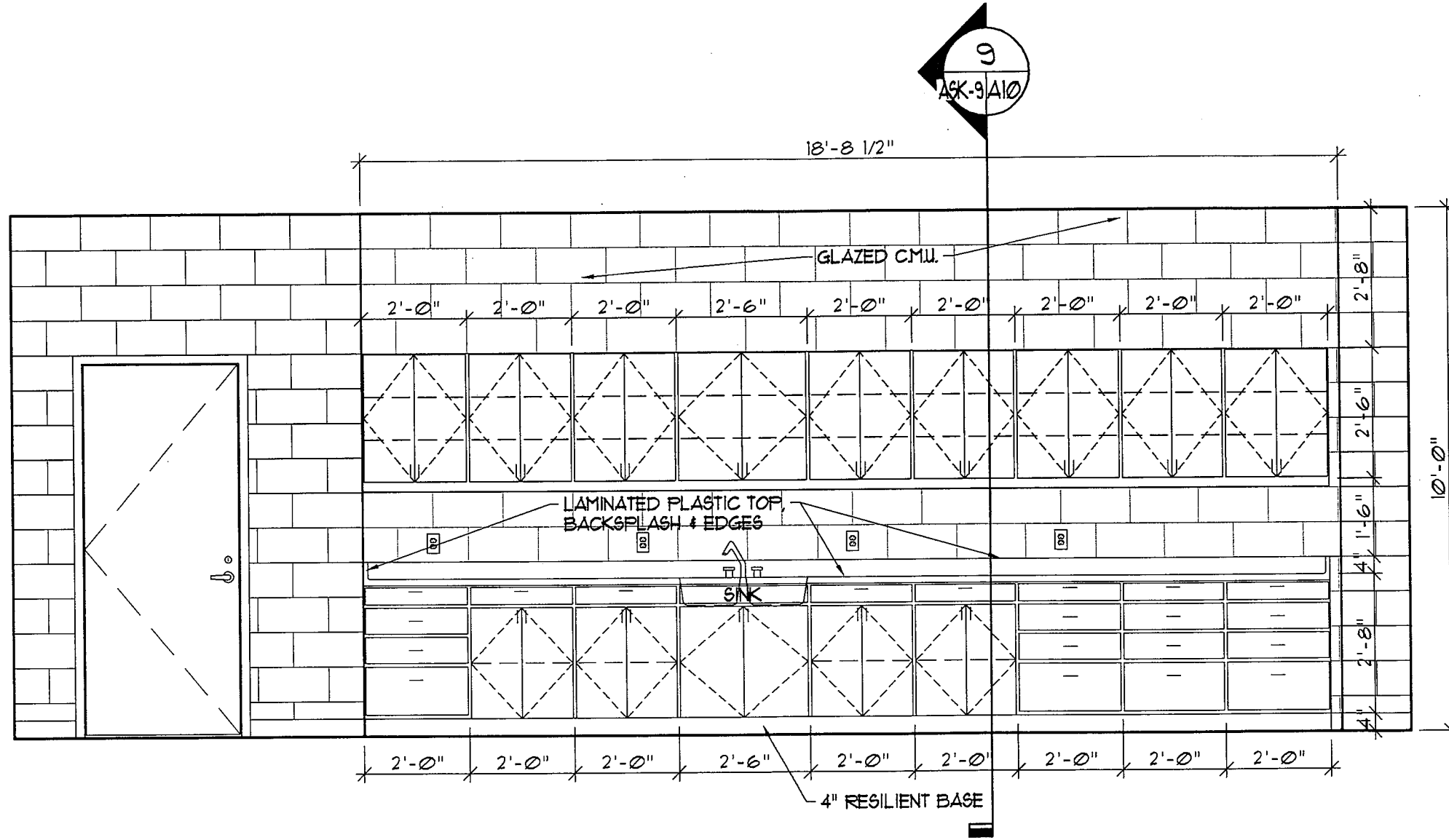
SCALE: 3/8" = 1'-0"

INTERIOR ELEVATION



ASK-8/A10
9

DATE 4/24/09	ST. BERNARD PARISH SCHOOL BOARD CHALMETTE ELEMENTARY SCHOOL 78 WEST CHALMETTE CIRCLE CHALMETTE LOUISIANA	DRAWING TITLE CASEWORK ELEVATION OF WORK ROOM 106	SHEET No.
SCALE AS NOTED		LACHIN OUBRE & ASSOCIATES A Professional Architectural Corporation 8000 W. Bayou Lake Ave. Metairie, Louisiana 70002	ASK-8
DRAWN BB	JOB 2805B		



1
ASK-9

INTERIOR ELEVATION

SCALE: 3/8" = 1'-0"

9
ASK-9A10

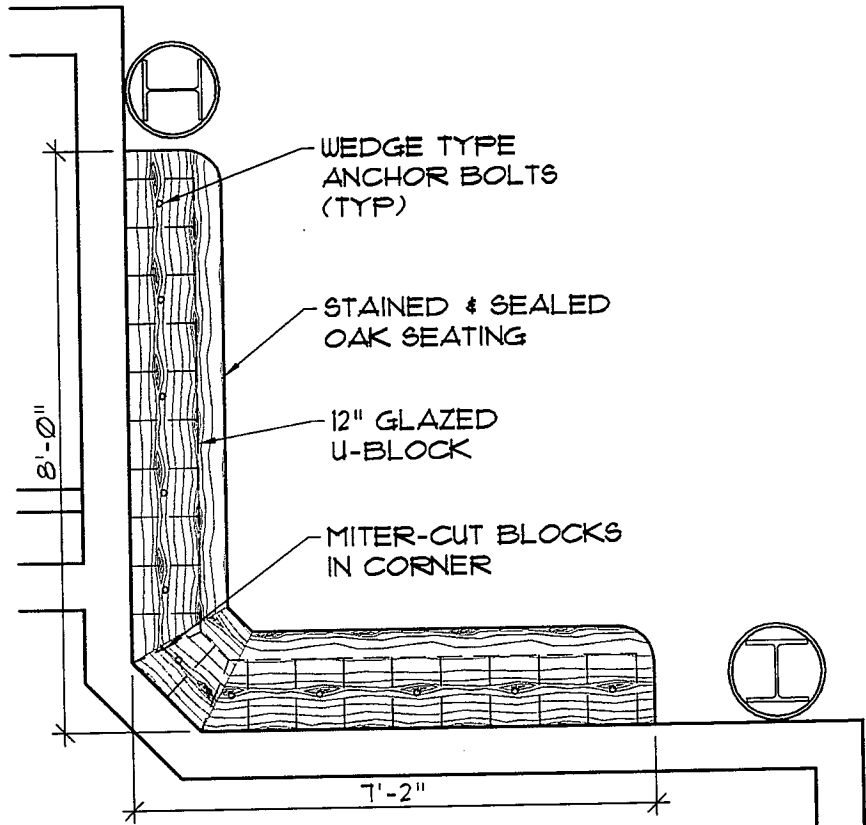
DATE	4/24/09
SCALE	AS NOTED
DRAWN	BB
JOB	2805B

ST. BERNARD PARISH SCHOOL BOARD
CHALMETTE ELEMENTARY SCHOOL
78 WEST CHALMETTE CORNER
 CHALMETTE, LOUISIANA

LACHIN OUBRE' & ASSOCIATES
 A Professional Architectural Corporation
9000 W. Esplanade Ave.
 Metairie, Louisiana 70002

DRAWING TITLE
**CASEWORK ELEVATION OF
 ART ROOM 138**

SHEET No.
ASK-9



WEDGE TYPE ANCHOR BOLTS (TYP)

STAINED & SEALED OAK SEATING

12" GLAZED U-BLOCK

MITER-CUT BLOCKS IN CORNER

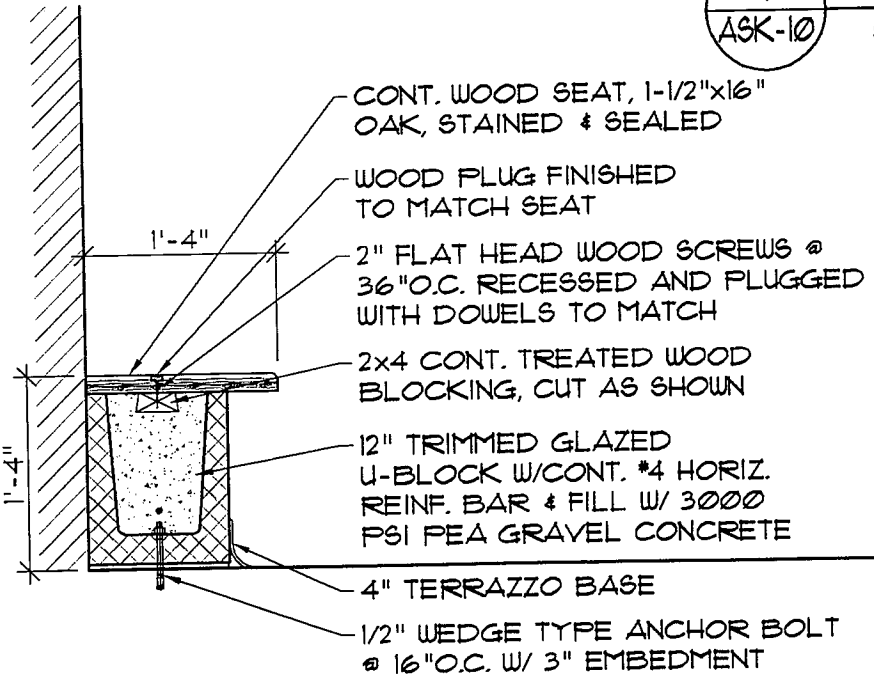
7'-2"

8'-0"

TYP. CORRIDOR BENCH

1
ASK-10

SCALE: 3/8" = 1'-0"



CONT. WOOD SEAT, 1-1/2" x 16" OAK, STAINED & SEALED

WOOD PLUG FINISHED TO MATCH SEAT

2" FLAT HEAD WOOD SCREWS @ 36" O.C. RECESSED AND PLUGGED WITH DOWELS TO MATCH

2x4 CONT. TREATED WOOD BLOCKING, CUT AS SHOWN

12" TRIMMED GLAZED U-BLOCK W/CONT. #4 HORIZ. REINF. BAR & FILL W/ 3000 PSI PEA GRAVEL CONCRETE

4" TERRAZZO BASE

1/2" WEDGE TYPE ANCHOR BOLT @ 16" O.C. W/ 3" EMBEDMENT

SECTION

2

ASK-10

SCALE: 3/4" = 1'-0"

DATE 4/24/09

SCALE AS NOTED

DRAWN EB

JOB 2805B

ST. BERNARD PARISH SCHOOL BOARD
CHAUMETTE ELEMENTARY SCHOOL
78 WEST CHALMETTE CIRCLE CHALMETTE LOUISIANA

LACHIN OUBRE & ASSOCIATES
A Professional Architectural Corporation

8000 W. Blochman Ave.

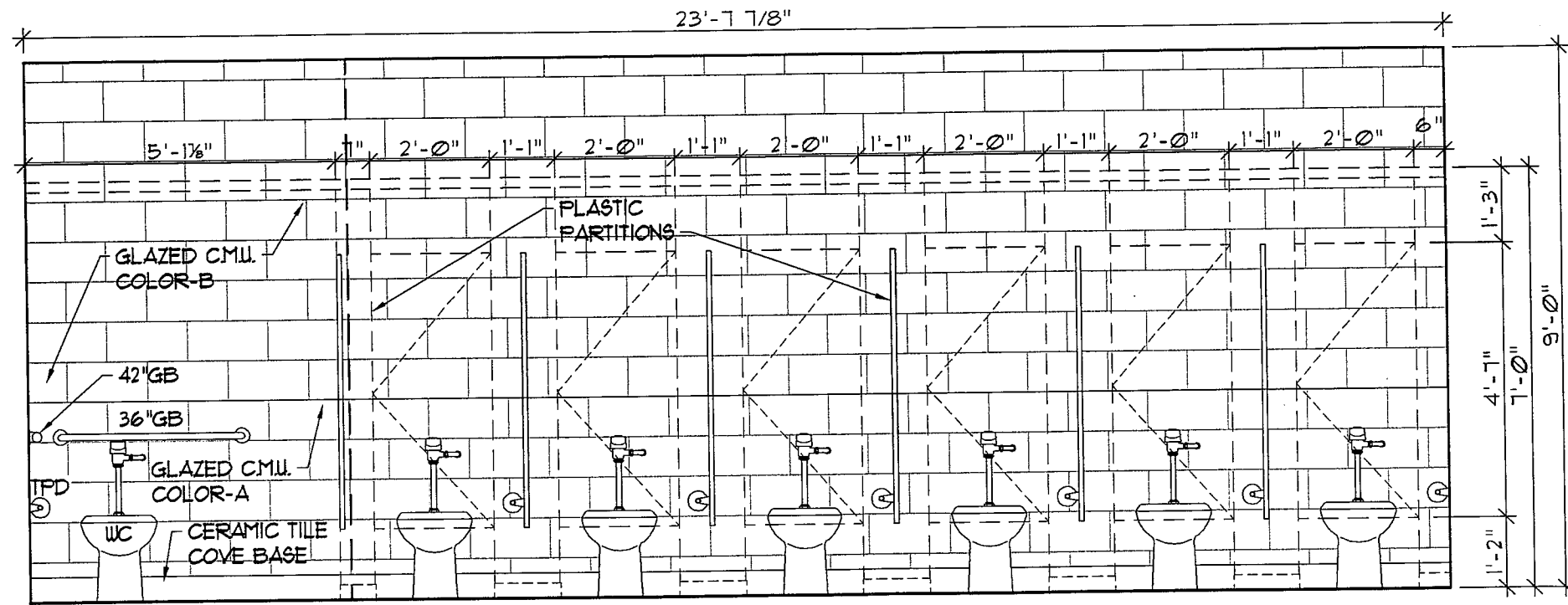
Slide 802

Metairie, Louisiana 70008

DRAWING TITLE
CORRIDOR BENCH DETAIL

SHEET No.

ASK-10



1
ASK-11

INTERIOR ELEVATION

SCALE: 3/8" = 1'-0"

DATE 4/24/09

SCALE AS NOTED

DRAWN BB

JOB 2805B

ST. BERNARD PARISH SCHOOL BOARD
CHALMETTE ELEMENTARY SCHOOL
78 WEST CHALMETTE CIRQUE

LACHIN OUBRE' & ASSOCIATES

A Professional Architectural Corporation

9000 W. Esplanade Ave.

Suite 902

Metairie, Louisiana 70002

DRAWING TITLE

**INTERIOR ELEVATION OF
 WOMEN'S RESTROOM 257**

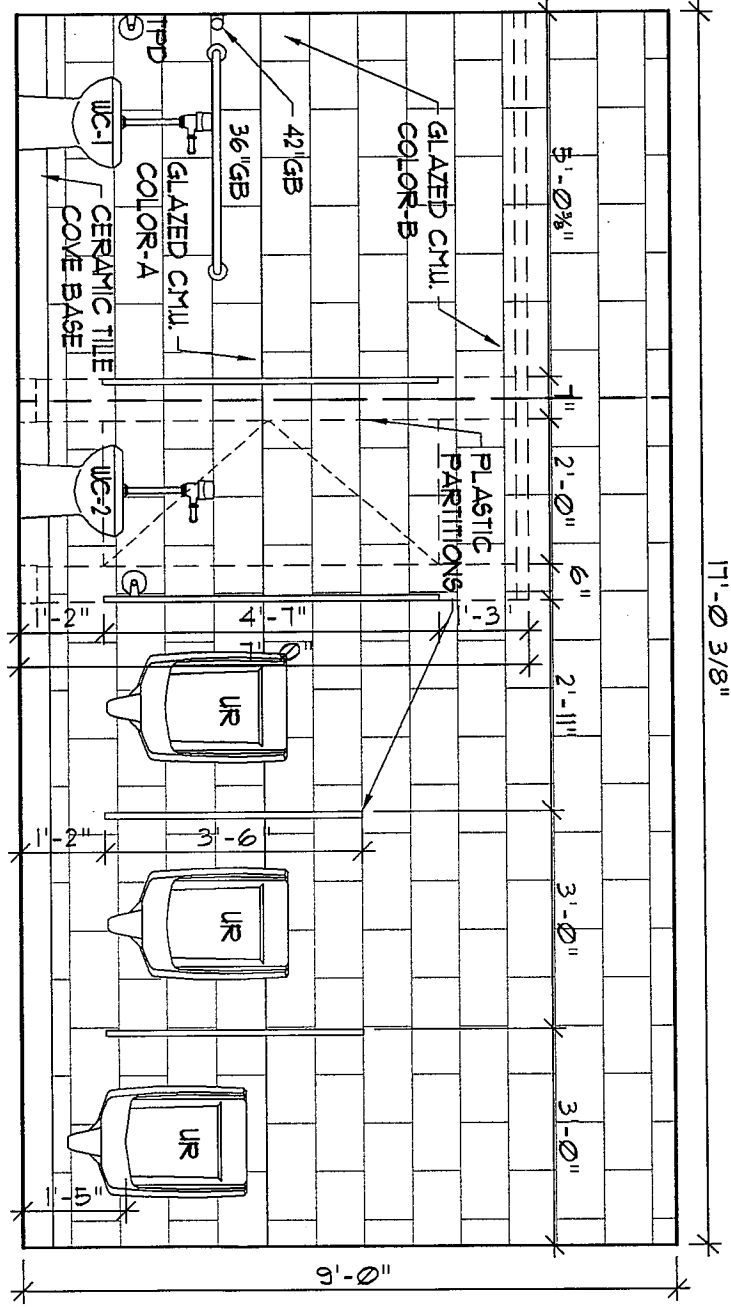
SHEET No.

ASK-11

1
ASK-12

SCALE: 3/8" = 1'-0"

INTERIOR ELEVATION



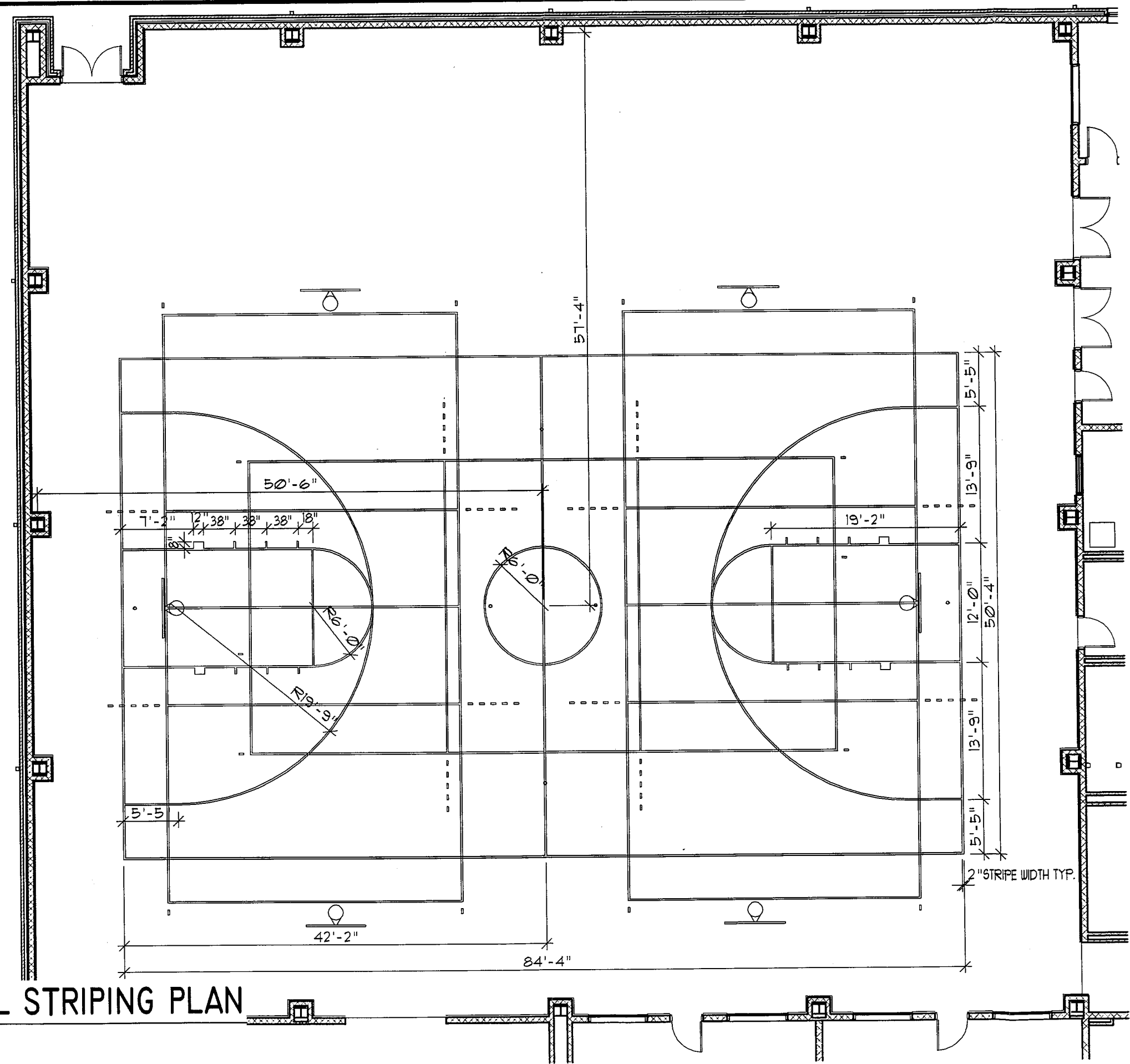
DATE	4/24/09
SCALE	AS NOTED
DRAWN	BB
JOB	2805B

ST. BERNARD PARISH SCHOOL BOARD
CHALMETTE ELEMENTARY SCHOOL
 78 WEST CHALMETTE CIRCLE CHALMETTE LOUISIANA

LACHIN OUBRE & ASSOCIATES
 A Professional Architectural Corporation
 8000 W. Bayshore Ave. Suite 802 Metairie, Louisiana 70008

DRAWING TITLE
INTERIOR ELEVATION OF BOY'S RESTROOM 264

SHEET No.
ASK-12

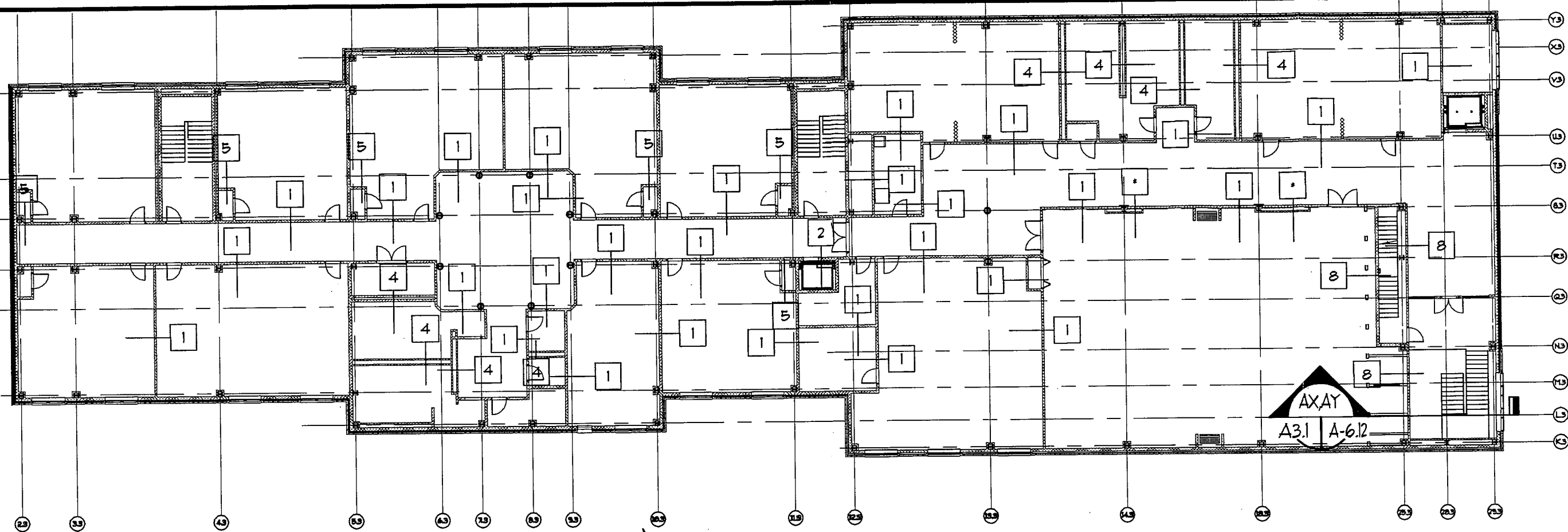


1
ASK-13

BASKETBALL STRIPING PLAN

SCALE: 3/32" = 1'-0"

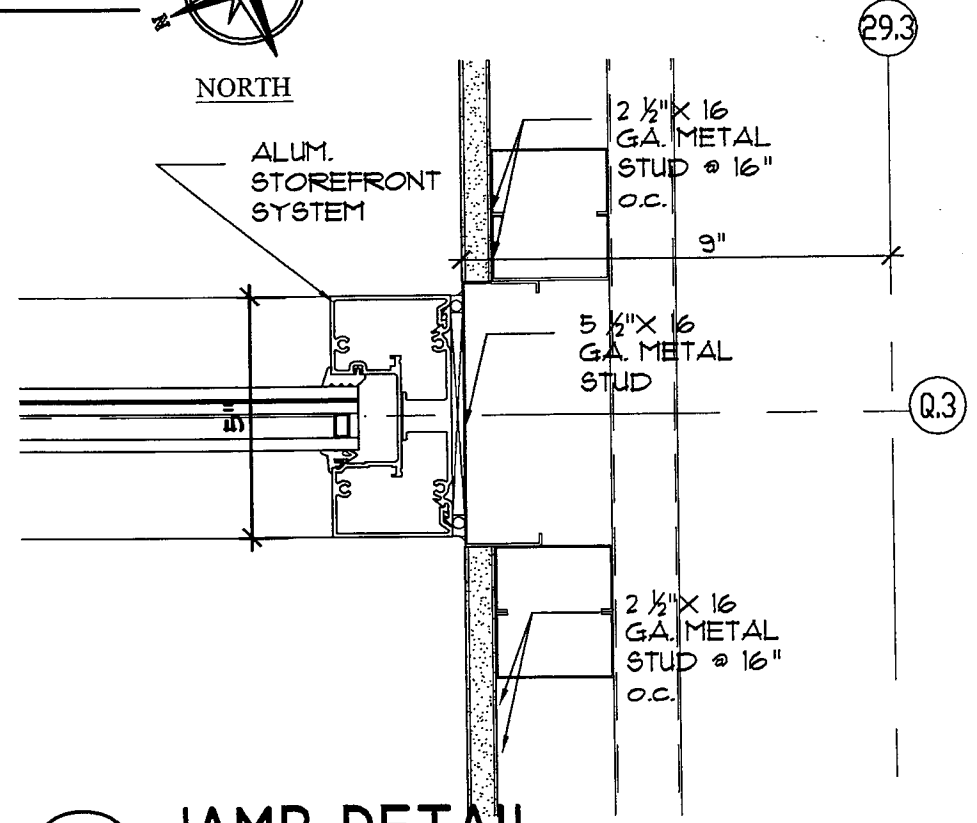
DATE	4/24/09	SHEET No.	ASK-13
SCALE	AS NOTED	DRAWING TITLE	GYMNASIUM SPORTS STRIPING PLAN
DRAWN	BB	DRAWING TITLE	ST. BERNARD PARISH SCHOOL BOARD CHALMETTE ELEMENTARY SCHOOL CHALMETTE, LOUISIANA
JOB	2805B	DRAWING TITLE	LACHIN OUBRE' & ASSOCIATES A Professional Architectural Corporation 9000 W. Esplanade Ave. Metairie, Louisiana 70002



2ND FLOOR PLAN - BUILDING 3

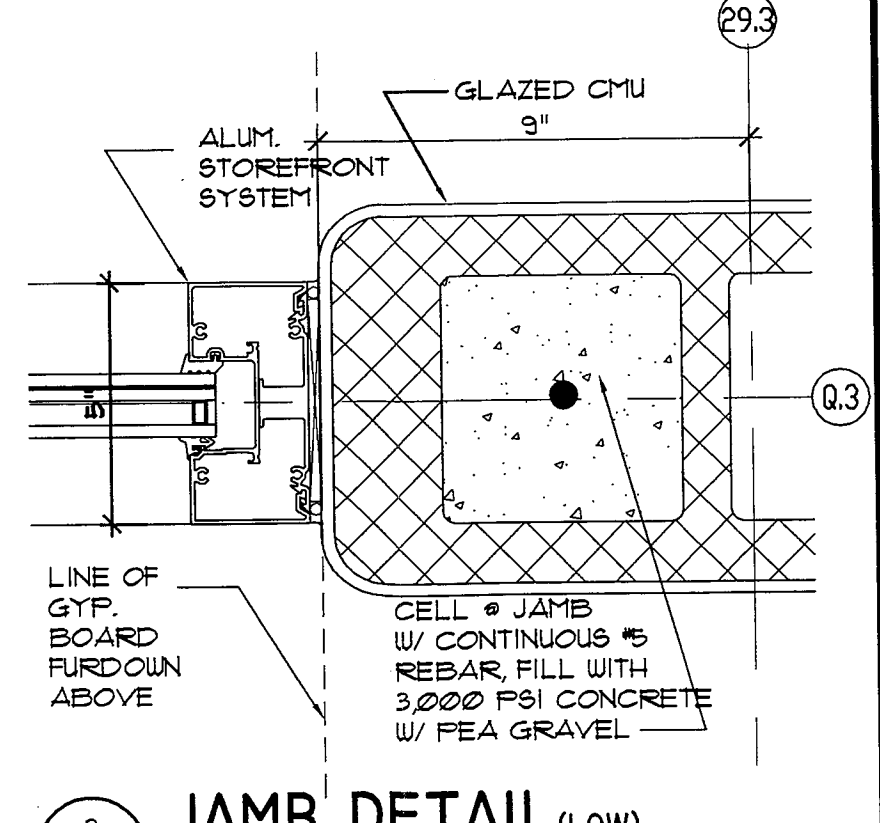


A3.1 ASK-18 SCALE: N.T.S.



JAMB DETAIL (HIGH)

ASK-22 ASK-18 SCALE: 3"=1'-0"



JAMB DETAIL (LOW)

ASK-22 ASK-18 SCALE: 3"=1'-0"

SHEET No.

BUILDING 3 2nd FLOOR PLAN

ST. BERNARD PARISH SCHOOL BOARD
CHALMETTE ELEMENTARY SCHOOL
78 WEST CHALMETTE COROLLE
CHALMETTE, LOUISIANA

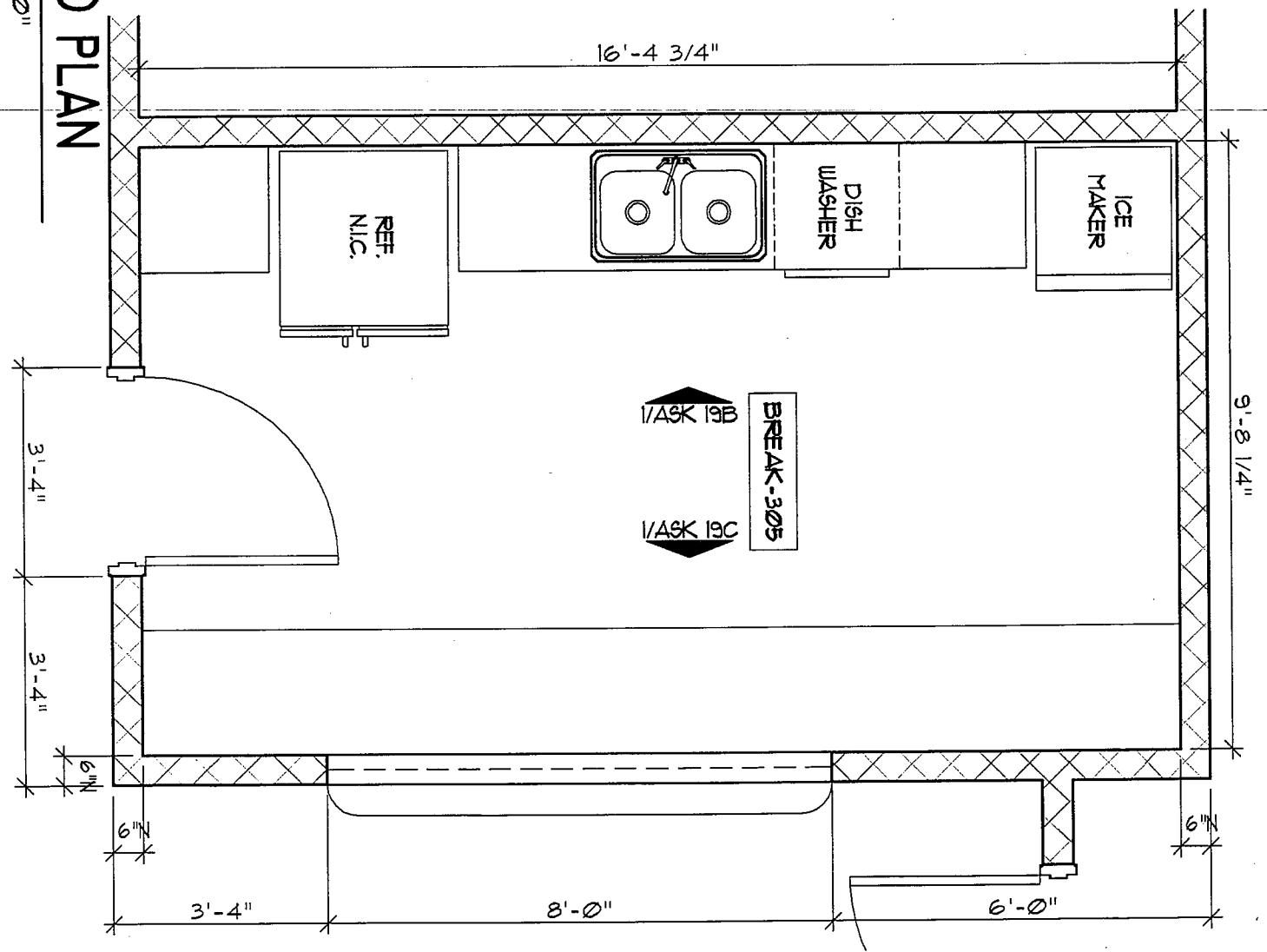
LACHIN OUBRE' & ASSOCIATES
A Professional Architectural Corporation
9000 W. Englewood Ave.
Metairie, Louisiana 70002
Sub 902

DATE	04/24/2008
SCALE	AS NOTED
DRAWN	BHT
JOB	2805B

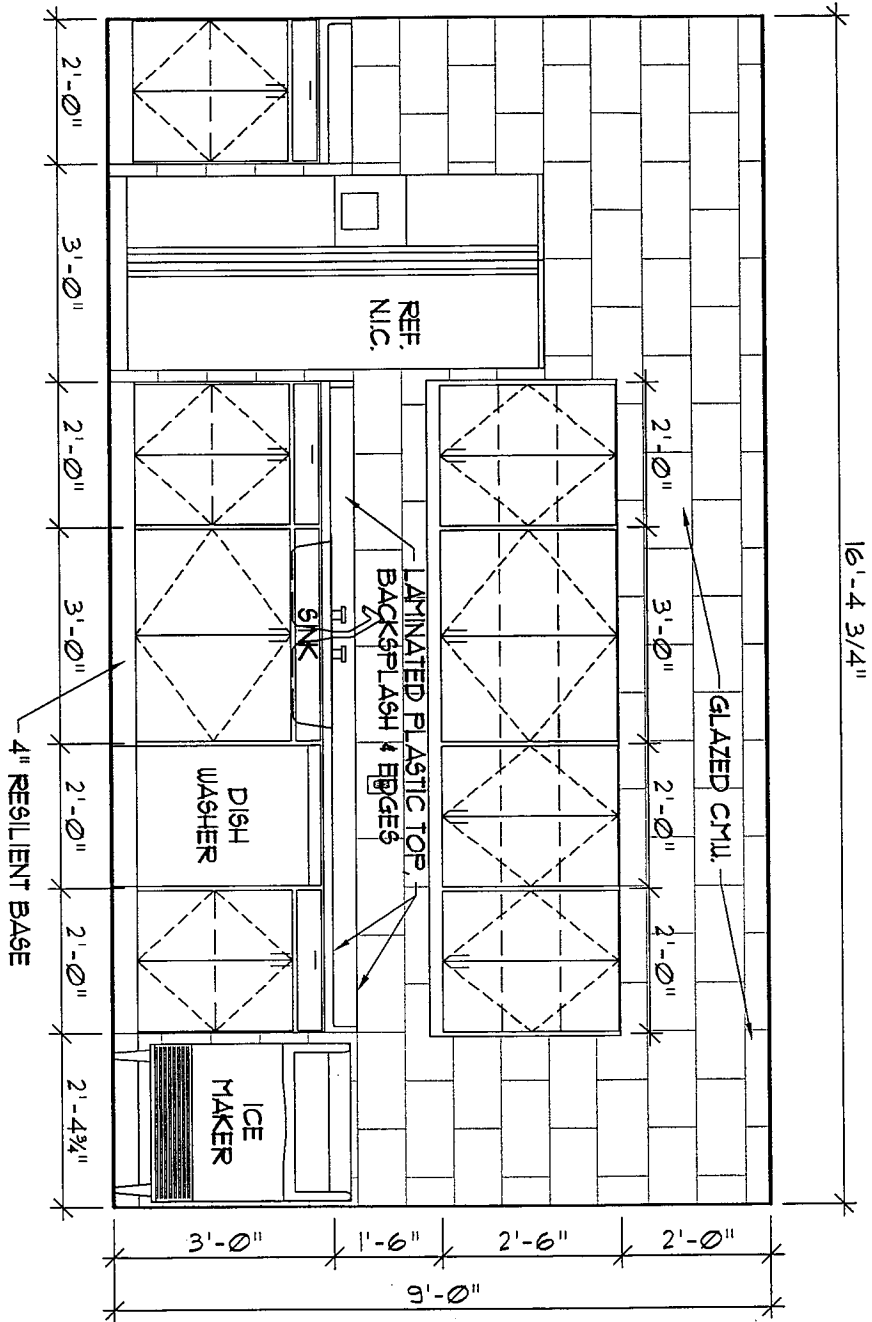
ASK-18

ASK-19
1

ENLARGED PLAN
SCALE: 3/8" = 1'-0"



DATE 4/24/09	ST. BERNARD PARISH SCHOOL BOARD CHALMETTE ELEMENTARY SCHOOL 78 WEST CHALMETTE CIRCLE CHALMETTE LOUISIANA	DRAWING TITLE ENLARGED PLAN OF BREAK ROOM 305	SHEET No.
SCALE AS NOTED		LACHIN OUBRE & ASSOCIATES A Professional Architectural Corporation 8000 W. Bayshore Ave. Suite 202 Metairie, Louisiana 70002	ASK-19
DRAWN EB			
JOB 2805B			

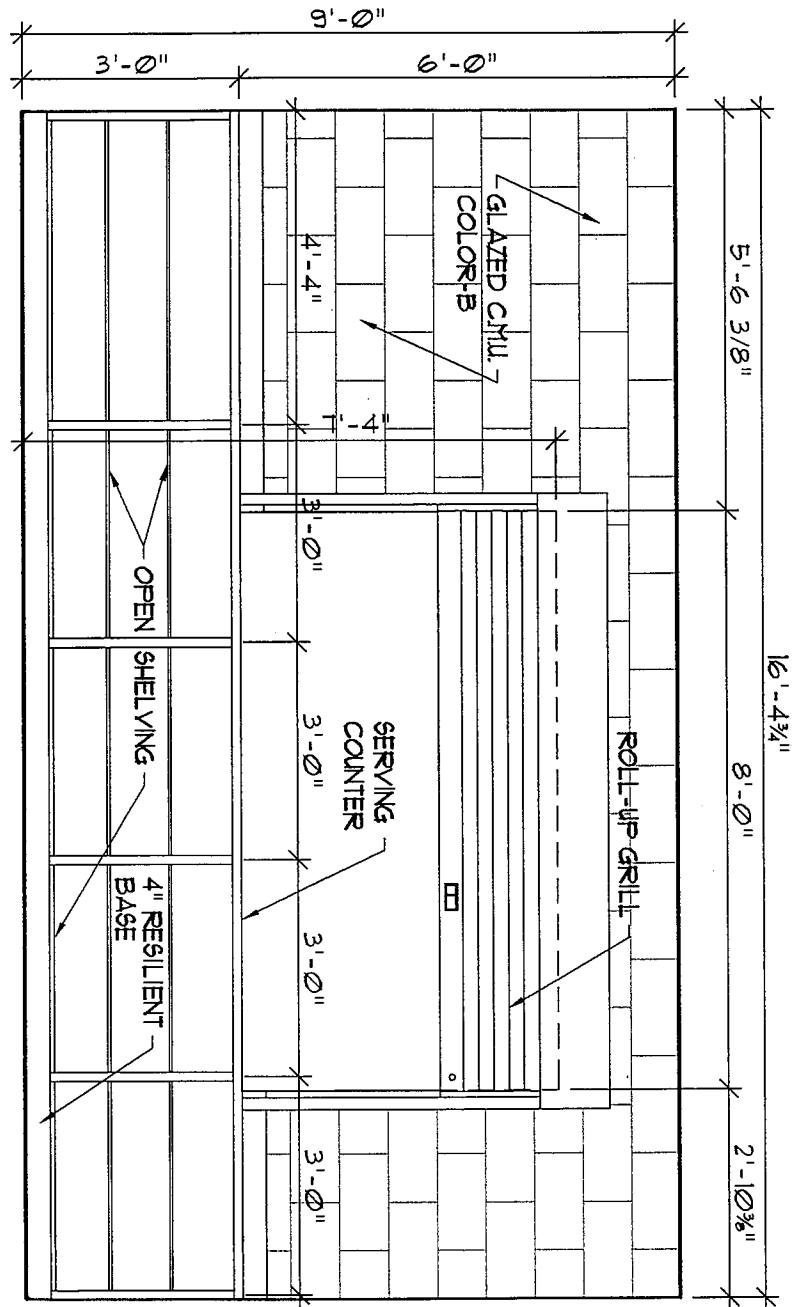


INTERIOR ELEVATION

1
ASK-19B

SCALE: 3/8" = 1'-0"

DATE	4/24/09	ST. BERNARD PARISH SCHOOL BOARD CHALMETTE ELEMENTARY SCHOOL <small>78 WEST CHALMETTE CIRCLE CHALMETTE LOUISIANA</small>	DRAWING TITLE	SHEET No. ASK-19B
SCALE	AS NOTED		LACHIN OUBRE & ASSOCIATES <small>A Professional Architectural Corporation</small> <small>6000 W. Bayshore Ave. Metairie, Louisiana 70008</small>	
DRAWN	EB			
JOB	2805B			



1
ASK-19C

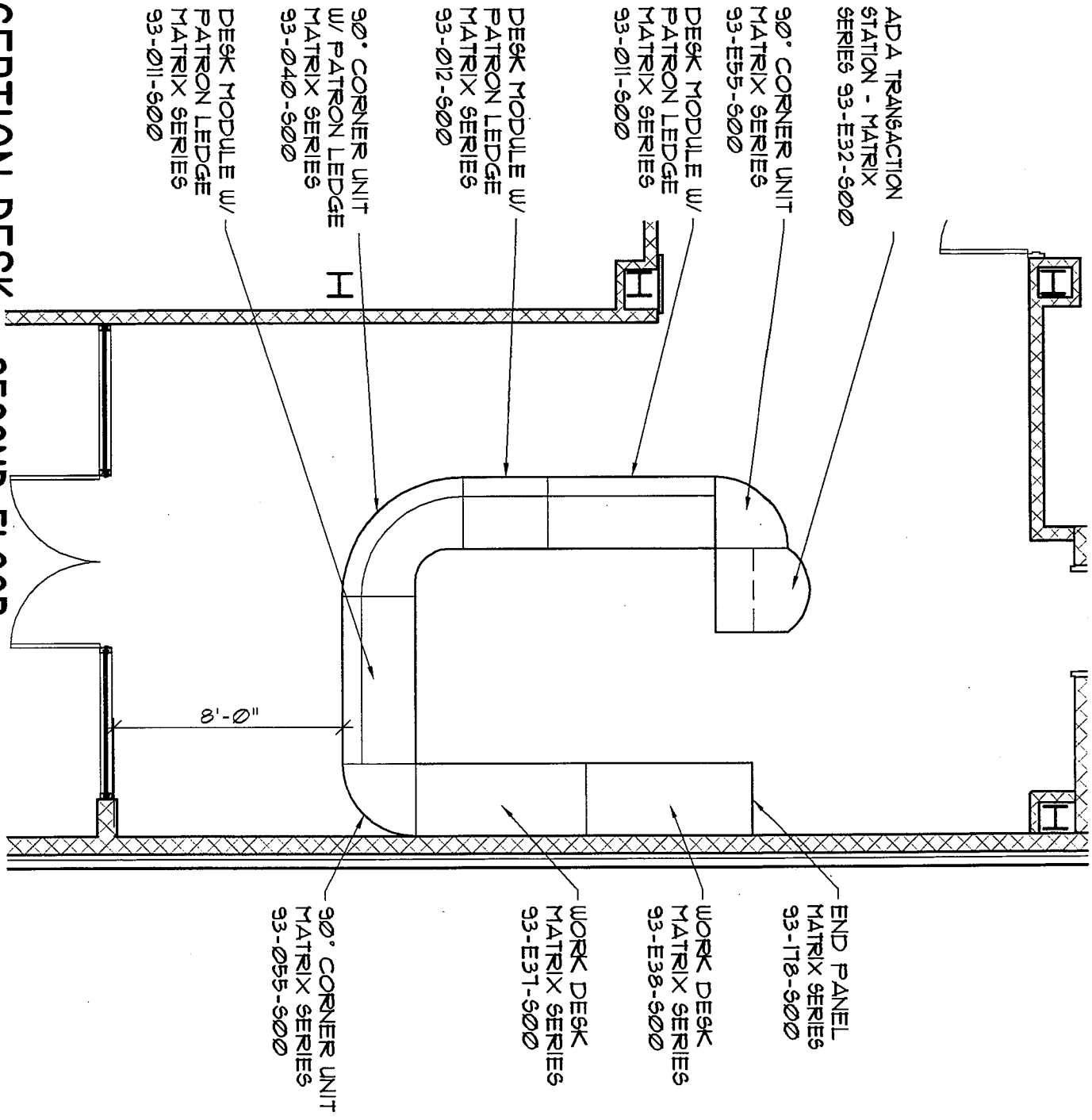
INTERIOR ELEVATION
SCALE: 3/8" = 1'-0"

DATE 4/24/09	ST. BERNARD PARISH SCHOOL BOARD CHALMETTE ELEMENTARY SCHOOL 78 WEST CHALMETTE CIRCLE CHALMETTE LOUISIANA	DRAWING TITLE INTERIOR ELEVATION OF BREAK ROOM 305	SHEET No.
SCALE AS NOTED		LACHEN OUBRE & ASSOCIATES A Professional Architectural Corporation 8000 W. Bayshore Ave. Suite 602 Metairie, Louisiana 70002	ASK-19C
DRAWN EB			
JOB 2805B			

ASK-20

RECEPTION DESK - SECOND FLOOR

SCALE: 3/16" = 1'-0"



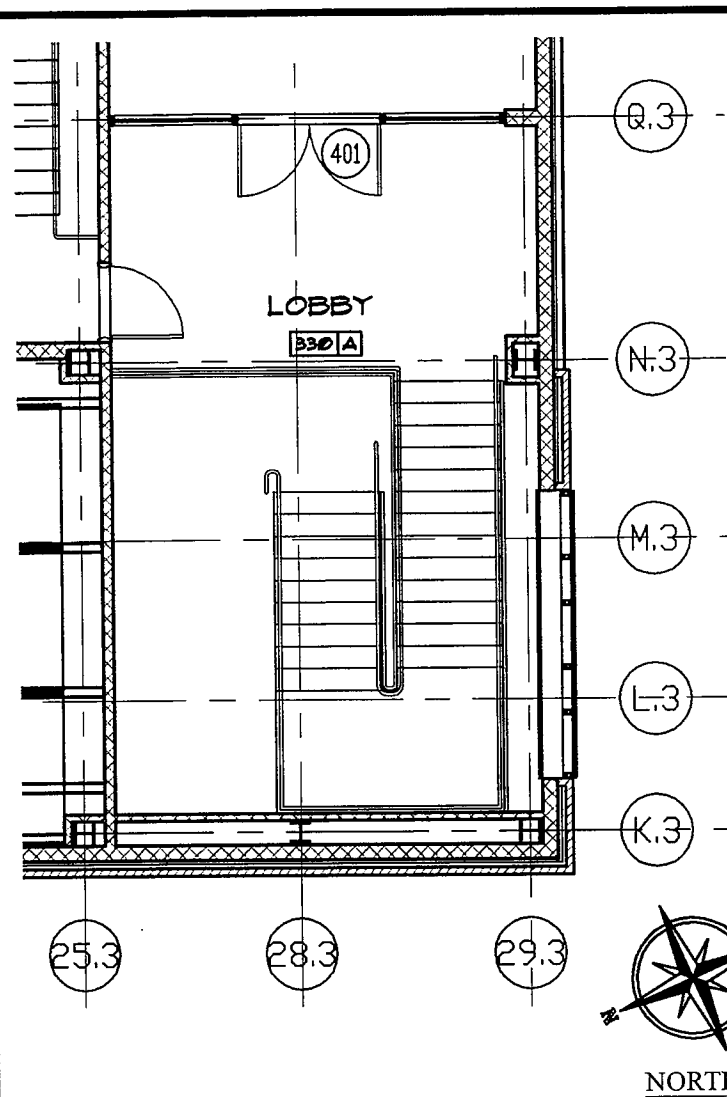
DATE	4/24/09
SCALE	A8 NOTED
DRAWN	BB
JOB	2805B

ST. BERNARD PARISH SCHOOL BOARD
CHALMETTE ELEMENTARY SCHOOL
 78 WEST CHALMETTE CIRCLE CHALMETTE LOUISIANA

LACHIN OUBRE & ASSOCIATES
 A Professional Architectural Corporation
 6000 W. Esplanade Ave. Suite 802 Metairie, Louisiana 70002

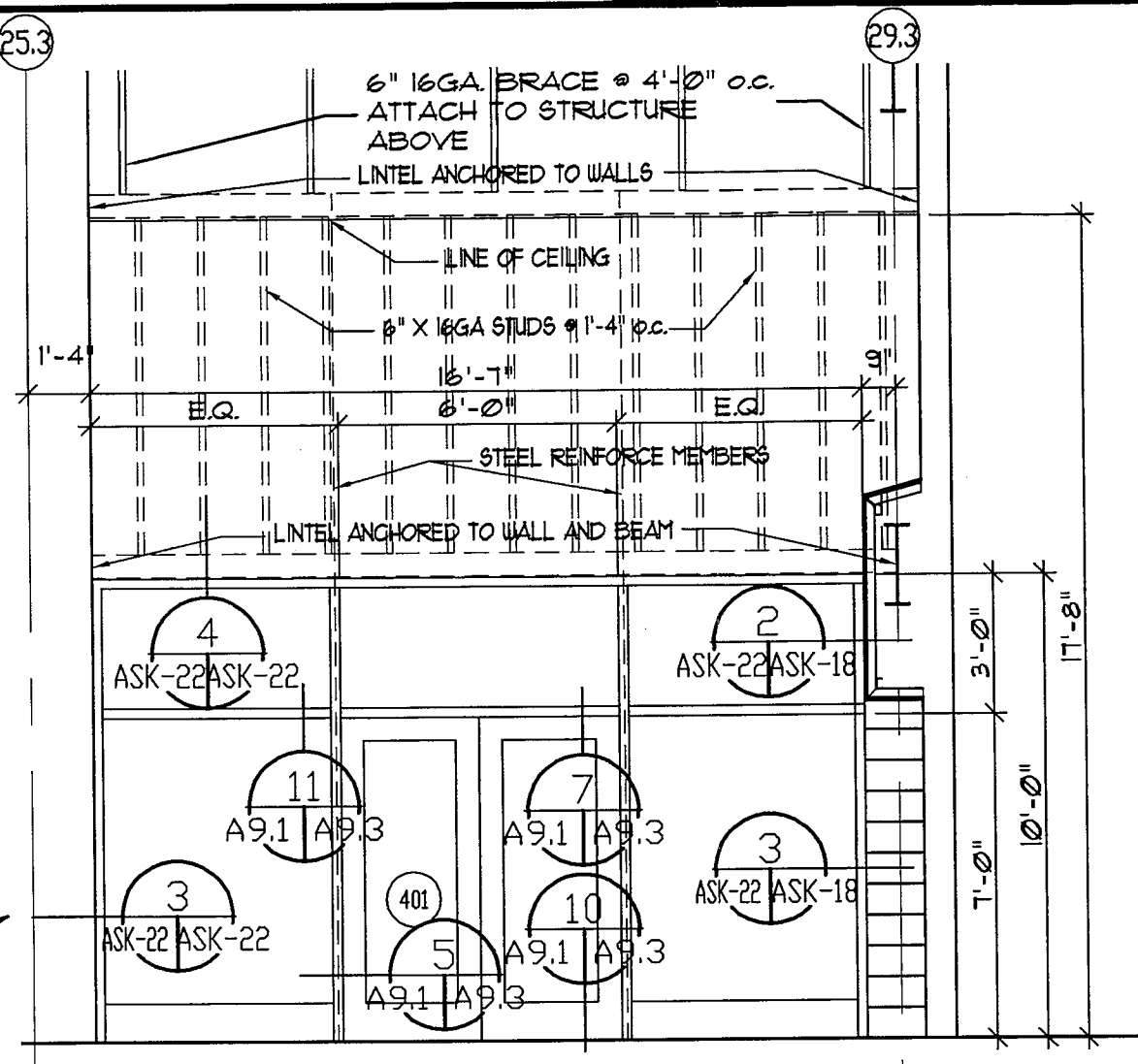
DRAWING TITLE
ENLARGED PLAN OF SECOND FLOOR RECEPTION DESK

SHEET No.
ASK-20



2ND FLOOR PARTIAL PLAN - BUILDING 3

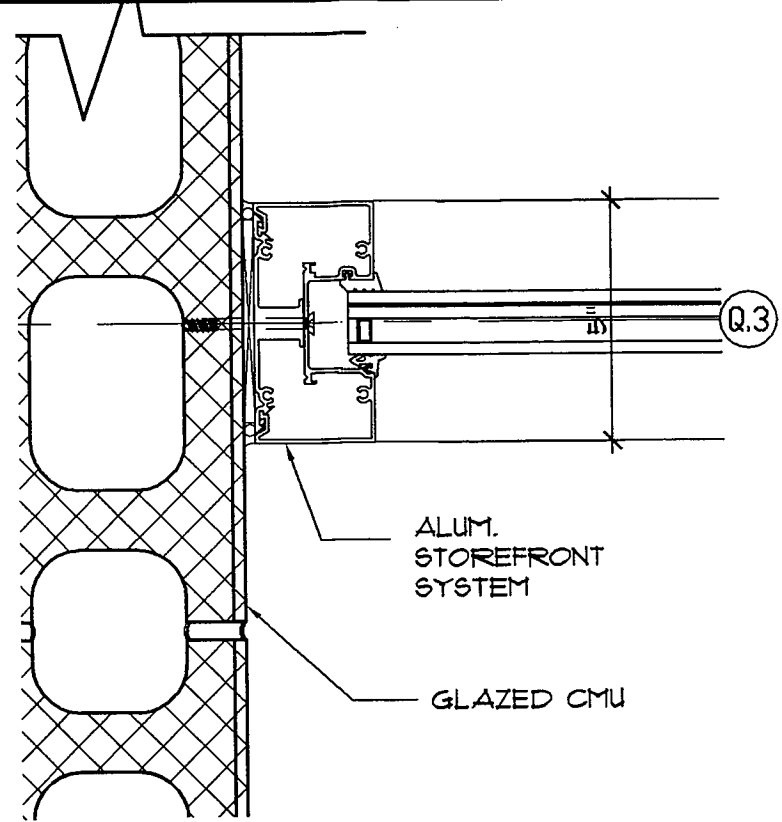
AS.1 ASK-22 SCALE: 1/8"=1'-0"



DOOR AND FRAME TYPE

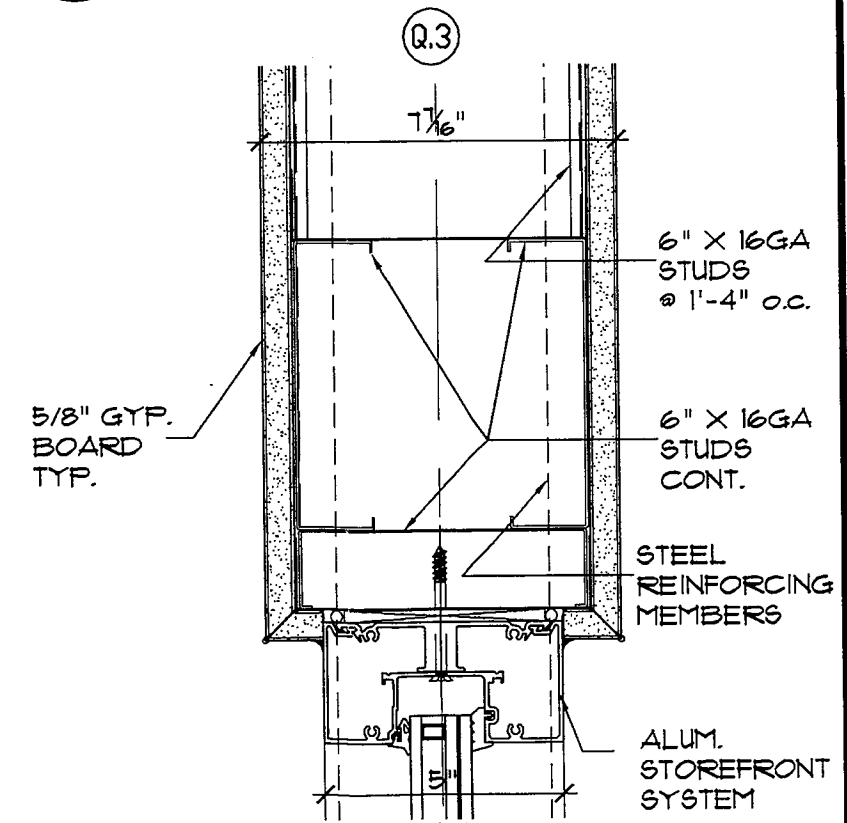
ASK-22 ASK-22 SCALE: 1/4"=1'-0"

MARK	SIZE	MAT'L	SEE ELEV. FOR FRAME DETAILS			MAT'L	ELEV	HWD SET	REMARKS
			HEAD	JAMB	SILL				
401	PR 3'-0" x 7'-0" x 1 3/4"	ALUM.	A9.3 5	A9.3 7		ALUM.	ASK-22 2	1	RM 330, 2nd FLOOR LOBBY



JAMB DETAIL

ASK-22 ASK-22 SCALE: 3"=1'-0"



HEAD DETAIL

ASK-22 ASK-22 SCALE: 3"=1'-0"

ASK-22

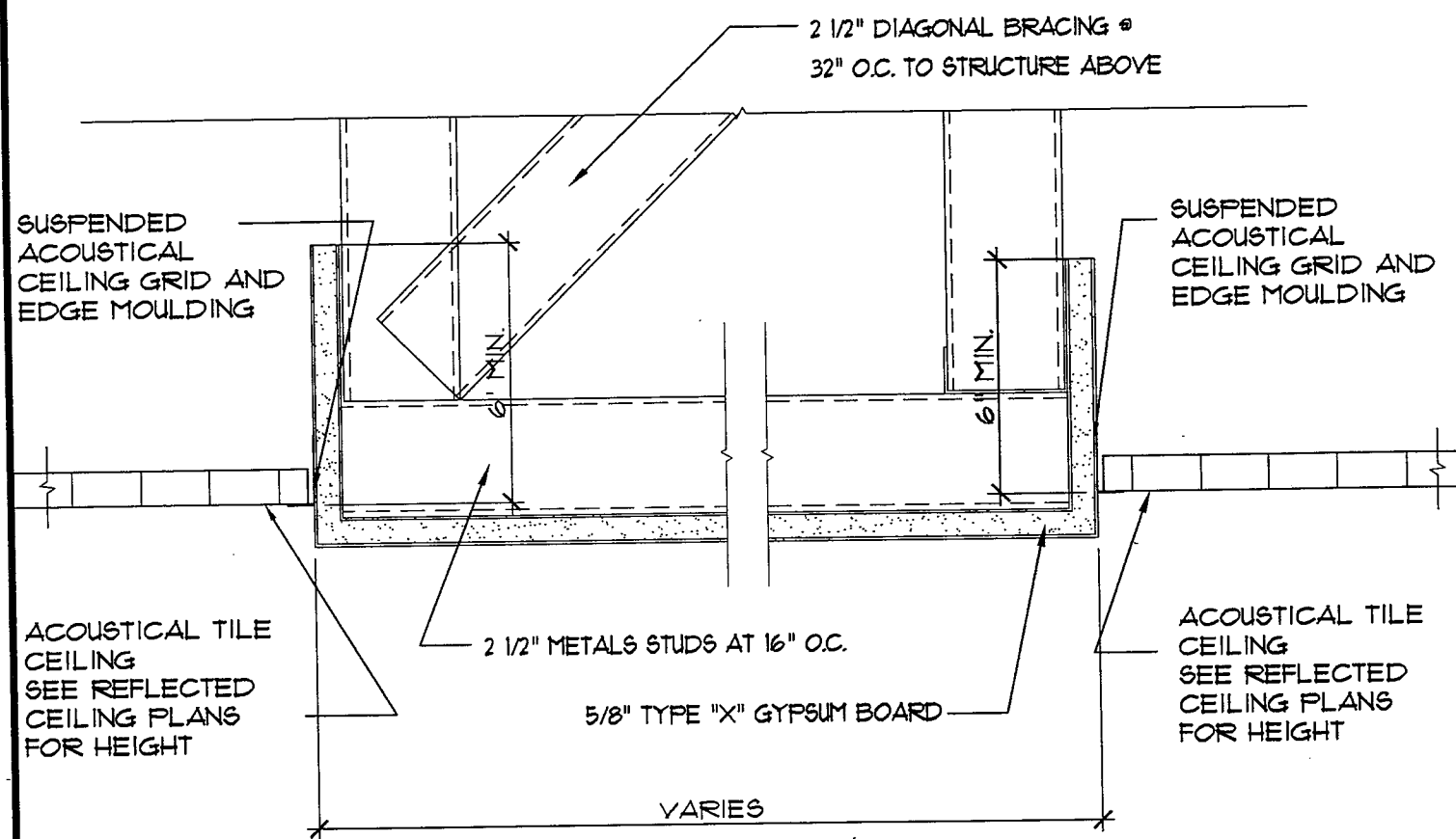
SHEET No.

DRAWING TITLE
**BUILDING 3 PARTIAL
 2ND FLOOR PLAN,
 OPENING ELEV. AND
 DETAILS**

ST. BERNARD PARISH SCHOOL BOARD
 CHALMETTE ELEMENTARY SCHOOL
78 WEST CHALMETTE CIRCLE
 CHALMETTE, LOUISIANA

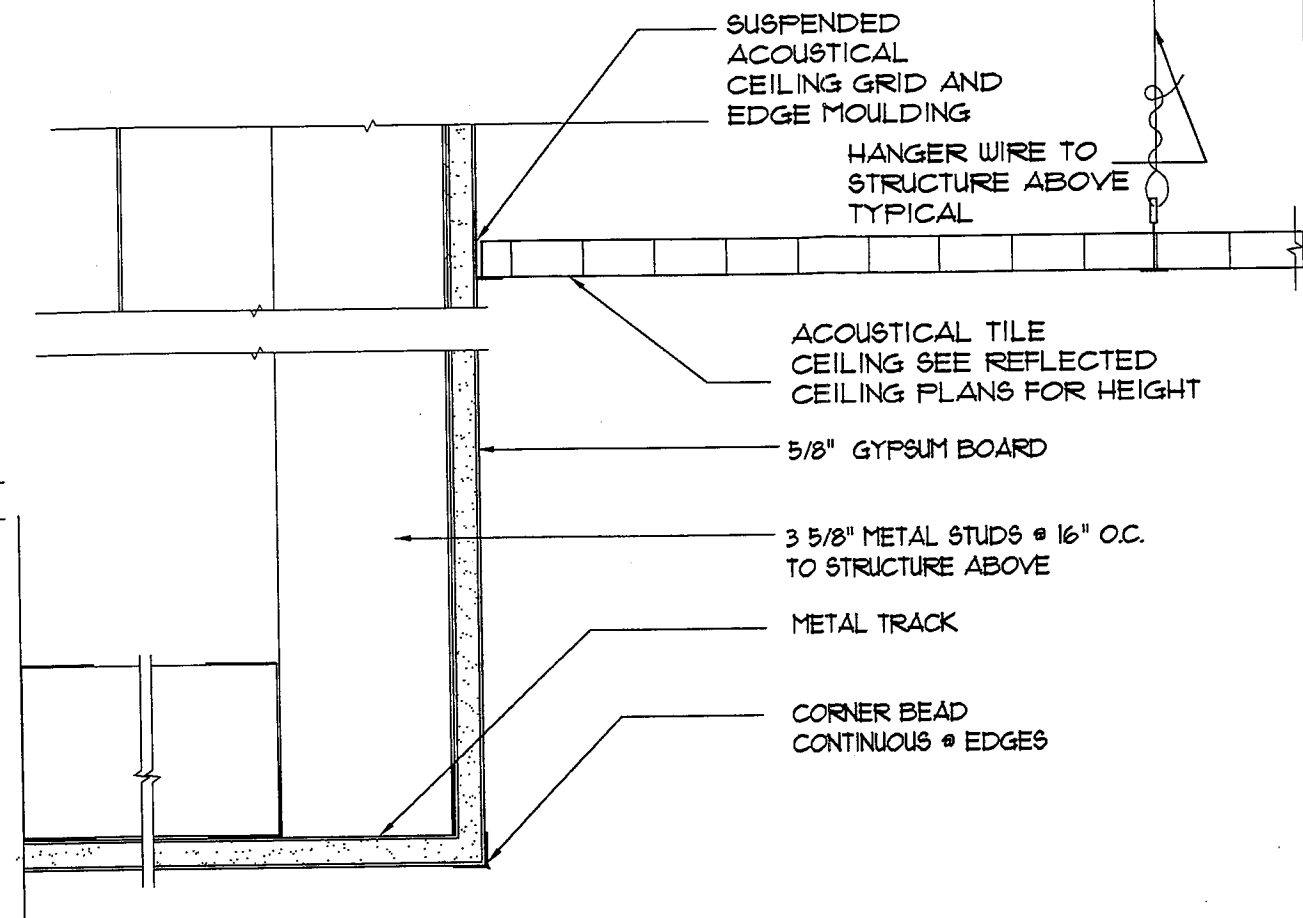
LACHIN OUBRE' & ASSOCIATES
A Professional Architectural Corporation
 9000 W. Esplanade Ave.
 Metairie, Louisiana 70002
 Sub 502

DATE	04/24/2009
SCALE	AS NOTED
DRAWN	BHT
JOB	2805B



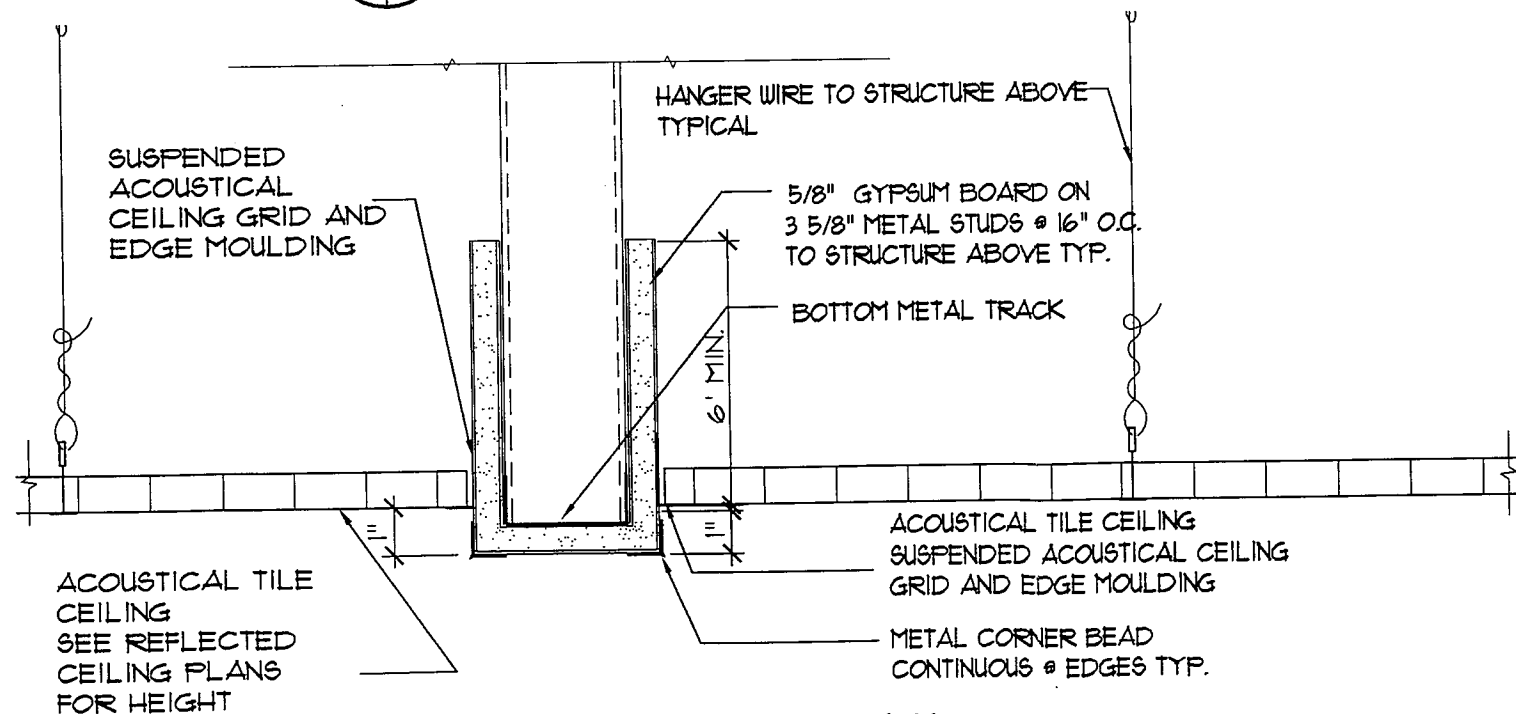
CEILING DETAIL

A4X ASK-24 SCALE: 1/4"=1'-0"



CEILING DETAIL

A4X ASK-24 SCALE: 1/4"=1'-0"



CEILING DETAIL

A4X ASK-24 SCALE: 1/4"=1'-0"

SHEET No.

ASK-24

DRAWING TITLE

CEILING DETAILS

ST. BERNARD PARISH SCHOOL BOARD

CHALMETTE ELEMENTARY SCHOOL

CHALMETTE, LOUISIANA

LACHIN OUBRE' & ASSOCIATES

A Professional Architectural Corporation

8000 W. Esplanade Ave.

SL 08 002

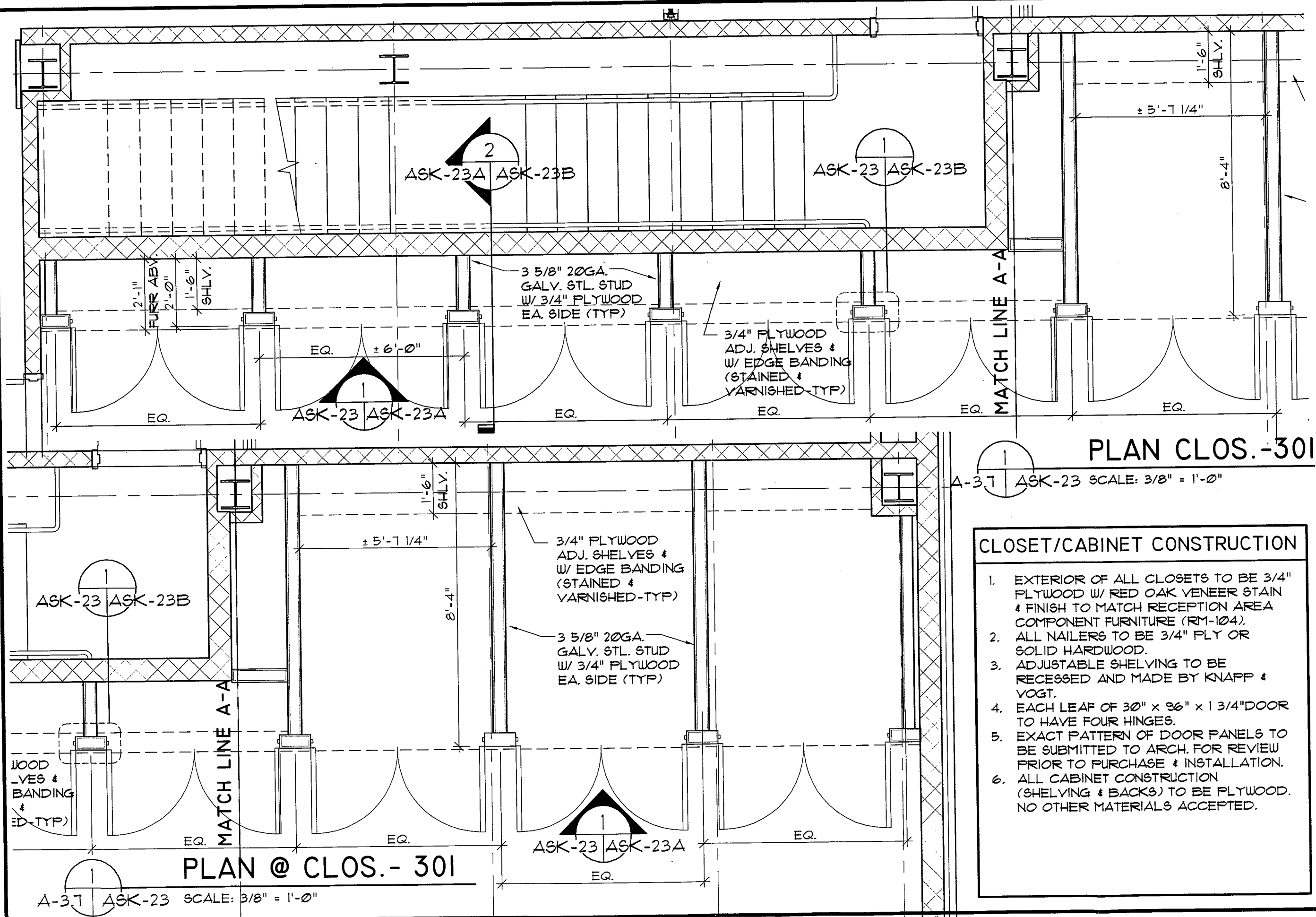
Metairie, Louisiana 70002

DATE 04/24/2008

SCALE AS NOTED

DRAWN BHT

JOB 2805B



- CLOSET/CABINET CONSTRUCTION**
1. EXTERIOR OF ALL CLOSETS TO BE 3/4" PLYWOOD W/ RED OAK VENEER STAIN & FINISH TO MATCH RECEPTION AREA COMPONENT FURNITURE (RM-104).
 2. ALL NAILERS TO BE 3/4" PLY OR SOLID HARDWOOD.
 3. ADJUSTABLE SHELVING TO BE RECESSED AND MADE BY KNAPP & YOGT.
 4. EACH LEAF OF 30" x 96" x 1 3/4" DOOR TO HAVE FOUR HINGES.
 5. EXACT PATTERN OF DOOR PANELS TO BE SUBMITTED TO ARCH. FOR REVIEW PRIOR TO PURCHASE & INSTALLATION.
 6. ALL CABINET CONSTRUCTION (SHELVING & BACKS) TO BE PLYWOOD. NO OTHER MATERIALS ACCEPTED.

ASK-23

SHEET No.

CASEWORK PLAN AT AUDITORIUM - RM 301

PLAN CLOS.-301

SCALE: 3/8" = 1'-0"

CLOSET/CABINET CONSTRUCTION

1. EXTERIOR OF ALL CLOSETS TO BE 3/4" PLYWOOD W/ RED OAK VENEER STAIN & FINISH TO MATCH RECEPTION AREA COMPONENT FURNITURE (RM-104).
2. ALL NAILERS TO BE 3/4" PLY OR SOLID HARDWOOD.
3. ADJUSTABLE SHELVING TO BE RECESSED AND MADE BY KNAPP & YOGT.
4. EACH LEAF OF 30" x 96" x 1 3/4" DOOR TO HAVE FOUR HINGES.
5. EXACT PATTERN OF DOOR PANELS TO BE SUBMITTED TO ARCH. FOR REVIEW PRIOR TO PURCHASE & INSTALLATION.
6. ALL CABINET CONSTRUCTION (SHELVING & BACKS) TO BE PLYWOOD. NO OTHER MATERIALS ACCEPTED.

PLAN @ CLOS.- 301

SCALE: 3/8" = 1'-0"

DATE: 4/23/09

SCALE: AS NOTED

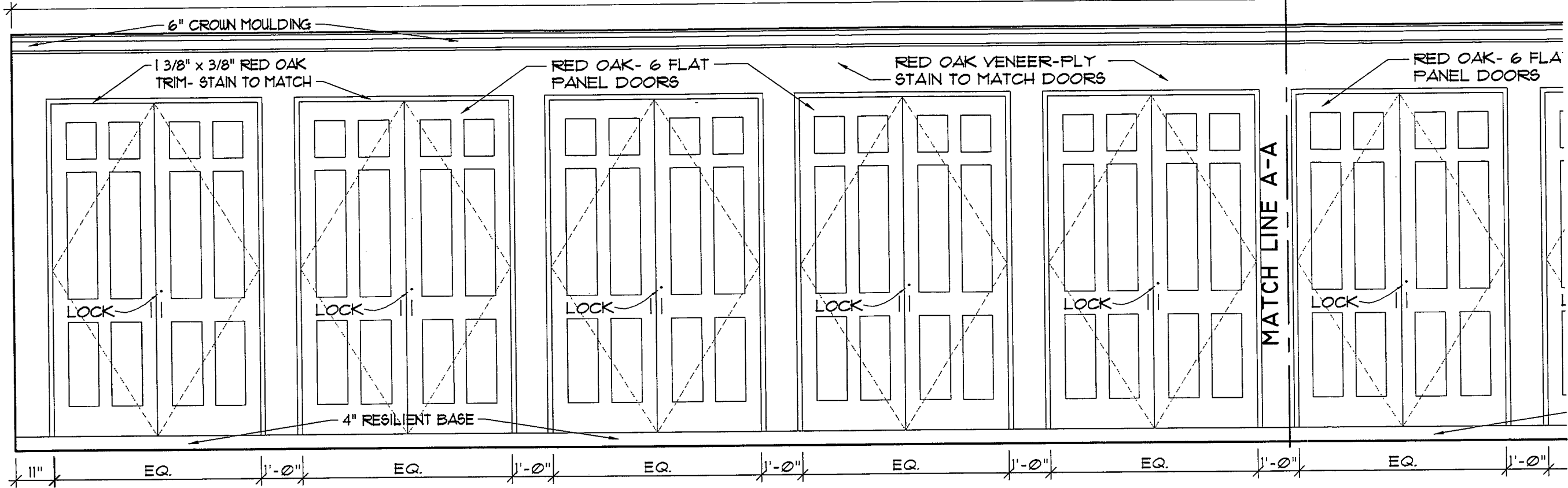
DRAWN: ABS

JOB: 2805B

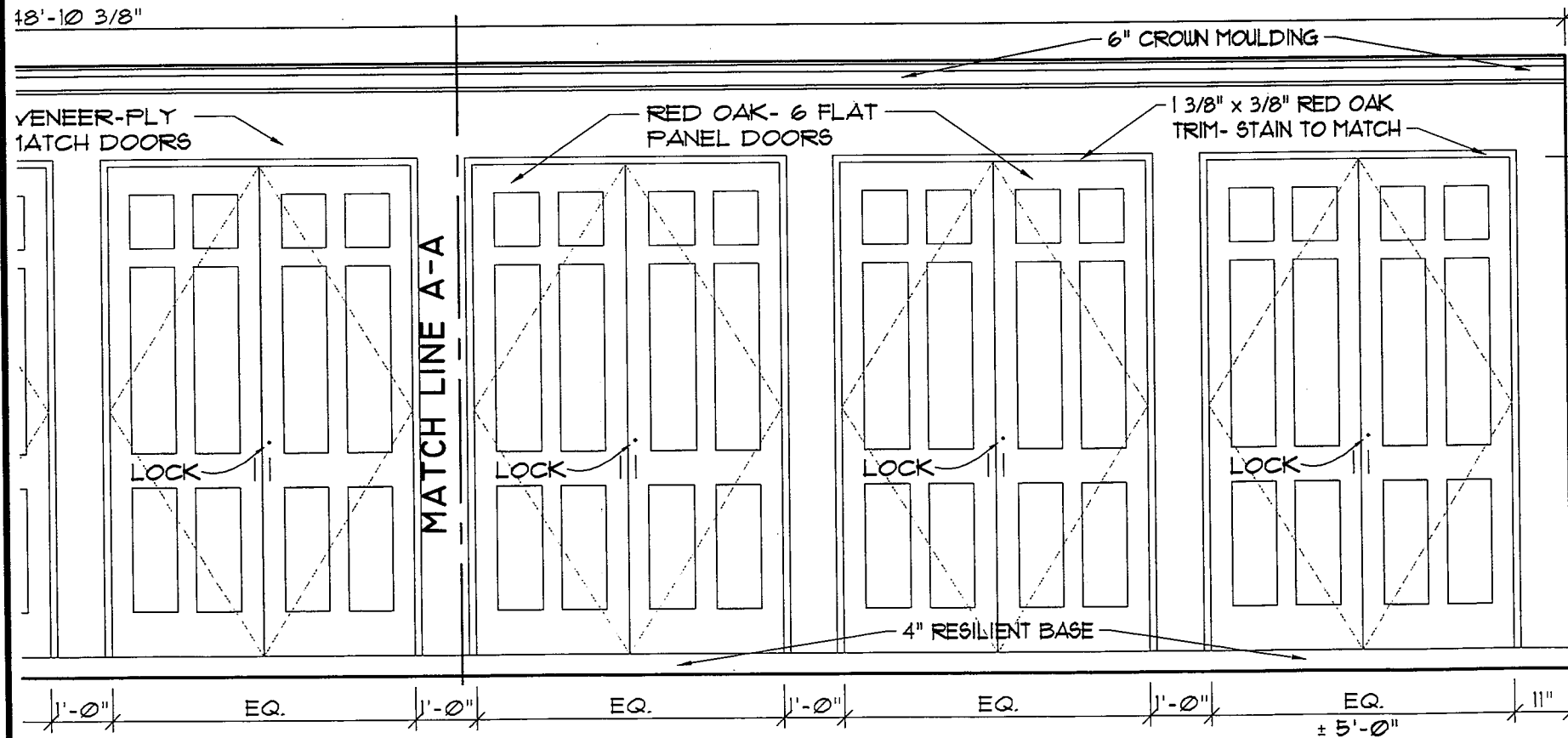
ST. BERNARD PARISH SCHOOL BOARD
CHALMETTE ELEMENTARY SCHOOL
78 WEST CHALMETTE CIR.
CHALMETTE, LOUISIANA

LACHIN OUBRE' & ASSOCIATES
A Professional Architectural Corporation
9000 W. Esplanade Ave.
Metairie, Louisiana 70002

48'-10 3/8"



48'-10 3/8"



ELEV. CLOS.-301

ASK-23 | ASK-23A SCALE: 3/8" = 1'-0"

CLOSET/CABINET CONSTRUCTION

1. EXTERIOR OF ALL CLOSETS TO BE 3/4" PLYWOOD W/ RED OAK VENEER STAIN & FINISH TO MATCH RECEPTION AREA COMPONENT FURNITURE (RM-104).
2. ALL NAILERS TO BE 3/4" PLY OR SOLID HARDWOOD.
3. ADJUSTABLE SHELVING TO BE RECESSED AND MADE BY KNAPP & YOGT.
4. EACH LEAF OF 30" x 96" x 1 3/4" DOOR TO HAVE FOUR HINGES.
5. EXACT PATTERN OF DOOR PANELS TO BE SUBMITTED TO ARCH. FOR REVIEW PRIOR TO PURCHASE & INSTALLATION.
6. ALL CABINET CONSTRUCTION (SHELVING & BACKS) TO BE PLYWOOD. NO OTHER MATERIALS ACCEPTED.

ELEV. @ CLOS.- 301

ASK-23 | ASK-23A SCALE: 3/8" = 1'-0"

SHEET No.

DRAWING TITLE
CASEWORK ELEVATION AT
AUDITORIUM - RM 301

ASK-23A

ST. BERNARD PARISH SCHOOL BOARD
CHALMETTE ELEMENTARY SCHOOL
70 WEST CHALMETTE CIRCLE
CHALMETTE, LOUISIANA

LACHIN OUBRE' & ASSOCIATES
A Professional Architectural Corporation
8000 W. Esplanade Ave.
Metairie, Louisiana 70002

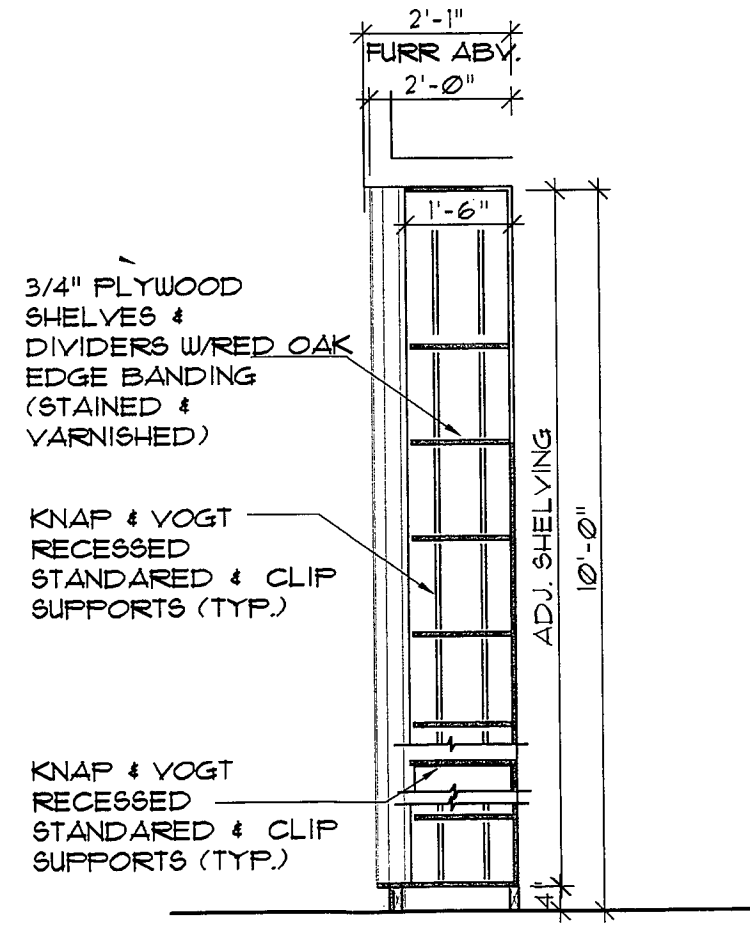
DATE 4/23/08

SCALE AS NOTED

DRAWN ABS

JOB 2805B

ASK-23 ASK-23B SCALE: 3/8" = 1'-0"



SEC. @ CLOS. - 301

DATE 4/23/09		DRAWING TITLE	
SCALE AS NOTED		CASEWORK SECTION AT	
DRAWN ABS		AUDITORIUM - RM 301	
JOB 2805B		SHEET No.	
		ASK-23B	
ST. BERNARD PARISH SCHOOL BOARD		DRAWING TITLE	
CHALMETTE ELEMENTARY SCHOOL		CASEWORK SECTION AT	
78 WEST CHALMETTE CIRCLE		AUDITORIUM - RM 301	
LACHIN OUBRE' & ASSOCIATES		SHEET No.	
A PROFESSIONAL ARCHITECTURAL CORPORATION		ASK-23B	
9000 W. ESPERANZA AVE.		DRAWING TITLE	
Metairie, Louisiana 70002		CASEWORK SECTION AT	
Scale 3/8" = 1'-0"		AUDITORIUM - RM 301	