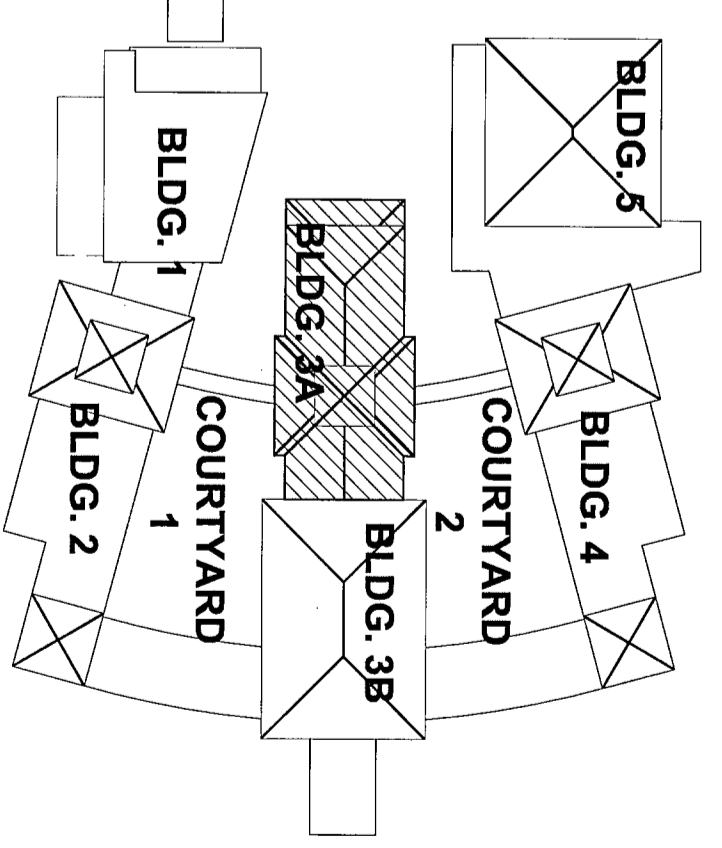
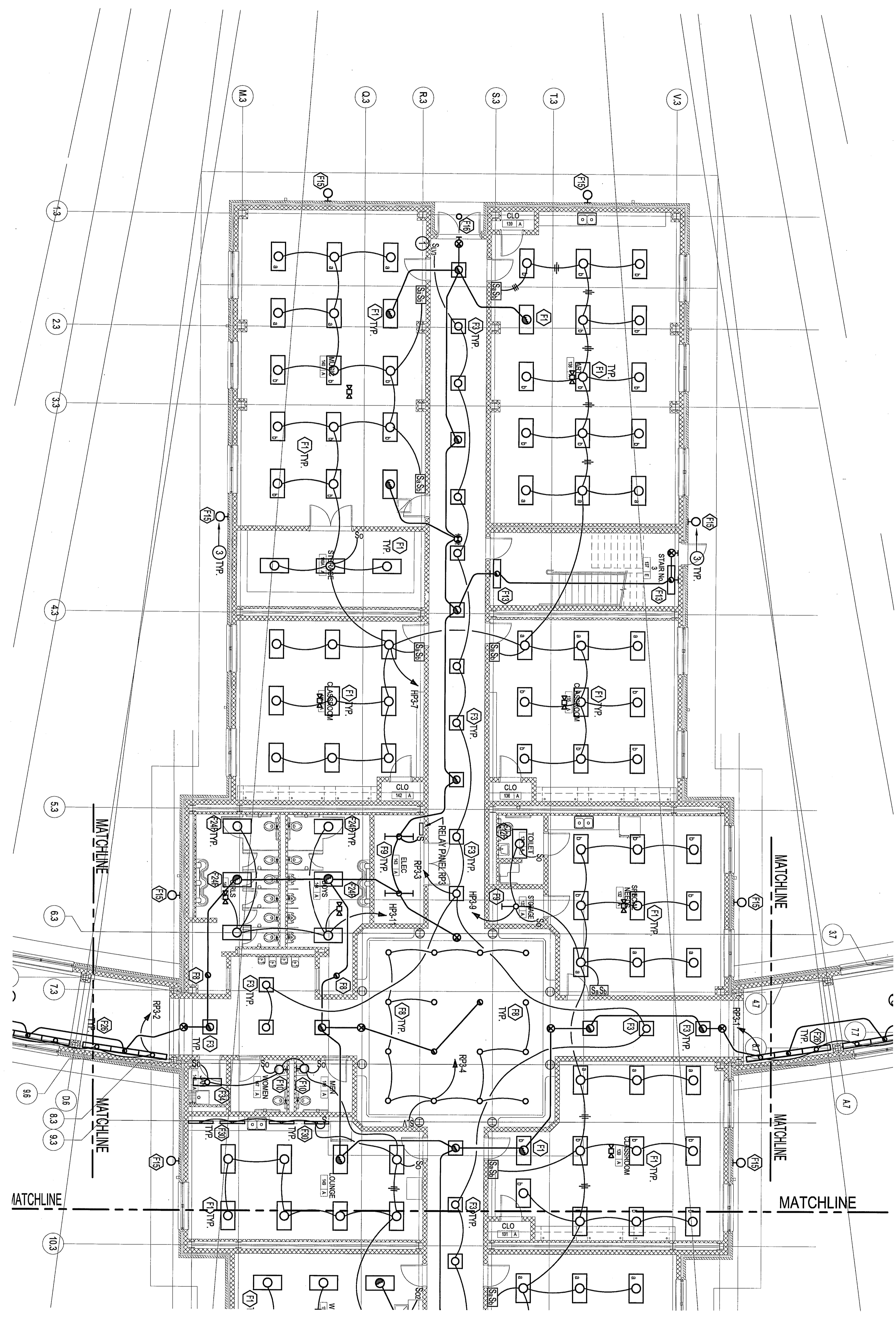


FIRST FLOOR PLAN - BLDG. #3A -
LIGHTING
SCALE: 1/8" = 1'-0"



- KEYED PLAN NOTES:**
- 1 LOW VOLTAGE OVERRIDE 3-WAY SWITCH TO TURN ON LIGHTS FOR MAXIMUM OF 2 HOURS.
 - 2 CONNECT INNER LAMP BALLAST TO ONE SWITCH, AND CONNECT OUTER LAMP BALLAST TO ANOTHER SWITCH.
 - 3 SEE DRAWING E02 FOR CIRCUITING OF BLDG MOUNTED LIGHTS. TYP.



**ST. BERNARD PARISH SCHOOL BOARD
CHALMETTE ELEMENTARY SCHOOL**
75 WEST CHALMETTE CIRCLE
CHALMETTE, LOUISIANA

LACHIN OUBRE & Associates
ARCHITECTS PLANNERS
PROJECT MANAGERS
A PROFESSIONAL CORPORATION
3000 West Esplanade Ave., Suite 302, Metairie, La. 70002
Ph: 504-835-8013 Fax: 504-835-8034

REVISION		DESCRIPTION
No.	DATE	
1	04/10/2009	BID/PERMIT SUBMISSION

S&E Klingemann
3275 Freret Street
Suite 200, Metairie, Louisiana 70002
Phone: (504) 979-0100
Fax: (504) 885-4038

KEY PLAN
N.T.S.

E1.2

PROJECT: ST. BERNARD PARISH SCHOOL BOARD
BLDG. #3 - LIGHTING
SHEET NO. 1 OF 1