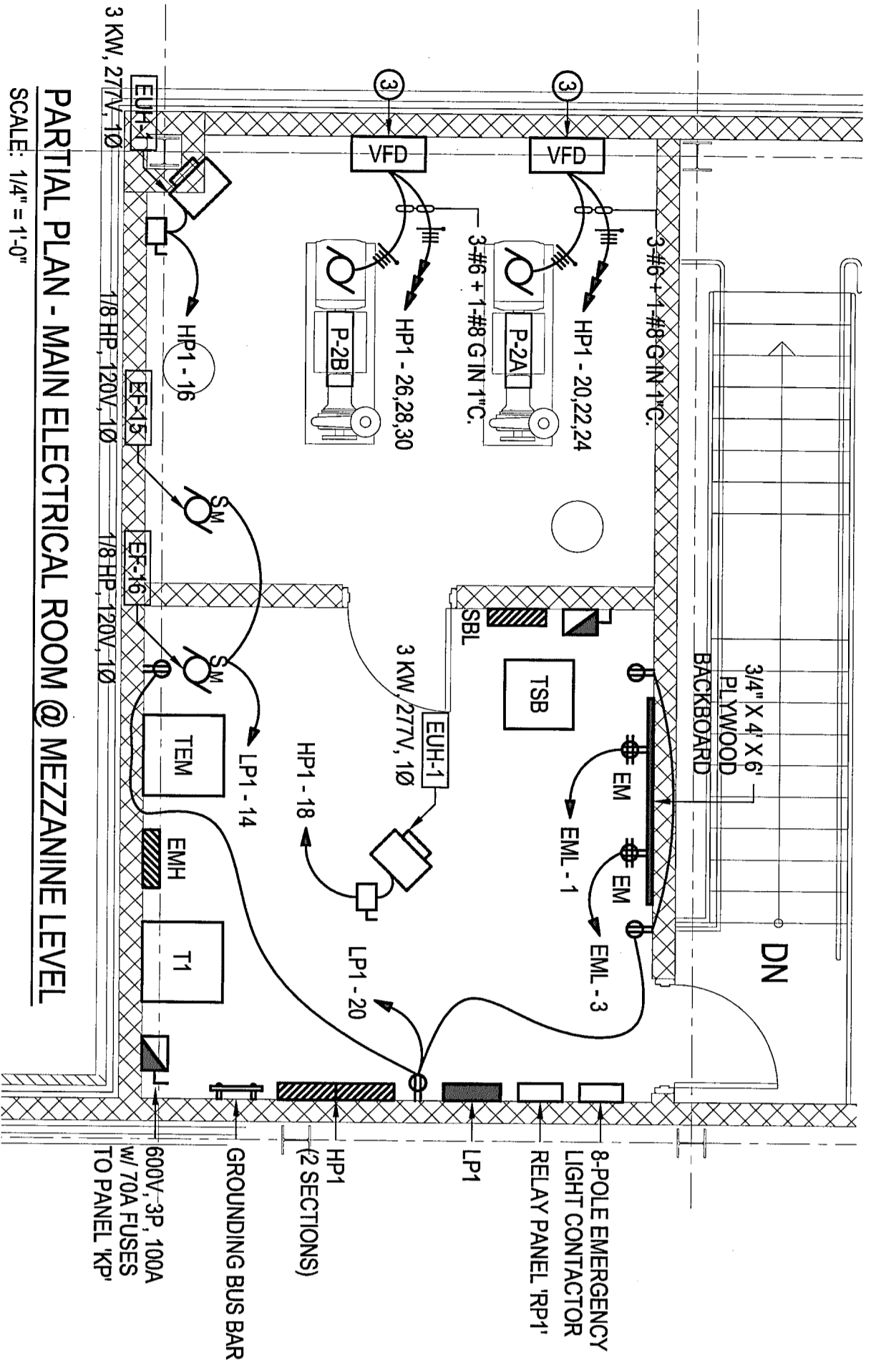
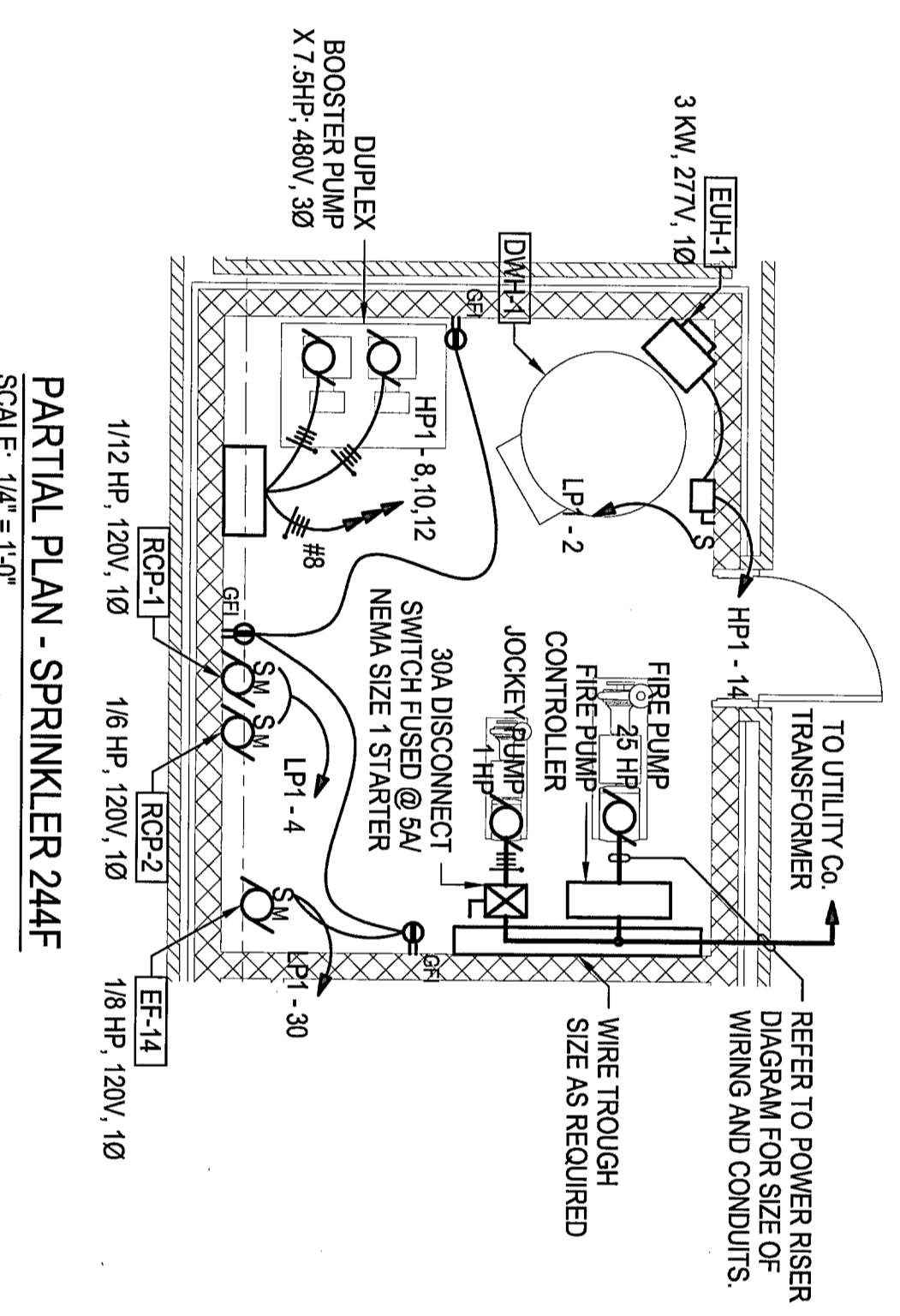


FIRST FLOOR PLAN
SCALE: 1/8" = 1'-0"

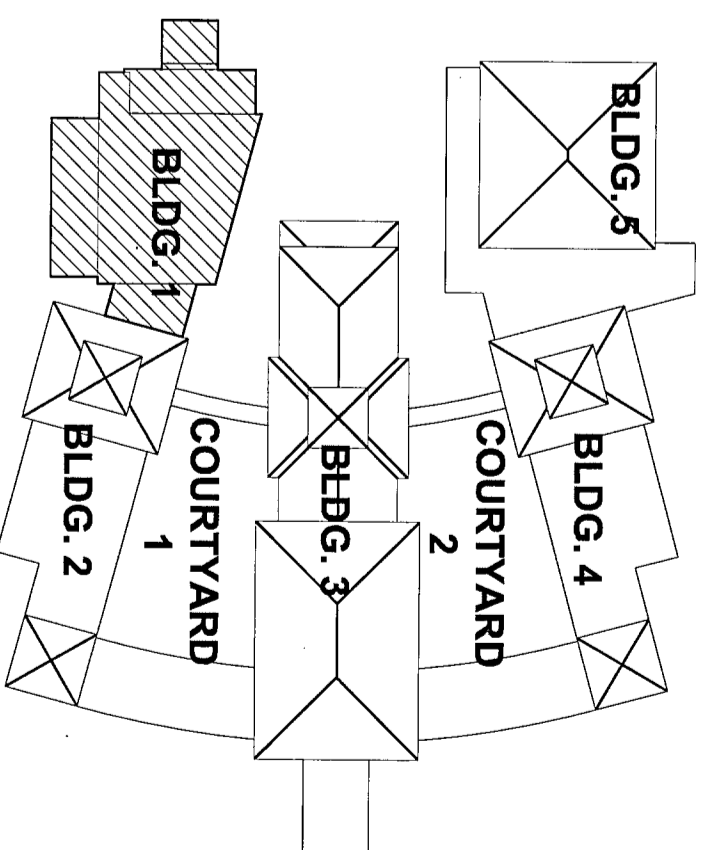


PARTIAL PLAN - MAIN ELECTRICAL ROOM @ MEZZANINE LEVEL
SCALE: 1/4" = 1'-0"



PARTIAL PLAN - SPRINKLER 244F
SCALE: 1/4" = 1'-0"

- KEYED PLAN NOTES:**
- 1 REFER TO POWER RISER DIAGRAM ON DRAWING #E2.1 FOR SIZE OF WIRING AND CONDUITS FOR SWITCHBOARD, GENERATOR, ATSS & CHILLERS.
 - 2 FOR CONNECTIONS TO HEAT TRACING. COORDINATE WITH HVAC CONTRACTOR FOR FINAL CONNECTIONS AND LOCATION.
 - 3 VFDs TO BE FURNISHED UNDER DIVISION 15.
 - 4 FOR CONNECTIONS TO INFRARED LAVATORY SYSTEM. COORDINATE FINAL LOCATION WITH DIVISION 15 CONTRACTOR PRIOR TO ROUGH-IN. MH-204 AFF-SWITCH FOR THE HANDICAP LIFT SHALL HAVE PROVISIONS FOR BEING LOCKED IN "OFF" POSITION.



KEY PLAN
NTS

NO.	DATE	REVISION	DESCRIPTION
01	04/10/2009	BID/FERRETY SUBMISSION	

LACHIN OUBRE & Associates
ARCHITECTS PLANNERS
PROJECT MANAGERS
A PROFESSIONAL CORPORATION
3000 West Esplanade Ave., Suite 302, Metairie, La. 70002
Ph: 504-835-8013 Fax: 504-835-8034

**ST. BERNARD PARISH SCHOOL BOARD
CHALMETTE ELEMENTARY SCHOOL**
75 WEST CHALMETTE CIRCLE
CHALMETTE, LOUISIANA

E2.6

NO. OF SHEETS: 1
SHEET NO.: 6
DATE: 04/10/09

OWNER: ST. BERNARD PARISH SCHOOL BOARD
PROJECT NO.: 2009-8
DRAWN BY: [Name]
CHECKED BY: [Name]
DATE: 04/10/09