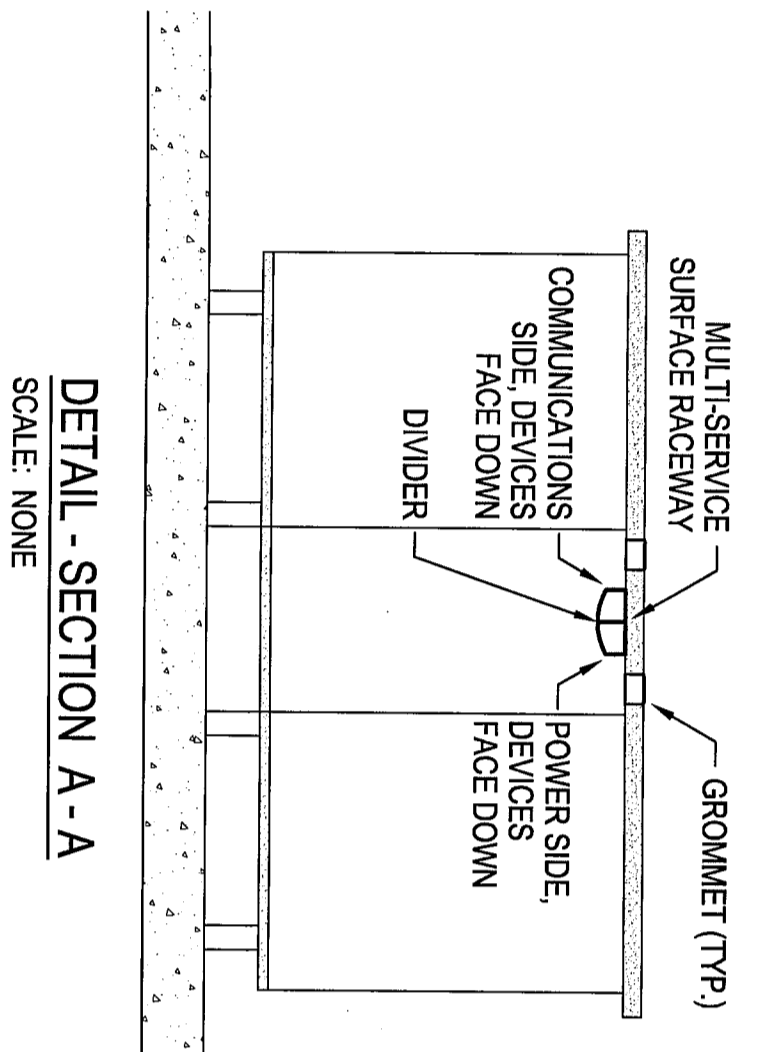
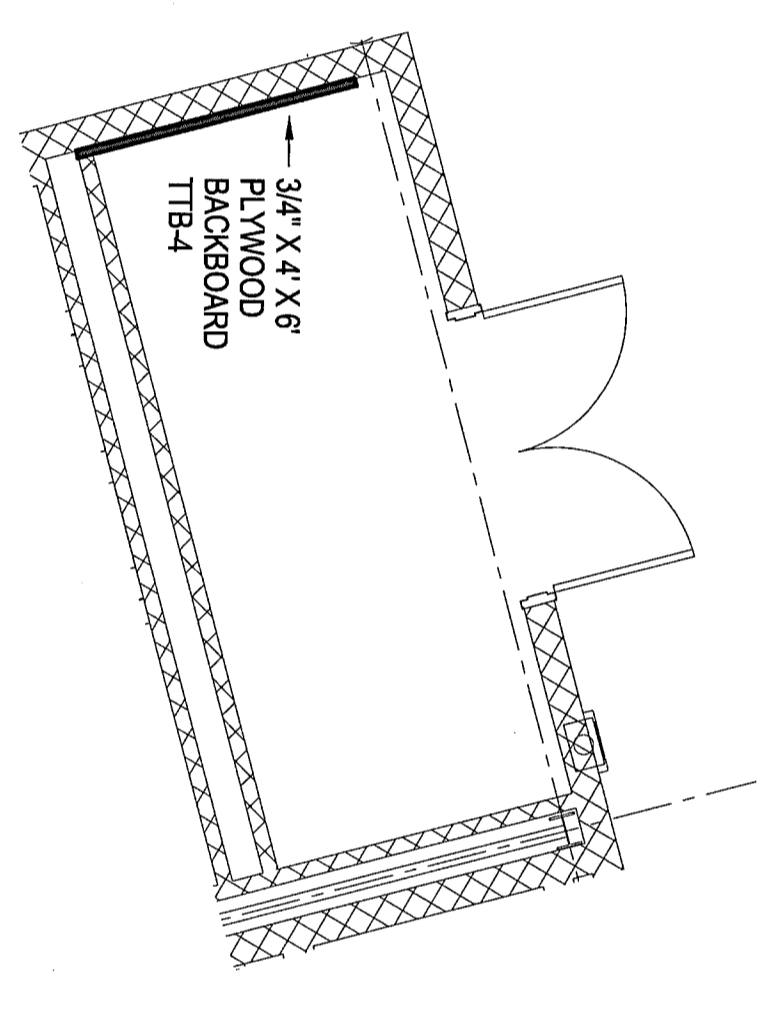




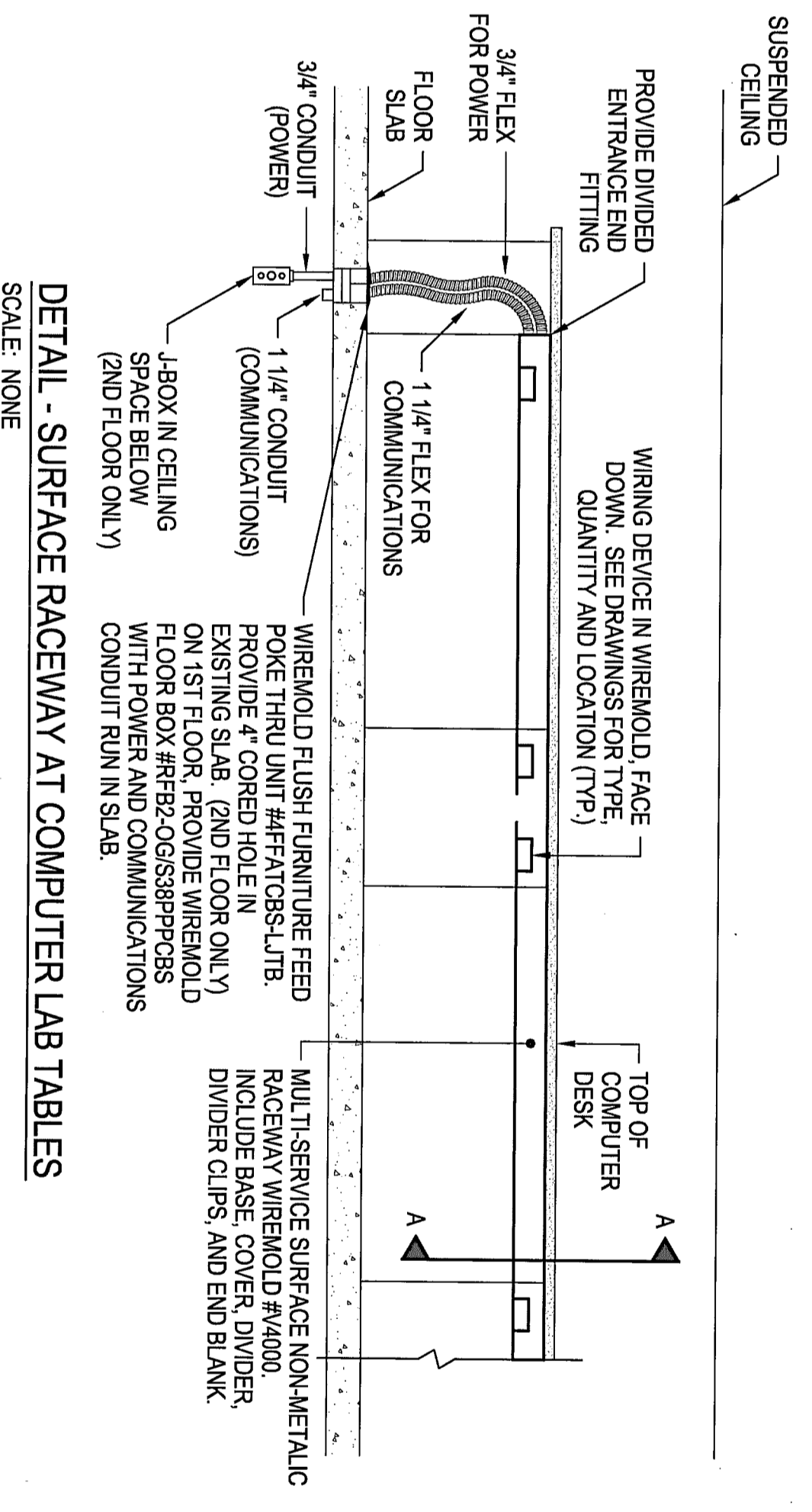
FIRST FLOOR PLAN
SCALE: 1/8" = 1'-0"



PARTIAL PLAN - (IDF-4)
ELEC 181F
SCALE: 1/4" = 1'-0"

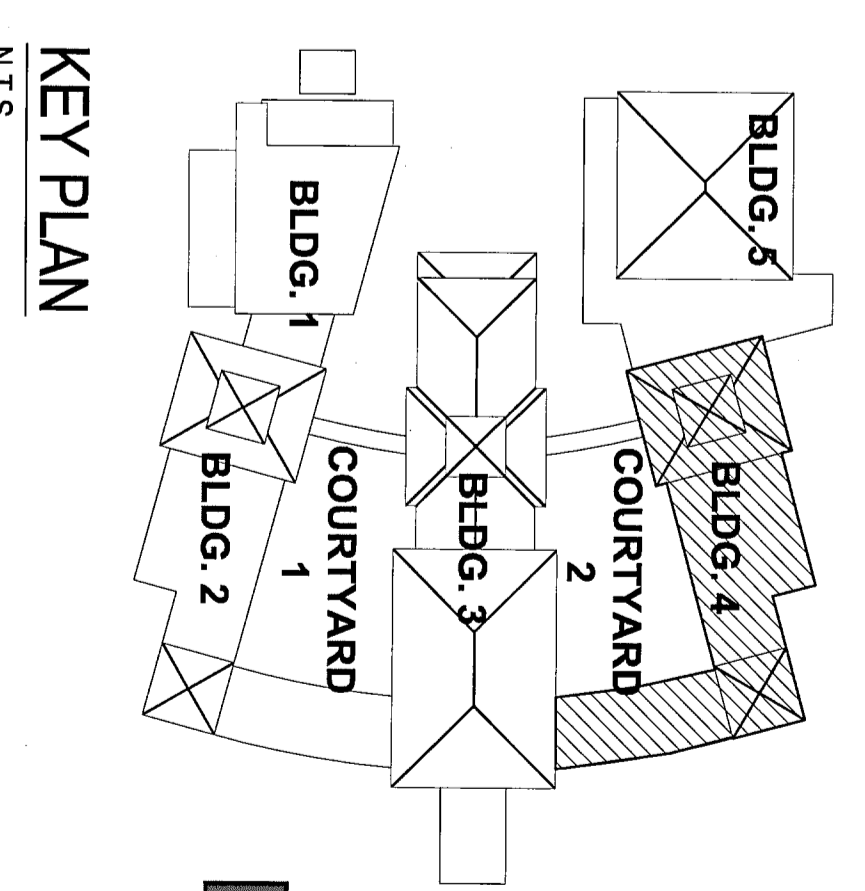


DETAIL - SECTION A-A
SCALE: NONE



DETAIL - SURFACE RACEWAY AT COMPUTER LAB TABLES
SCALE: NONE

- KEYED PLAN NOTES:**
- 1 FOR SMARTBOARD, SEE DETAIL ON DRAWING SHEET E3.1.
 - 2 TERMINATE TELEPHONE DROPS AND INTERCOM AT PUNCH BLOCKS TTB-44, 1ST FLOOR (INT. 4) (ELEC. 181A).
 - 3 WIREWOUND ON UNDERSIDE OF COMPUTER DESK WITH ISOLATED GROUND RECEPTACLES IN POWER CHANNEL AND RJ45 JACKS IN COMMUNICATIONS CHANNEL. SEE DETAIL ON DRAWING SHEET E3.1.
 - 4 SPECIAL SYSTEM WIRE BASKET TYPE CABLE TRAY; CAT6/PL CF84 SERIES OR EQUAL.
 - 5 WIREWOUND ON UNDERSIDE OF COMPUTER DESK.
 - 6 SEE DETAIL ON THIS DRAWING SHEET.
 - 7 FIRE RATED BATHWAY SYSTEM, WALL MOUNT ABOVE CEILING. EZ-PAINT #E2P-4333X.



KEY PLAN
N.T.S.

SNE KINGDOM
5222 Freret Street, Suite 200, Metairie, LA 70002
Phone: (504) 885-8013 Fax: (504) 885-8018
www.snekingdom.com

ST. BERNARD PARISH SCHOOL BOARD
CHALMETTE ELEMENTARY SCHOOL
75 WEST CHALMETTE CIRCLE
CHALMETTE, LOUISIANA

REVISION		
NO.	DATE	DESCRIPTION

LACHIN OUBRE & Associates
ARCHITECTS PLANNERS
PROJECT MANAGERS
A PROFESSIONAL CORPORATION
3000 West Esplanade Ave., Suite 302, Metairie, La. 70002
Ph: 504-835-8013 Fax: 504-835-8034

E3.3
NO. 1000000000
DATE 04/10/2009
PROJECT NO. 2009-3
SHEET NO. 1000000000
SHEET TOTAL 1000000000