

PANEL NEW 30 PANEL P-6
LOCATION: URSHINS SOUND AND LIGHT ROOM
FEEDER SOURCE: CLECO

VOLTAGE: 120/240V, 400A, 3Ø, 4W
ENCLOSURE: PANELBOARD, 400A, NIB,
W/OUTLET AND BAR, 14,000 AAC

CIR. NO.	THIRD WIRE NO.	LOAD DESCRIPTION	BRK/TYPE	AMP FEEDER (VA)	LOAD (VA)	LOCATION	THIRD WIRE NO.	CIR. NO.
1	49	NEW AIR CONDENSING UNIT	9107	1400A	30	NEW AIR HANDLING UNIT	49	2
3	51	NEW AIR CONDENSING UNIT	9107	1400A	30	NEW AIR HANDLING UNIT	51	4
5	53	NEW AIR CONDENSING UNIT	9107	1400A	30	NEW AIR HANDLING UNIT	53	6
7	55	NEW AIR CONDENSING UNIT	9107	1400A	30	NEW AIR HANDLING UNIT	55	8
9	57	NEW AIR CONDENSING UNIT	9107	1400A	30	NEW AIR HANDLING UNIT	57	10
11	59	NEW AIR CONDENSING UNIT	9107	1400A	30	NEW AIR HANDLING UNIT	59	12
13	61	NEW AIR CONDENSING UNIT	9107	1400A	30	NEW AIR HANDLING UNIT	61	14
15	63	NEW AIR CONDENSING UNIT	9107	1400A	30	NEW AIR HANDLING UNIT	63	16
17	65	NEW AIR CONDENSING UNIT	9107	1400A	30	NEW AIR HANDLING UNIT	65	18
19	67	NEW AIR CONDENSING UNIT	9107	1400A	30	NEW AIR HANDLING UNIT	67	20
21	69	NEW AIR CONDENSING UNIT	9107	1400A	30	NEW AIR HANDLING UNIT	69	22
23	71	NEW AIR CONDENSING UNIT	9107	1400A	30	NEW AIR HANDLING UNIT	71	24
25	73	NEW AIR CONDENSING UNIT	9107	1400A	30	NEW AIR HANDLING UNIT	73	26
27	75	NEW AIR CONDENSING UNIT	9107	1400A	30	NEW AIR HANDLING UNIT	75	28
29	77	NEW AIR CONDENSING UNIT	9107	1400A	30	NEW AIR HANDLING UNIT	77	30
TOTAL CONNECTED LOAD (VA)=42,321			TOTAL CONNECTED LOAD (VA)=42,321			TOTAL CONNECTED LOAD (VA)=42,321		
MINIMUM WIRE SIZE (AWG)			MINIMUM WIRE SIZE (AWG)			MINIMUM WIRE SIZE (AWG)		

PANEL NEW 10 PANEL P-7
LOCATION: NEW BUILDING
FEEDER SOURCE: 400A PANEL

VOLTAGE: 120/240V, 100A, 1Ø, 3Ø
ENCLOSURE: SURFACE MOUNTED VIL, W/OUTLET AND BAR, 10,000 AAC

CIR. NO.	THIRD WIRE NO.	LOAD DESCRIPTION	BRK/TYPE	AMP FEEDER (VA)	LOAD (VA)	LOCATION	THIRD WIRE NO.	CIR. NO.
1	12	RECEPTACLES IN THE CON. CABINET	20	1350	20	RECEPTACLES IN THE CON. CABINET	12	2
3	14	RECEPTACLES IN THE CON. CABINET	20	1350	20	RECEPTACLES IN THE CON. CABINET	14	4
5	16	RECEPTACLES IN THE CON. CABINET	20	1350	20	RECEPTACLES IN THE CON. CABINET	16	6
7	18	RECEPTACLES IN THE CON. CABINET	20	1350	20	RECEPTACLES IN THE CON. CABINET	18	8
9	20	RECEPTACLES IN THE CON. CABINET	20	1350	20	RECEPTACLES IN THE CON. CABINET	20	10
11	22	RECEPTACLES IN THE CON. CABINET	20	1350	20	RECEPTACLES IN THE CON. CABINET	22	12
13	24	RECEPTACLES IN THE CON. CABINET	20	1350	20	RECEPTACLES IN THE CON. CABINET	24	14
15	26	RECEPTACLES IN THE CON. CABINET	20	1350	20	RECEPTACLES IN THE CON. CABINET	26	16
TOTAL CONNECTED LOAD (VA)=10,125			TOTAL CONNECTED LOAD (VA)=10,125			TOTAL CONNECTED LOAD (VA)=10,125		
MINIMUM WIRE SIZE (AWG)			MINIMUM WIRE SIZE (AWG)			MINIMUM WIRE SIZE (AWG)		

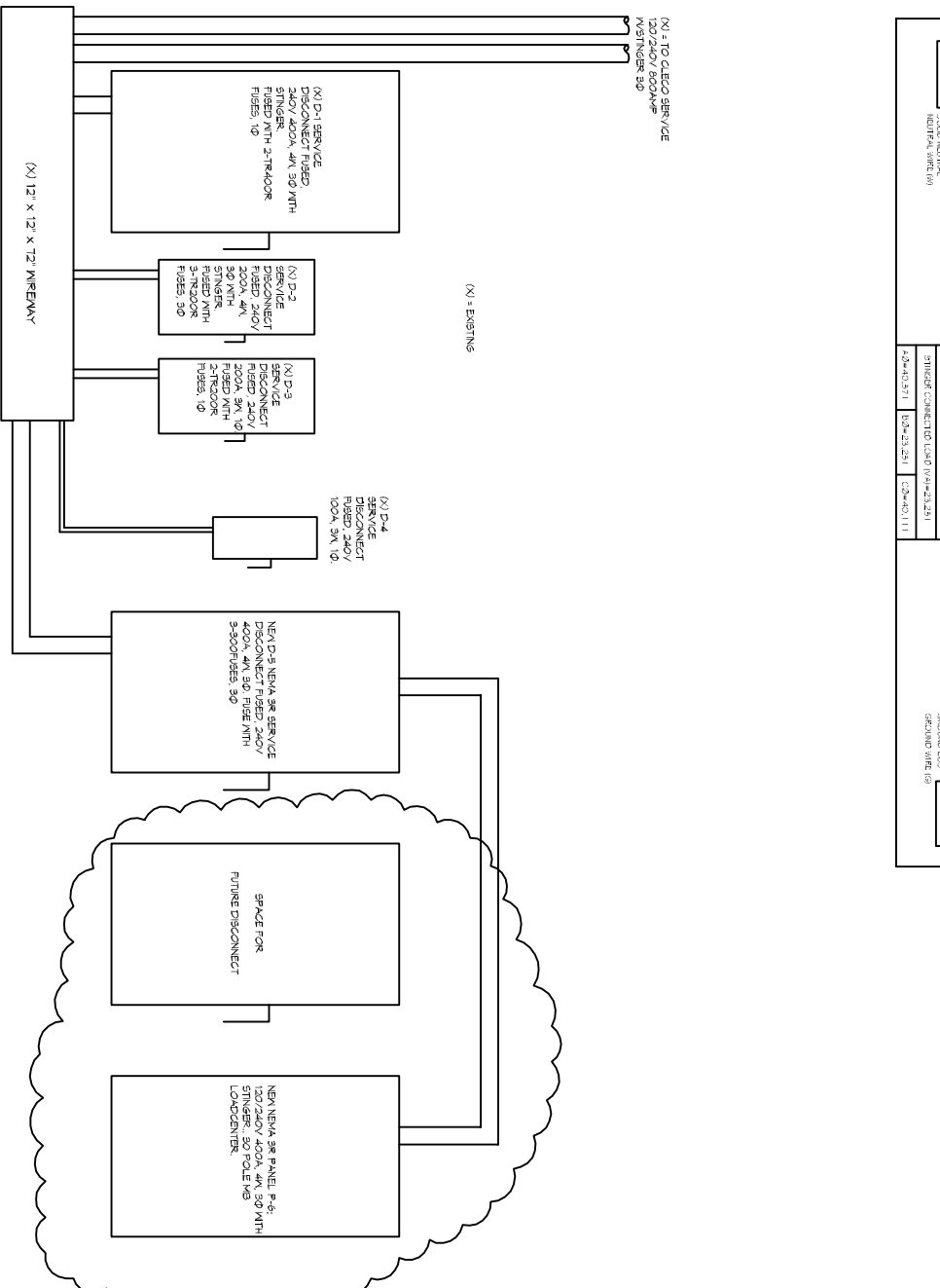
PANEL EXISTING 10 PANEL P-5
LOCATION: URSHINS SOUND AND LIGHT ROOM
FEEDER SOURCE: 400A PANEL

VOLTAGE: 120/240V, 100A, 1Ø, 3Ø
ENCLOSURE: SURFACE MOUNTED VIL, W/OUTLET AND BAR

CIR. NO.	THIRD WIRE NO.	LOAD DESCRIPTION	BRK/TYPE	AMP FEEDER (VA)	LOAD (VA)	LOCATION	THIRD WIRE NO.	CIR. NO.
1	1	SPIN LIGHT RECEPTACLES	20	1100	2	SPIN LIGHT RECEPTACLES	1	2
3	3	SPIN LIGHT RECEPTACLES	20	1100	2	SPIN LIGHT RECEPTACLES	3	4
5	5	SPIN LIGHT RECEPTACLES	20	1100	2	SPIN LIGHT RECEPTACLES	5	6
7	7	SPIN LIGHT RECEPTACLES	20	1100	2	SPIN LIGHT RECEPTACLES	7	8
9	9	SPIN LIGHT RECEPTACLES	20	1100	2	SPIN LIGHT RECEPTACLES	9	10
11	11	SPIN LIGHT RECEPTACLES	20	1100	2	SPIN LIGHT RECEPTACLES	11	12
13	13	SPIN LIGHT RECEPTACLES	20	1100	2	SPIN LIGHT RECEPTACLES	13	14
15	15	SPIN LIGHT RECEPTACLES	20	1100	2	SPIN LIGHT RECEPTACLES	15	16
TOTAL CONNECTED LOAD (VA)=22,000			TOTAL CONNECTED LOAD (VA)=22,000			TOTAL CONNECTED LOAD (VA)=22,000		
MINIMUM WIRE SIZE (AWG)			MINIMUM WIRE SIZE (AWG)			MINIMUM WIRE SIZE (AWG)		

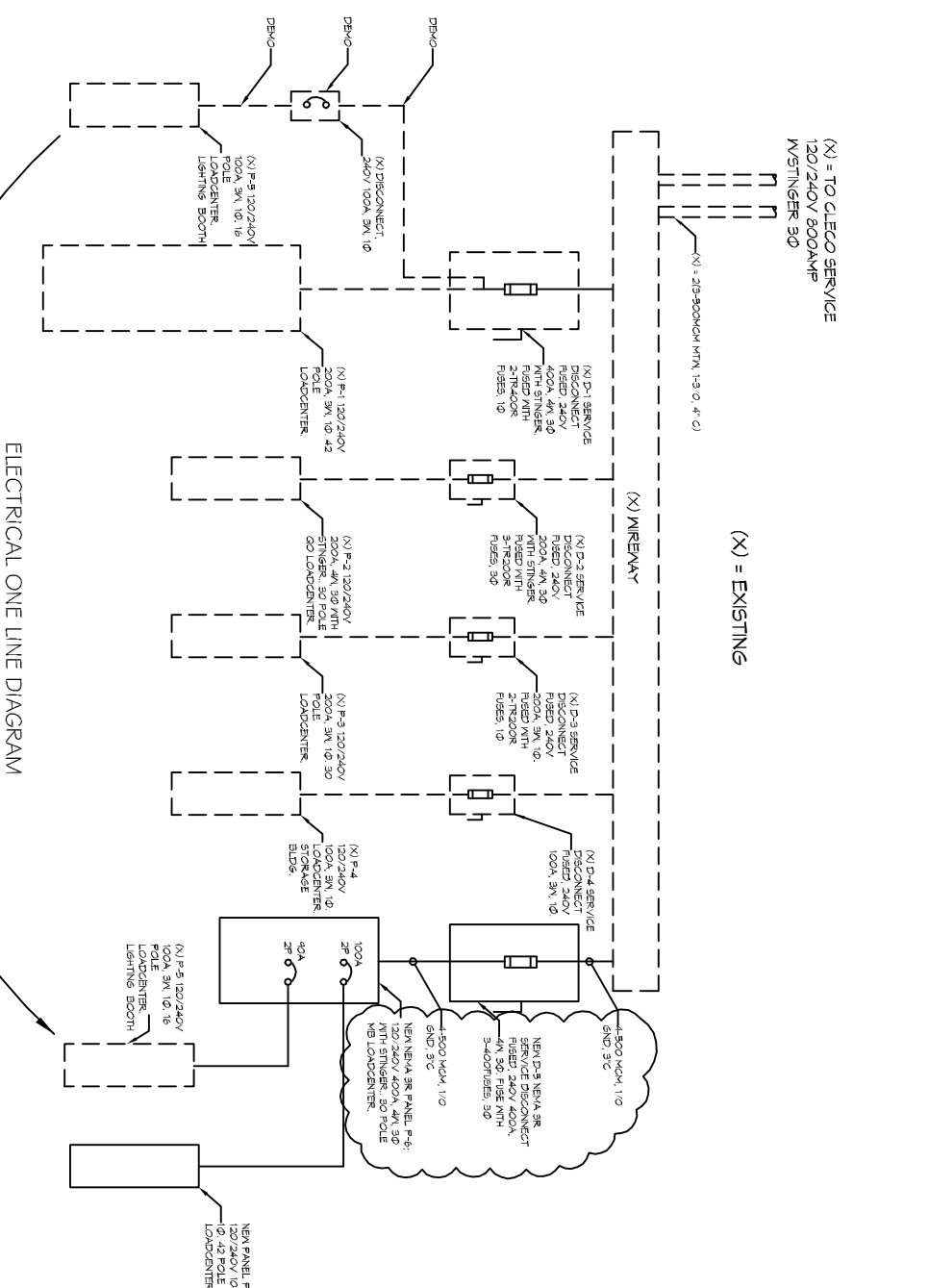
ELECTRICAL PANEL SCHEDULES

SCALE: N.T.S.



ELECTRICAL ELEVATION

SCALE: N.T.S.



ELECTRICAL ONE LINE DIAGRAM

SCALE: N.T.S.

RE-TERMINATE

In joint venture with:

DAMMON ENGINEERING INC.
Architects & Engineers

Chief Architect: Kevin J. Kirchen, NCARB
Chief Engineer: Brian Atchey, PE
504 Old Spanish Trail
Slidell, LA 70458

www.dammonengineering.com
dammoneng@slidell.net
PH: 985.543.5831
F: 985.541.2929

DATE: 9/19/14
SCALE: NOTED
JOB NO. 108

DESIGN: E-3

Slidell Little Theatre
2024 Nellie Drive
Slidell, Louisiana 70458

FRANK E. GERARVE, JR., ARCHITECT, L.L.C.
A Professional Architectural Limited Liability Company
Designers Planners Engineers

9108 CHRETIEN POINT PLACE, RIVER RIDGE, LOUISIANA 70123
Telephone: (504) 737-2821 Facsimile: (504) 737-2822

These documents are and shall remain the property of the client and shall not be reproduced, copied, or otherwise used without the written consent of the architect. The removal of these documents or their use for any purpose other than that intended shall be a violation of the architect's seal or stamp from these documents unless otherwise provided by written approval of the architect, dated and signed by the architect. Chapter 3, 1983, and such persons shall be subject to the penalties fines and or imprisonment as stated by Louisiana Law.

REVISION	BY
9/22/14	JML