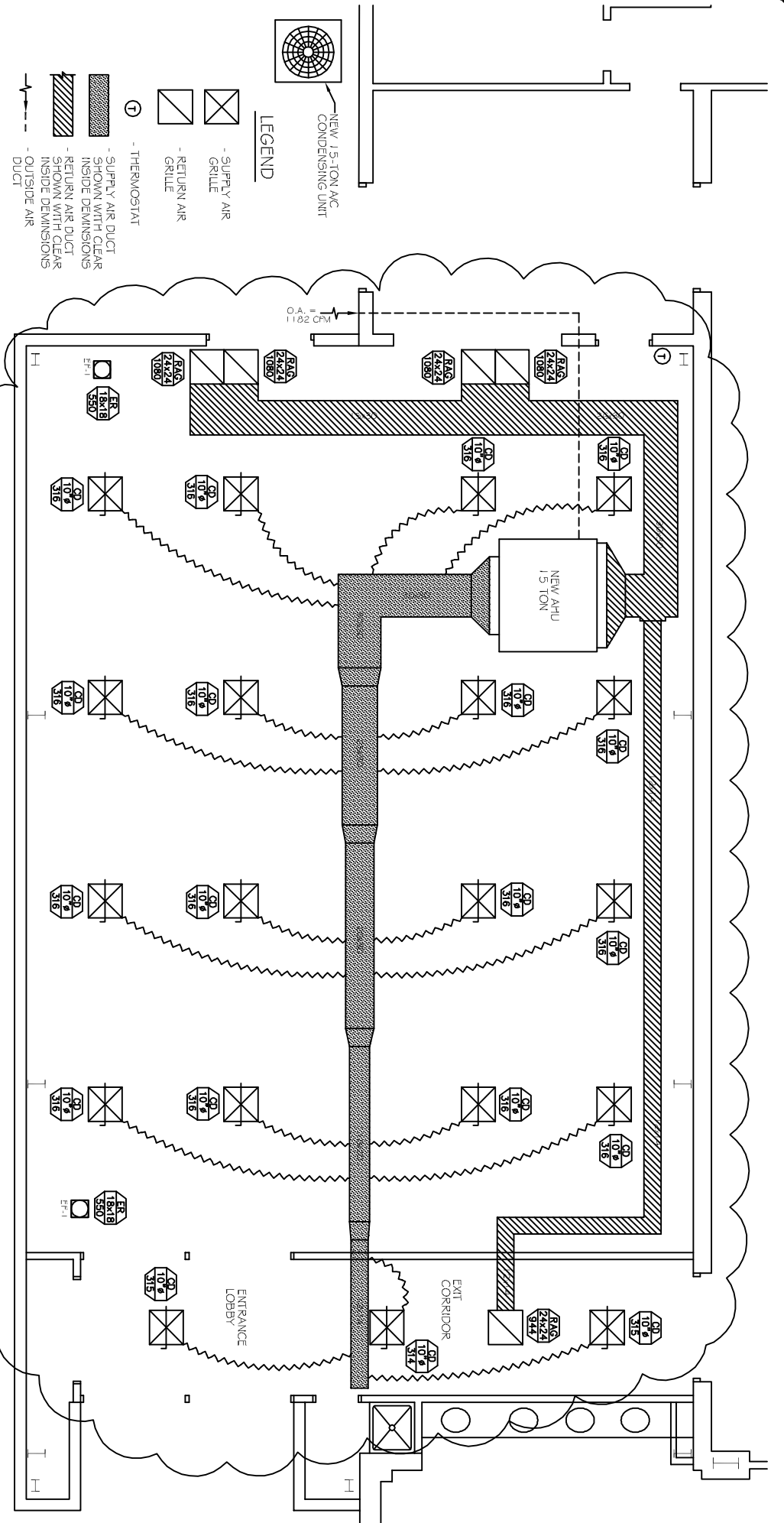


MECHANICAL NOTES

- CONTRACTOR SHALL VERIFY THAT ALL EQUIPMENT, AS SHOWN ON THESE DRAWINGS, WILL NOT CONFLICT WITH ANY DRAINING, SCOTTLIES, JOISTS, ETC.
- ALL ROOF-MOUNTED EQUIPMENT AND PENETRATIONS SHALL BE FLASHED A MINIMUM OF 12" ABOVE THE ROOF-VA ROOF CURBS AND PRE-SEALS. PROVIDE EARLY SUPPLY OF PRE-SEALS FOR ELECTRICAL PENETRATIONS.
- ALL OUTSIDE AIR INTAKES SHALL BE A MINIMUM OF 10' OF ROOF ANY EXHAUST FAN OR HANDLING UNIT. PRESS AIR SHUTTERS SHALL BE INSTALLED IN ROOF OR EXHAUST FAN DUCT SPLITTER WITH A CONTROL BACKLASH TO SHUT WHEN SYSTEM IS NOT RUNNING.
- MECHANICAL PENETRATION THROUGH ROOF SHALL BE FLASHED AND WEATHERED TO MATCH THE ROOF. CONTRACTOR TO VERIFY WITH OWNER LOCATIONS OF JOISTS, DAMPERS, REGISTERES, ETC. REFER TO SEPARATE ENGINEERING PLAN FOR FINAL GRILLE AND DIFFUSER LOCATIONS AND COORDINATE AS REQUIRED.
- REFER TO STRUCTURAL DRAWINGS TO COORDINATE LOCATIONS & MOUNTING OF MECHANICAL EQUIPMENT.
- THE MECHANICAL CONTRACTOR SHALL BE RESPONSIBLE FOR ADJUSTING ALL WEATHERING ON EQUIPMENT, WHICH WILL BE THESE FLASHINGS BY THE MECHANICAL CONTRACTOR. CONTRACTOR TO VERIFY WITH OWNER AS TO WHETHER FLASHINGS SHALL BE INSTALLED COMPLETELY SEPARATE.
- CONDENSATE & OVERFLOW DRAIN LINES SHALL BE PVC 3/4" AND SHALL BE INSTALLED COMPLETELY SEPARATE. DRAINING TO BE RUN TO FLOW VESSELS WITHIN THE FEET OF AIR HANDLING UNIT.
- PROVIDE VIBRATION ISOLATION DEVICES AND FLEXIBLE CONNECTIONS TO ALL MOVING MACHINERY.
- DUCTWORK TO BE GALVANIZED SHEET METAL PER SWAGA STANDARDS. LINE WITH NEOPRENE COATED 1/2" 1.5 POUNDS PER CUBIC FOOT DUCT INSULATION.
- ROUND FLEXIBLE DUCT TO BE UL-181, CLASS I, AIR DUCT MATERIALS AND BE INSULATED WITH A MINIMUM R-VALUE OF 6.
- ALL DUCT DIMENSIONS SHOWN ON DRAWINGS ARE CLEAR INSIDE DIMENSIONS. DUCTS SHALL BE SIZED TO UNIT MAIN DUCTS TO 1000 FPM & SECONDARY DUCTS TO 800 FPM.
- ALL SUPPLY AIR VENTS SHALL BE EQUIPPED WITH AIR CONTROL DAMPERS.
- THE CONTRACTOR SHALL PROVIDE COVERTER INFORMATION AND COOPERATION TO THE OTHER CONTRACTORS AND TRADES AS REQUIRED FOR COORDINATION AND COORDINATION OF THE COMPLETE PROJECT.
- THIS CONTRACTOR SHALL COORDINATE WITH THE GENERAL CONTRACTOR AND ALL OTHER TRADES FOR ALL REQUIRED OPENINGS IN FOUNDATIONS, FLOORS, WALLS AND ROOF. CUTTING AND PATCHING SHALL BE FIELD TO A MINIMUM.
- TEMP. SENSORS SHALL BE LOCATED GENERALLY AS SHOWN BUT THEIR EXACT LOCATION SHALL BE FIELD TO A MINIMUM. ALL THERMOSTATS SHALL BE AUTOMATICALLY RESET WITH FLEXIBLE CONNECTIONS TO ALL MOVING MACHINERY.
- ALL AIR HANDLING SYSTEMS TO BE BALANCED TO ASSURE PROPER AIR FLOWS PER PANS.
- CONTRACTOR TO INSULATE PACKAGED OF ALL DIFFUSERS WITH 2" MINIMUM OWENS-CORNING FIBERGLASS ALL SERVICE PACKED DUCT WORK.
- CONTRACTOR TO FABRICATE ALL DUCTWORK TRANSITIONS AS REQUIRED TO ATTACH DUCTWORK TO HVAC EQUIPMENT AND AIR DEVICES.
- ALL ROUND DUCT AND FLEX DUCT RUN OUTS SHALL BE THE SAME DIAMETER AS DIFFUSER NECK UNLESS NOTED OTHERWISE.
- PROVIDE RECTANGULAR TO ROUND TRANSITIONS FOR ALL DIFFUSERS AS NEEDED.
- VERIFY EXISTING CONDITIONS IN FIELD PRIOR TO BEGINNING WORK.
- PROVIDE AND INSTALL WATER PROOF GRILLE VENT IN PROPER ROOF LOCATION FOR HANDLING PROTECT DRYOUT.
- COORDINATE CEILING AIR DEVICE LOCATIONS WITH LIGHTING PLAN AND ARCHITECT'S REFLECTED CEILING PLAN.
- RETURN DUCTWORK SHALL BE LINED WITH 1" INCH ACROLYLIC INSULATION.
- IN ALL SYSTEMS OVER 2,000 CFM AND LESS THAN 15,000 CFM, SMOKE DETECTORS SHALL BE INSTALLED IN ACCORDANCE WITH NFPA 90A. IN THE SUPPLY DUCT DOWNSTREAM OF THE AIR HANDLING UNIT AND ALL INTAKES TO AUTOMATICALLY STOP THE FAN. IN ALL SYSTEMS UNDER 2,000 CFM PROVIDE UL LISTED 125 F FRESH-AIR IN RETURN AIR OF EACH SYSTEM TO SHUT-DOWN FAN IN THE EVENT OF FIRE.
- PROVIDE AND INSTALL SMOKE DETECTORS AS APPROVED BY LOCAL A.U./J.S. PLACE NEAR RA AND SA OPENINGS OF AHU AND PROVIDE WITH ACCESS PANEL, WIRING BY ELECTRICAL CONTRACTOR.
- PROVIDE UL RATED FIRE DAMPERS WHERE REQUIRED AT ALL DUCT PENETRATIONS OF FIRE-RATED ASSEMBLIES AND WHERE REQUIRED BY CODE, INCLUDING OUTSIDE AIR INTAKES.
- PROVIDE AND INSTALL WATER PROOF GRILLE VENT ON ROOF FOR TOILET EXHAUST.
- REFERENT LINES SHALL BE SIZED BY UNIT MANUFACTURER AND INSTALLED ACCORDING TO MANUFACTURER'S INSTALLATIONS.
- INSTALL FIRE DAMPER WHERE S.A. AND R.A. DUCTS PENETRATE 1" R.C. CONSTRUCTION.
- ALL ELECTRICAL, MECHANICAL AND PLUMBING PENETRATING FIRE PARTITIONS SHALL BE FIRE CAULKED. PENETRATIONS THROUGH RATED CONSTRUCTION SHALL BE SEALED WITH A MATERIAL CAPABLE OF PREVENTING THE PASSAGE OF FLAMES AND TO GASES WHEN TESTED IN ACCORDANCE WITH ASTM E-814.

MECHANICAL PLAN

SCALE: 1/4"=1'-0"



AIR DEVICE SCHEDULE

MARK	DESCRIPTION	BASES OR DESIGN	REMARKS
CD	CEILING DIFFUSER	ROUND STEEL 3" FOR 24"x24" UN-4A MODEL, C-1 WHITE FINISH, ALL NUMBERS COINT. FINISH	
SR	EXHAUST RESISTOR	ROUND STEEL 1" FOR SURFACE MOUNT, C-1 WHITE FINISH, ALL NUMBERS COINT. FINISH	
GR	GRILLE	ROUND STEEL 3" FOR 24"x24" UN-4A MODEL, C-1 WHITE FINISH, ALL NUMBERS COINT. FINISH	

1) TYPICAL PARTS FOR CEILING DIFFUSERS AND DAMPERS OTHER THAN INDICATED
 2) PROVIDE PLASTER FINISH FOR UN-4A DEVICES IN C-1 BOARD JOISTS
 3) PROVIDE FINISH FOR ALL EXHAUST RESISTORS AND RETURN AIR GRILLES

AHU UNIT SCHEDULE

TOTAL	CFM	O.A.	TRAIL	MECHANICAL	GRF	REMARKS
TOTAL	120,000	300	15	15	15	NOTE: ALL A.C. TO BE SEPT SYSTEM. FVAG (FRANK) OR EQUAL THIS SYSTEM REQUIRED TO CONTROL 2 EXHAUST PANS.
NEW AC #1	120,000	300	15	15	15	

FAN SCHEDULE

MARK	AREA SERVED	CFM	1.5" P. MOTOR DATA	CONTROLLED BY	BASIS OF DESIGN	REMARKS
F#-1	AUDITORIUM	600	1/10 1550 20V/60	AHU	ASCE FAN CO	

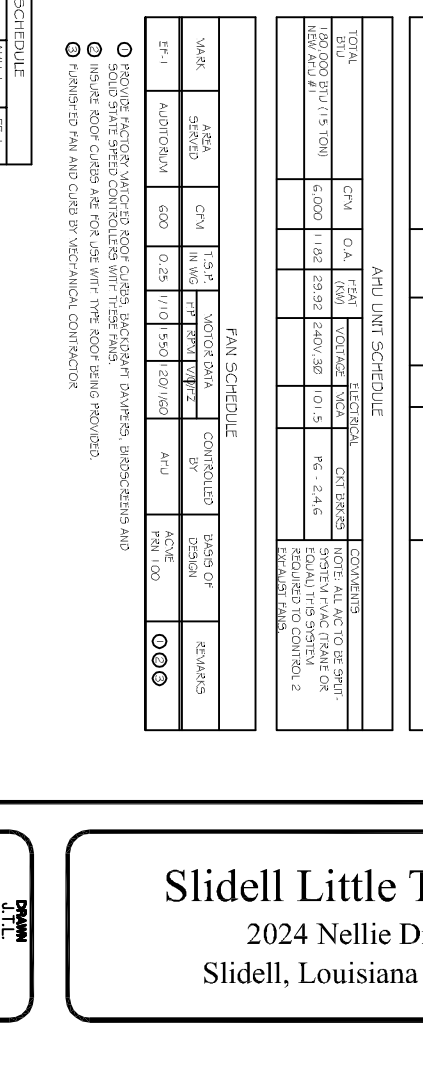
1) PROVIDE FACTORY WATERTIGHT ROOF CURBS, BACKSIGHT DAMPERS, BIRDSCREENS AND SOLID STATE SPEED CONTROLLERS WITH THESE FANS.
 2) INSURE ROOF CURBS ARE FOR USE WITH THE ROOF DRAIN PROVIDED.
 3) FURNISH FAN AND CURB BY MECHANICAL CONTRACTOR

AIR BALANCE SCHEDULE

MARK	CFM	SP. I
OUTSIDE AIR FLOW (CFM)	1122	
RETURN AIR FLOW (CFM)	481.8	
SUPPLY AIR FLOW (CFM)	6000	
EXHAUST AIR FLOW (CFM)	550	
BUILDING PRESSURE (CFM)	1122	550
QUANTITIES	2	
TOTAL PRESSURIZATIONS	1122	1100
RESULTING BUILDING PRESSURIZATION (CFM) +82		

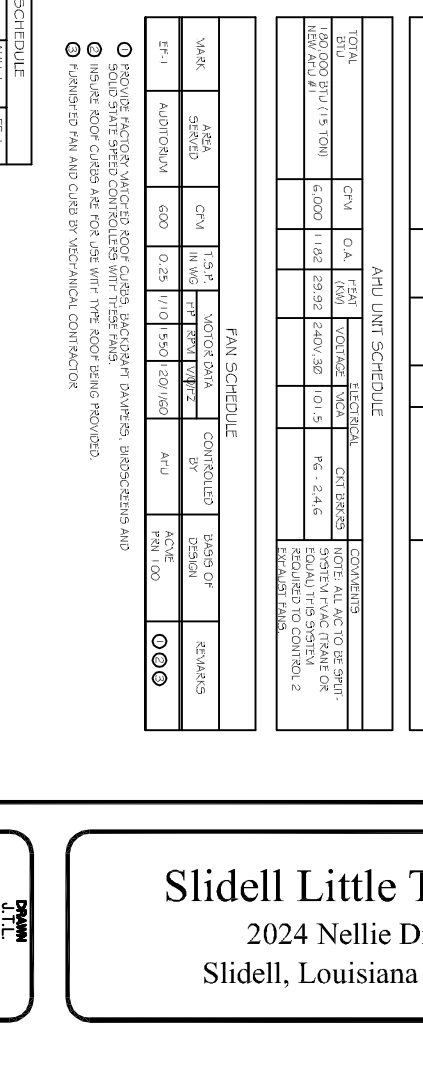
TYPICAL HORIZONTAL AHU DETAIL

SCALE: N.T.S.



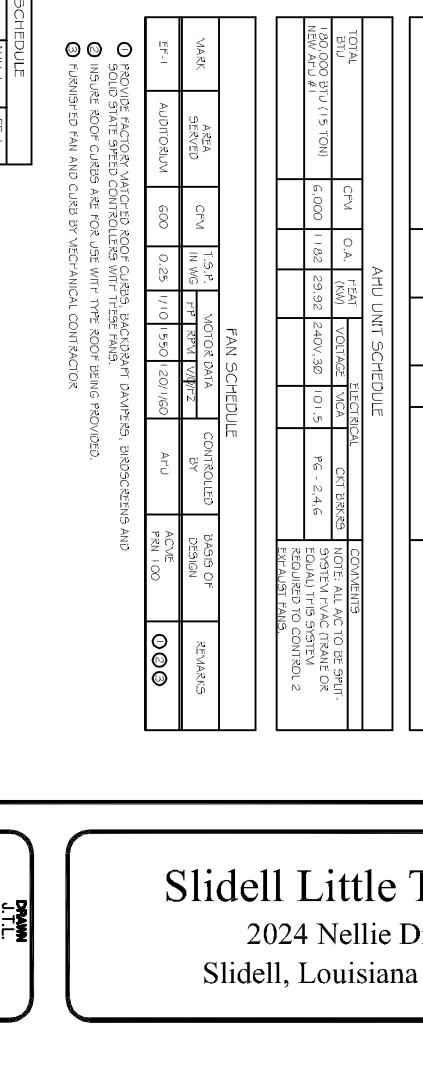
CONDENSING MOUNTING DETAIL

N.T.S.



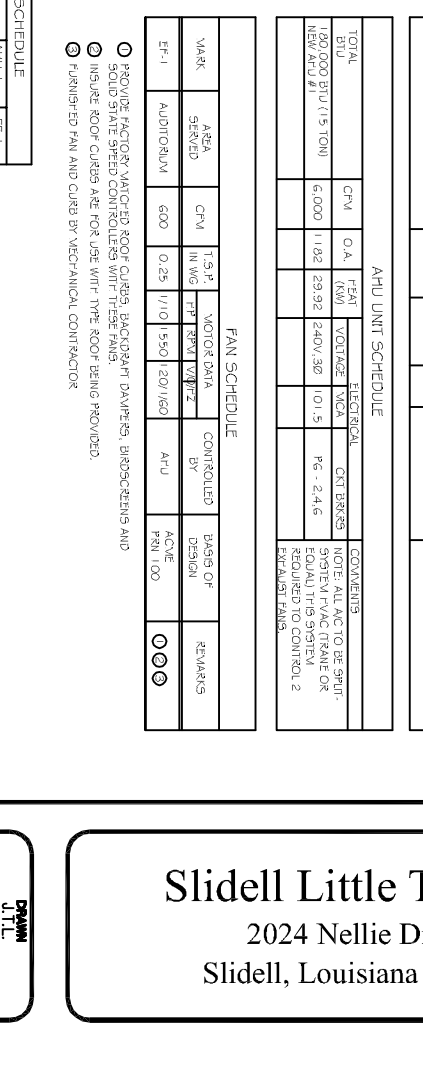
DUCT SPLITTER DETAIL

N.T.S.



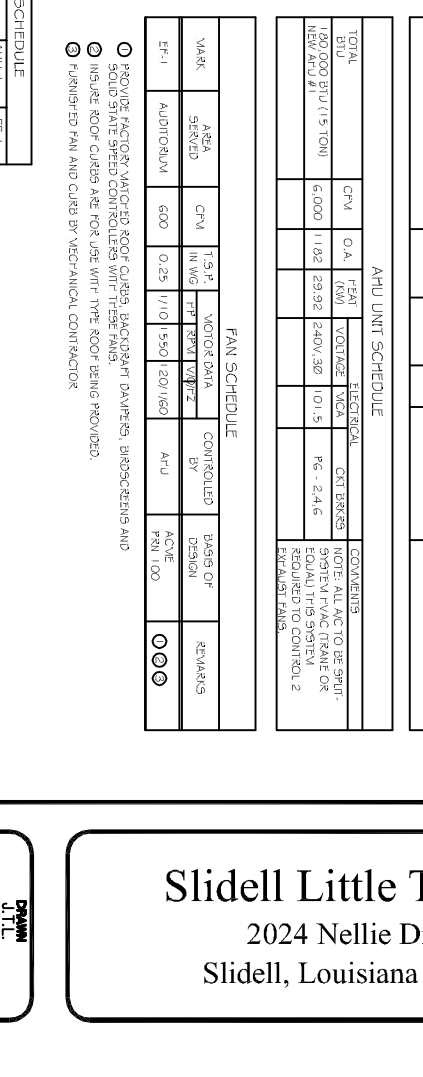
SUPPLY DUCT TAKE-OFF DETAIL

N.T.S.



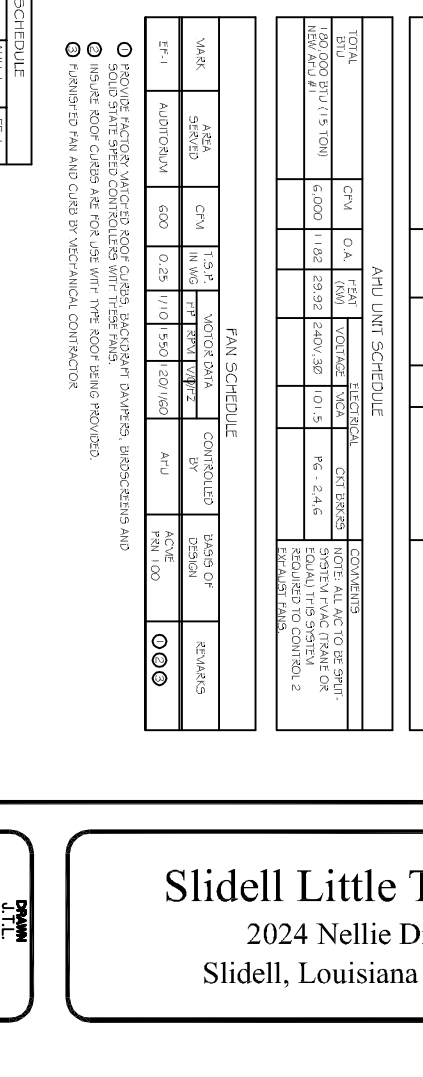
SQUARE ELBOW DETAIL

N.T.S.



DIFFUSER CONNECTION DETAIL-FLEX DUCT

N.T.S.



MECHANICAL NOTES

9/22/14

JUL

These documents are and shall remain the property of the architect and shall not be used for any other project without the written consent of the architect. The removal of these documents, the stamp from these documents, or the use of these documents without the approval of the architect, shall be a violation of the architect's professional ethics and shall be subject to the penalties of the laws of the state of Louisiana.

FRANK E. GERARVE, JR., ARCHITECT, L.L.C.
 A Professional Architectural Limited Liability Company
 Designers Planners Engineers

9108 CHRETIEN POINT PLACE, RIVER RIDGE, LOUISIANA 70123
 Telephone: (504) 737-2822 Fax: (504) 737-2822

Slidell Little Theatre
 2024 Nellie Drive
 Slidell, Louisiana 70458

DAMMON ENGINEERING INC.
 Architects & Engineers
 Chief Architect: Kevin J. Kinnison, NCARB
 Chief Engineer: Brian Atchaf, PE
 524 Old Spanish Trail, Slidell, LA 70458
 www.dammonengineering.com
 dammoneng@slidell.net
 PH: 985.543.5831
 FX: 985.541.2893

M-1
 9/19/14
 SCALE NOTED
 JOB NO.