

NO.	DATE	DESCRIPTION

These documents are and shall remain the property of the architect and shall not be reproduced, stored in a retrieval system, or transmitted in any form or by any means, electronic, mechanical, photocopying, recording, or by any information storage and retrieval system, without the prior written consent of the architect. The removal of the architect's seal or stamp from these documents unless otherwise provided by written approval of the architect shall be a violation of the Louisiana Professional Engineering and Surveying Act, R.S. 37:1201 through 37:1205, and shall be subject to the penalties, fines and/or imprisonment as stated by Louisiana Law.

FRANK E. GERARVE, JR., ARCHITECT, L.L.C.
 A Professional Architectural Limited Liability Company
 Designers Planners Engineers
 9108 CHRETIEN POINT PLACE, RIVER RIDGE, LOUISIANA 70123
 Telephone: (504) 737-2821 Facsimile: (504) 737-2822

Slidell Little Theatre
 2024 Nellie Drive
 Slidell, Louisiana 70458

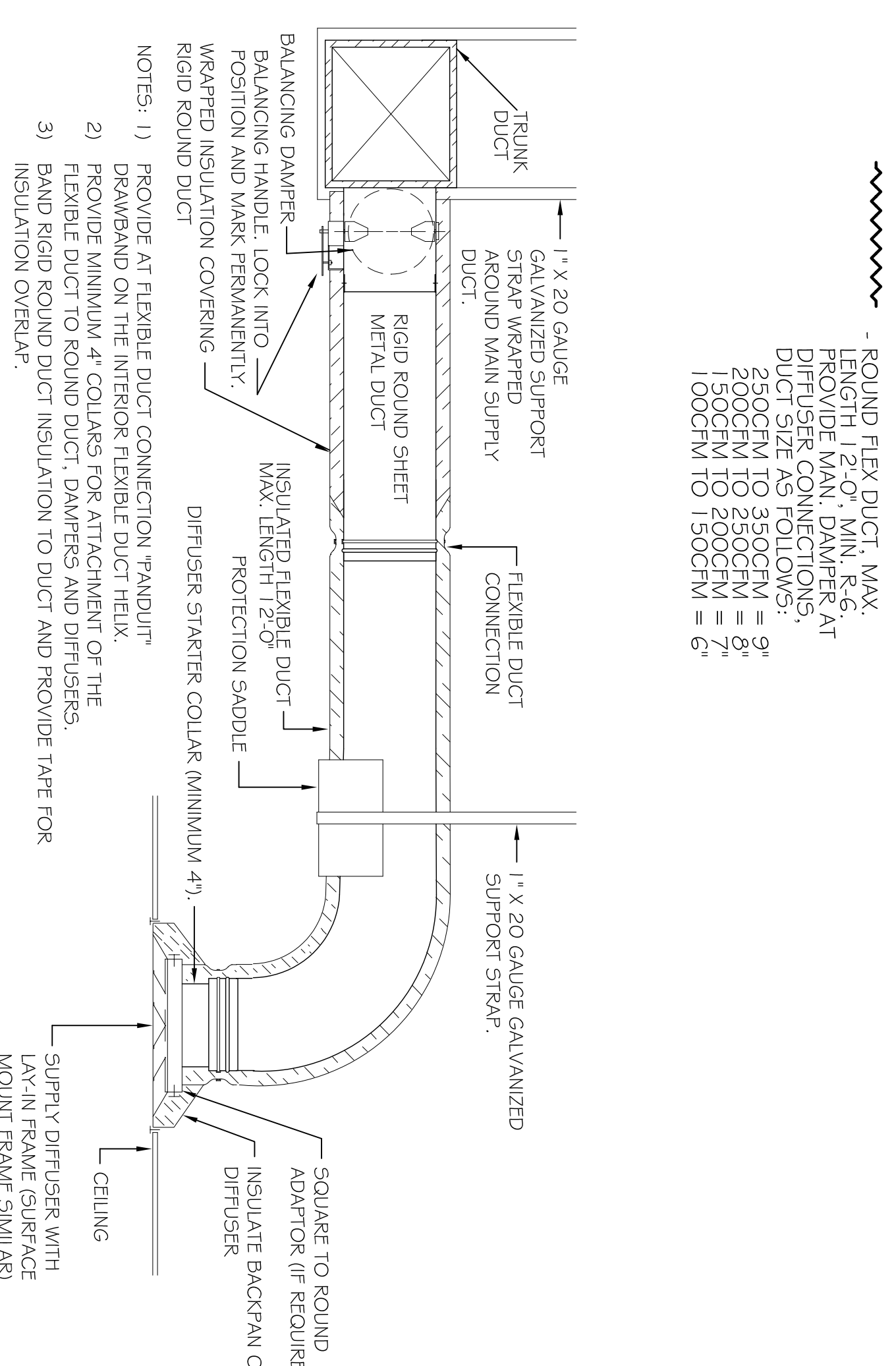
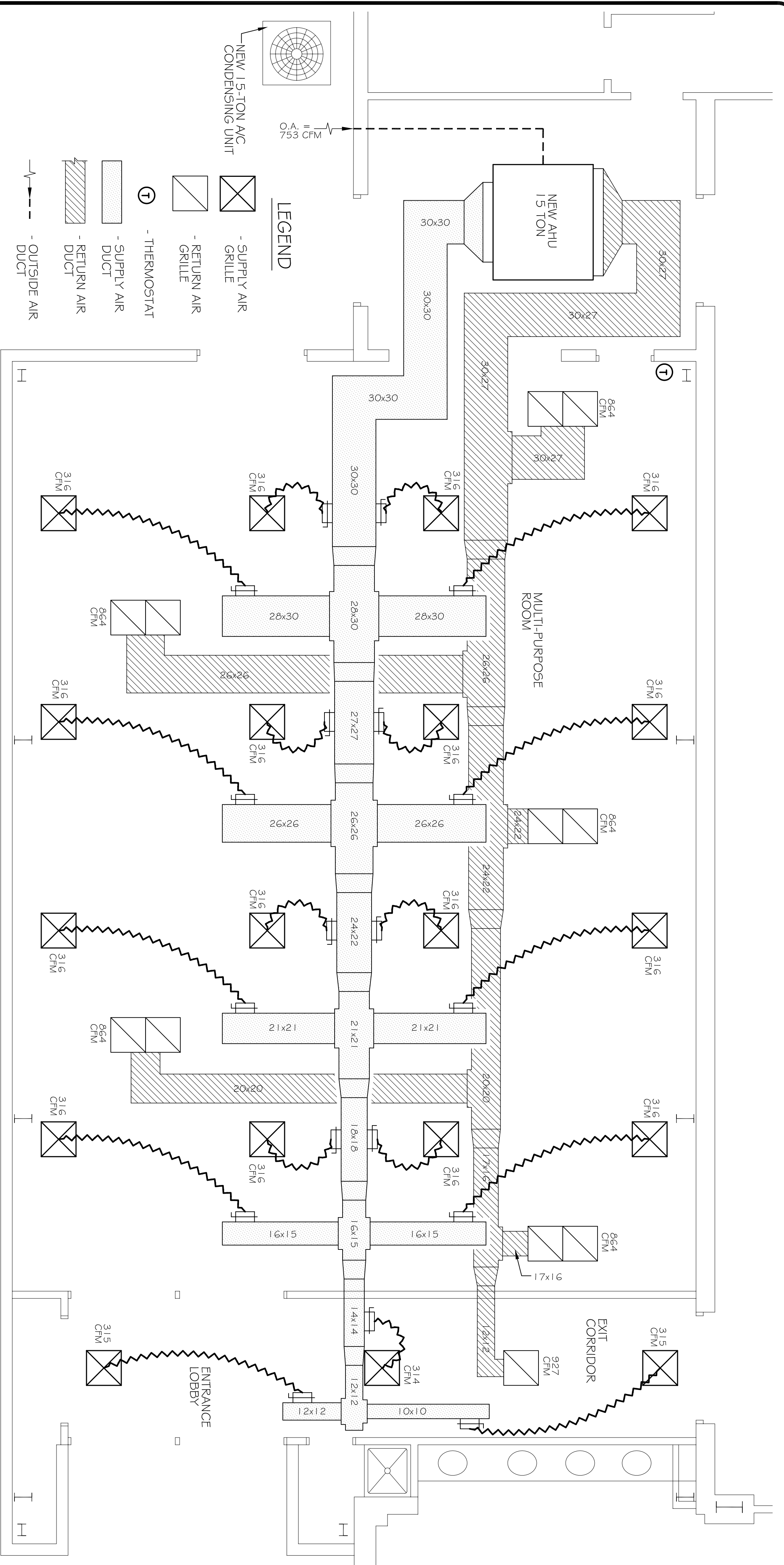
DAMMON ENGINEERING, INC.
 Architects & Engineers
 Chief Architect: Kevin J. Kiroden, NCA88
 Chief Engineer: Brian Metcher, PE
 www.dammonengineering.com
 www.dammoneng@slidell.louisiana.net
 Slidell, LA 70458
 P: 981.641.5950

HVAC NOTES

1. CONCEALED DUCTWORK TO BE UL-181, CLASS 1, FIBERGLASS DUCTBOARD. DUCTS SHALL BE SIZED TO LIMIT MAIN DUCTS TO 1000 CFM & SECONDARY DUCTS TO 800 CFM. TO BE INSTALLED PER SMACNA STANDARDS.
2. EXPOSED DUCTWORK TO BE GALVANIZED SHEET METAL PER SMACNA STANDARDS. LINE WITH NEOPRENE COATED 1.0" x 1.5 POUNDS PER CUBIC FOOT DUCT INSULATION.
3. ROUND FLEXIBLE DUCT TO BE UL-181, CLASS 1, AIR DUCT MATERIALS.
4. DUCT SIZES SHOWN ARE CLEAR INSIDE DIMENSIONS.
5. IN ALL SYSTEMS OVER 2000 CFM AND LESS THAN 15,000 CFM, SMOKE DETECTORS SHALL BE INSTALLED IN ACCORDANCE WITH NFPA 72E IN THE RETURN DUCT DOWNSTREAM OF THE AIR HANDLING UNIT AND ALL FILTERS TO AUTOMATICALLY STOP THE FAN.
6. PROVIDE U.L. LISTED 125°F FIRESTAT IN RETURN AIR OF EACH SYSTEM UNDER 2000 CFM TO SHUT DOWN THE FAN IN THE EVENT OF FIRE.
7. PROVIDE U.L. RATED FIRE DAMPERS WHERE REQUIRED AT ALL DUCT PENETRATIONS OF FIRE-RATED ASSEMBLIES AND WHERE REQUIRED BY CODE, INCLUDING OUTSIDE AIR INTAKES, CONDENSATE DRAINS TO BE PVC PIPE RUN TO PLUMBERS P-TRAP WITHIN FIVE FEET OF AIR HANDLING UNITS.
8. ALL AIR HANDLING SYSTEMS TO BE BALANCED TO ASSURE PROPER AIR FLOWS PER PLANS.
9. ALL THERMOSTATS TO BE AUTOMATIC CHANGEOVER WITH HEAT SWITCH.
10. ALL EXHAUST FAN EQUAL TO BROAD MODEL NO. 100 CF OR EQUAL. FAN SHALL BE CONTROLLED BY A SWITCH ON THE WALL IN THE SAME LOCATION AS LIGHT SWITCH(S).
11. PROVIDE BACK DRAFT DAMPER.
12. PLUMBING AND INSTALL WATER PROOF GRILLE VENT IN PROPER ROOF LOCATION FOR PLUMBING FIXTURE EXHAUST.
13. ALL SUPPLY AIR VENTS SHALL BE EQUIPPED WITH AIR CONTROL DAMPERS.
14. LOCATE OUTDOOR UNITS AS SHOWN ON ARCH. DWGS.
15. REFRIGERANT LINES SHALL BE SIZED BY UNIT MANUFACTURER AND INSTALLED ACCORDING TO MANUFACTURER'S INSTRUCTIONS.
16. FRESH AIR SHALL BE SUPPLIED TO EACH AIR HANDLER THROUGH EXTERIOR WALL DUCT SUPPLIED WITH A CONTROL DAMPER.
17. INSTALL FIRE DAMPER WHERE 5 A. & R.A. DUCTS PENETRATE 1 HOUR RATED CEILINGS, ALL ELECTRICAL, MECHANICAL, AND PLUMBING PENETRATING FIRE WALLS SHALL BE FIRE CALKED. (PENETRATIONS THROUGH RATED CONSTRUCTION SHALL BE SEALED WITH A MATERIAL CAPABLE OF PREVENTING THE PASSAGE OF FLAMEBAND HOT GASES WHEN TESTED IN ACCORDANCE WITH ASTM E814).
18. ALL MECHANICAL SYMBOLS ARE DRAWN DIAGNOMATICALLY. CONTRACTOR TO VERIFY WITH OWNER LOCATIONS OF RA, DAMPERS, REGISTERS, ETC.
19. REFER TO STRUCTURAL DRAWINGS TO COORDINATE LOCATION(S) & MOUNTING OF MECHANICAL EQUIPMENT.
20. FLEXIBLE DUCTWORK LENGTH NOT TO EXCEED 10'-0".
21. REFER TO REFLECTED CEILING PLAN FOR FINAL GRILLE AND DIFFUSER LOCATIONS AND COORDINATE AS REQUIRED.
22. FINAL LOCATION OF TEMPERATURE CONTROLS TO BE COORDINATED WITH OWNER AT JOB SITE.
23. PROVIDE AND INSTALL SMOKE DETECTORS AS APPROVED BY LOCAL AHJ'S. PLACE NEAR RA AND S/A OPENINGS OF AHU AND PROVIDE WITH ACCESS PANEL, WIRING BY ELECTRICAL CONTRACTOR.
24. FRESH AIR INTAKES ARE REQUIRED TO HAVE MOTORIZED OR GRAVITY DAMPERS TO SHUT OFF WHEN SYSTEM IS NOT RUNNING. ALL THERMOSTATS MUST BE PROGRAMMABLE. SEE SECTIONS 502.4.4 OR 503.2.4.3 OF THE 2006 INTERNATIONAL ENERGY CODE.

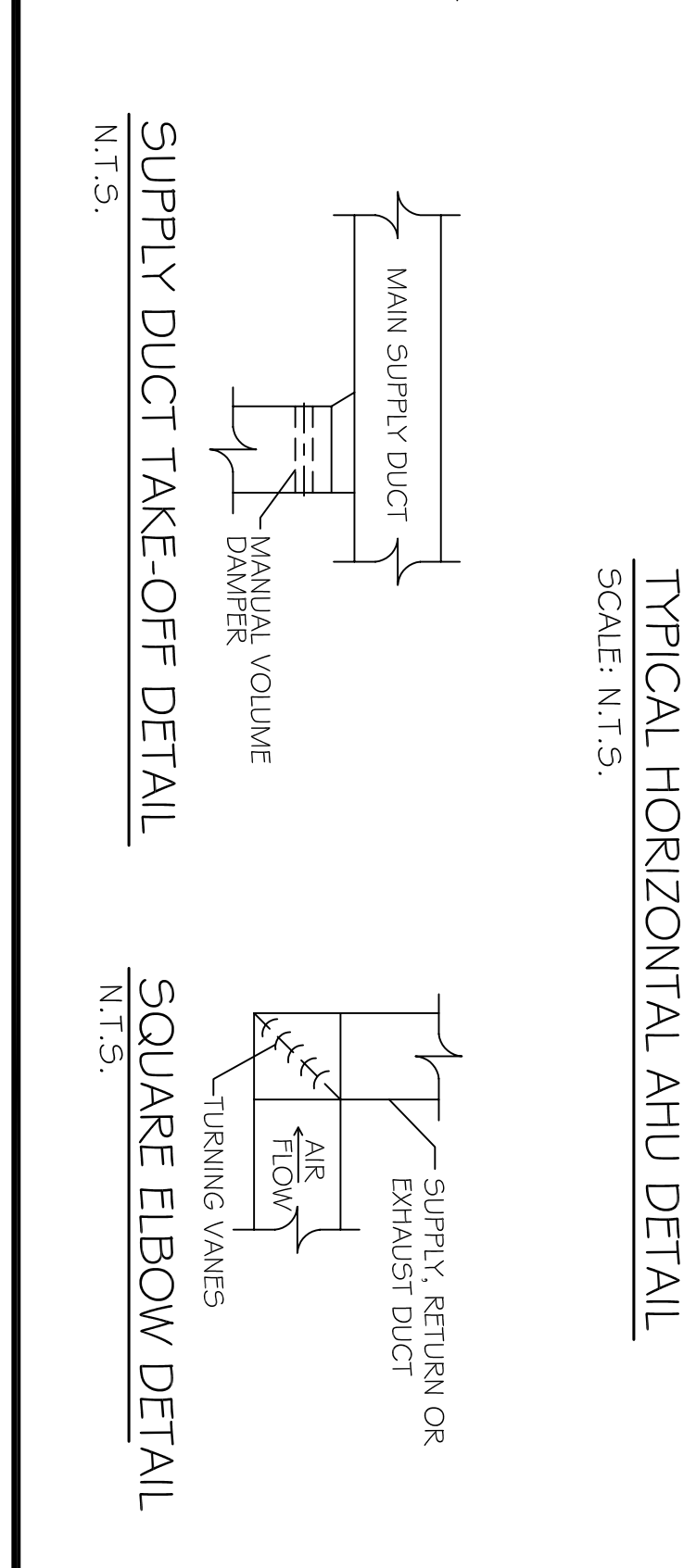
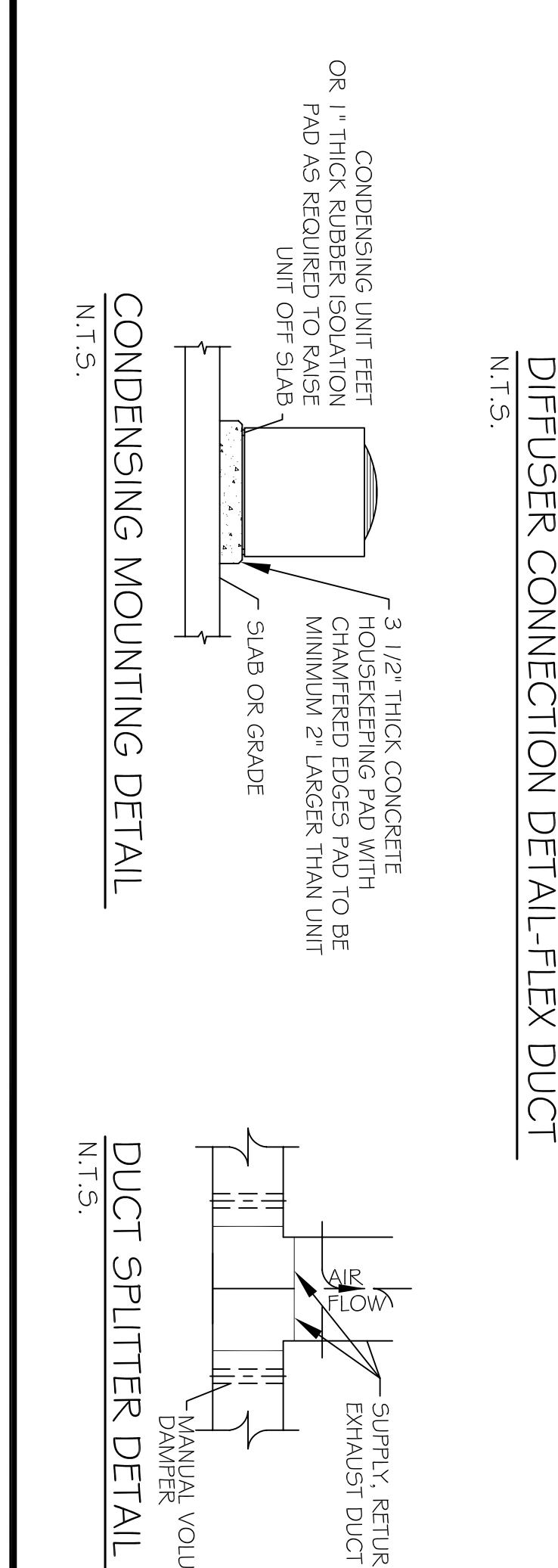
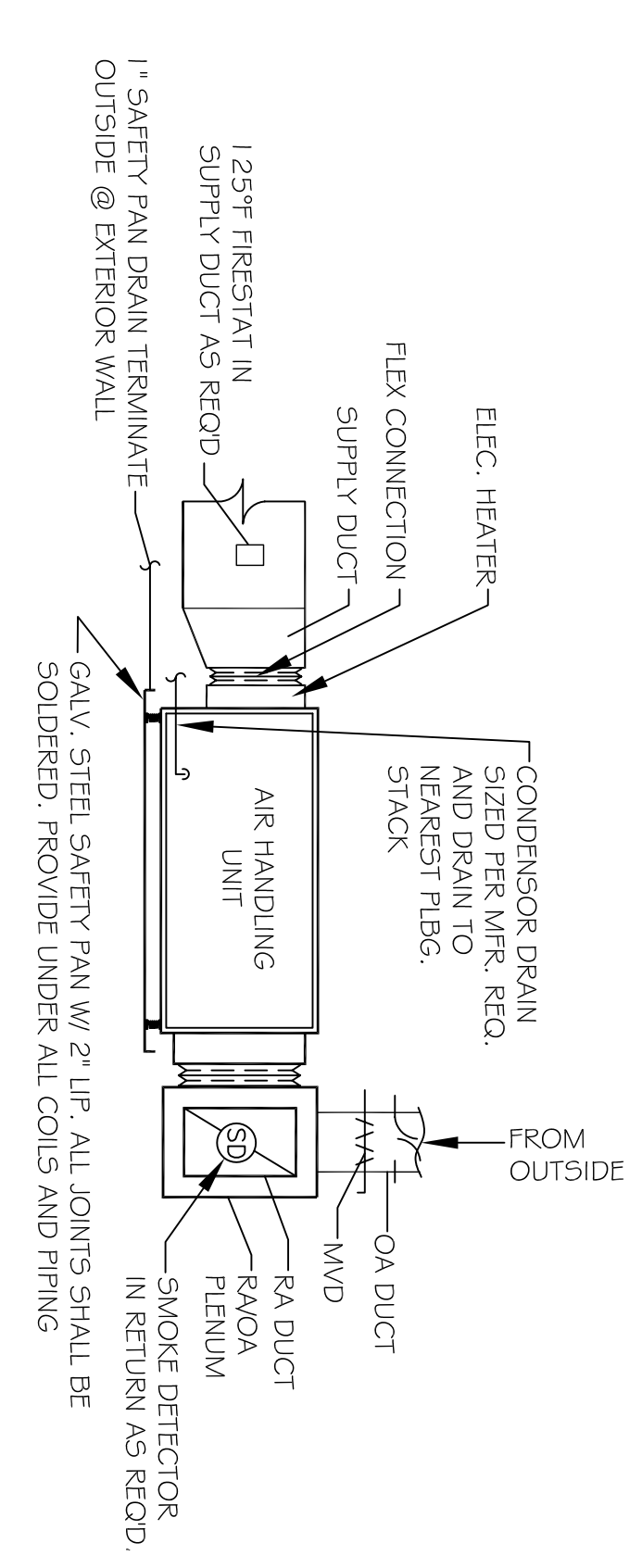
MECHANICAL PLAN

SCALE: 1/4" = 1'-0"



TYPICAL HORIZONTAL AHU DETAIL

SCALE: N.T.S.



AC UNIT SCHEDULE		ELECTRICAL		COMMENTS	
TOTAL BTU	NEW AC #1	VOLTAGE MCA	CKT BRKRS	NOTE: ALL AC TO BE SPLIT-SYSTEM HVAC FRAME OR EOUAD	
180,000 BTU (1.5 TON)		209V, 3Ø	56, 3	NF-1, 3-5	

AHU UNIT SCHEDULE		ELECTRICAL		COMMENTS	
TOTAL CFM	O.A. (RM)	VOLTAGE MCA	CKT BRKRS	NOTE: ALL AC TO BE SPLIT-SYSTEM HVAC FRAME OR EOUAD	
6,000	753	209V, 3Ø	42, 0	NF-2, 4, 6	

In joint venture with:
DAMMON ENGINEERING, INC.
 Architects & Engineers
 Chief Architect: Kevin J. Kiroden, NCA88
 Chief Engineer: Brian Metcher, PE
 www.dammonengineering.com
 www.dammoneng@slidell.louisiana.net
 Slidell, LA 70458
 P: 981.641.5950

M-1
 SHEET 9 OF 13