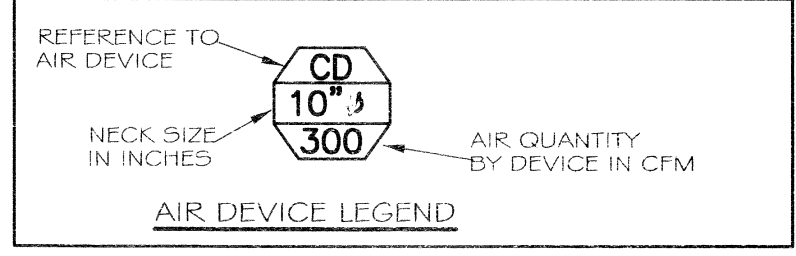


MECHANICAL PLAN

SCALE: 1/4" = 1'-0"

MARK	DESCRIPTION	BASIS OF DESIGN	REMARKS
CD	CEILING DIFFUSER	TITUS TMS-AA	FRAME STYLE 3 FOR 24"x24" LAY-IN MODULE, OFF WHITE FINISH, ALL ALUMINUM CONST. ROUND NECK 4" SQUARE FACE, PROVIDE WITH OPPOSED BLADE DAMPER, NECK SIZE, AND GRADE AS INDICATED.
ER	EXHAUST REGISTER	TITUS 50 FF	FRAME STYLE 1 FOR SURFACE MOUNT, OFF WHITE FINISH, ALL ALUMINUM CONST. SIZE AND CFM AS INDICATED.
RAG	RETURN AIR GRILLE	TITUS 50 FF	FRAME STYLE 3 FOR 24"x24" LAY-IN MODULE, OFF WHITE FINISH, ALL ALUMINUM CONST. SIZE AND CFM AS INDICATED.

- ① THROW PATTERNS FOR CEILING DIFFUSERS ARE 4-WAY UNLESS OTHERWISE INDICATED
- ② PROVIDE PLASTER FRAMES FOR LAY-IN DEVICES IN GYP. BOARD CEILINGS
- ③ PROVIDE FILTER FOR ALL EXHAUST REGISTERS AND RETURN AIR GRILLES



MECHANICAL NOTES

- CONTRACTOR SHALL VERIFY THAT ALL EQUIPMENT, AS SHOWN ON THESE DRAWINGS, WILL NOT CONFLICT WITH ANY DRAINS, SCUTTLERS, JOINTS, ETC.
- ALL ROOF MOUNTED EQUIPMENT AND PENETRATIONS SHALL BE FLASHED A MINIMUM OF 12" ABOVE THE ROOF VIA ROOF CURBS AND PIPE SEALS. PROVIDE AMPLE SUPPLY OF PIPE SEALS FOR ELECTRICAL PENETRATIONS.
- ALL OUTSIDE AIR INTAKES SHALL BE A MINIMUM OF 1'-0" FROM ANY EXHAUST FAN OR PLUMBING VENT. FRESH AIR SHALL BE SUPPLIED TO EACH AIR HANDLER THROUGH EXTERIOR WALL DUCT SUPPLIED WITH A CONTROL DAMPER TO SHUT WHEN SYSTEM IS NOT RUNNING.
- MECHANICAL SYMBOLS SHOWN ON THESE DRAWINGS ARE DRAWN DIAGRAMMATICALLY. CONTRACTOR TO VERIFY WITH OWNER LOCATIONS OF VENTS, DAMPERS, REGISTERS, ETC. REFER TO REFLECTED CEILING PLAN FOR FINAL GRILLE AND DIFFUSER LOCATIONS AND COORDINATE AS REQUIRED.
- REFER TO STRUCTURAL DRAWINGS TO COORDINATE LOCATION(S) # MOUNTING OF MECHANICAL EQUIPMENT.
- THE MECHANICAL CONTRACTOR SHALL BE RESPONSIBLE FOR ADMINISTERING ALL WARRANTIES ON EQUIPMENT, WHICH HE INSTALLS. THIS INCLUDES ALL CONDENSERS, REFRIGERANT LINES, AND OTHER ITEMS FURNISHED BY OTHERS AS WELL AS THOSE FURNISHED BY HIM.
- CONDENSATE OVERFLOW DRAIN LINES SHALL BE PVC SCH 40 AND SHALL BE INSTALLED COMPLETELY SEPARATE TO SANITARY SEWER. DRAINS TO BE RUN TO PLUMBERS P-TRAP WITHIN FIVE FEET OF AIR HANDLING UNITS.
- PROVIDE VIBRATION ISOLATION DEVICES AND FLEXIBLE CONNECTIONS TO ALL MOVING MACHINERY.
- DUCTWORK TO BE GALVANIZED SHEET METAL PER SMCA STANDARDS. LINE WITH NEOPRENE COATED 1.0", 1.5 POUNDS PER CUBIC FOOT DUCT INSULATION.
- ROUND FLEXIBLE DUCT TO BE UL-181, CLASS 1, AIR DUCT MATERIALS AND BE INSULATED WITH A MINIMUM "R" VALUE OF 6.
- ALL DUCT DIMENSIONS SHOWN ON DRAWINGS ARE CLEAR INSIDE DIMENSIONS. DUCTS SHALL BE SIZED TO LIMIT MAIN DUCTS TO 1000 FPM & SECONDARY DUCTS TO 800 FPM.
- ALL SUPPLY AIR VENTS SHALL BE EQUIPPED WITH AIR CONTROL DAMPERS.
- THE CONTRACTOR SHALL PROVIDE COMPLETE INFORMATION AND COOPERATION TO THE OTHER CONTRACTORS AND TRADES AS REQUIRED FOR COMPLETION AND COORDINATION OF THE COMPLETE PROJECT.
- THIS CONTRACTOR SHALL COORDINATE WITH THE GENERAL CONTRACTOR AND ALL OTHER TRADES FOR ALL REQUIRED OPENINGS IN FOUNDATIONS, FLOORS, WALLS AND ROOF. CUTTING AND PATCHING SHALL BE HELD TO A MINIMUM.
- TEMP. SENSORS SHALL BE LOCATED GENERALLY AS SHOWN BUT THEIR EXACT LOCATION SHALL BE FIELD COORDINATED TO AVOID INTERFERENCE WITH WALL MOUNTED ITEMS. MOUNT SENSORS IN COMPLIANCE WITH ADA AS CODE SECTION 4.27. ALL THERMOSTATS SHALL BE AUTOMATIC CHANGEOVER WITH HEAT SWITCH. FINAL LOCATION OF TEMPERATURE CONTROLS TO BE COORDINATED WITH OWNER AT JOB SITE.
- ALL AIR HANDLING SYSTEMS TO BE BALANCED TO ASSURE PROPER AIR FLOWS PER PLANS.
- CONTRACTOR TO INSULATE BACKSIDE OF ALL DIFFUSERS WITH 2" MINIMUM OWENS-CORNING FIBERGLASS ALL SERVICE FACED DUCT WRAP.
- CONTRACTOR TO FABRICATE ALL DUCTWORK TRANSITIONS AS REQUIRED TO ATTACH DUCTWORK TO HVAC EQUIPMENT AND AIR DEVICES.
- ALL ROUND DUCT AND FLEX DUCT RUN OUTS SHALL BE THE SAME DIAMETER AS DIFFUSER NECK UNLESS NOTED OTHERWISE.
- PROVIDE RECTANGULAR TO ROUND TRANSITIONS FOR ALL DIFFUSERS AS NEEDED.
- VERIFY EXISTING CONDITIONS IN FIELD PRIOR TO BEGINNING WORK.
- PROVIDE AND INSTALL WATER PROOF GRILLE VENT IN PROPER ROOF LOCATION FOR PLUMBING FIXTURE EXHAUST.
- COORDINATE CEILING AIR DEVICE LOCATIONS WITH LIGHTING PLAN AND ARCHITECT'S REFLECTED CEILING PLAN.
- RETURN DUCTWORK SHALL BE LINED WITH 1-INCH ACOUSTICAL INSULATION.
- IN ALL SYSTEMS OVER 2,000 CFM AND LESS THAN 15,000 CFM, SMOKE DETECTORS SHALL BE INSTALLED IN ACCORDANCE WITH NFPA 90A IN THE SUPPLY DUCT DOWNSTREAM OF THE AIR HANDLING UNIT AND ALL FILTERS, TO AUTOMATICALLY STOP THE FAN. IN ALL SYSTEMS UNDER 2,000 CFM PROVIDE U.L. LISTED 125 F FIREHOT IN RETURN AIR OF EACH SYSTEM TO SHUT DOWN FAN IN THE EVENT OF FIRE.
- PROVIDE AND INSTALL SMOKE DETECTORS AS APPROVED BY LOCAL AHJ'S. PLACE NEAR R/A AND S/A OPENINGS OF AHU AND PROVIDE, WITH ACCESS PANEL, WIRING BY ELECTRICAL CONTRACTOR.
- PROVIDE U.L. RATED FIRE DAMPERS WHERE REQUIRED AT ALL DUCT PENETRATIONS OF FIRE-RATED ASSEMBLIES AND WHERE REQUIRED BY CODE, INCLUDING OUTSIDE AIR INTAKES.
- PROVIDE AND INSTALL WATER PROOF GRILLE VENT ON ROOF FOR TOILET EXHAUST.
- REFRIGERANT LINES SHALL BE SIZED BY UNIT MANUFACTURER AND INSTALLED ACCORDING TO MANUFACTURERS INSTRUCTIONS.
- INSTALL FIRE DAMPER WHERE S.A. AND R.A. DUCTS PENETRATE 1 HR. CONSTRUCTION.
- ALL ELECTRICAL, MECHANICAL AND PLUMBING PENETRATING FIRE PARTITIONS SHALL BE FIRE CAULKED. (PENETRATIONS THROUGH RATED CONSTRUCTION SHALL BE SEALED WITH A MATERIAL CAPABLE OF PREVENTING THE PASSAGE OF FLAMES AND HOT GASES WHEN TESTED IN ACCORDANCE WITH ASTM-E814.)

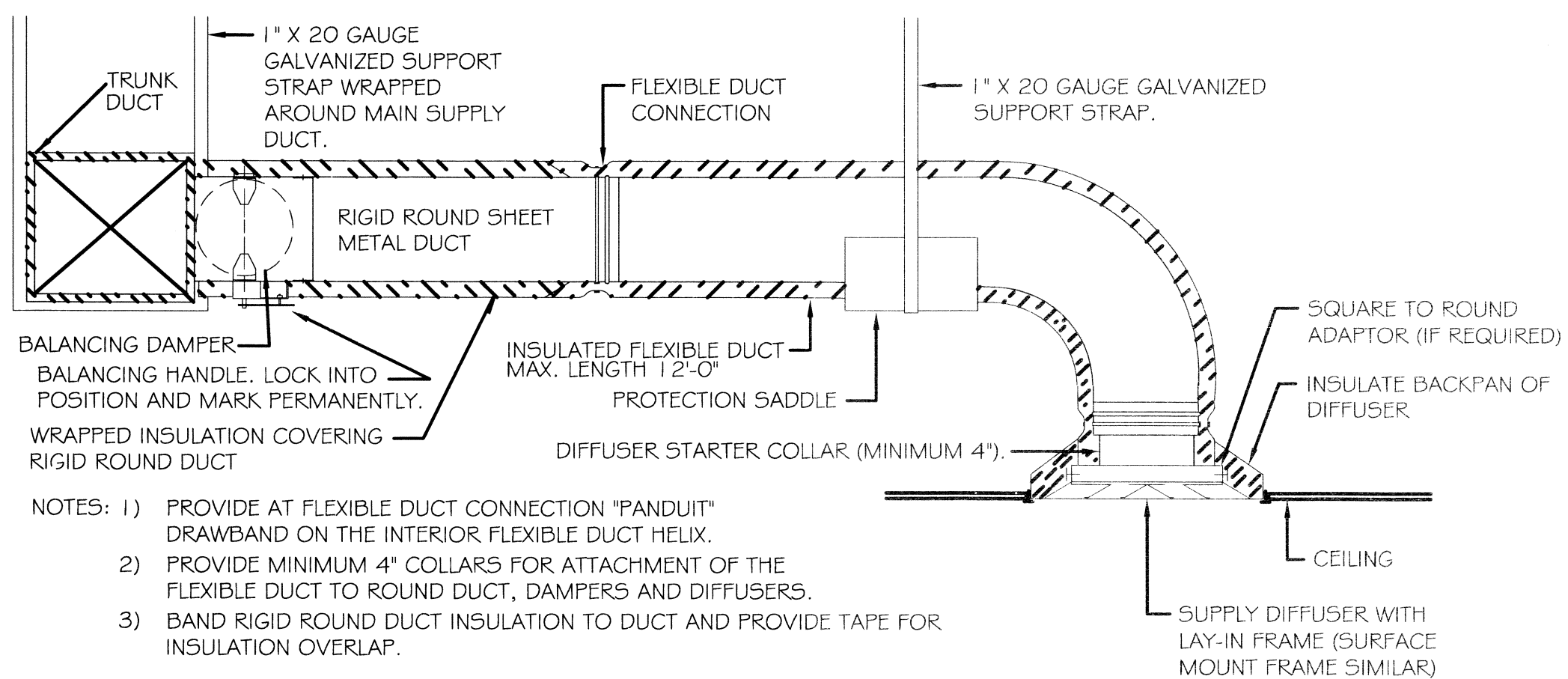
A/C UNIT SCHEDULE				
TOTAL BTU	EER	VOLTAGE	MCA	CKT BRKRS
180,000 BTU (15 TON) NEW AHU #1	12.0	240V, 3Ø	66.3	P6 - 1, 3, 5

AHU UNIT SCHEDULE				
TOTAL BTU	CFM	O.A.	HEAT (KW)	ELECTRICAL
180,000 BTU (15 TON) NEW AHU #1	6,000	1182	29.92	240V, 3Ø 101.5 P6 - 2, 4, 6

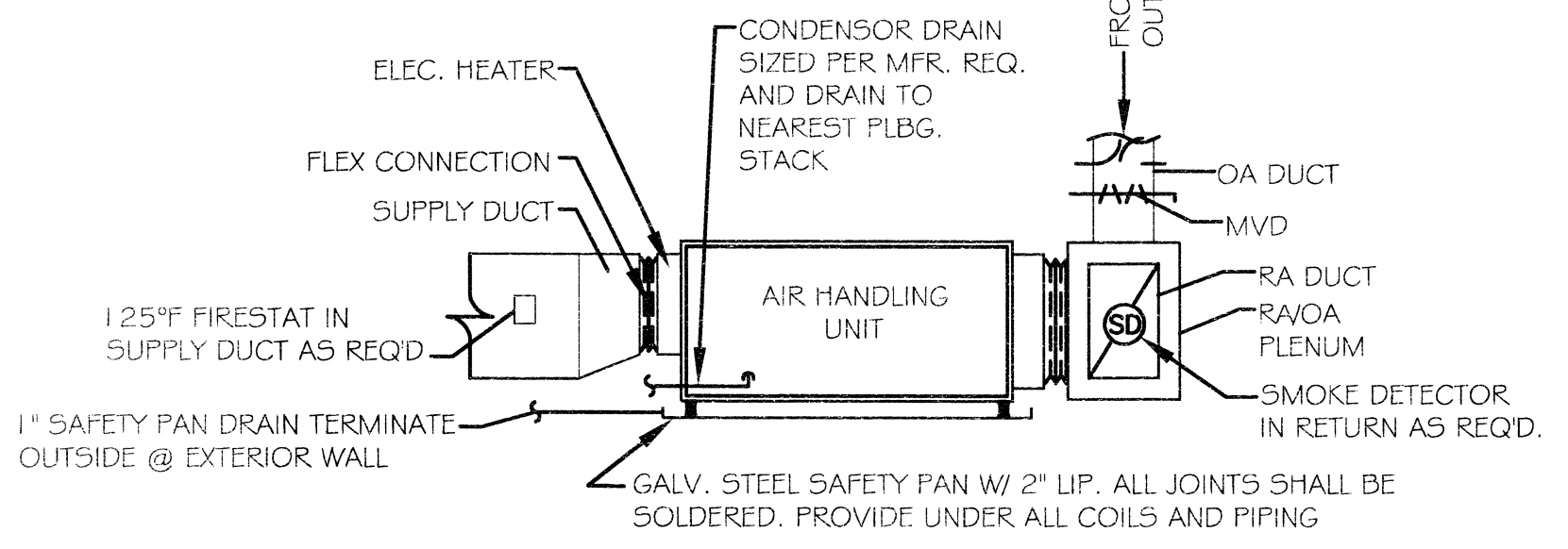
FAN SCHEDULE						
MARK	AREA SERVED	CFM	T.S.P. IN WG	MOTOR DATA HP RPM 1/4/5/60	CONTROLLED BY	BASIS OF DESIGN
EF-1	AUDITORIUM	600	0.25	1/10 1550 120/1/60	AHU	ACME PRN 100

- ① PROVIDE FACTORY MATCHED ROOF CURBS, BACKDRAFT DAMPERS, BIOSCREENS AND SOLID STATE SPEED CONTROLLERS WITH THESE FANS.
- ② INSURE ROOF CURBS ARE FOR USE WITH TYPE ROOF BEING PROVIDED.
- ③ FURNISHED FAN AND CURB BY MECHANICAL CONTRACTOR

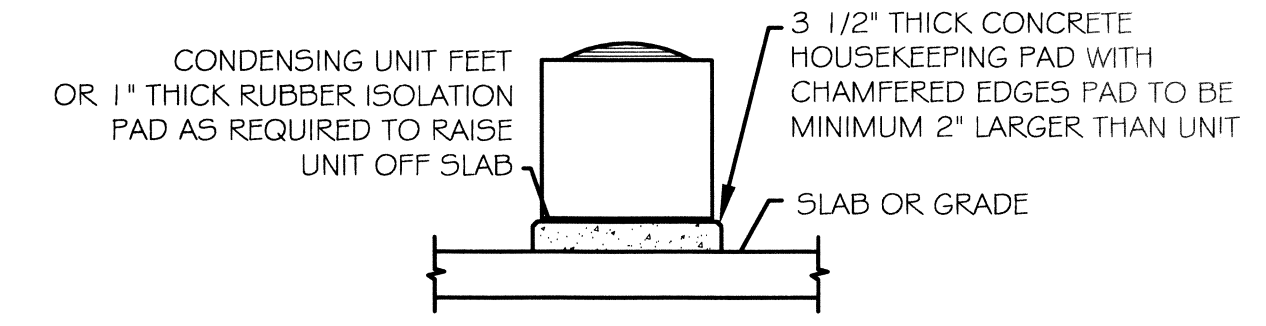
AIR BALANCE SCHEDULE		
	AHU-1	EF-1
OUTSIDE AIR FLOW (CFM)	1182	
RETURN AIR FLOW (CFM)	4818	
SUPPLY AIR FLOW (CFM)	6000	
EXHAUST AIR FLOW (CFM)		550
BUILDING PRESSURE (CFM)	1182	-550
QUANTITIES	1	2
TOTAL PRESSURIZATIONS	1182	-1100
RESULTING BUILDING PRESSURIZATION (CFM)	+82	



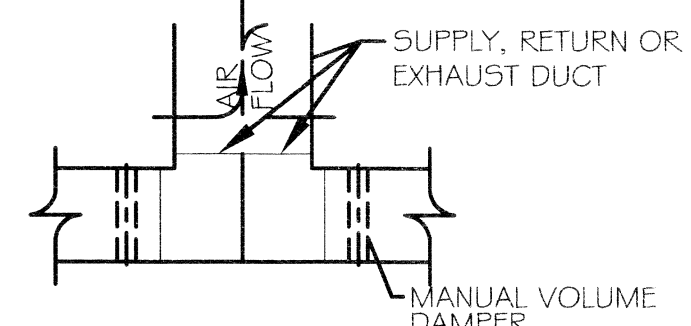
DIFFUSER CONNECTION DETAIL-FLEX DUCT
N.T.S.



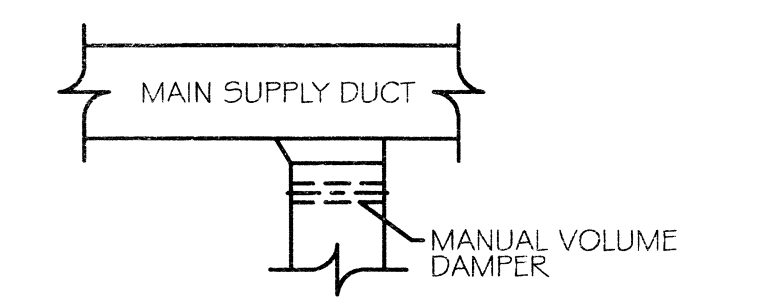
TYPICAL HORIZONTAL AHU DETAIL
SCALE: N.T.S.



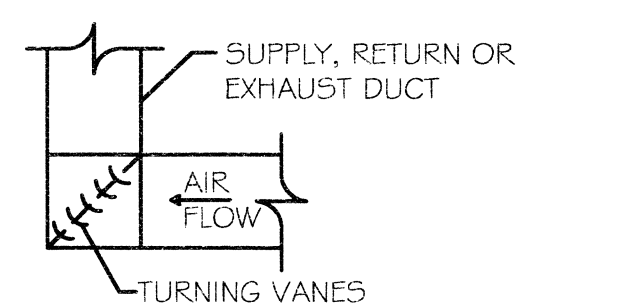
CONDENSING MOUNTING DETAIL
N.T.S.



DUCT SPLITTER DETAIL
N.T.S.



SUPPLY DUCT TAKE-OFF DETAIL
N.T.S.



SQUARE ELBOW DETAIL
N.T.S.

REVISIONS	BY

This document and all shall remain the property of the architect and are intended for the sole use as indicated on these documents. The removal of the architect's seal or stamp from these documents unless otherwise provided by written approval of the architect, shall be a violation of law. (L.A. R.S. 37: Chapter 3, 1983) and such persons shall be subject to the penalties, fines and or imprisonment as stated by Louisiana Law.

FRANK E. GERARVE, JR., ARCHITECT, L.L.C.
A Professional Architectural Limited Liability Company
Engineers
Planners
Designers
9108 CHRISTEN POINT PLACE,
Telephone: (504) 737-2821
RIVER RIDGE, LOUISIANA 70123
Facsimile: (504) 737-2822

Slidell Little Theatre
2024 Nellie Drive
Slidell, Louisiana 70458

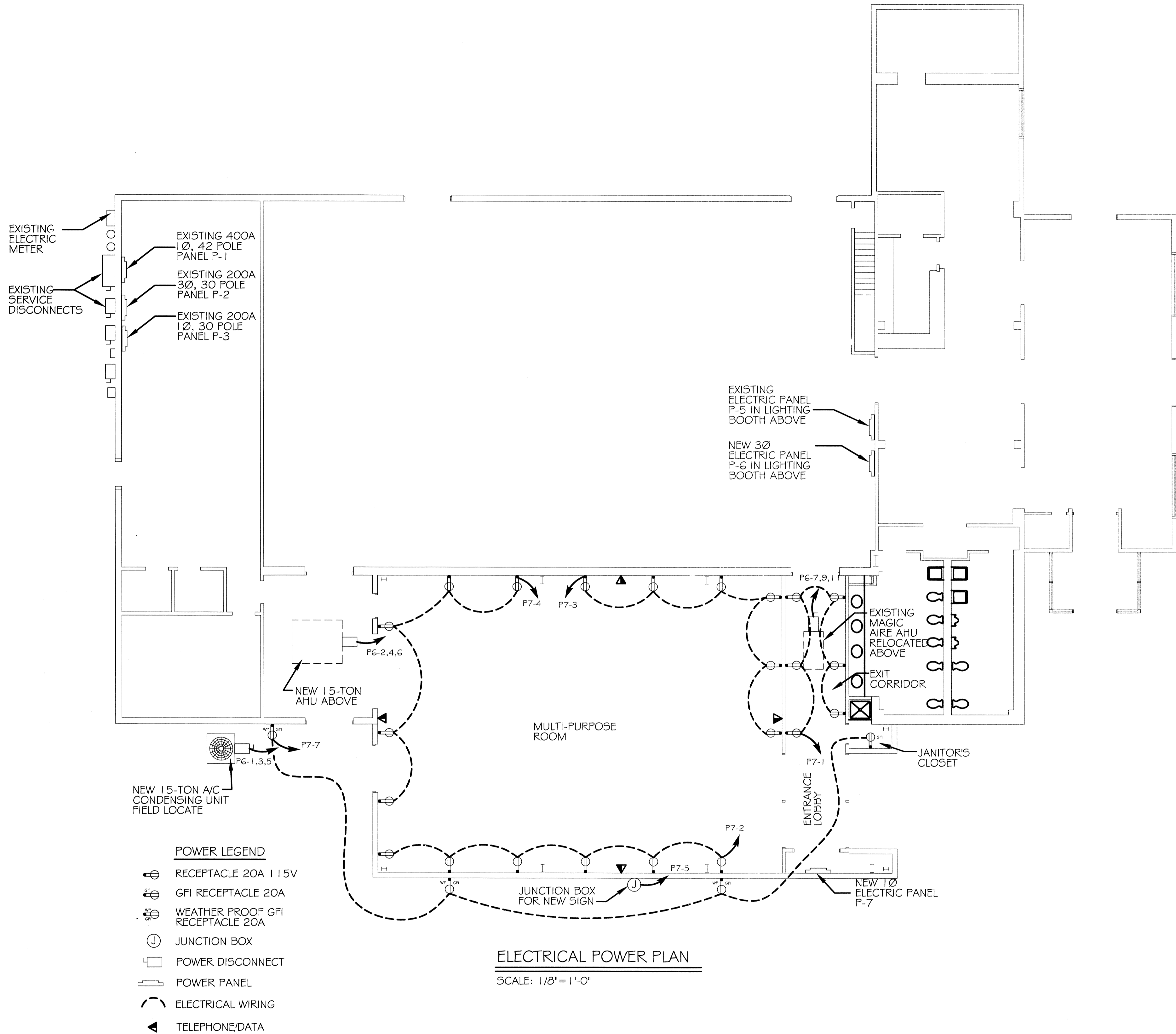
DRAWN J.T.L.
CHECKED C.K.D.
DATE 6/6/14
SCALE NOTED
JOB NO.
SHEET
M-1

in joint venture with:

DAMMON ENGINEERING, INC.
Architects & Engineers

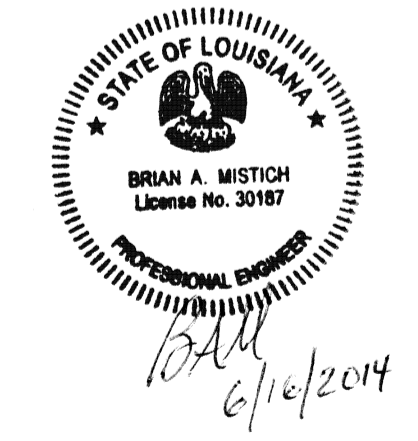
Chief Architect: Kevin J. Kinchen, NCARB
Chief Engineer: Brian Mistich, PE
554 Old Spanish Trail
Slidell, LA 70458
www.dammonengineering.com
dammoneng@bellsouth.net
Phone: 985.649.5832
Fax: 985.641.5950





ELECTRICAL NOTES

- ALL WORK SHALL CONFORM TO THE LATEST EDITION OF THE NATIONAL ELECTRICAL CODE INCLUDING ART 520, THE GOVERNING ELECTRICAL CODE AND ALL OTHER INSPECTION DEPARTMENTS HAVING JURISDICTION. OBTAIN CERTIFICATES OR APPROVAL WHERE REQUIRED.
- ALL MATERIALS FURNISHED SHALL BE NEW AND SHALL BE U.L. LISTED.
- THE DRAWINGS INDICATE SIZE AND GENERAL LOCATION OF WORK. SCALE DIMENSIONS SHALL NOT BE USED. THE EXACT LOCATION AND LOCATION OF ALL LIGHTING FIXTURES, RECEPTACLES AND TELEPHONE OUTLETS, ETC. SHALL BE DETERMINED BY ACTUAL CONDITIONS IN THE FIELD.
- PRIOR TO BIDDING, CONTRACTOR SHALL VISIT THE JOB SITE AND FAMILIARIZE THEMSELVES WITH THE EXISTING CONDITIONS.
- ELECTRICAL CONTRACTOR SHALL COORDINATE HIS WORK WITH OTHER TRADES AND WITH OTHER CONTRACTORS WHOSE WORK MAY AFFECT THIS INSTALLATION.
- ELECTRICAL CONTRACTOR SHALL COORDINATE INCOMING ELECTRICAL SERVICE WITH UTILITY COMPANY AND INCLUDE IN HIS BID ALL CHARGES AND FEES INCURRED IN MODIFICATIONS.
- WHERE MORE THAN ONE SWITCH OCCURS IN THE SAME LOCATION, THEY SHALL BE INSTALLED IN A GANG TYPE BOX UNDER ONE COVER PLATE.
- ELECTRICAL CONTRACTOR SHALL COORDINATE THE TELEPHONE INSTALLATION WITH THE TELEPHONE COMPANY AND THE GENERAL CONTRACTOR.
- ELECTRICAL CONTRACTOR, BEFORE INSTALLING ANY OF THE WORK, SHALL SEE THAT IT DOES NOT INTERFERE WITH CLEARANCES REQUIRED FOR FINISHED COLUMNS, HUNG CEILINGS, PLASTER, PARTITIONS, WALLS, ETC. AS SHOWN IN THE ARCHITECTURAL DRAWINGS AND DETAILS. IF ANY WORK IS INSTALLED AND IT LATER DEVELOPS THAT SUCH DETAILS OR DESIGN CANNOT BE FOLLOWED, THE CONTRACTOR, AT HIS OWN EXPENSE, SHALL MAKE SUCH CHANGES IN THE WORK AS DIRECTED BY THE ARCHITECT, AS WELL AS TO PERMIT THE INSTALLATION OF THE ARCHITECTURAL WORK AS SHOWN ON THE PLANS AND DETAILS.
- PERFORM TEST REQUIRED BY THE OWNER OR THE ENGINEER IN CONNECTION WITH THE OPERATION OF THE ELECTRICAL SYSTEM IN THE BUILDING.
- ALL TESTS SHALL BE MADE IN ACCORDANCE WITH THE LATEST STANDARD OF THE IEEE AND THE NATIONAL ELECTRICAL CODE.
- MINIMUM CONDUCTOR SIZE SHALL BE #12, 600V INSULATION. MINIMUM SIZE CONDUIT SHALL BE 3/4" EMT FOR INTERIOR USE, AND 3/4" RIGID ALUMINUM FOR EXTERIOR USE. USE TYPE MC CABLE COPPER, FOR LIGHTS AND RECEPTACLE CIRCUITS. EXTERIOR FITTINGS SHALL BE CAST BOXES AND COVERS. INTERIOR FITTINGS SHALL BE CAST WHERE EXPOSED ON WALLS. STAMPED BOXES MAY BE USED ABOVE CEILINGS IN AIR CONDITIONED SPACES. WHERE LAY IN FIXTURES ARE IN USE, USE 1 1/2 WHIP 6' LENGTH MAX.
- CONTRACTOR SHALL INSTALL WIRING AND OTHER CIRCUIT COMPONENTS TO MATCH EQUIPMENT ACTUALLY INSTALLED.
- INSTALL GROUND FAULT RECEPTACLES AT RECEPTACLE LOCATIONS WITHIN 5' OF SINKS OR LAVATORIES, AND AT EXTERIOR LOCATIONS. EXTERIOR RECEPTACLES SHALL ALSO BE WATERPROOF.
- BONDING AND GROUNDING SHALL BE IN ACCORDANCE WITH NFPA 70:230-63, NFPA 250-23, 250-71 & 250-72.
- GROUND NEUTRAL IN ACCORDANCE WITH NFPA 70:250-23b.
- FUSES SHALL BE ITC CLASS K5, 250 VOLT, 200,000 AMP INTERRUPTING CAP.
- PROVIDE SERVICES OF A FIRE/SMOKE DETECTION AND ALARM COMPANY TO DESIGN AND INSTALL ALARM SYSTEM TO MEET REQUIREMENTS OF THE STATE FIRE MARSHALL.
- EXTERIOR LIGHTING SHALL BE SHADED OR INWARDLY DIRECTED IN SUCH A MANNER SO THAT NO DIRECT LIGHTING OR GLARE IS CAST BEYOND THE PROPERTY LINE. THE INTENSITY OF SUCH LIGHTING SHALL NOT EXCEED ONE FOOT CANDLE AS MEASURED AT THE ABUTTING PROPERTY LINE.
- ALL ELECTRICAL, MECHANICAL AND PLUMBING PENETRATING FIRE PARTITIONS SHALL BE FIRE CAULKED. (PENETRATIONS THROUGH RATED CONSTRUCTION SHALL BE SEALED WITH A MATERIAL CAPABLE OF PREVENTING THE PASSAGE OF FLAMES AND HOT GASES WHEN TESTED IN ACCORDANCE WITH ASTM-E814.)



in joint venture with:

DAMMON ENGINEERING, INC.

Architects & Engineers

Chief Architect: Kevin J. Kinchen, NCARB
 Chief Engineer: Brian Mistich, PE
 554 Old Spanish Trail
 Slidell, LA 70458

www.dammonengineering.com
 dammoneng@bellsouth.net
 Ph: 985.649.5832
 F: 985.641.5950

REVISIONS	BY

These documents are and shall remain the property of the architect and are intended for the sole use as indicated on these documents. The removal of the architect's seal or stamp from these documents unless otherwise provided by written approval of the architect, shall be a violation of law, (L.A. R.S. 37: Chapter 3, 1983) and such persons shall be subject to the penalties, fines and/or imprisonment as stated by Louisiana Law.

FRANK E. GERARVE, JR., ARCHITECT, L.L.C.
 A Professional Architectural Limited Liability Company
 Designers Planners Engineers

9108 CHRISTEN POINT PLACE,
 Telephone: (504) 737-2821

RIVER RIDGE, LOUISIANA 70123
 Facsimile: (504) 737-2822

Slidell Little Theatre
 2024 Nellie Drive
 Slidell, Louisiana 70458

DRAWN	JTL
CHECKED	C.K.D.
DATE	6/6/14
SCALE	NOTED
JOB NO.	
SHEET	
E-1	
OF SHEETS	

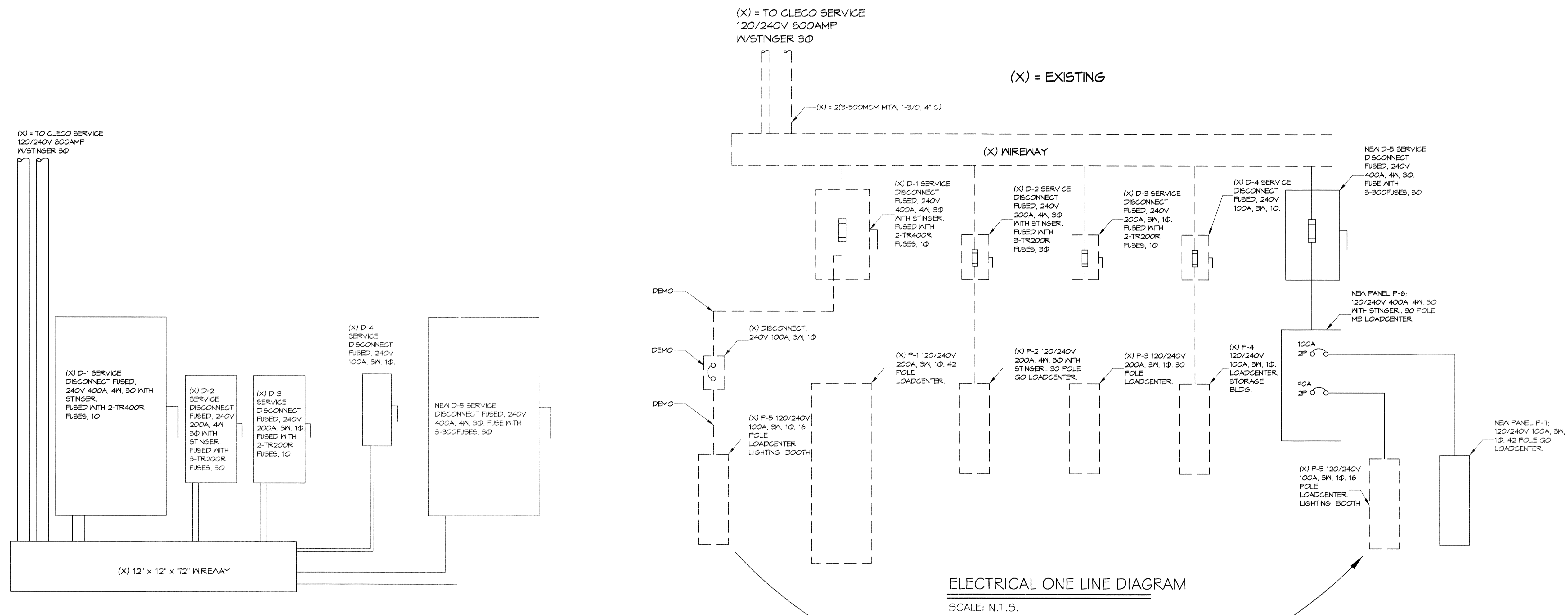
PANEL: NEW 3Ø PANEL P-6		VOLTAGE: 120/240V, 400A 3Ø, 4W						
LOCATION: UPSTAIRS SOUND AND LIGHT ROOM		ENCLOSURE: SURFACE MOUNTED, 400A MB, WEQUIP GND BAR						
FEEDER SOURCE: CLECO		22000 AIC						
CKT. NO.	THIN WIRE SIZE	LOAD DESCRIPTION	BREAKER	LOAD	BREAKER	LOAD DESCRIPTION	THIN WIRE SIZE	CKT. NO.
		LOCATION	AMP POLE	(KVA)	POLE AMP	LOCATION		
1				91.87				2
3	#2	NEW AC CONDENSING UNIT 1.5 TONS	80 3	140G4	3	90		4
5				91.87				6
7				140G4				8
9				140G4	3	90		10
11				140G4				12
13								14
15								16
17								18
19								20
21		SPARE	20 1		1	20		22
23		EXISTING P-5 1Ø PANEL LIGHTING BOOTH	2 100	12,240		4,800		24
25				12,240		4,920		26
27		SPACE	20 1					28
29		SPACE	20 1					30
				TOTAL CONNECTED 1Ø LOAD (KVA)=56,222				
				STINGER CONNECTED LOAD (KVA)=20,827				
				AØ=54,475 BØ=37,315 CØ=54,305				

PANEL: NEW 1Ø PANEL P-7		VOLTAGE: 120/240V, 200A 1Ø, 3W						
LOCATION: NEW BUILDING		ENCLOSURE: FLUSH MOUNTED, 100A MB, WEQUIPMENT GND BAR						
FEEDER SOURCE: 400A PANEL		22000 AIC						
CKT. NO.	THIN WIRE SIZE	LOAD DESCRIPTION	BREAKER	LOAD	BREAKER	LOAD DESCRIPTION	THIN WIRE SIZE	CKT. NO.
		LOCATION	AMP POLE	(KVA)	POLE AMP	LOCATION		
1	#12	RECEPTACLES IN THE DIT CORRIDOR	20 1	960				2
3	#12	RECEPTACLES IN THE MULTI-PURPOSE ROOM	20 1	960				4
5	#12	JUNCTION BOX FOR NEW SIGN	20 1	1,800				6
7	#12	JANITOR'S CLOSET, GP RECEPTACLE AND EXTERIOR W. P. GP RECEPTACLES	20 1	640				8
9	#12	2x2 FLUORESCENT LIGHTS IN DIT CORRIDOR 4 JANITOR'S CLOSET LIGHT	20 1	408				10
11		SPARE	20 1					12
13		SPARE	20 1					14
15		SPARE	20 1					16
				TOTAL CONNECTED LOAD (KVA)=9,720				
				AØ= 4,920 BØ= 4,800				

PANEL: EXISTING 1Ø PANEL P-5		VOLTAGE: 120/240V, 200A 1Ø, 3W						
LOCATION: UPSTAIRS SOUND AND LIGHT ROOM		ENCLOSURE: SURFACE MOUNTED ML, WEQUIPMENT GND BAR						
FEEDER SOURCE: 400A PANEL		22000 AIC						
CKT. NO.	THIN WIRE SIZE	LOAD DESCRIPTION	BREAKER	LOAD	BREAKER	LOAD DESCRIPTION	THIN WIRE SIZE	CKT. NO.
		LOCATION	AMP POLE	(KVA)	POLE AMP	LOCATION		
1				1,800				2
3		SPOT LIGHT RECEPTACLES	20 2	1,800				4
5		FRONT OUTSIDE LIGHTS		1,800				6
7		FRONT LOBBY RECP.		1,800				8
9		SPACE						10
11		SPACE						12
13		SPACE						14
15		SPACE						16
				TOTAL CONNECTED LOAD (KVA)=24,480				
				AØ= 12,240 BØ= 12,240				

ELECTRICAL PANEL SCHEDULES

SCALE: N.T.S.



ELECTRICAL ONE LINE DIAGRAM

SCALE: N.T.S.

ELECTRICAL ELEVATION

SCALE: N.T.S.



6/16/2014

In joint venture with:

DAMMON ENGINEERING, INC.
Architects & Engineers

Chief Architect: Kevin J. Kinchen, NCARB
Chief Engineer: Brian Mistic, PE
554 Old Spanish Trail
Slidell, LA 70458
dammoneng@bellsouth.net
PH: 985.649.5832
F: 985.641.5950

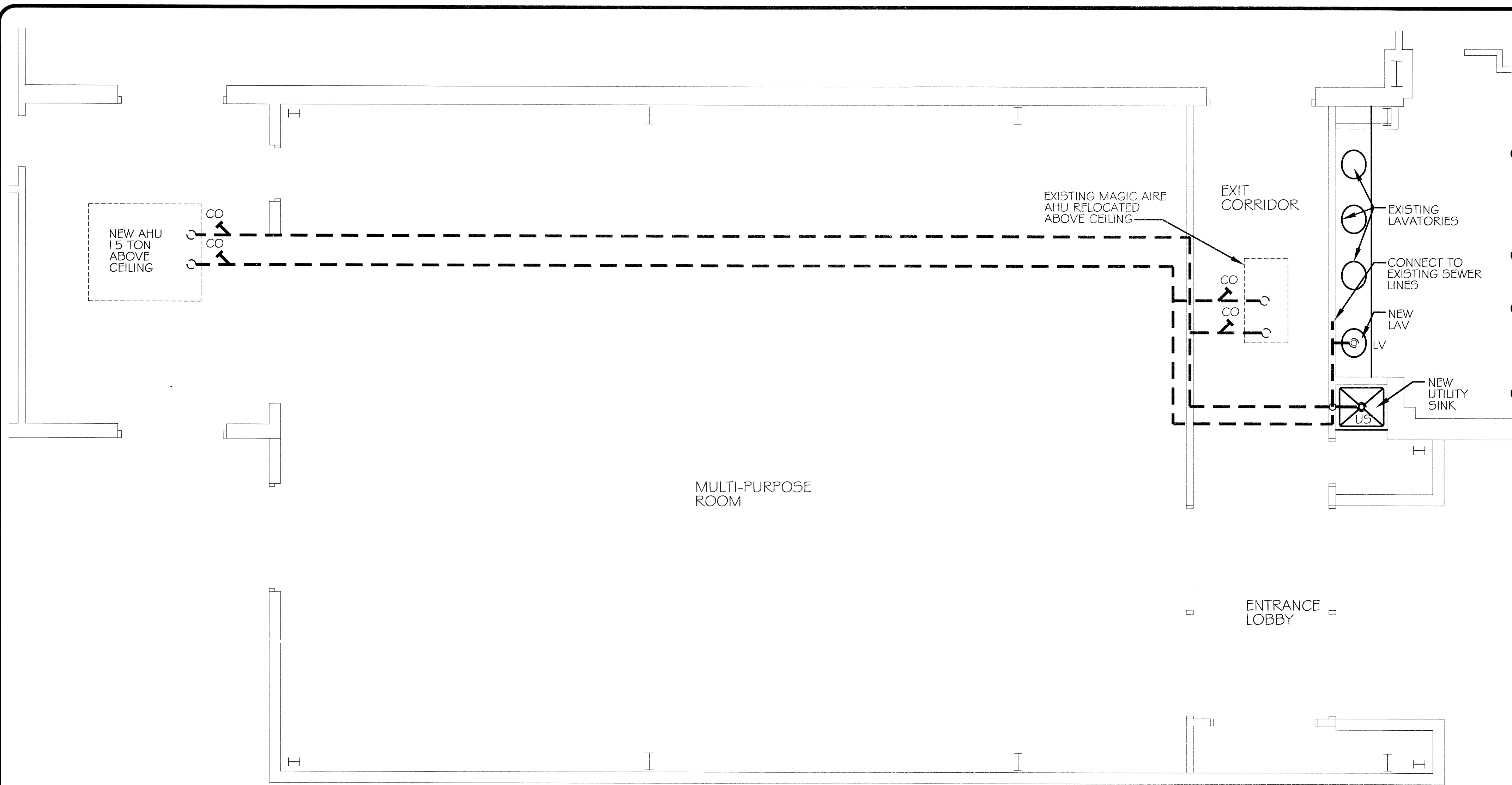
REVISIONS	BY

This document and all shall remain the property of the architect and are intended for the sole use as indicated on these documents. The removal of the architect's seal or stamp from these documents unless otherwise provided by written approval of the architect, shall be a violation of law, (L.A. R.S. 37: Chapter 3, 1983) and such persons shall be subject to the penalties, fines and or imprisonment as stated by Louisiana Law.

FRANK E. GERARVE, JR., ARCHITECT, L.L.C.
A Professional Architectural Limited Liability Company
Designers Planners Engineers
9108 CHRISTIEN POINT PLACE,
RIVER RIDGE, LOUISIANA 70123
Telephone: (504) 737-2821
Facsimile: (504) 737-2822

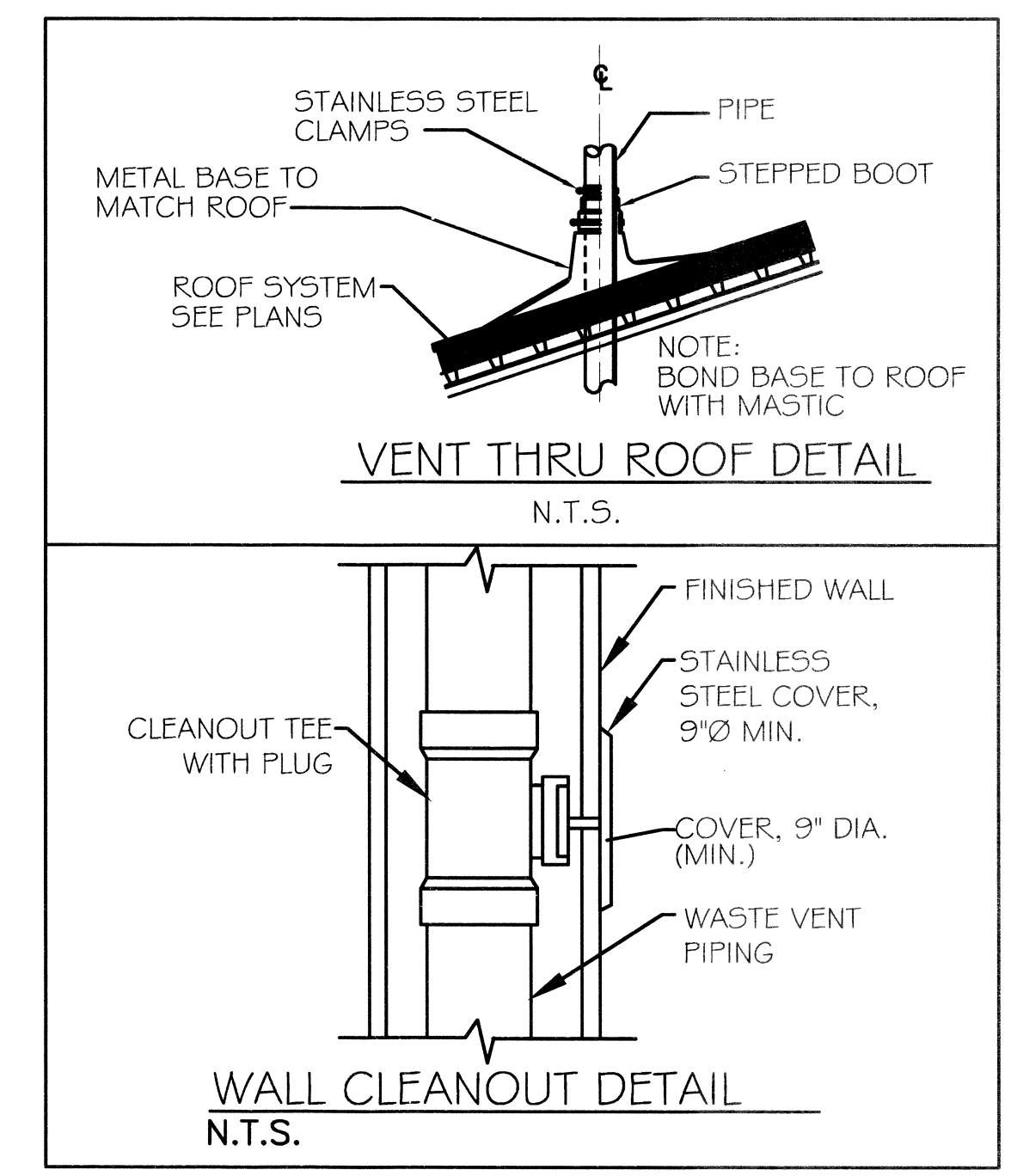
Slidell Little Theatre
2024 Nellie Drive
Slidell, Louisiana 70458

DRAWN: U.T.L.
CHECKED: C.K.D.
DATE: 6/6/14
SCALE: NOTED
JOB NO.:
SHEET: **E-3**



PLUMBING PLAN
SCALE: 1/4" = 1'-0"

MARK	DESCRIPTION	TYPE	ROUGH-IN-SIZES				NOTES
			WASTE	VENT	CW	H.W.	
LV	LAVATORY	DROP-IN TO MATCH EXISTING	2"	2"	1/2"	1/2"	
US	UTILITY SINK	FLOOR SINK	2"	2"	1/2"	1/2"	
AHU	AHU DRAIN	-	2"	2"	-	-	



PLUMBING GENERAL NOTES

- PLUMBING CONTRACTOR (P.C.) IS TO FURNISH AND INSTALL ALL FIXTURES FOR A COMPLETE OPERATING SYSTEM. THE SYSTEM SHALL INCLUDE HOT AND COLD WATER PIPING, SEWER AND VENT PIPING, INSULATION, WATER HEATER, HANGERS, VALVES & SUPPORTS WITHOUT ANY RESTRICTIONS TO VOLUME.
- P.C. SHALL PAY ALL NECESSARY FEES FOR UTILITY CONNECTIONS.
- ALL HANDICAP PLUMBING FIXTURES SHALL BE INSTALLED TO COMPLY WITH STATE AND LOCAL CODES. P.C. SHALL FURNISH AND INSTALL CODE COMPLIANT TRAP WRAP ON ALL EXPOSED WATER & WASTE LINES FOR ALL HANDICAP ACCESSIBLE DEVICES.
- P.C. SHALL VERIFY ALL ELEVATIONS AND SIZES PRIOR TO COMMENCING ANY WORK. PLUMBER TO VERIFY SLAB CONDITIONS (POST TENSION OR CONVENTIONAL) BEFORE COMMENCING WORK. WHERE A RENOVATION IS TO OCCUR, THE PLUMBING CONTRACTOR SHALL VISIT THE SITE TO DETERMINE THE EXTENT OF DEMOLITION REQUIRED, PRIOR TO SUBMITTING BID.
- PLUMBING CONTRACTOR SHALL PROVIDE AS-BUILT DRAWINGS TO THE GENERAL CONTRACTOR PRIOR TO FINAL PAYMENT.
- ALL WORK SHALL BE INSTALLED TO COMPLY WITH LOCAL & STATE PLUMBING CODE REQUIREMENTS, AND PER LOCAL HEALTH DEPARTMENT REQUIREMENTS.
- THE HOT WATER PRESSURE RELIEF MUST BE CONNECTED EITHER INDIRECTLY TO THE SANITARY SEWER OR DIRECTLY OUTSIDE.
- TEST ALL PIPING AT REQUIRED PRESSURE.
- ALL PLUMBING SHALL BE CLOSELY COORDINATED WITH STRUCTURAL SYSTEM, MECHANICAL SYSTEM AND ELECTRICAL TO INSURE NO TRADES WILL CONFLICT WITH EACH OTHER.
- DO NOT SCALE DRAWINGS. SEE ARCHITECTURAL DRAWINGS FOR EXACT LOCATIONS OF DOORS, WINDOWS, WALLS, FIXTURES, ETC.
- ALL WATER MAINS AND PIPING NOT SHOWN FOR CLARITY, ALL LOCATIONS SHALL BE FIELD VERIFIED. ALL PLUMBING LINES SHOWN ARE DIAGRAMATIC.
- ALL ELECTRICAL, MECHANICAL & PLUMBING PENETRATING FIRE PARTITIONS SHALL BE FIRE CAULKED. (PENETRATIONS THROUGH RATED CONSTRUCTION SHALL BE SEALED WITH A MATERIAL CAPABLE OF PREVENTING THE PASSAGE OF FLAMES AND HOT GASES WHEN TESTED IN ACCORDANCE WITH ASTM-E814.)

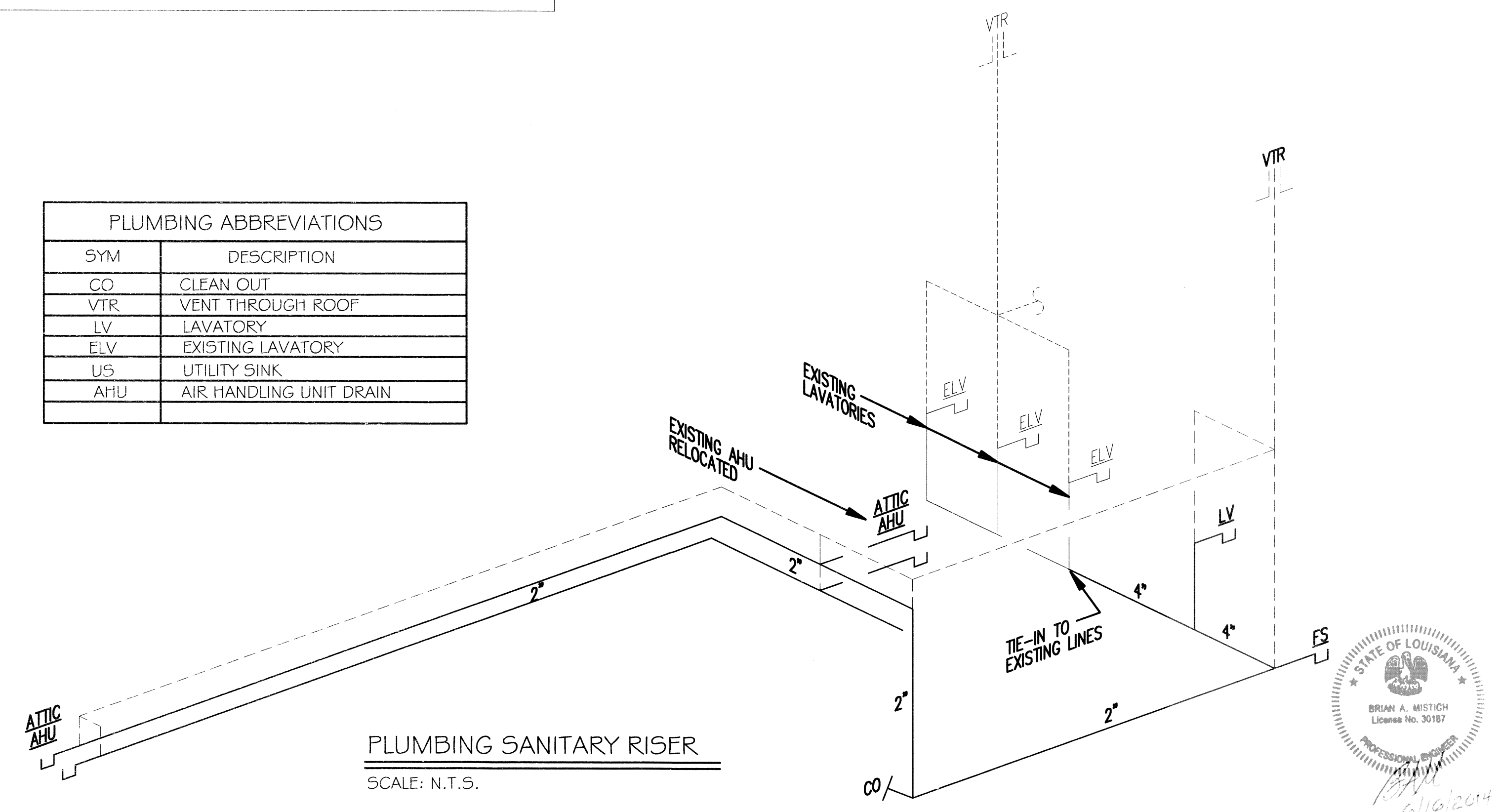
WASTE AND VENT PIPING:

- PLUMBING CONTRACTOR SHALL USE SERVICE WEIGHT CAST IRON PIPE WITH BELL AND SPIGOT ENDS AND ONE PIECE NEOPRENE INSERT TYPE GASKET. USE PVC SCHEDULE 40 OR ABB DIAV PIPES AND FITTINGS WHERE PERMITTED BY CODE. ALL PIPING ABOVE GRADE MAY HAVE HUBLESS FITTINGS. PLASTIC PIPING SHALL NOT BE USED IN RETURN AIR FLENUM. COORDINATE THIS REQUIREMENT WITH HVAC CONTRACTOR PRIOR TO INSTALLATION.
- CONTRACTOR SHALL FIELD VERIFY INVERT ELEVATIONS OF ALL EXISTING & NEW SANITARY SEWERS PRIOR TO ROUGH-IN.
- NEW SEWERAGE LINES 3-INCH AND SMALLER SHALL BE SLOPED 1/4" PER FOOT AND LINES 4-INCH AND LARGER SHALL BE SLOPED 1/8" PER FOOT.
- ELEVATION OF ALL FLOOR DRAINS SHALL BE HELD 1/2" BELOW FINISH FLOOR TILE.
- ALL CLEANOUTS SHALL BE INSTALLED FLUSH WITH FINISHED GRADE/FINISHED FLOORS.
- HOLD ALL PLUMBING VENTS A MINIMUM OF 10'-0" FROM OUTSIDE AIR INTAKES. WHERE STATE OR LOCAL CODES REQUIRE MORE SEPARATION, P.C. SHALL OFFSET TO MEET THE MORE STRINGENT CODE ON HVAC EQUIPMENT. COORDINATE LOCATION WITH M.C.

WATER PIPING:

- POTABLE WATER PIPING AND FITTINGS ABOVE GRADE SHALL BE ASTM B88 COPPER WATERTUBE, TYPE "L". HARD DRAWN WITH COPPER PRESSURE TYPE FITTINGS, ANSI B16.22. THE JOINTS SHALL BE SOLDERED TYPE USING ASTM B32, ALLOY GADE #5A (#5-5) SOLDER. DOMESTIC WATER PIPING BELOW GRADE SHALL BE TYPE "K" SOFT TEMPERED COPPER. NO JOINTS SHALL BE ALLOWED BELOW SLAB.
- INSTALL 1" FOAM RUBBER INSULATION ON ALL HOT AND COLD WATER PIPING ABOVE AND BELOW GRADE. ALL JOINTS IN INSULATION ARE TO BE TAPED.
- ALL DOMESTIC WATER PIPING SHALL BE DISINFECTED PRIOR TO USE BY BUILDING OCCUPANT. PLUMBING CONTRACTOR SHALL DISINFECT PER REQUIREMENTS OF LOCAL HEALTH DEPT. STATE/LOCAL PLUMBING CODE.
- ALL PLUMBING HOSE BIBS OR VALVES WITH THREADED CONNECTIONS SHALL BE PROVIDED WITH VACUUM BREAKERS AND APPROVED MEANS OF BACK-FLOW PREVENTION AS REQUIRED BY STATE AND LOCAL CODES.
- PROVIDE SHUT-OFF VALVES ON ALL EQUIPMENT AND STOP COCKS IN HOT AND COLD WATER PIPING FIXTURES.
- PLUMBING CONTRACTOR SHALL PROVIDE DIELECTRIC UNIONS AT ALL PIPING CONNECTIONS WHERE DISSIMILAR PIPING IS JOINED.
- PROVIDE WATER HAMMER ARRESTORS AND SHUT-OFF VALVES WITH STOP COCKS FOR ALL HOT AND COLD WATER PIPING FIXTURES.
- ALL HOT AND COLD WATER, WASTE, AND VENT PIPING TO BE SUPPORTED PER LOCAL PLUMBING CODE.
- PROVIDE TEMPERED HOT WATER DEVICES, SET TO 110° F.

PLUMBING ABBREVIATIONS	
SYM	DESCRIPTION
CO	CLEAN OUT
VTR	VENT THROUGH ROOF
LV	LAVATORY
ELV	EXISTING LAVATORY
US	UTILITY SINK
AHU	AIR HANDLING UNIT DRAIN



PLUMBING SANITARY RISER
SCALE: N.T.S.

in joint venture with:

DAMMON ENGINEERING, INC.
Architects & Engineers

Chief Architect: Kevin J. Kinchen, NCARB
Chief Engineer: Brian Mistich, PE
554 Old Spanish Trail
Slidell, LA 70458

www.dammonengineering.com
dammoneng@bellsouth.net
PH: 985.649.5832
F: 985.641.5990

REVISIONS	BY

This document and all shall remain the property of the architect and are intended for the sole use as indicated on these documents. The removal of the architect's seal or stamp from these documents unless otherwise provided by written approval of the architect, shall be a violation of law, (L.A. R.S. 37: Chapter 3, 1983) and such persons shall be subject to the penalties, fines and or imprisonment as stated by Louisiana Law.

FRANK E. GERARVE, JR., ARCHITECT, L.L.C.
A Professional Architectural Limited Liability Company
Designers Planners Engineers
9108 CHRISTEN POINT PLACE,
Slidell, Louisiana 70458
Telephone: (504) 737-2821
Facsimile: (504) 737-2822
RIVER RIDGE, LOUISIANA 70123
Facsimile: (504) 737-2822

Slidell Little Theatre
2024 Nellie Drive
Slidell, Louisiana 70458

DRAWN: J.T.L.
CHECKED: C.K.D.
DATE: 6/6/14
SCALE: NOTED
JOB NO.:
SHEET: P-1