

REVISIONS	BY

These documents are and shall remain the property of the architect and are intended for the sole use as indicated on these documents. The removal of the architect's seal or stamp from these documents unless otherwise provided by written approval of the architect, shall be a violation of law, (L.A. R.S. 37, Chapter 3, 1983) and such persons shall be subject to the penalties, fines and or imprisonment as stated by Louisiana Law.

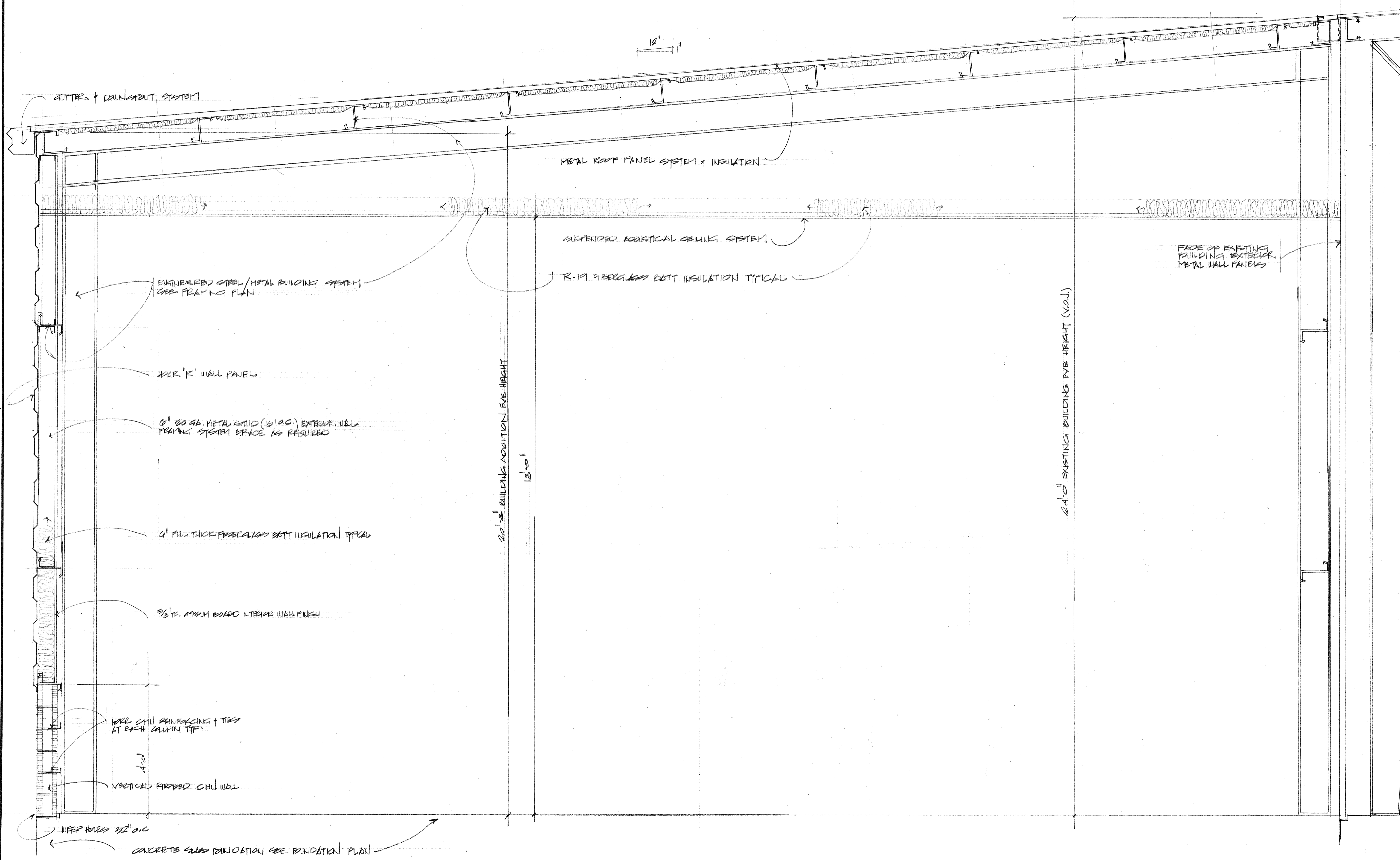
FRANK E. GERARVE, JR., ARCHITECT, L.L.C.
 A Professional Architectural Limited Liability Company
 Designers
 Planners
 Engineers

9108 CHERTIEN POINT PLACE,
 Telephone: (504) 737-3821

RIVER RIDGE, LOUISIANA 70123
 Facsimile: (504) 737-3822

Slidell Little Theatre
 2024 Nellie Drive
 Slidell, Louisiana 70458

DRAWN
CHECKED
DATE
SCALE
JOB NO.
SHEET
5
OF SHEETS



BUILDING CROSS SECTION

1/4" = 1'-0"