

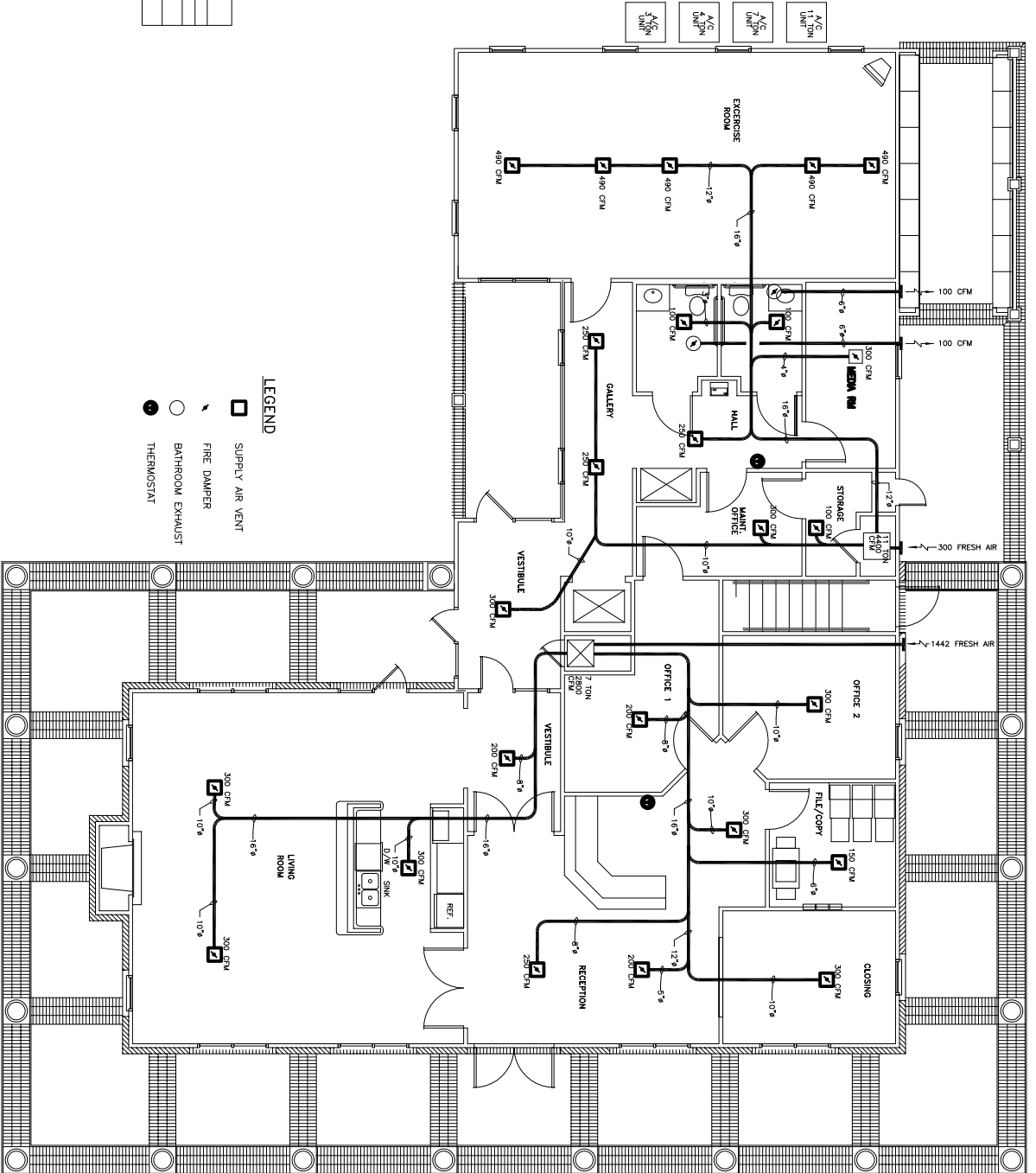
NOTES

- 1 EXHAUST FAN EQUAL TO BROAN MODEL NO. 1100 100 CFM OR EQUAL. FAN SHALL BE CONTROLLED BY SWITCH ON WALL AT LIGHT SWITCH. PROVIDE BACK DRAFT DAMPER AND FIRE DAMPER.
- 2 PROVIDE AND INSTAL WATER PROOF GRILLE IN OUTSIDE WALL FOR TOILET EXHAUST.
- 3 DRYER DISCHARGE GRILLE PER MFG.'S REQUIREMENTS. BACK DRAFT DAMPER MUST BE WEATHER AND INSECT PROOF.
- 4 EXHAUST DISCHARGE GRILLE PER MFG.'S REQUIREMENTS.
- 5 ALL SIZES SHOWN FOR DUCTWORK IS CLEAR INSIDE DIMENSIONS
- 6 ROUND FLEXIBLE DUCT TO BE UL-181 CLASS 1 AIR DUCT MATERIAL.
- 7 PROVIDE UL1 LISTED 1250°F FROSTKIT IN RETURN AIRWAY EACH STAGE UNDER FAN TO SHUT DOWN FAN IN THE EVENT OF A FIRE.
- 8 ALL SUPPLY AIR VENTS SHALL BE EQUIPPED WITH FIRE DAMPERS (CONNECTED TO THE BUILDING FIRE ALARM SYSTEM) AND AIR CONTROL DAMPERS.
- 9 ALL AIR HANDLING SYSTEMS SHALL BE BALANCED TO ASSURE PROPER AIR FLOWS PER PLAN.
- 10 ALL THERMOSTATS TO BE AUTOMATIC CHANGEOVER WITH HEAT-OFF-COOL SWITCH
- 11 LOCATION OF OUTDOOR UNITS AS PER ARCHITECT'S RECOMMENDATION. MECHANICAL CONTRACTOR SHALL RECOMMEND CONCRETE REINFORCED PAD FOR EACH CONDENSING UNIT.
- 12 REFRIGERANT LINES SHALL BE SIZED BY UNIT MANUFACTURER AND INSTALLED ACCORDING TO INSTRUCTIONS.
- 13 THE HVAC SYSTEM SHALL BE CONSTRUCTED IN ACCORDANCE WITH NFPA 101(1997), SECTION 7-2.

A/C UNIT SCHEDULE				COMMENTS
NO.	TOTAL BTU	O.A. CFM	HEAT (KW)	
1	102,000	4,400	1.442	
2	84,000	2,800	1.442	

* HEATER SHALL BE 3 STAGE UNIT

EXHAUST FAN SCHEDULE			
LOC	CFM	VOLTAGE	TYPE
TOILETS	100	120	VENT/LIGHT
			BROAN



LEGEND

- SUPPLY AIR VENT
- ▬ FIRE DAMPER
- BATHROOM EXHAUST
- THERMOSTAT

FIRST FLOOR LEASING OFFICE HVAC PLAN
SCALE: 1/4" = 1'-0"

<p>06</p> <p style="font-size: 2em; font-weight: bold;">M1</p>	<p>GRAND POINTE APARTMENTS</p> <p style="font-size: 1.5em; font-weight: bold;">DAMMON ENGINEERING, INC.</p> <p>1095 FLORIDA AVENUE 985-649-5832 SLIDELL, LA. 70458 DAMMONENGINEERING.COM</p>	<p>THE BRYAN COMPANY</p> <p>GRAND POINTE KALISTE SALOOM RD. LAFAYETTE, LA.</p>
<p>SCALE/S NOTED</p> <p>FILE:</p> <p>JOB NO.</p> <p>DATE: 03-29-05</p> <p>SHEET</p>		