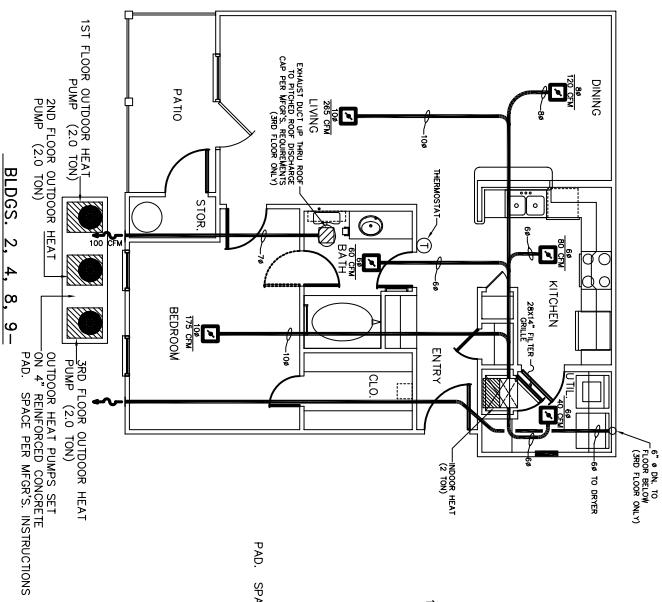


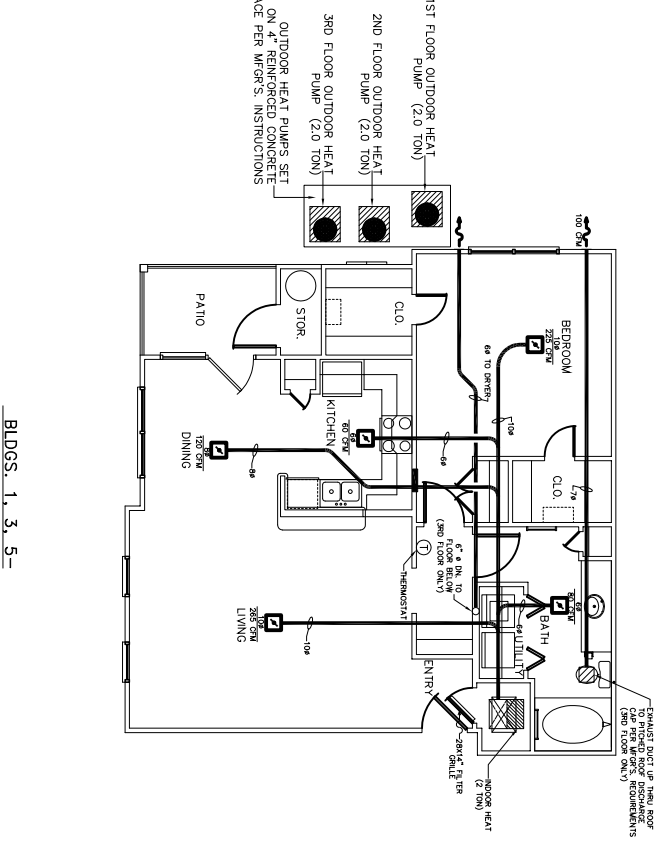
- 1 EXHAUST FAN EQUAL TO BROWN MODEL NO. L100 100 CFM WITH BACK DRAFT DAMPER AND FIRE DAMPER MODEL NO. R-1. FAN SHALL BE CONTROLLED BY SWITCH ON WALL AT LIGHT SWITCH.
- 2 PROVIDE AND INSTALL WATER PROOF GRILLE IN EXHAUST DUCT UP THROUGH ROOF.
- 3 DRYER DISCHARGE GRILLE PER MFG.'S REQUIREMENTS. BACK DRAFT DAMPER MUST BE WEATHER AND INSECT PROOF.
- 4 EXHAUST DISCHARGE GRILLE PER MFG.'S REQUIREMENTS. ALL SIZES SHOWN FOR DUCTWORK ARE CLEAR INSIDE.
- 5 ROUND FLEXIBLE DUCT TO BE UL-181, CLASS 1.
- 6 AIR DUCT MATERIAL.
- 7 PROVIDE U.L. LISTED 1250°F FIRESTAT IN RETURN DUCT OF EACH SYSTEM UNDER 2000 CFM TO SHUT OFF FLOW OF AIR.
- 8 ALL SUPPLY AIR VENTS SHALL BE EQUIPPED WITH FIRE DAMPERS AND AIR CONTROL DAMPERS.
- 9 ALL AIR HANDLING SYSTEMS SHALL BE BALANCED.
- 10 ALL THERMOSTATS TO BE AUTOMATIC CHANGEOVER WITH HEAT-OFF-COOL SWITCH MOUNTED 48" A.F.F. MAX.
- 11 MECHANICAL CONTRACTOR SHALL WITH PROJECT MANAGER AND PROVIDE A 4" CONCRETE REINFORCED PAD FOR EACH OUTDOOR HEAT PUMP UNIT.
- 12 REFRIGERANT LINES SHALL BE SIZED BY UNIT MANUFACTURER AND INSTALLED ACCORDING TO INSTRUCTIONS.

**NOTES**

**1 BEDROOM PLAN A 1ST FLOOR HVAC PLAN**  
 BLDGS. 2, 4, 8, 9  
 1ST FLOOR SHOWN, 2ND & 3RD FLOORS SIMILAR  
 SCALE: 1/4" = 1'-0"



**1 BEDROOM PLAN B 1ST FLOOR HVAC PLAN**  
 BLDGS. 1, 3, 5  
 1ST FLOOR SHOWN, 2ND & 3RD FLOOR SIMILAR  
 SCALE: 1/4" = 1'-0"



**MECHANICAL SPECIFICATIONS**  
 2 TON HEAT PUMP

EQUIPMENT SELECTIONS	
INDOOR HEAT PUMP	AGE B182510
AIR FLOW	800 CFM
ELECTRICAL SPECIFICATIONS	200V-1P
UNIT M.C.A. (INCLUDING HEAT)	55.0 AMPS
REV. CYCLE HEAT CAPACITY	3170 BTUH
AUX. HEAT CAPACITY	10.0 KW
OUTDOOR HEAT PUMP	DUOLINE JPH1824
ELECTRICAL SPECIFICATIONS	200V-1P
UNIT M.C.A.	16.3 AMPS
LOADING CAPACITY	24000 BTUH
SEER	10.0

**LEGEND**

- SUPPLY AIR VENT
- FIRE DAMPER
- BATHROOM EXHAUST

<p><b>GRAND POINTE APARTMENTS</b></p> <p><b>DAMMON ENGINEERING, INC.</b></p> <p>1095 FLORIDA AVENUE 985-649-5832 SLIDELL, LA. 70458</p> <p>DAMMONENGINEERING.COM</p>	<p><b>THE BRYAN COMPANY</b></p> <p>GRAND POINTE KALISTE SALOOM ROAD LAFAYETTE, LA.</p>	<p>SCALE AS NOTED</p> <p>FILE: 108 NO.1674</p> <p>DATE: 04-01-05</p> <p>SHEET</p> <p style="font-size: 2em; font-weight: bold;">M3</p>
--	--	--