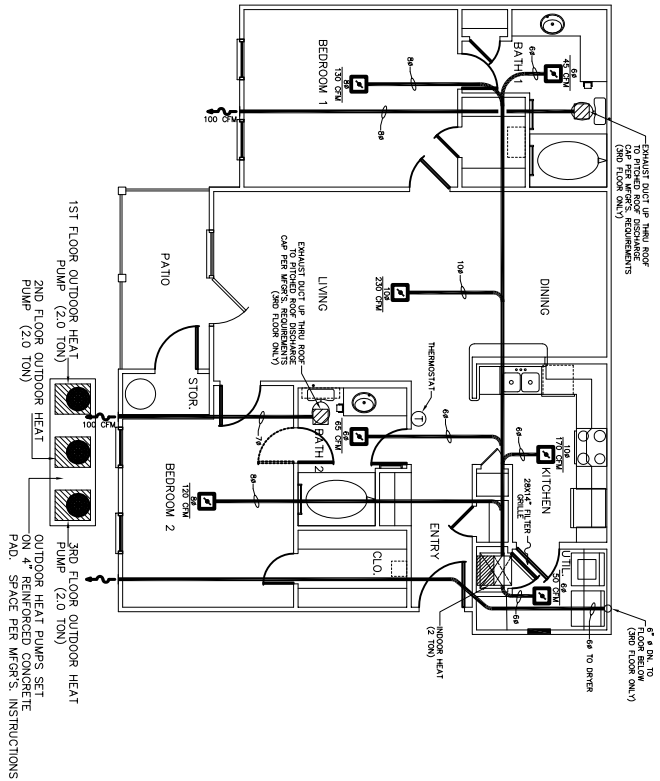


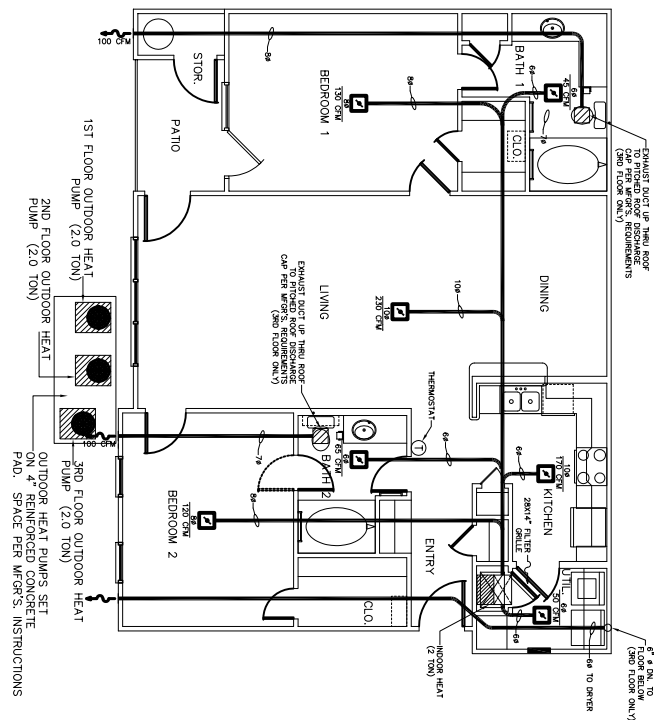
- 1 EXHAUST FAN EQUAL TO BROAN MODEL NO. L100, 100 CFM. FAN SHALL BE CONTROLLED BY SWITCH ON WALL AT LIGHT SWITCH.
- 2 PROVIDE AND INSTALL WATER PROOF GRILLE IN OUTSIDE WALL FOR TOILET EXHAUST'S REQUIREMENTS.
- 3 BACK DRAFT DAMPER MUST BE WEATHER AND INSECT PROOF. EXHAUST DISCHARGE GRILLE PER MFG.'S REQUIREMENTS.
- 4 ALL SIZES SHOWN FOR DUCTWORK ARE CLEAR INSIDE DIMENSIONS. DUCT TO BE UL-181, CLASS 1.
- 5 AIR DUCT MATERIAL _____
- 6 PROVIDE U.L. LISTED 1250°F FRESH AIR IN RETURN AIR OF EACH SYSTEM UNDER 2000 CFM TO SHUT DOWN FAN IN THE EVENT OF A FIRE.
- 7 FIRE DAMPERS AND AIR CONTROL DAMPERS. ALL AIR HANDLING SYSTEMS SHALL BE BALANCED TO ASSURE PROPER AIR FLOWS PER PLAN.
- 8 ALL THERMOSTATS TO BE AUTOMATIC CHANGEOVER MANAGER AND PROVIDE A 4" CONCRETE REINFORCED MECHANICAL CONTRACTOR SHALL WITH PROJECT MANAGER AND PROVIDE A 4" CONCRETE REINFORCED PAD AT EACH CONDENSING UNIT.
- 9 ALL CONDENSING UNITS TO BE INSTALLED BY UNIT MANUFACTURER AND INSTALLED ACCORDING TO INSTRUCTIONS.

NOTES

**BLDGS. 1, 3-
2 BEDROOM PLAN A- 1ST FLOOR HVAC PLAN**
1ST FLOOR SHOWN, 2ND & 3RD FLOOR SIMILAR, BLDGS. 1 - 9
SCALE: 1/4" = 1'-0"



**BLDGS. 1, 2, 4, 5, 6, 7, 8, 9-
2 BEDROOM PLAN B- 1ST FLOOR HVAC PLAN**
1ST FLOOR SHOWN, 2ND & 3RD FLOOR SIMILAR, BLDGS. 1 - 9
SCALE: 1/4" = 1'-0"



MECHANICAL SPECIFICATIONS
2 TON HEAT PUMP

| EQUIPMENT SELECTIONS | |
|------------------------------|------------------------------------|
| INDOOR HEAT PUMP | AGE 80/24/10 |
| AIR FLOW | 800 CFM |
| ELECTRICAL SPECIFICATIONS | 240V-1ϕ |
| UNIT M.C.A. (INCLUDING HEAT) | 55.0 AMPS |
| REV. CIRC. HEAT CAPACITY | 2470 BTUH |
| MAX. HEAT CAPACITY | 18.0 KW |
| OUTDOOR HEAT PUMP | DUCCHE 1P/18/24 |
| ELECTRICAL SPECIFICATIONS | 240V-1ϕ |
| UNIT M.C.A. | 16.3 AMPS |
| REV. CIRC. HEAT CAPACITY | 2400 BTUH |
| COOLING CAPACITY | 24000 BTUH - SE2F ₁ 103 |

LEGEND

- SUPPLY AIR VENT
- FIRE DAMPER
- BATHROOM EXHAUST

| | | |
|------------------------|---|---|
| OF M4 | <p>GRAND POINTE APARTMENTS</p> <p>DAMMON ENGINEERING, INC.</p> <p>1095 FLORIDA AVENUE 985-649-5882 SLIDELL, LA. 70458 DAMMONENGINEERING.COM</p> | <p>THE BRYAN COMPANY</p> <p>GRAND POINTE KALISTE SALOOM ROAD LAFAYETTE, LA.</p> |
| SCALE: AS NOTED | FILE: | JOB NO: 1674 |
| DATE: 04-01-05 | SHEET | JOB NO: 1674 |