

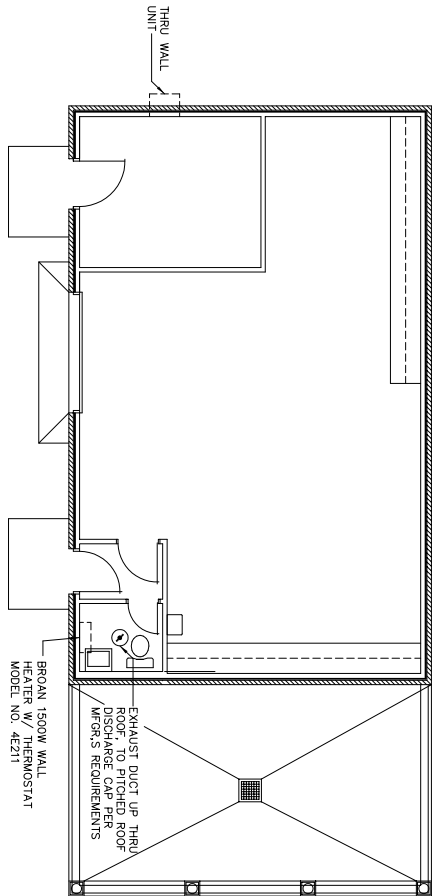
GAZEBRO BUILDING HVAC PLAN
SCALE: 1/4" = 1'-0"

MECHANICAL EQUIPMENT SCHEDULE

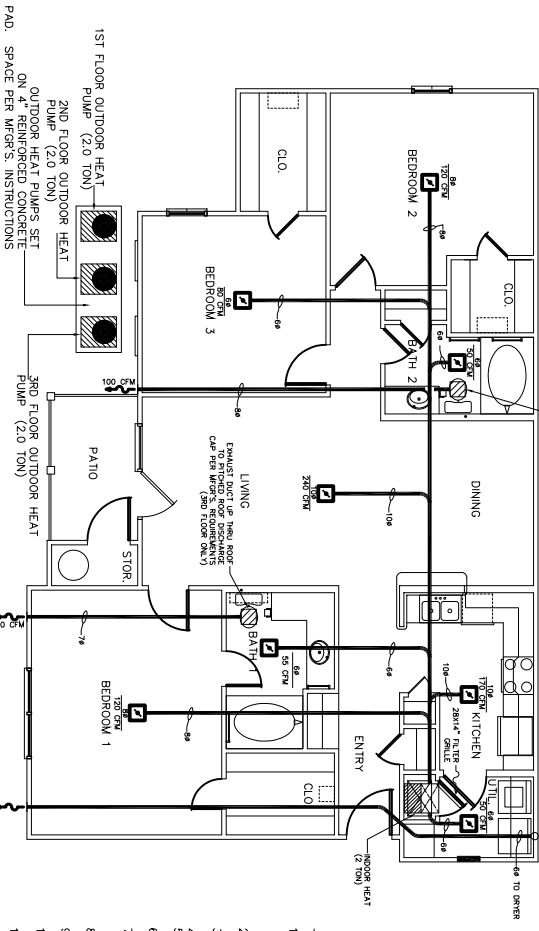
WALL HEATED HEATER FROM W/ADJUSTABLE CONTROL, MOUNT 6'-0" A.F.F.

WALL HEATED HEATER FROM W/ADJUSTABLE CONTROL, MOUNT 6'-0" A.F.F.

VENTILATION FAN AND W/VS-68 COMBINATION TIMER/ON/OFF SWITCH, BACK SPLIT DAMPER & WEATHER AND INSECT PROOF CAP, FIELD VERIFY.



MAINTENANCE BUILDING HVAC PLAN
SCALE: 1/4" = 1'-0"



BLDGS. 2, 3, 4, 6, 7, 8 -
3 BEDROOM 1ST FLOOR HVAC PLAN
1ST FLOOR SHOWN, 2ND & 3RD FLOORS SIMILAR
SCALE: 1/4" = 1'-0"

- NOTES**
- EXHAUST FAN EQUAL TO BROWN MODEL NO. 100 100 CFM WITH 1/2" OPERATING CLEARANCE AND FIRE RATED DOOR NO. R-1. FAN SHALL BE CONTROLLED BY SWITCH ON WALL AT LIGHT SWITCH.
 - PROVIDE AND INSTALL WATER PROOF GRILLE IN DRYER DISCHARGE GRILLE PER MFG'S REQUIREMENTS.
 - BACK DRAFT DAMPER MUST BE WEATHER AND INSECT PROOF.
 - EXHAUST DISCHARGE GRILLE PER MFG'S REQUIREMENTS.
 - ALL SIZES SHOWN FOR DUCTWORK ARE CLEAR INSIDE DIMENSIONS.
 - CONDENSIBLE DUCT TO BE UL-181, CLASS 1, AIR DUCT MATERIAL.
 - PROVIDE U.L. LISTED 1250F FIRESTAT IN RETURN AIR OF EACH SYSTEM UNDER 2000 CFM TO SHUT OFF FAN IN CASE OF FIRE.
 - ALL SUPPLY AIR FILTERS SHALL BE EQUIPPED WITH FIRE DAMPERS AND AIR CONTROL DAMPERS.
 - ALL AIR HANDLING SYSTEMS SHALL BE BALANCED TO ASSURE PROPER AIR FLOWS PER PLAN.
 - CONDENSING UNIT SHALL BE FIELD VERIFY (SEEWER WITH HEAT-OFF-COOL SWITCH MOUNTED 48" A.F.F. MECHANICAL CONTRACTOR SHALL COORDINATE FINAL LOCATION OF CONDENSING UNIT WITH PROJECTE MANAGER AND PROVIDE A 4" CONCRETE REINFORCED CONCRETE CURB AND FOUNDATION FOR CONDENSING UNIT. REFRIGERANT LINES SHALL BE SIZED BY UNIT MANUFACTURER AND INSTALLED ACCORDING TO INSTRUCTIONS.

MECHANICAL SPECIFICATIONS
2 TON HEAT PUMP

EQUIPMENT SELECTIONS	400 5024510
INDOOR HEAT PUMP	800 078
AIR FLOW	240-18
ELECTRICAL SPECIFICATIONS	55.0 AMPS
UNIT M.C.A. (INCLUDING HEAT)	3100 BTUH
REV. CYCLE HEAT CAPACITY	100.0 KW
A.I.K. HEAT CAPACITY	100.0 KW
OUTDOOR HEAT PUMP	DUCKETT JH10824
UNIT M.C.A.	16.3 AMPS
ELECTRICAL SPECIFICATIONS	240V-18
CONDENSING CAPACITY	24000 BTUH
SEER	10.0

- LEGEND**
- SUPPLY AIR VENT
 - FIRE DAMPER
 - BATHROOM EXHAUST

OR M6	GRAND POINTE APARTMENTS DAMMON ENGINEERING, INC. 1095 FLORIDA AVENUE 985-649-5832 SLIDELL, LA. 70458 DAMMONENGINEERING.COM	THE BRYAN COMPANY GRAND POINTE KALISTE SALOOM ROAD LAFAYETTE, LA.	<p>SCALE: AS NOTED</p> <p>FILE: _____</p> <p>JOB NO: 1674</p> <p>DATE: 04-01-05</p> <p>SHEET</p>
------------------------	---	--	--