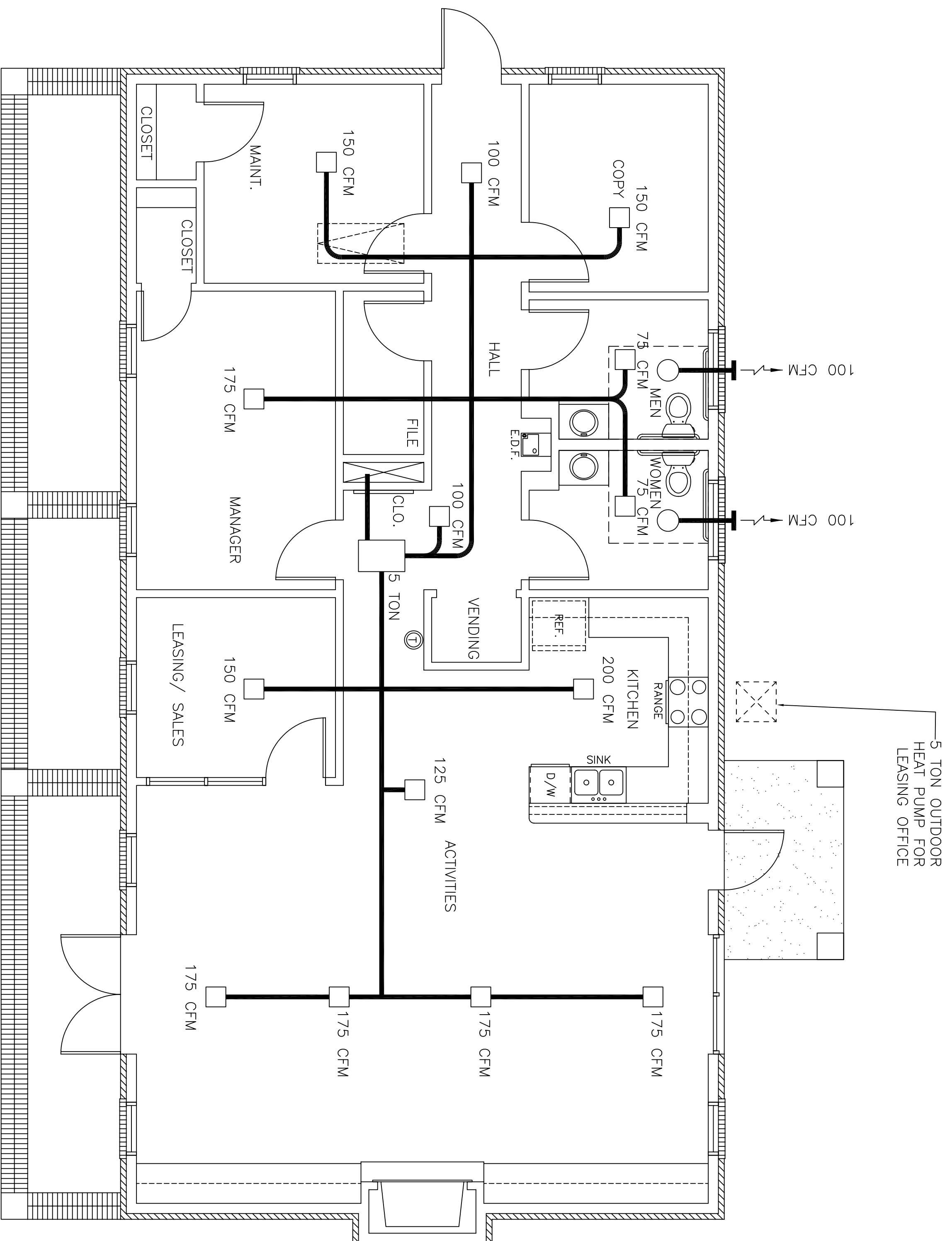


**NOTES**

- 1 EXHAUST FAN EQUAL TO BROAN MODEL NO. L100 100 CFM OR EQUAL. FAN SHALL BE CONTROLLED BY SWITCH ON WALL AT LIGHT SWITCH. PROVIDE BACK DRAFT DAMPER AND FIRE DAMPER.
- 2 PROVIDE AND INSTALL WATER PROOF GRILLE IN OUTSIDE WALL FOR TOILET EXHAUST.
- 3 DRYER DISCHARGE GRILLE PER MFR.'S REQUIREMENTS. BACK DRAFT DAMPER MUST BE WEATHER AND INSECT PROOF.
- 4 EXHAUST DISCHARGE GRILLE PER MFG.'S REQUIREMENTS.
- 5 MECHANICAL CONTRACTOR SHALL SIZE ALL DUCTWORK.
- 6 ROUND FLEXIBLE DUCT TO BE UL-181, CLASS 1, AIR DUCT MATERIAL.
- 7 PROVIDE U.L. LISTED 1250°F FIRESTAT IN RETURN AIR OF EACH SYSTEM UNDER 2000 CFM TO SHUT DOWN FAN IN THE EVENT OF A FIRE.
- 8 ALL SUPPLY AIR VENTS SHALL BE EQUIPPED WITH FIRE DAMPERS (CONNECT TO THE BUILDING FIRE ALARM SYSTEM AND AIR CONTROL DAMPERS WHERE APPLICABLE.)
- 9 ALL AIR HANDLING SYSTEMS SHALL BE BALANCED TO ASSURE PROPER AIR FLOWS PER PLAN.
- 10 ALL THERMOSTATS TO BE AUTOMATIC CHANGEOVER WITH HEAT-OFF-COOL SWITCH
- 11 LOCATION OF OUTDOOR UNITS AS PER ARCHITECT'S RECOMMENDATION. MECHANICAL CONTRACTOR SHALL PROVIDE A 4" THK. CONCRETE REINFORCED PAD FOR CONDENSING UNIT.
- 12 REFRIGERANT LINES SHALL BE SIZED BY UNIT MANUFACTURER AND INSTALLED ACCORDING TO INSTRUCTIONS.
- 13 THE HVAC SYSTEM SHALL BE CONSTRUCTED IN ACCORDANCE WITH NFPA 101(1997).



- LEGEND**
- SUPPLY AIR VENT
  - ▤ FIRE DAMPER
  - BATHROOM EXHAUST
  - ⊙ THERMOSTAT

**LEASING OFFICE HVAC PLAN**  
SCALE: 1/4" = 1'-0"

A/C UNIT SCHEDULE						COMMENTS	
NO.	TOTAL BLU	CFM	O.A.	HEAT (KW)*	ELECTRICAL VOLTAGE MCA	CKT BRKR	
1	60,000 5 TON	2000	205	10	240V,1ø	-	

\* HEATER SHALL BE 3 STAGE UNIT

EXHAUST FAN SCHEDULE					
LOC	CFM	VOLTAGE	TYPE	MANF.	
TOILETS	75	120	VENT/LIGHT	BROAN	