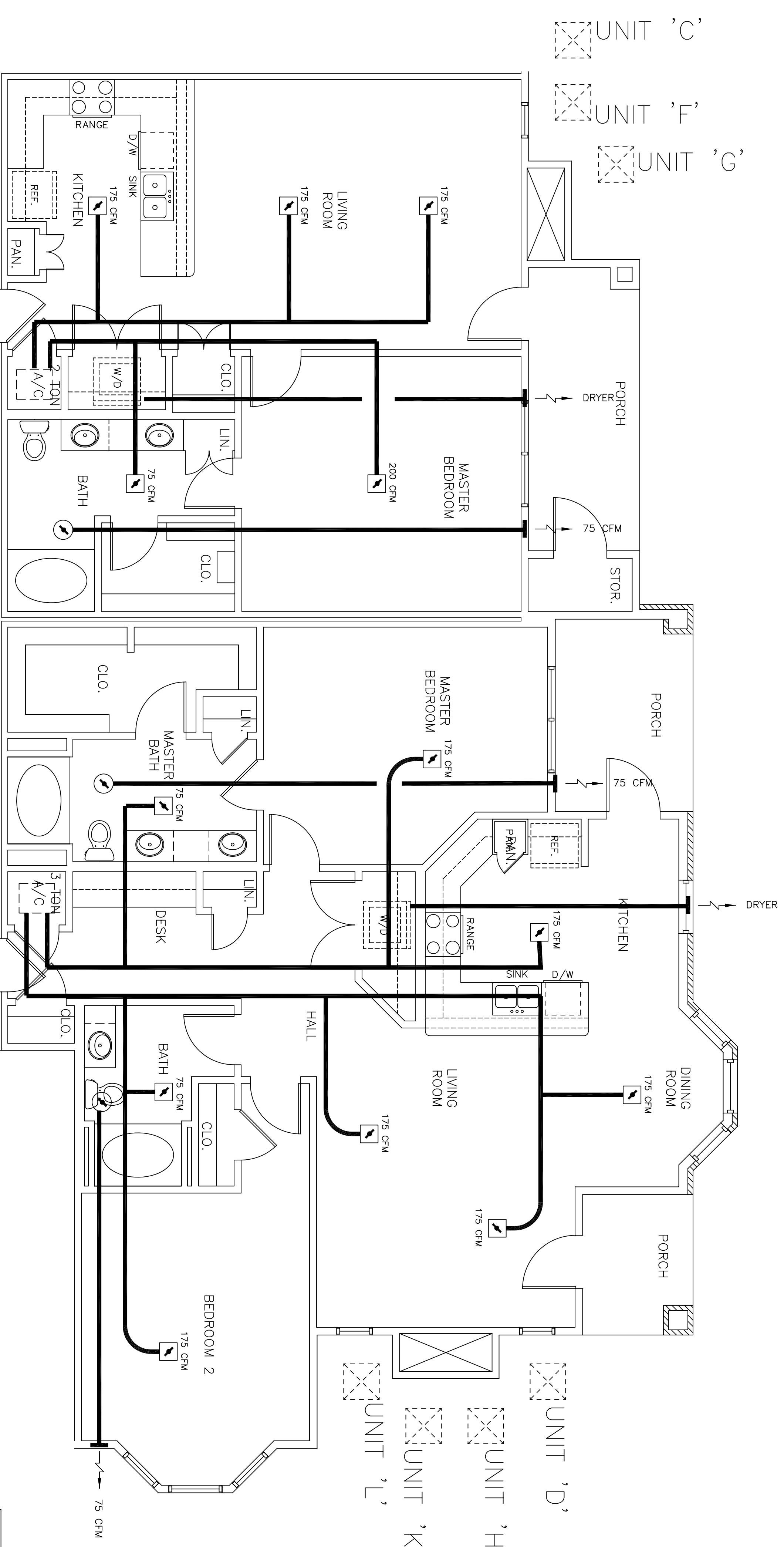


- LEGEND**
- SUPPLY AIR VENT
 - ⚡ FIRE DAMPER
 - BATHROOM EXHAUST
 - ⊕ THERMOSTAT

NOTES

- 1 EXHAUST FAN EQUAL TO BROAN MODEL NO. L100 100 CFM OR EQUAL. FAN SHALL BE CONTROLLED BY SWITCH ON WALL AT LIGHT SWITCH. PROVIDE BACK DRAFT DAMPER AND FIRE DAMPER.
- 2 PROVIDE AND INSTALL WATER PROOF GRILLE IN OUTSIDE WALL FOR TOILET EXHAUST.
- 3 DRYER DISCHARGE GRILLE PER MFR.'S REQUIREMENTS. BACK DRAFT DAMPER MUST BE WEATHER AND INSECT PROOF.
- 4 EXHAUST DISCHARGE GRILLE PER MFG.'S REQUIREMENTS.
- 5 MECHANICAL CONTRACTOR SHALL SIZE ALL DUCTWORK.
- 6 ROUND FLEXIBLE DUCT TO BE UL-181, CLASS 1, AIR DUCT MATERIAL.
- 7 PROVIDE U.L. LISTED 1250°F FIRESTAT IN RETURN AIR OF EACH SYSTEM UNDER 2000 CFM TO SHUT DOWN FAN IN THE EVENT OF A FIRE.
- 8 ALL SUPPLY AIR VENTS SHALL BE EQUIPPED WITH FIRE DAMPERS (CONNECT TO THE BUILDING FIRE ALARM SYSTEM AND AIR CONTROL DAMPERS WHERE APPLICABLE.)
- 9 ALL AIR HANDLING SYSTEMS SHALL BE BALANCED TO ASSURE PROPER AIR FLOWS PER PLAN.
- 10 ALL THERMOSTATS TO BE AUTOMATIC CHANGEOVER WITH HEAT-OFF-COOL SWITCH
- 11 LOCATION OF OUTDOOR UNITS AS PER ARCHITECTS RECOMMENDATION. MECHANICAL CONTRACTOR SHALL PROVIDE A 4" THK. CONCRETE REINFORCED PAD FOR CONDENSING UNIT.
- 12 REFRIGERANT LINES SHALL BE SIZED BY UNIT MANUFACTURER AND INSTALLED ACCORDING TO INSTRUCTIONS.
- 13 THE HVAC SYSTEM SHALL BE CONSTRUCTED IN ACCORDANCE WITH NFPA 101(1997).



MECHANICAL SPECIFICATIONS
 2 TON HEAT PUMP

EQUIPMENT SELECTIONS	
INDOOR HEAT PUMP	ADP BU24210
AIR FLOW	800 CFM
ELECTRICAL SPECIFICATIONS:	240V-1Ø
UNIT M.C.A. (INCLUDING HEAT)	55.0 AMPS
REV. CYCLE HEAT CAPACITY	34120 BTUH
AUX. HEAT CAPACITY	10.0 KW
OUTDOOR HEAT PUMP	DUCANE HP10B24
ELECTRICAL SPECIFICATIONS:	240V-1Ø
UNIT M.C.A.	16.3 AMPS
COOLING CAPACITY	24000 BTUH S.E.E.R. 13.0

UNIT 'C'

UNIT 'D'

UNITS C & D HVAC PLAN

SCALE: 1/4" = 1'-0"

MECHANICAL SPECIFICATIONS
 3 TON HEAT PUMP

EQUIPMENT SELECTIONS	
INDOOR HEAT PUMP	ADP BU36110
AIR FLOW	1200 CFM
ELECTRICAL SPECIFICATIONS:	240V-1Ø
UNIT M.C.A. (INCLUDING HEAT)	60.0 AMPS
REV. CYCLE HEAT CAPACITY	34120 BTUH
AUX. HEAT CAPACITY	10.0 KW (41.6A)
OUTDOOR HEAT PUMP	DUCANE HP10B36
ELECTRICAL SPECIFICATIONS:	240V-1Ø
UNIT M.C.A.	23.9 MCA
COOLING CAPACITY	34400 BTUH S.E.E.R. 13.0