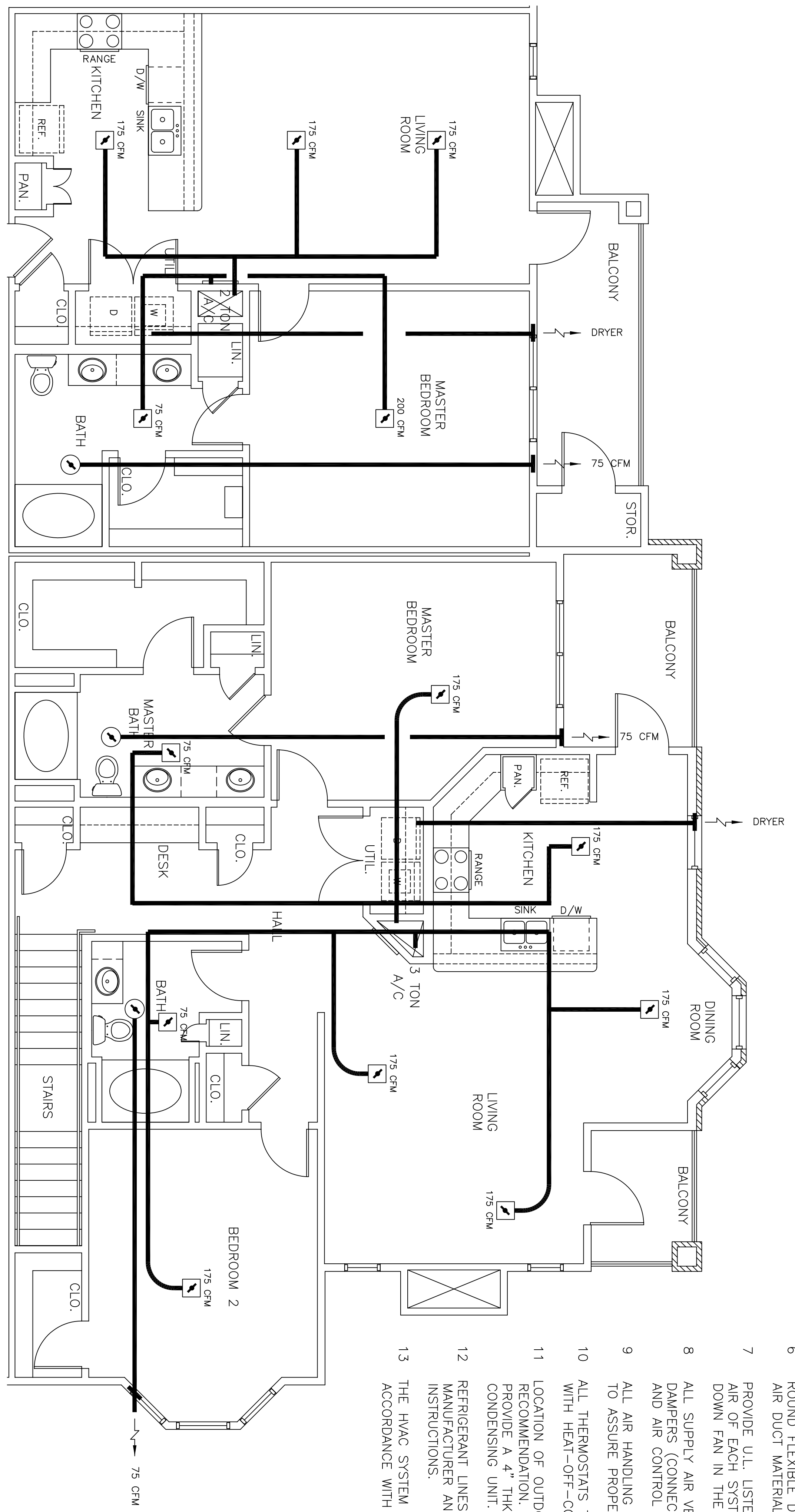


- NOTES**
- EXHAUST FAN EQUAL TO BROAN, MODEL NO. L1100 100 CFM OR EQUAL. FAN SHALL BE CONTROLLED BY SWITCH ON WALL AT LIGHT SWITCH. PROVIDE BACK DRAFT DAMPER AND FIRE DAMPER.
 - PROVIDE AND INSTALL WATER PROOF GRILLE IN OUTSIDE WALL FOR TOILET EXHAUST.
 - DRYER DISCHARGE GRILLE PER MFR.'S REQUIREMENTS. BACK DRAFT DAMPER MUST BE WEATHER AND INSECT PROOF.
 - EXHAUST DISCHARGE GRILLE PER MFG.'S REQUIREMENTS.
 - MECHANICAL CONTRACTOR SHALL SIZE ALL DUCTWORK.
 - ROUND FLEXIBLE DUCT TO BE UL-181, CLASS 1, AIR DUCT MATERIAL.
 - PROVIDE U.L. LISTED 1250°F FIRESTAT IN RETURN AIR OF EACH SYSTEM UNDER 2000 CFM TO SHUT DOWN FAN IN THE EVENT OF A FIRE.
 - ALL SUPPLY AIR VENTS SHALL BE EQUIPPED WITH FIRE DAMPERS (CONNECT TO THE BUILDING FIRE ALARM SYSTEM AND AIR CONTROL DAMPERS WHERE APPLICABLE.)
 - ALL AIR HANDLING SYSTEMS SHALL BE BALANCED TO ASSURE PROPER AIR FLOWS PER PLAN.
 - ALL THERMOSTATS TO BE AUTOMATIC CHANGEOVER WITH HEAT-OFF-COOL SWITCH
 - LOCATION OF OUTDOOR UNITS AS PER ARCHITECTS RECOMMENDATION. MECHANICAL CONTRACTOR SHALL PROVIDE A 4" THK. CONCRETE REINFORCED PAD FOR CONDENSING UNIT.
 - REFRIGERANT LINES SHALL BE SIZED BY UNIT MANUFACTURER AND INSTALLED ACCORDING TO INSTRUCTIONS.
 - THE HVAC SYSTEM SHALL BE CONSTRUCTED IN ACCORDANCE WITH NFPA 101(1997).

- LEGEND**
- SUPPLY AIR VENT
 - ↗ FIRE DAMPER
 - BATHROOM EXHAUST
 - ⊕ THERMOSTAT



UNIT 'G'

UNIT 'H'

UNITS G & H HVAC PLAN

SCALE: 1/4" = 1'-0"

MECHANICAL SPECIFICATIONS
 2 TON HEAT PUMP

EQUIPMENT SELECTIONS

INDOOR HEAT PUMP _____ ADP BU24210

AIR FLOW _____ 800 CFM

ELECTRICAL SPECIFICATIONS _____ 240V-1Ø

UNIT M.C.A. (INCLUDING HEAT) _____ 55.0 AMPS

REV. CYCLE HEAT CAPACITY _____ 34120 BTUH

AUX. HEAT CAPACITY _____ 10.0 KW

OUTDOOR HEAT PUMP _____ DUCANE HP10824

ELECTRICAL SPECIFICATIONS _____ 240V-1Ø

UNIT M.C.A. _____ 16.3 AMPS

COOLING CAPACITY _____ 24,000 BTUH S.E.E.R. 13.0

MECHANICAL SPECIFICATIONS
 3 TON HEAT PUMP

EQUIPMENT SELECTIONS

INDOOR HEAT PUMP _____ ADP BU3610

AIR FLOW _____ 1200 CFM

ELECTRICAL SPECIFICATIONS _____ 240V-1Ø

UNIT M.C.A. (INCLUDING HEAT) _____ 60.0 AMPS

REV. CYCLE HEAT CAPACITY _____ 34120 BTUH

AUX. HEAT CAPACITY _____ 10.0 KW (41.6A)

OUTDOOR HEAT PUMP _____ DUCANE HP10836

ELECTRICAL SPECIFICATIONS _____ 240V-1Ø

UNIT M.C.A. _____ 23.9 MCA

COOLING CAPACITY _____ 34,400 BTUH S.E.E.R. 13.0