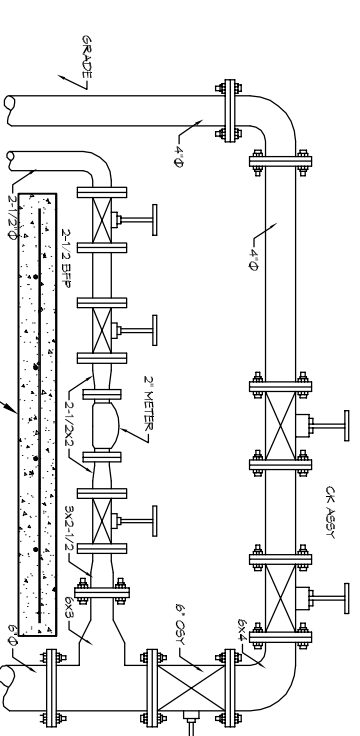


GENERAL NOTES

1. ALL CONSTRUCTION SHALL COMPLY WITH CONTRACT SPECIFICATIONS AND APPLICABLE LOCAL, STATE AND FEDERAL STANDARDS AND REGULATIONS.
2. CONSTRUCTION SHALL NOT INTERRUPT EXISTING UTILITIES.
3. ALL DISTURBED GROUND SHALL BE RESTORED IN KIND TO A CONDITION EQUAL TO OR BETTER THAN ORIGINALLY FOUND.
4. SOIL EROSION CONTROL SHALL BE IN ACCORDANCE WITH THESE DOCUMENTS.
5. PROTECT EXISTING UTILITY LINES FROM DAMAGE. FOLLOW INDIVIDUAL UTILITY'S RECOMMENDATIONS FOR UTILITY LINE PROTECTION.
6. CONTRACTOR SHALL IMMEDIATELY REPORT ALL DAMAGE TO UTILITY LINES TO BOTH UTILITY COMPANY AND ENGINEER.
7. ALL DAMAGE CAUSED BY EXISTING UTILITY LINES BY CONTRACTOR'S OPERATION SHALL BE REPAIRED BY THE CONTRACTOR TO COMPLETE SATISFACTION OF THE UTILITY COMPANY AND ENGINEER.
8. LOCATION OF EXISTING UTILITIES IS APPROXIMATE. CONTRACTOR SHALL FIELD VERIFY EXACT LOCATIONS.
9. CONTRACTOR IS RESPONSIBLE FOR CUT AND CAP OF EXISTING UTILITIES PRIOR TO ANY DEMOLITION.
10. CONTRACTOR SHALL CONTACT LOUISIANA ONE CALL PRIOR TO COMMENCEMENT OF SITE EXCAVATION.

SITE UTILITIES LEGEND



2" FIRE & DOMESTIC WATER ASSEMBLY
SCALE: N=1/8"

DAMMON ENGINEERING, INC.

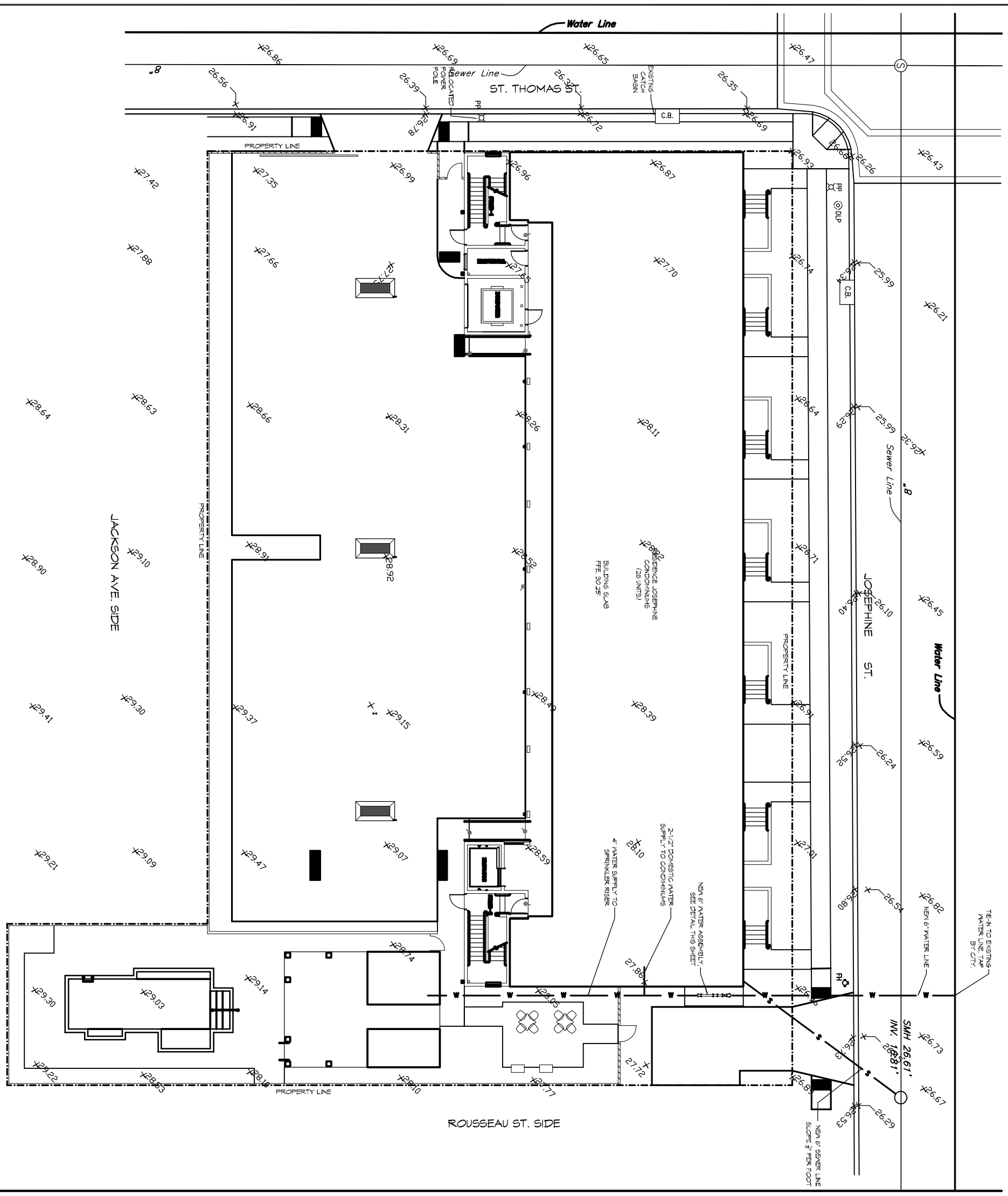
RESIDENCE JOSEPHINE CONDOMINIUMS
 2100 St. Thomas St.
 New Orleans, Louisiana 70130

DATE: 30 Dec. 2015
SCALE: AS SHOWN
FILE NAME: SITE UTILITIES PLAN

STEVEN J. FINEGAN ARCHITECTS, LTD.
 A PROFESSIONAL CORPORATION
 123 S. Pierce St. - New Orleans, LA 70119
 (504)486-5744 www.stevenjfineganarchitect.com
 E-mail: stevenjfinegan@coxnet.com

NO.	DATE	REVISIONS

C1.3



1 SITE UTILITIES PLAN



SCALE: N=1/8"