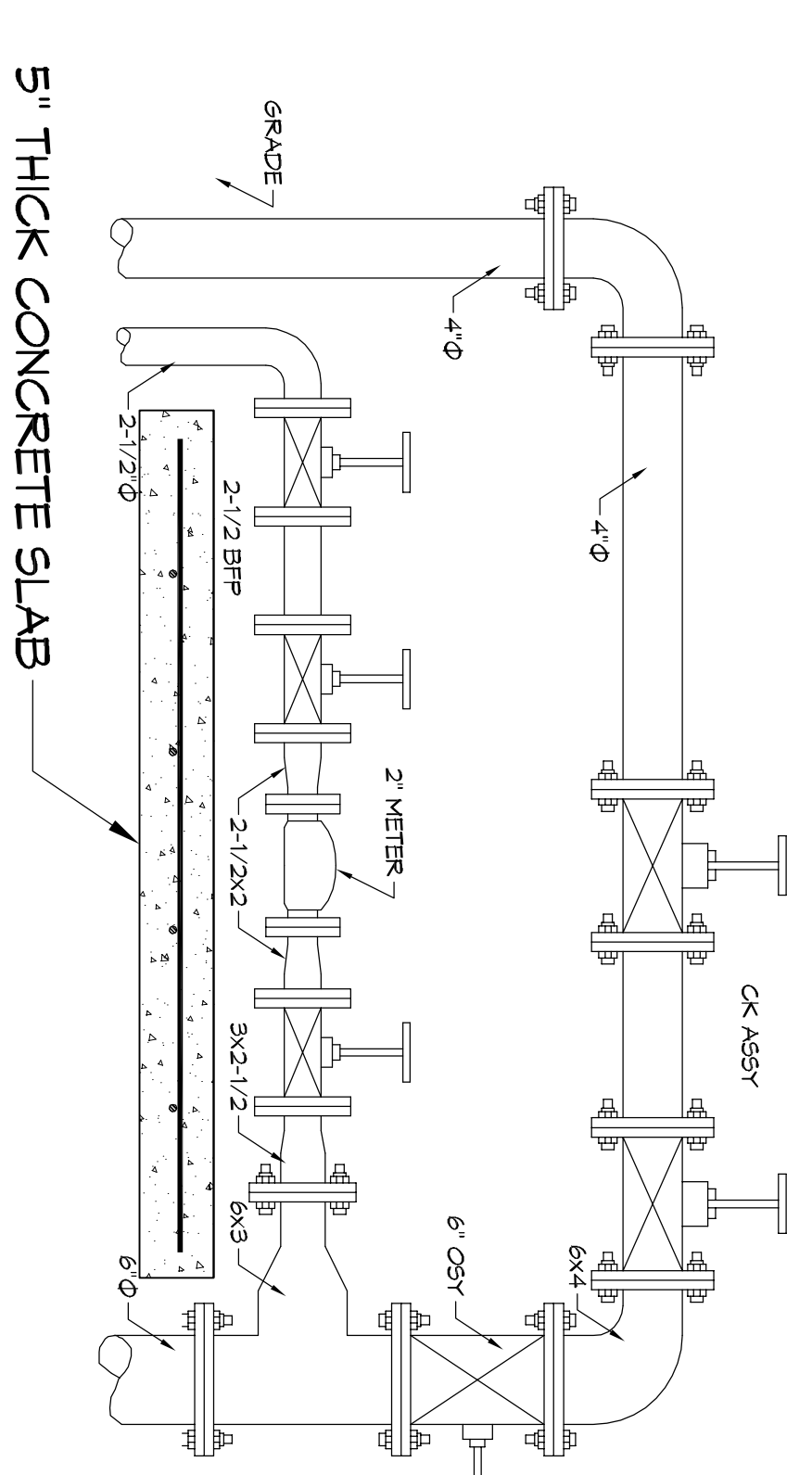
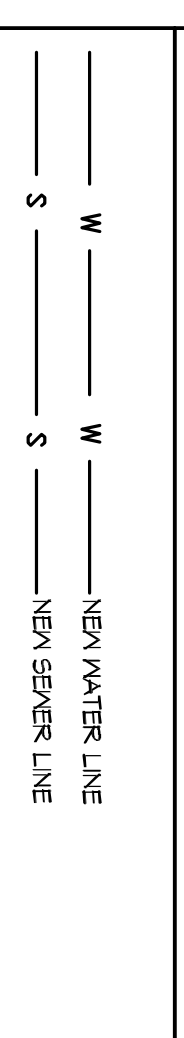


GENERAL NOTES

1. ALL CONSTRUCTION SHALL COMPLY WITH CONTRACT SPECIFICATIONS AND APPLICABLE LOCAL, STATE, AND FEDERAL STANDARDS AND REGULATIONS.
2. CONSTRUCTION SHALL NOT INTERRUPT EXISTING UTILITIES.
3. ALL DISTURBED GROUND SHALL BE RESTORED IN KIND TO A CONDITION EQUAL TO OR BETTER THAN ORIGINALLY FOUND.
4. SOIL EROSION CONTROL SHALL BE IN ACCORDANCE WITH THESE DOCUMENTS.
5. PROTECT EXISTING UTILITY LINES FROM DAMAGE. FOLLOW INDIVIDUAL UTILITIES RECOMMENDATIONS FOR UTILITY LINE PROTECTION.
6. CONTRACTOR SHALL IMMEDIATELY REPORT ALL DAMAGE TO UTILITY LINES TO BOTH UTILITY COMPANY AND ENGINEER.
7. ALL DAMAGE CAUSED TO EXISTING UTILITY LINES BY CONTRACTOR'S OPERATION OF EXISTING UTILITIES IS APPROXIMATE. CONTRACTOR SHALL FIELD VERIFY EXACT LOCATIONS.
8. CONTRACTOR IS RESPONSIBLE FOR CUT AND CAP OF EXISTING UTILITIES PRIOR TO ANY DEMOLITION.
9. CONTRACTOR SHALL CONTACT LOUISIANA ONE CALL PRIOR TO COMMENCEMENT OF SITE EXCAVATION.

SITE UTILITIES LEGEND



2 1/2" DOMESTIC WATER ASSEMBLY

SCALE: NTS

DAMMON ENGINEERING, INC.

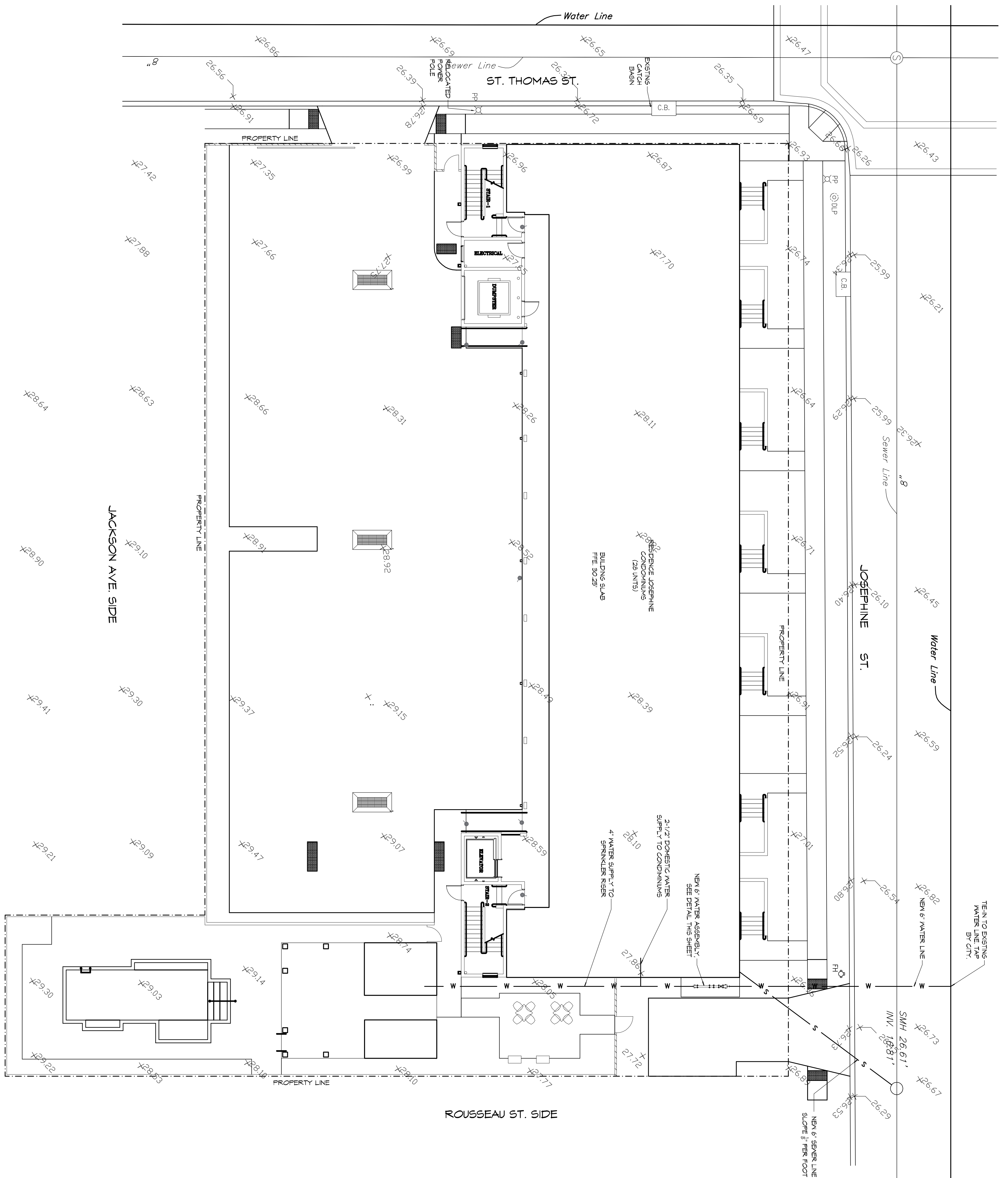
RESIDENCE JOSEPHINE CONDOMINIUMS
2100 St. Thomas St.
New Orleans, Louisiana 70130

STEVEN J. PINNEGAN ARCHITECTS, LTD.
A PROFESSIONAL CORPORATION
123 S. Pierre St. - New Orleans, LA 70119
(504) 488-5744 www.stevejpinneganarchitect.com
E-mail: stevejpinnegan@hco.com

| NO. | DATE | REVISIONS |
|-----|------|-----------|
| | | |
| | | |

C1.3

This drawing is the property of STEVEN J. PINNEGAN ARCHITECTS, LTD. It is not to be reproduced, copied, or altered in any way without the written consent of STEVEN J. PINNEGAN ARCHITECTS, LTD. and is to be returned on request.



SITE UTILITIES PLAN

SCALE: 1/8"=1'-0"

