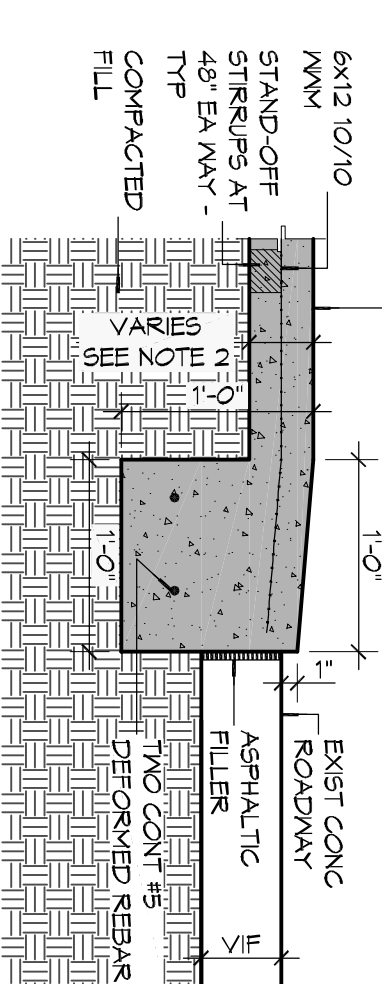


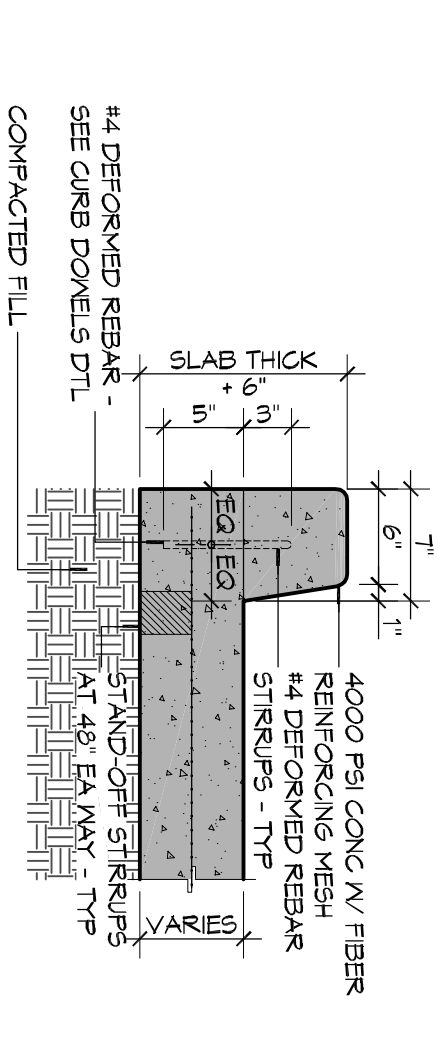
TYPICAL PAVEMENT EDGE
SCALE: 1"=1'-0"



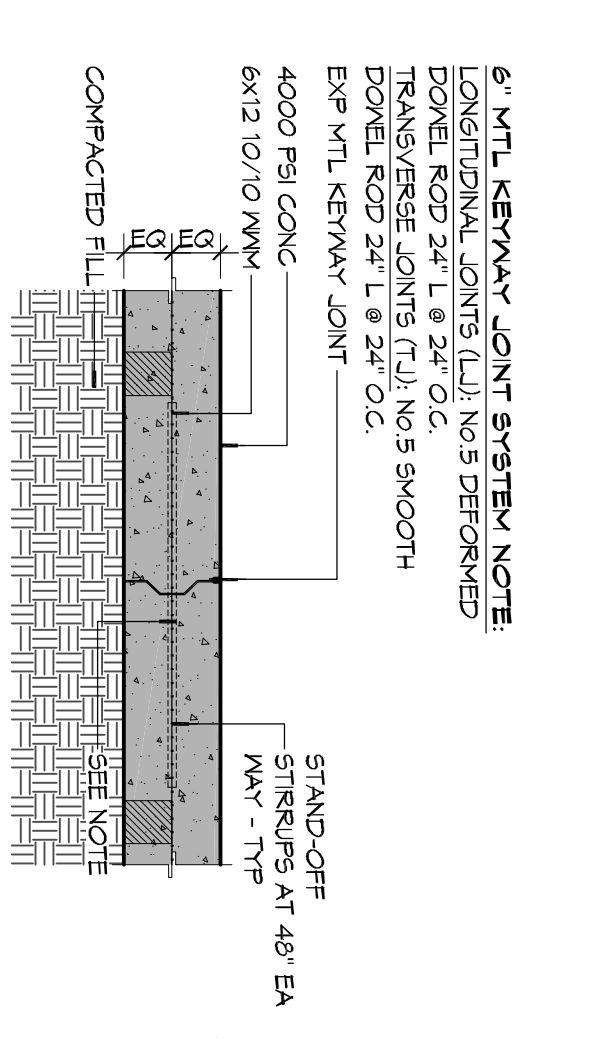
DRIVEWAY ROLLOVER CURB
SCALE: 1"=1'-0"

GENERAL PAVING NOTES

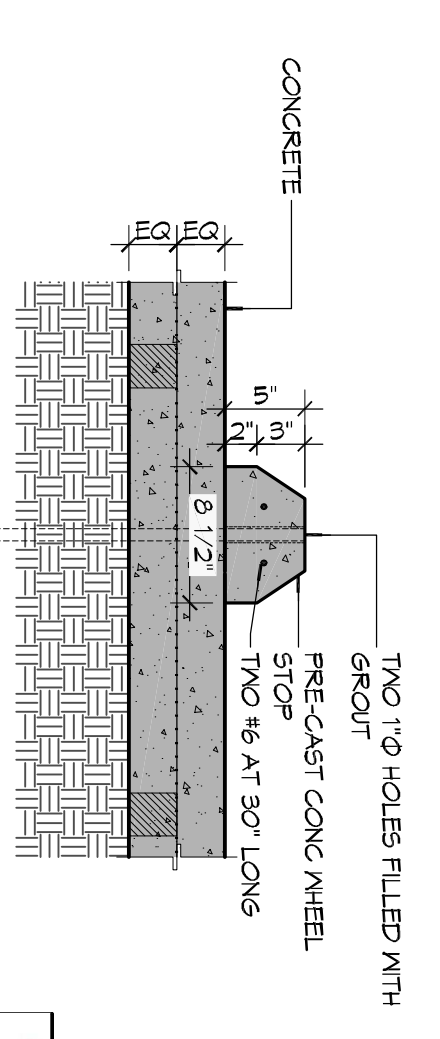
1. ALL NEW CONCRETE SHALL HAVE A MINIMUM COMPRESSIVE STRENGTH OF 4,000 PSI AT 28 DAYS AND A MINIMUM THICKNESS OF 6" (MIN. C-150 TYPE) BE IN ACCORDANCE WITH THE LATEST REVISION OF MSHA 2-150 TYPE.
2. CONCRETE PAVING THICKNESS SHALL VARY AS FOLLOWS:
 - a. AREAS 1' LOADING AREAS = 8" THICKNESS (INDICATED WITH CROSS HATCH WHERE OCCURS)
 - b. DRIVE LANE'S & PARKING AREAS = 6" THICKNESS (STANDARD LIND)
3. ALL REINFORCING STEEL SHALL MEET ASTM-A615 (GRADE 60).
4. ALL REINFORCING STEEL SHALL BE SECURELY SUPPORTED TO PREVENT BOTH VERTICAL AND HORIZONTAL MOVEMENT DURING CONCRETE PLACEMENT. ALL CONTROL AND EXPANSION JOINTS SHALL BE LOCATED AND INSTALLED AS SHOWN ON THE PAVING PLAN AND IN ACCORDANCE WITH THE MANUFACTURER'S RECOMMENDATIONS.
5. ALL SUB GRADE FILL SHALL BE SELECT GRANULAR MATERIAL.
6. ALL 500 GRADE FILL SHALL BE SELECT GRANULAR MATERIAL.
7. CONTRACTOR SHALL CONTACT THE REGULATORY DEPARTMENT OF ENGINEERING PRIOR TO CONDUCTING ANY WORK.
8. ANY WORK WITHIN THE ROADWAY OR ADJACENT TO THE ROADWAY CAUSING AN INTERFERENCE TO VEHICULAR TRAFFIC MUST CONFORM TO THE REGULATIONS SET FORTH BY THE UNIFORM MANUAL OF TRAFFIC CONTROL DEVICES OF THE STATE OF LOUISIANA. THE CONTRACTOR MUST FURNISH ALL NECESSARY TRAFFIC SIGNS AND/OR BARRICADES AND MAINTAIN THEM DURING CONSTRUCTION ACTIVITY.



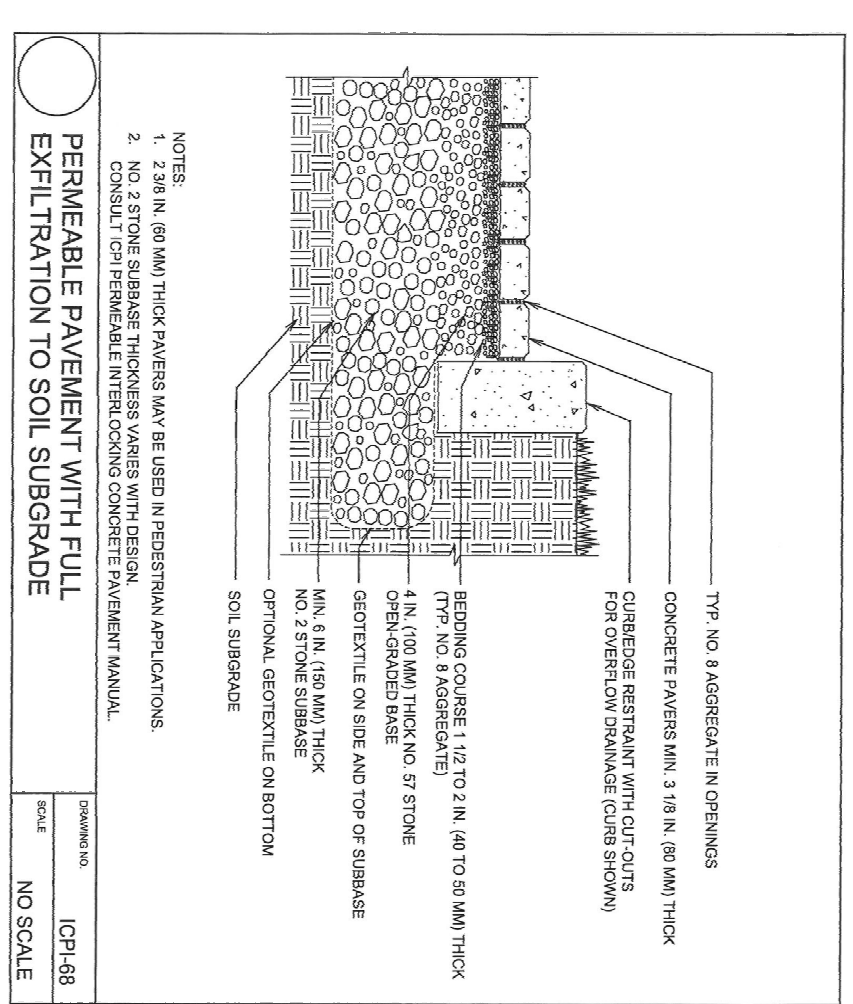
TYPICAL CURB
SCALE: 1"=1'-0"



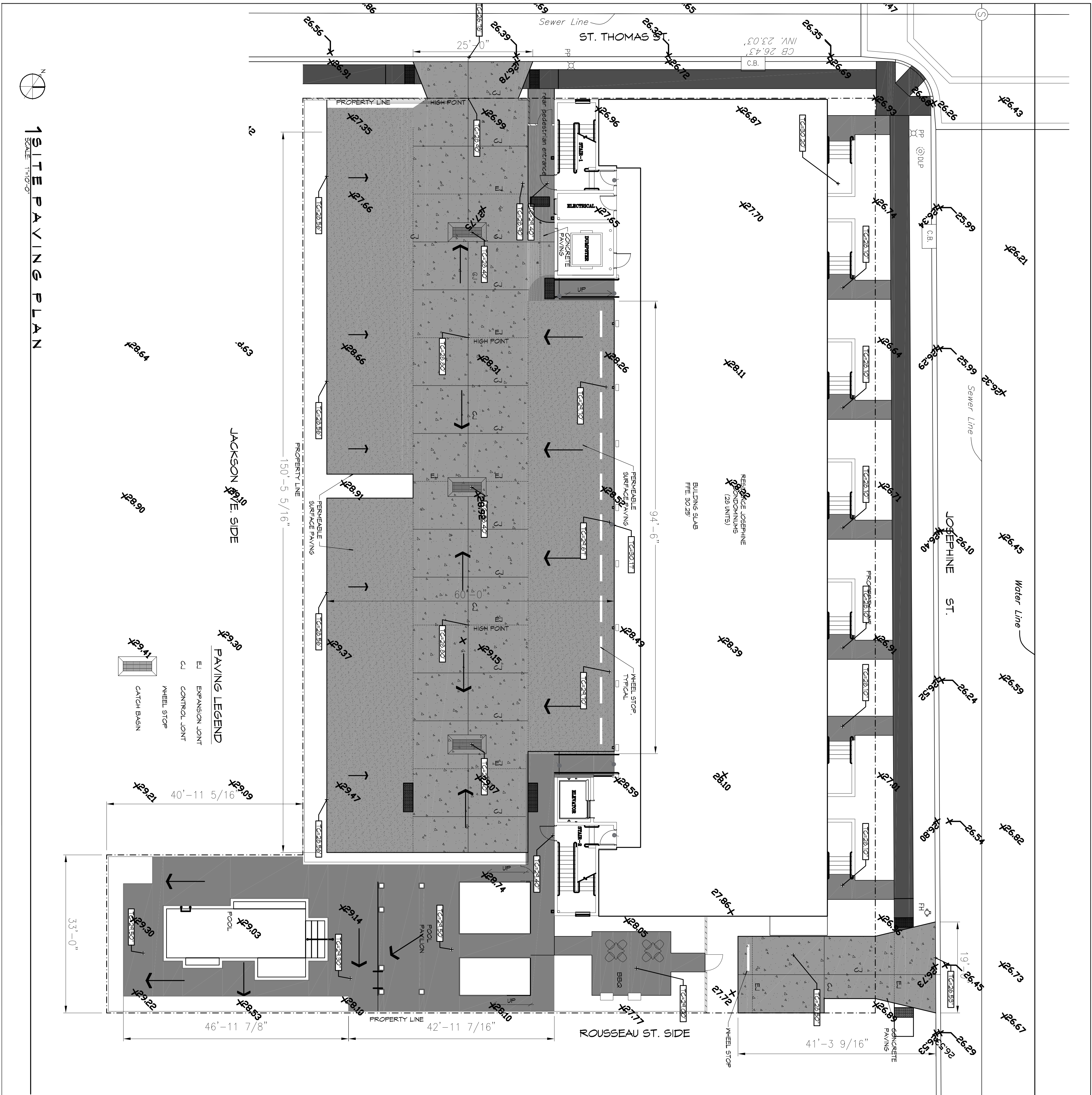
STEP PAVEMENT JOINT
SCALE: 1"=1'-0"



WHEEL STOP
SCALE: 1"=1'-0"



PERMEABLE PAVEMENT WITH FILL



1 SITE PAVING PLAN
SCALE: 1"=1'-0"

DAMMON ENGINEERING, INC.
1011 S. J. A. & W. S. S. S. J. P. J.
5141 Lakeside, Suite 100, Metairie, LA 70002
Phone: 504-885-1555

RESIDENCE JOSEPHINE CONDOMINIUMS
2100 St. Thomas St.
New Orleans, Louisiana 70130

SCALE: AS SHOWN FILE NAME: SITE PAVING PLAN
DATE: 01-11-16

STEVEN J. FINEGAN ARCHITECTS, LTD.
A PROFESSIONAL CORPORATION
123 S. Pierce St. - New Orleans, LA 70119
(504)486-5744 www.stevehineganarchitect.com
E-mail: stevehinegan@coxmail.com

NO. DATE REVISIONS

C1.1

This drawing is the property of STEVEN J. FINEGAN ARCHITECTS, LTD. It is not to be reproduced, copied, or otherwise used in whole or in part, and is to be returned to the originator upon completion of the project. Any unauthorized use of this drawing without the approval of STEVEN J. FINEGAN ARCHITECTS, LTD. shall be held to be a violation of the copyright laws of the State of Louisiana.

