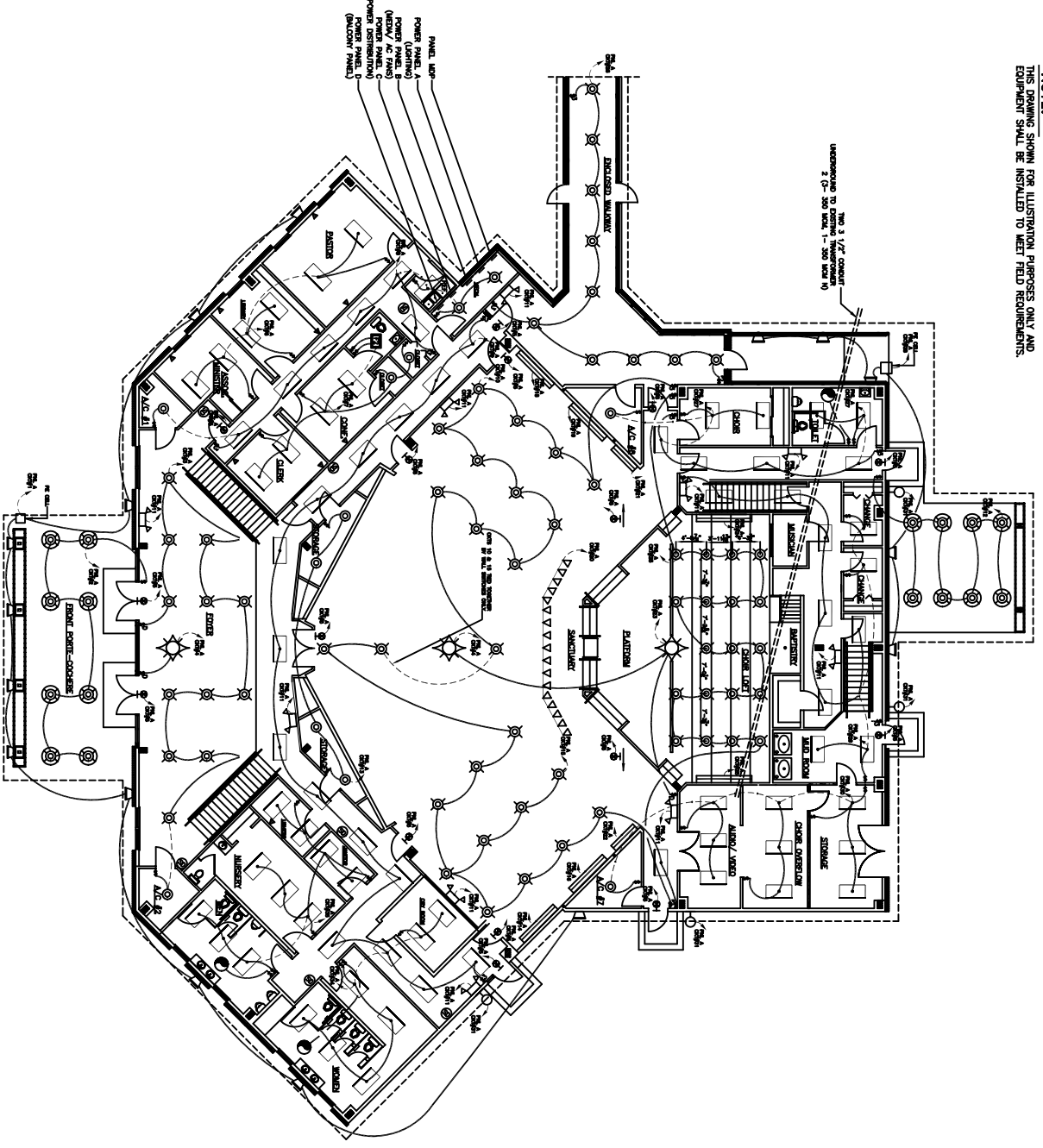


NO.	DESCRIPTION	QTY	UNIT	DATE	BY	REVISIONS
1	RECESSED CAN LIGHT	1	EA			
2	RECESSED CAN LIGHT	1	EA			
3	RECESSED CAN LIGHT	1	EA			
4	RECESSED CAN LIGHT	1	EA			
5	RECESSED CAN LIGHT	1	EA			
6	RECESSED CAN LIGHT	1	EA			
7	RECESSED CAN LIGHT	1	EA			
8	RECESSED CAN LIGHT	1	EA			
9	RECESSED CAN LIGHT	1	EA			
10	RECESSED CAN LIGHT	1	EA			
11	RECESSED CAN LIGHT	1	EA			
12	RECESSED CAN LIGHT	1	EA			
13	RECESSED CAN LIGHT	1	EA			
14	RECESSED CAN LIGHT	1	EA			
15	RECESSED CAN LIGHT	1	EA			
16	RECESSED CAN LIGHT	1	EA			
17	RECESSED CAN LIGHT	1	EA			
18	RECESSED CAN LIGHT	1	EA			
19	RECESSED CAN LIGHT	1	EA			
20	RECESSED CAN LIGHT	1	EA			
21	RECESSED CAN LIGHT	1	EA			
22	RECESSED CAN LIGHT	1	EA			
23	RECESSED CAN LIGHT	1	EA			
24	RECESSED CAN LIGHT	1	EA			
25	RECESSED CAN LIGHT	1	EA			
26	RECESSED CAN LIGHT	1	EA			
27	RECESSED CAN LIGHT	1	EA			
28	RECESSED CAN LIGHT	1	EA			
29	RECESSED CAN LIGHT	1	EA			
30	RECESSED CAN LIGHT	1	EA			
31	RECESSED CAN LIGHT	1	EA			
32	RECESSED CAN LIGHT	1	EA			
33	RECESSED CAN LIGHT	1	EA			
34	RECESSED CAN LIGHT	1	EA			
35	RECESSED CAN LIGHT	1	EA			
36	RECESSED CAN LIGHT	1	EA			
37	RECESSED CAN LIGHT	1	EA			
38	RECESSED CAN LIGHT	1	EA			
39	RECESSED CAN LIGHT	1	EA			
40	RECESSED CAN LIGHT	1	EA			
41	RECESSED CAN LIGHT	1	EA			
42	RECESSED CAN LIGHT	1	EA			
43	RECESSED CAN LIGHT	1	EA			
44	RECESSED CAN LIGHT	1	EA			
45	RECESSED CAN LIGHT	1	EA			
46	RECESSED CAN LIGHT	1	EA			
47	RECESSED CAN LIGHT	1	EA			
48	RECESSED CAN LIGHT	1	EA			
49	RECESSED CAN LIGHT	1	EA			
50	RECESSED CAN LIGHT	1	EA			
51	RECESSED CAN LIGHT	1	EA			
52	RECESSED CAN LIGHT	1	EA			
53	RECESSED CAN LIGHT	1	EA			
54	RECESSED CAN LIGHT	1	EA			
55	RECESSED CAN LIGHT	1	EA			
56	RECESSED CAN LIGHT	1	EA			
57	RECESSED CAN LIGHT	1	EA			
58	RECESSED CAN LIGHT	1	EA			
59	RECESSED CAN LIGHT	1	EA			
60	RECESSED CAN LIGHT	1	EA			
61	RECESSED CAN LIGHT	1	EA			
62	RECESSED CAN LIGHT	1	EA			
63	RECESSED CAN LIGHT	1	EA			
64	RECESSED CAN LIGHT	1	EA			
65	RECESSED CAN LIGHT	1	EA			
66	RECESSED CAN LIGHT	1	EA			
67	RECESSED CAN LIGHT	1	EA			
68	RECESSED CAN LIGHT	1	EA			
69	RECESSED CAN LIGHT	1	EA			
70	RECESSED CAN LIGHT	1	EA			
71	RECESSED CAN LIGHT	1	EA			
72	RECESSED CAN LIGHT	1	EA			
73	RECESSED CAN LIGHT	1	EA			
74	RECESSED CAN LIGHT	1	EA			
75	RECESSED CAN LIGHT	1	EA			
76	RECESSED CAN LIGHT	1	EA			
77	RECESSED CAN LIGHT	1	EA			
78	RECESSED CAN LIGHT	1	EA			
79	RECESSED CAN LIGHT	1	EA			
80	RECESSED CAN LIGHT	1	EA			
81	RECESSED CAN LIGHT	1	EA			
82	RECESSED CAN LIGHT	1	EA			
83	RECESSED CAN LIGHT	1	EA			
84	RECESSED CAN LIGHT	1	EA			
85	RECESSED CAN LIGHT	1	EA			
86	RECESSED CAN LIGHT	1	EA			
87	RECESSED CAN LIGHT	1	EA			
88	RECESSED CAN LIGHT	1	EA			
89	RECESSED CAN LIGHT	1	EA			
90	RECESSED CAN LIGHT	1	EA			
91	RECESSED CAN LIGHT	1	EA			
92	RECESSED CAN LIGHT	1	EA			
93	RECESSED CAN LIGHT	1	EA			
94	RECESSED CAN LIGHT	1	EA			
95	RECESSED CAN LIGHT	1	EA			
96	RECESSED CAN LIGHT	1	EA			
97	RECESSED CAN LIGHT	1	EA			
98	RECESSED CAN LIGHT	1	EA			
99	RECESSED CAN LIGHT	1	EA			
100	RECESSED CAN LIGHT	1	EA			

NO.	DESCRIPTION	QTY	UNIT	DATE	BY	REVISIONS
1	RECESSED CAN LIGHT	1	EA			
2	RECESSED CAN LIGHT	1	EA			
3	RECESSED CAN LIGHT	1	EA			
4	RECESSED CAN LIGHT	1	EA			
5	RECESSED CAN LIGHT	1	EA			
6	RECESSED CAN LIGHT	1	EA			
7	RECESSED CAN LIGHT	1	EA			
8	RECESSED CAN LIGHT	1	EA			
9	RECESSED CAN LIGHT	1	EA			
10	RECESSED CAN LIGHT	1	EA			
11	RECESSED CAN LIGHT	1	EA			
12	RECESSED CAN LIGHT	1	EA			
13	RECESSED CAN LIGHT	1	EA			
14	RECESSED CAN LIGHT	1	EA			
15	RECESSED CAN LIGHT	1	EA			
16	RECESSED CAN LIGHT	1	EA			
17	RECESSED CAN LIGHT	1	EA			
18	RECESSED CAN LIGHT	1	EA			
19	RECESSED CAN LIGHT	1	EA			
20	RECESSED CAN LIGHT	1	EA			
21	RECESSED CAN LIGHT	1	EA			
22	RECESSED CAN LIGHT	1	EA			
23	RECESSED CAN LIGHT	1	EA			
24	RECESSED CAN LIGHT	1	EA			
25	RECESSED CAN LIGHT	1	EA			
26	RECESSED CAN LIGHT	1	EA			
27	RECESSED CAN LIGHT	1	EA			
28	RECESSED CAN LIGHT	1	EA			
29	RECESSED CAN LIGHT	1	EA			
30	RECESSED CAN LIGHT	1	EA			
31	RECESSED CAN LIGHT	1	EA			
32	RECESSED CAN LIGHT	1	EA			
33	RECESSED CAN LIGHT	1	EA			
34	RECESSED CAN LIGHT	1	EA			
35	RECESSED CAN LIGHT	1	EA			
36	RECESSED CAN LIGHT	1	EA			
37	RECESSED CAN LIGHT	1	EA			
38	RECESSED CAN LIGHT	1	EA			
39	RECESSED CAN LIGHT	1	EA			
40	RECESSED CAN LIGHT	1	EA			
41	RECESSED CAN LIGHT	1	EA			
42	RECESSED CAN LIGHT	1	EA			
43	RECESSED CAN LIGHT	1	EA			
44	RECESSED CAN LIGHT	1	EA			
45	RECESSED CAN LIGHT	1	EA			
46	RECESSED CAN LIGHT	1	EA			
47	RECESSED CAN LIGHT	1	EA			
48	RECESSED CAN LIGHT	1	EA			
49	RECESSED CAN LIGHT	1	EA			
50	RECESSED CAN LIGHT	1	EA			
51	RECESSED CAN LIGHT	1	EA			
52	RECESSED CAN LIGHT	1	EA			
53	RECESSED CAN LIGHT	1	EA			
54	RECESSED CAN LIGHT	1	EA			
55	RECESSED CAN LIGHT	1	EA			
56	RECESSED CAN LIGHT	1	EA			
57	RECESSED CAN LIGHT	1	EA			
58	RECESSED CAN LIGHT	1	EA			
59	RECESSED CAN LIGHT	1	EA			
60	RECESSED CAN LIGHT	1	EA			
61	RECESSED CAN LIGHT	1	EA			
62	RECESSED CAN LIGHT	1	EA			
63	RECESSED CAN LIGHT	1	EA			
64	RECESSED CAN LIGHT	1	EA			
65	RECESSED CAN LIGHT	1	EA			
66	RECESSED CAN LIGHT	1	EA			
67	RECESSED CAN LIGHT	1	EA			
68	RECESSED CAN LIGHT	1	EA			
69	RECESSED CAN LIGHT	1	EA			
70	RECESSED CAN LIGHT	1	EA			
71	RECESSED CAN LIGHT	1	EA			
72	RECESSED CAN LIGHT	1	EA			
73	RECESSED CAN LIGHT	1	EA			
74	RECESSED CAN LIGHT	1	EA			
75	RECESSED CAN LIGHT	1	EA			
76	RECESSED CAN LIGHT	1	EA			
77	RECESSED CAN LIGHT	1	EA			
78	RECESSED CAN LIGHT	1	EA			
79	RECESSED CAN LIGHT	1	EA			
80	RECESSED CAN LIGHT	1	EA			
81	RECESSED CAN LIGHT	1	EA			
82	RECESSED CAN LIGHT	1	EA			
83	RECESSED CAN LIGHT	1	EA			
84	RECESSED CAN LIGHT	1	EA			
85	RECESSED CAN LIGHT	1	EA			
86	RECESSED CAN LIGHT	1	EA			
87	RECESSED CAN LIGHT	1	EA			
88	RECESSED CAN LIGHT	1	EA			
89	RECESSED CAN LIGHT	1	EA			
90	RECESSED CAN LIGHT	1	EA			
91	RECESSED CAN LIGHT	1	EA			
92	RECESSED CAN LIGHT	1	EA			
93	RECESSED CAN LIGHT	1	EA			
94	RECESSED CAN LIGHT	1	EA			
95	RECESSED CAN LIGHT	1	EA			
96	RECESSED CAN LIGHT	1	EA			
97	RECESSED CAN LIGHT	1	EA			
98	RECESSED CAN LIGHT	1	EA			
99	RECESSED CAN LIGHT	1	EA			
100	RECESSED CAN LIGHT	1	EA			

NOTE: THIS DRAWING SHOWN FOR ILLUSTRATION PURPOSES ONLY AND EQUIPMENT SHALL BE INSTALLED TO MEET FIELD REQUIREMENTS.

- LEGEND**
- - EXTERIOR PORCH LIGHT W/ 90 MIN. BACKUP
 - - LIGHT (75W)
 - - RECESSED CAN LIGHT
 - - RECESSED CAN LIGHT W/ 90 MIN BACKUP
 - - CHANDELER
 - - COVE LIGHTING
 - - STAGE LIGHTING
 - - EXTERIOR LIGHTS W/ 90 MIN BACKUP
 - - VENT/LIGHT
 - - EXIT LIGHT, 90 MIN. BATTERY BACK-UP
 - - 2x4 FLUORESCENT FIXTURE
 - - 4/740/C.W.
 - - EMERGENCY LIGHT, 90 MIN. BATTERY BACK-UP
 - - SMOKE DETECTOR
 - - TELEPHONE/COMPUTER
 - - POWER PANEL
 - - SWITCH
 - - THREE-WAY SWITCH
 - - DIMMER SWITCH
 - - HOT WATER HEATER WITH SAFETY SW.
 - - VENT



LIGHTING PLAN
SCALE: 1/8"=1'-0"

REVISED: 08-18-05

SHEET E-1	SCALE: AS NOTED FILE: JOB NO. 1495g DATE: 05-16-05	NEW SANCTUARY DAMMON ENGINEERING, INC. 1095 FLORIDA AVENUE 985-649-5832 SLIDELL, LA. 70456 DAMMONENGINEERING.COM	LIGHTING PLAN STARLIGHT BAPTIST CHURCH 2100 SECOND STREET SLIDELL, LOUISIANA
--------------	---	--	---