

2nd FLOOR PLUMBING PLAN
SCALE: 3/16" = 1'-0"

PLUMBING FIXTURE SCHEDULE			
MARK	DESCRIPTION	TYPE	ROUGH-IN SIZES
W.C.	W.C. WATER CLOSET	W.C.	12" x 12" x 12"
W.C.	W.C. WATER CLOSET	W.C.	12" x 12" x 12"
W.C.	W.C. WATER CLOSET	W.C.	12" x 12" x 12"
F.D.	FLOOR DRAIN	F.D.	12" x 12" x 12"
F.D.	FLOOR DRAIN	F.D.	12" x 12" x 12"
W.B.	WATER HEATER	W.B.	12" x 12" x 12"
SINK	KITCHEN SINK DRN	SINK	12" x 12" x 12"
M.C.	MIXER SINK DRN	M.C.	12" x 12" x 12"
S.D.	SHOWER DRAIN	S.D.	12" x 12" x 12"
M.S.	WASH SINK	M.S.	12" x 12" x 12"

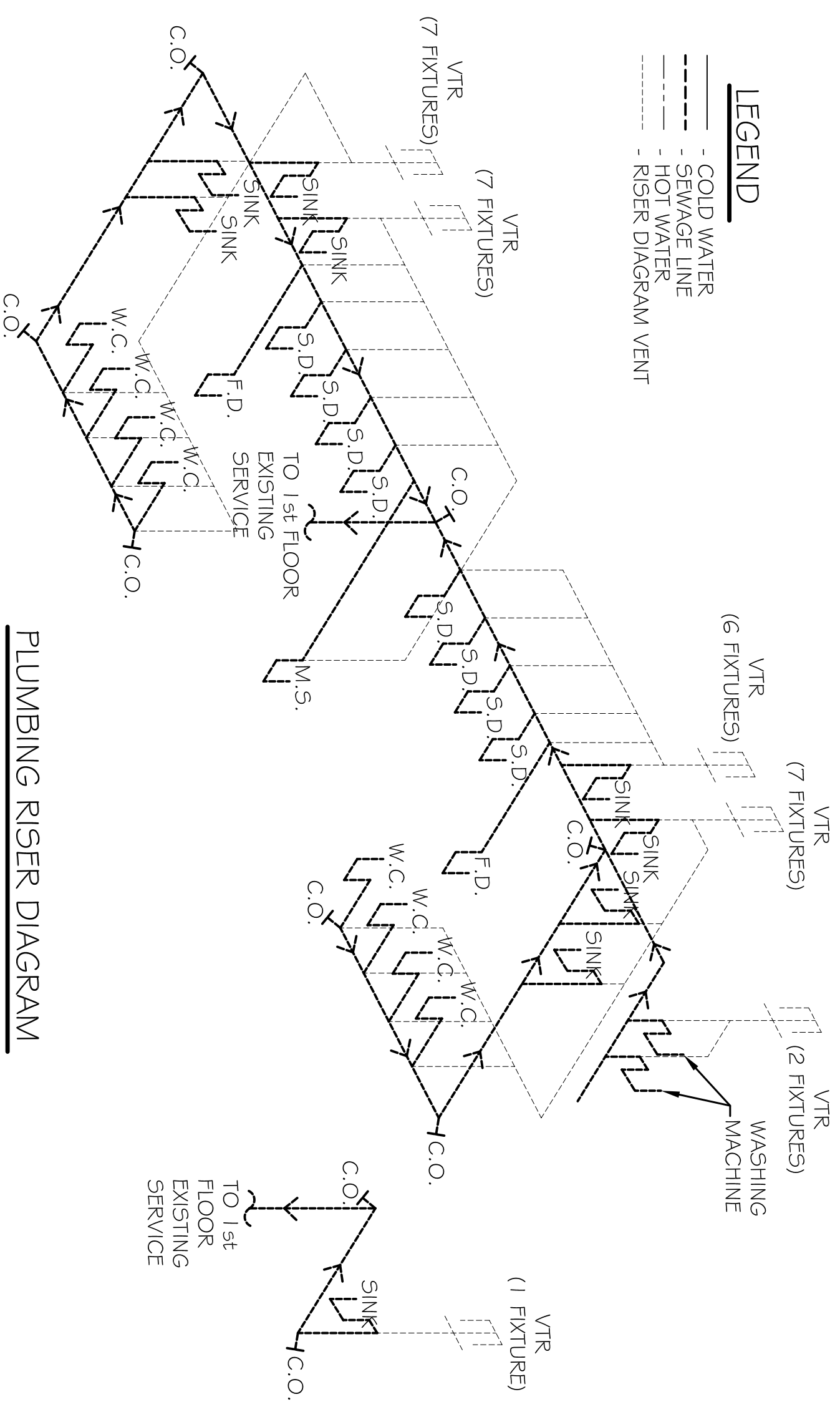
- NOTES:
- INSULATE PIPING FOR HANDICAP FIXTURE.
 - PROVIDE CHAIR CARRIER FOR WALL HUNG FIXTURE.
 - H.C. - HANDICAP FIXTURE.
 - INSTALL CONTINUOUS DRIP ON ALL FLOOR DRAINS.

PLUMBING NOTES:

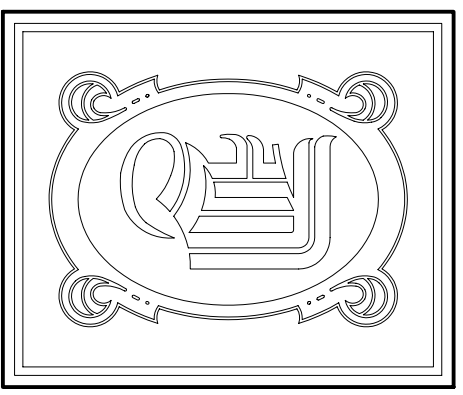
- PROVIDE ALL LABOR, MATERIAL AND EQUIPMENT FOR A COMPLETE OPERATING SYSTEM. THE SYSTEM SHALL INCLUDE HOT AND COLD WATER PIPING, SEWER AND VENT PIPING, INSULATION, WATER HEATER, HANGERS, VALVES, AND ALL SUPPORTS WITHOUT ANY RESTRICTIONS TO VOLUME, CUT AND PATCH AS REQUIRED TO INSTALL PIPES.
- ALL WORK AND MATERIAL TO COMPLY STRICTLY TO THE LATEST LOCAL, CITY, FEDERAL, STATE, AND NATIONAL GOVERNING CODES.
- CONTRACTOR IS TO FIELD VERIFY ALL EXISTING UTILITY LOCATIONS, ELEVATIONS, AND SIZES PRIOR TO COMMENCING ANY WORK. CONTRACTOR SHALL PAY NECESSARY FEES FOR THE UTILITIES CONNECTIONS.
- CONTRACTOR TO BE RESPONSIBLE TO VERIFY ANY EXISTING INVERTS AND SET NEW INVERTS OF SEWAGE AND DRAINAGE PIPES.
- SEWAGE LINES 3" AND SMALLER SHALL BE SLOPED 1/8" PER FOOT AND LINES 4" AND LARGER SHALL BE 1/4" PER FOOT.
- TEST ALL PIPING AT REQUIRED PRESSURE.
- ALL PLUMBING SHALL BE CLOSELY COORDINATED WITH STRUCTURAL, MECHANICAL, AND ELECTRICAL SYSTEMS TO INSURE NO TRADES WILL CONFLICT WITH EACH OTHER.
- DO NOT SCALE DRAWINGS. SEE DIMENSIONS ON ARCHITECTURAL DRAWINGS FOR EXACT LOCATIONS OF DOORS, WINDOWS, WALLS, FIXTURES, ETC.
- ALL WATER MAINS AND PIPING NOT SHOWN FOR CLARITY. ALL LOCATIONS FIELD VERIFIED.
- DOMESTIC HOT AND COLD WATER PIPING AND FITTINGS UNDER SLAB SHALL BE ASTM A886 COPPER WATER TUBE, TYPE L, 1/2" DRN WITH COPPER PRESSURE TYPE FITTINGS, ANSI B1.6.22. THE JOINTS SHALL BE SOLDERED TYPE USING ASTM B32 ALLOY GRADE 95A (95-5) SOLDER.
- SOIL, WASTE, VENT PIPING AND FITTINGS ABOVE THE SLAB SHALL BE SERVICE WEIGHT CAST IRON PIPE WITH BELL AND SPIGOT ENDS AND ONE PIECE NONFERROUS INSERT TYPE GASSET. USE PVC SCHEDULE 40 OR ABS DWV PIPES AND FITTINGS WHERE INDICATED BY CODE.
- ALL WATER PIPING AND FITTINGS ABOVE THE FINISHED FLOOR SHALL BE INSULATED WITH 1/2" THICK FIBERGLASS INSULATION & JACKET.
- ALL ELECTRICAL, MECHANICAL, AND PLUMBING PENETRATING FIRE WALLS SHALL BE FIRE CAULKED. PENETRATIONS THROUGH RATED CONSTRUCTION SHALL BE SEALED WITH A MATERIAL CAPABLE OF PREVENTING THE PASSAGE OF FLAMES AND HOT GASES WHEN TESTED IN ACCORDANCE WITH ASTM E119, 1.4.

LEGEND

- COLD WATER
- HOT WATER
- SEWAGE LINE
- RISER DIAGRAM VENT



PLUMBING RISER DIAGRAM
N.T.S.



DAMMON ENGINEERING, INC.
CHIEF ENGINEER
EMMETT DAMMON, P.E.
CHIEF ARCHITECT
ROBERT WILTSE

1 095 FLORIDA AVENUE
SLIDELL, LA, 70458
OFFICE: 985-649-5632
FAX: 985-641-5950

WEBSITE:
WWW.DAMMONENGINEERING.COM
EMAIL:
DAMMONENG@BELL.SOUTH.NET

ARCHITECTURE
ENGINEERING
STUDIES
PLANNING
INVESTIGATION
EXPERT WITNESSES

ALDERSGATE
UNITED METHODIST
ALTERATIONS
AND RENOVATIONS

DALE KIMBALL
25 I 5 CAREY STREET
SLIDELL, LA

PLUMBING
PLAN

REV: G-1-09
SCALE: AS NOTED
JOB#: 1795
DATE: 6-17-08
SHEET 8
P-1
OF 8