

**FIRE DETECTION/ALARM EQUIPMENT**

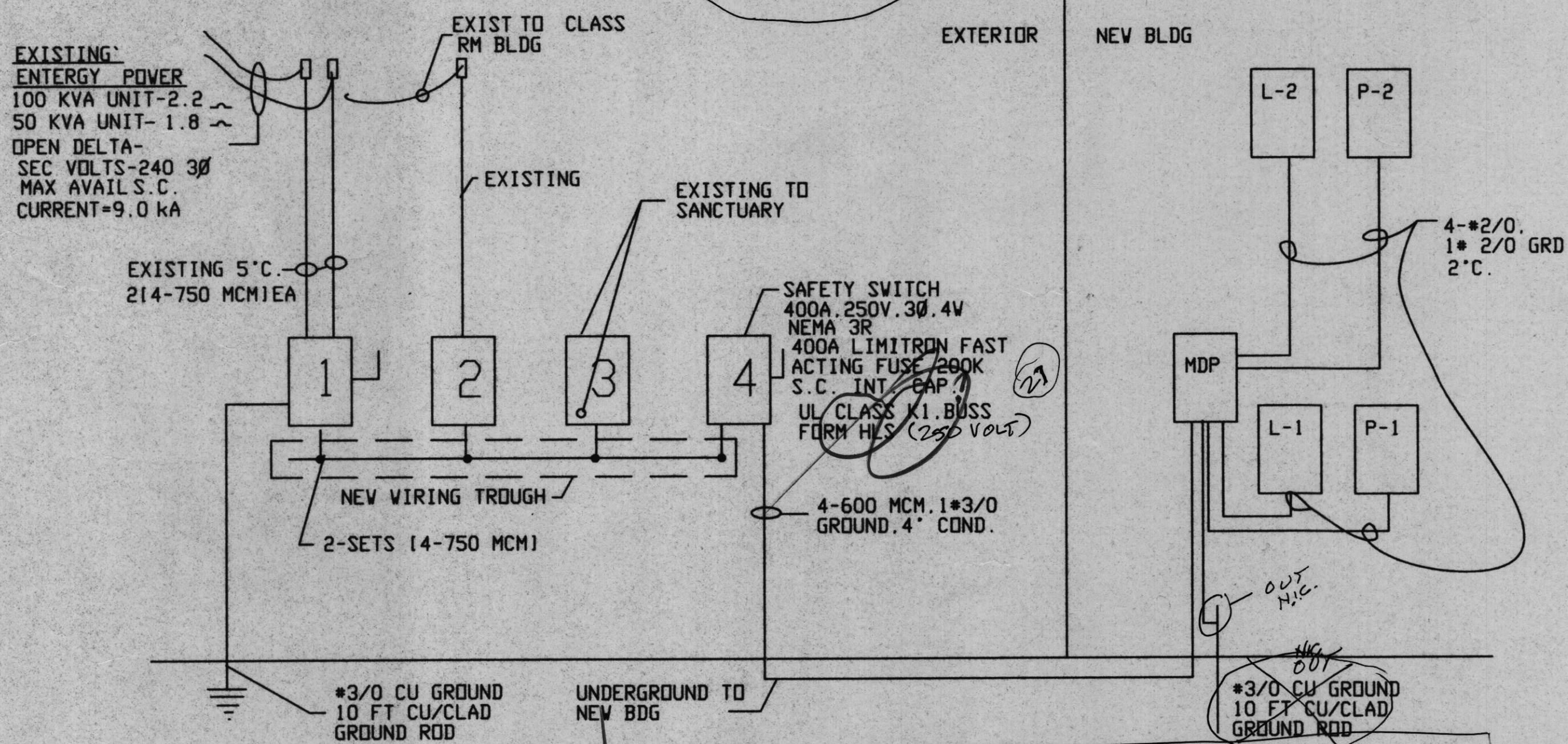
FIRE DETECTION/ALARM EQUIPMENT SHALL BE COMPATIBLE WITH THE EXISTING SYSTEM AND SHALL INCLUDE AS A MINIMUM:

- MANUAL FIRE STATIONS (ONE LOCATED AT EACH EXIT)
- FIRE ALARM STROBES (EACH HALLWAY-4 EA FLOOR & ONE IN FELLOWSHIP HALL)
- FIRE ALARM SPEAKERS (EACH HALLWAY-4 PER FLOOR)
- EA CLASS ROOM 2 PER FELLOWSHIP HALL, 5 PER FLOOR FOR HALLWAYS)

PROVIDE THE SERVICES OF A FIRE DETECTION AND ALARM COMPANY, TO DESIGN, OBTAIN FIRE MARSHAL APPROVAL, AND INSTALL FIRE DETECTION AND ALARM SYSTEM.

**GENERAL NOTES**

- ALL WORK SHALL CONFORM TO THE LATEST EDITION OF THE NATIONAL ELECTRICAL CODE, THE WASHINGTON PARISH ELECTRICAL CODE & ALL OTHER INSPECTION DEPARTMENTS HAVING JURISDICTION. OBTAIN CERTIFICATES OR APPROVAL WHERE REQUIRED.
- ALL MATERIALS FURNISHED SHALL BE NEW AND SHALL BE U.L. LISTED.
- THE DRAWINGS INDICATE SIZE AND GENERAL LOCATION OF WORK. SCALE DIMENSIONS SHALL NOT BE USED. THE EXACT LOCATION AND ELEVATION OF ALL LIGHTING FIXTURES, RECEPTACLES AND TELEPHONE OUTLETS, ETC. SHALL BE DETERMINED FROM THE ENGINEERS' DRAWINGS, UNLESS NOTED OTHERWISE.
- PRIOR TO BIDDING, CONTRACTOR SHALL VISIT THE JOB SITE AND FAMILIARIZE HIMSELF WITH THE EXISTING CONDITIONS.
- ELECTRICAL CONTRACTOR SHALL COORDINATE HIS WORK WITH OTHER TRADES AND WITH OTHER CONTRACTORS WHOSE WORK MIGHT AFFECT THIS INSTALLATION.
- ELECTRICAL CONTRACTOR SHALL COORDINATE INCLUDING ELECTRICAL SERVICE WITH UTILITY COMPANY AND INCLUDE IN HIS BID ALL CHARGES AND FEES INCURRED IN MODIFICATIONS.
- WHERE MORE THAN ONE SWITCH OCCURS IN THE SAME LOCATION, THEY SHALL BE INSTALLED IN A GANG TYPE BOX UNDER ONE COVER PLATE.
- ELECTRICAL CONTRACTOR SHALL COORDINATE THE TELEPHONE INSTALLATION WITH THE CHURCH REPRESENTATIVE.
- BOND GROUND NEUTRAL TO SERVICE DISCONNECT.
- BOND ALL ENCLOSURES & RACEWAY SYSTEMS IN ACCORD W/ NFPA70-250-81
- ALL TESTS SHALL BE MADE IN ACCORDANCE WITH THE LATEST STANDARD OF THE IEEE AND THE NATIONAL CODE. UNLESS OTHERWISE NOTED.
- MINIMUM CONDUCTOR SIZE SHALL BE #12, 800V INSULATION. MINIMUM SIZE CONDUIT SHALL BE 3/4" EMT, TYPE NMC CABLE MAY BE USED WHERE APPROVED, BY LOCAL AUTHORITY.
- CONTRACTOR SHALL INSTALL WIRING & OTHER CIRCUIT COMPONENTS TO MATCH EQUIPMENT ACTUALLY INSTALLED.
- INSTALL GROUND FAULT RECEPTACLES AT LOCATIONS W/IN 5' OF SINKS OR LAVATORIES & EXTERIOR LOCATIONS. EXTERIOR RECEPTACLES SHALL BE WEATHER PROOF.
- INSTALL INSULATED #12 GROUND WIRE FROM TELEPHONE ENTRANCE RACEWAY TO NEAREST WATER LINE, INSTALL SYSTEM IN ACCORD W/ NFPA 70-800
- LABEL ALL SWITCHES & RECEPTACLES BY CIRCUIT #. LABEL ALL CIRCUIT BREAKERS AS TO LOAD SERVED. IN ACCORD W/ NFPA 70-110-22 *# 70-334-13 25*



**ONE LINE DIAGRAM**

**FIXTURE SCHEDULE**

MARK	MANUF.	CAT#	LAMPS	REMARKS
F1				2'x4' SURFACE MT. FLOURESCENT
F2				RECESSED FLUOR. 2'x4'
F7	ALECO	6740	2-34W R.S.	WALL MT.
F10	DUAL-LITE	CSGW-W-WEEP	EXIT	BATTERY & CHARGER
F11	DUAL-LITE	EDC-204	2-LAMP	BATTERY & CHARGER

WHERE FIXTURE IS MARKED W/"EM", FURNISH W/BATTERY & CHARGER FOR EMERGENCY LIGHT. CONNECT CHARGER TO UNSWITCHED CONDUCTOR.

● FLUORESCANT FIXTURES SHALL HAVE SECULAR ALUMINUM REFLECTORS AND PRISMATIC LENS, WITH F 40 ANOSONIC EX50 OR PHILLIPS 3500 LUMAN LAMPS. PROVIDE 2 LAMPS PER FIXTURE, OR USING STANDARD 40WATT LAMPS & FIXTURES, PROVIDE W/4 LAMPS EACH.

F1 USE IN ALL AREAS WHERE FIRE RATED CEILINGS ARE CALLED FOR  
F2 USE IN ALL AREAS WITH SUSPENDED CEILING

**SAFE ZONE FOR HANDICAPED**

PROVIDE FOLLOWING AT EA. EXTERNAL LANDING OF SECOND FLOOR EXIT STAIR & AT TOP LANDING OF INTERIOR STAIRWAY.

- 1. TWO WAY COMMUNICATIONS SYSTEM WITH CALL BUTTON.
- PROVIDE ONE RECEIVER STATION FOR SYSTEM, LOCATED AT CHURCH SECRETARIAL OFFICE.

**LEGEND**

- 2T/40W/RS FIXTURE. ⊕ REPRESENTS FIXTURE WITH ONE LAMP EMERGENCY LIGHT UNIT W/ BATTERY & CHARGER. CONNECT CHARGER TO UNSWITCHED CONDUCTOR.
- EXIT: EXIT LIGHT, SELF POWERED LUMINUS TYPE
- ⊙ SMOKE DETECTOR
- ⊠ SAFE AREA COMMUNICATION UNIT

- ⊕ DUPLEX RECEPTACLE, 20A, 120 VOLT
- ⊕ WEATHER PROOF, GROUND FAULT INTERRUPTER, DUPLEX RECEPTACLE, 20A, 120 VOLT
- ⊕ HOME RUN CIRCUIT, (ONE PHASE, ONE NEUTRAL, ONE GROUND CONDUCTOR)
- ⊕ SWITCH, S.P.S.T., 15A, 120V

**PANEL DATA**

SQ "D" 1 LINE PANEL OR EQUAL  
S.C. CAPACITY 18 KA SYMETRICAL

	TYPE	VOLTAGE	INTERRUPTING CAP
MAIN BRKR-	LA	240	20KA
BRANCH BRKRS			
1 POLE	FA	120	18KA
2 POLE	A	240	18KA

PANEL P-1 120/240 V, 3 PHASE, 4W, 150 AMP MAINS, S/N SURFACE MOUNT W/GROUND BUS KIT NO MAIN BRKR. ALN ALUA S.C. CAPACITY - 10000 A SYA.

CIR. NO.	LOAD DESCRIPTION	#	BREAKER POLE	AMP	BREAKER POLE	AMP	LOAD DESCRIPTION	#	CIR. NO.
1				150		75			2
3	FP-1		3	150		75	A/C - ZONE A		4
5				150		75			6
7				150		75			8
9	LP-1		3	150		75	A/C - ZONE B		10
11				150		75			12
13				150		75			14
15	FP-2		3	150		75	A/C - ZONE C		16
17				150		75			18
19				150		75			20
21	LP-2		3	150		75	A/C - ZONE D		22
23				150		75			24
25				150		75			26
27				150		75	A/C - ZONE E		28
29				150		75			30
31				150		75			32
33				150		75	A/C - ZONE F		34
35				150		75			36
37				70		70			38
39	A/C - ZONE H		3	70		70	A/C - ZONE G		40
41				70		70			42
				70		70			44
				70		70			46
				70		70			48

NOTE: INSTALL BREAKERS FOR ACTUAL SIZE OF A/C EQUIPMENT PURCHASED

PANEL L-1 120/240 V, 3 PHASE, 4W, 150 AMP MAINS, S/N SURFACE MOUNT W/GROUND BUS KIT NO MAIN BRKR. ALN ALUA S.C. CAPACITY - 10000 A SYA.

CIR. NO.		BREAKER POLE	AMP	BREAKER POLE	AMP	CIR. NO.
1	LIGHTS	1	20	20	SPARE	2
3	LIGHTS	1	20	20	SPARE	4
5	LIGHTS	1	20	20	SPARE	6
7	LIGHTS	1	20	20	SPARE	8
9	LIGHTS	1	20	20	SPARE	10
11	LIGHTS	1	20	20	SPARE	12
13	LIGHTS	1	20	20	SPARE	14
15	LIGHTS	1	20	20	SPARE	16
17	LIGHTS	1	20	20	SPARE	18
19	LIGHTS	1	20	20	SPARE	20
21	LIGHTS	1	20	20	SPARE	22
23	LIGHTS	1	20	20	SPARE	24
25	LIGHTS	1	20	20	SPARE	26
27	LIGHTS	1	20	20	SPARE	28
29	LIGHTS	1	20	20	SPARE	30
31	LIGHTS	1	20	20	SPARE	32
33	LIGHTS	1	20	20	SPARE	34
35	LIGHTS	1	20	20	SPARE	36
37	LIGHTS	1	20	20	SPARE	38
39	LIGHTS	1	20	20	SPARE	40

PANEL P-1 120/240V, 3 PHASE, 4W, 150 AMP MAINS, S/N SURFACE MOUNT W/GROUND BUS KIT NO MAIN BRKR. ALN ALUA S.C. CAPACITY - 10000 A SYA.

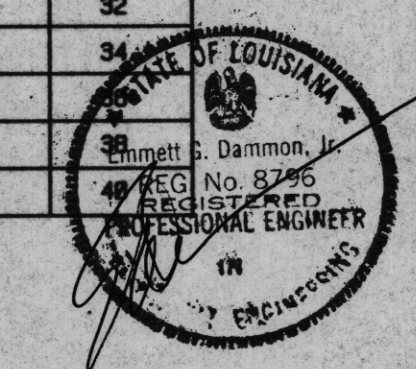
CIR. NO.		BREAKER POLE	AMP	BREAKER POLE	AMP	CIR. NO.
1	OUTLETS	1	20	20	1 HEATER #A	2
3	OUTLETS	1	20	20	1 HEATER #B	4.1
5	OUTLETS	1	20	20	1 HEATER #C	6
7	OUTLETS	1	20	20	1 HEATER #D	8
9	OUTLETS	1	20	20	1 HEATER #E	10
11	OUTLETS	1	20	20		12
13	OUTLETS	1	20	20		14
15	OUTLETS	1	20	20		16
17	OUTLETS	1	20	20	1 M.H. CIRC PUMP	18
19	OUTLETS	1	20	20	SPARE	20
21	OUTLETS	1	20	20	SPARE	22
23	OUTLETS	1	20	20	SPARE	24
25	OUTLETS	1	20	20	SPARE	26
27	OUTLETS	1	20	20	SPARE	28
29	DISPOSAL	1	20	20	SPARE	30
31	DISH WASH	1	20	20	SPARE	32
33		1	20	20	SPARE	34
35		1	20	20	SPARE	36
37		1	20	20	SPARE	38
39		1	20	20	SPARE	40

PANEL L-2 120/240 V, 3 PHASE, 4W, 150 AMP MAINS, S/N SURFACE MOUNT W/GROUND BUS KIT NO MAIN BRKR. ALN ALUA S.C. CAPACITY - 10000 A SYA.

CIR. NO.		BREAKER POLE	AMP	BREAKER POLE	AMP	CIR. NO.
1	LIGHTS	1	20	20	SPARE	2
3	LIGHTS	1	20	20	SPARE	4
5	LIGHTS	1	20	20	SPARE	6
7	LIGHTS	1	20	20	SPARE	8
9	LIGHTS	1	20	20	SPARE	10
11	LIGHTS	1	20	20	SPARE	12
13	LIGHTS	1	20	20	SPARE	14
15	LIGHTS	1	20	20	SPARE	16
17	LIGHTS	1	20	20	SPARE	18
19	LIGHTS	1	20	20	SPARE	20
21	LIGHTS	1	20	20	SPARE	22
23	LIGHTS	1	20	20	SPARE	24
25	LIGHTS	1	20	20	SPARE	26
27	LIGHTS	1	20	20	SPARE	28
29	LIGHTS	1	20	20	SPARE	30
31	LIGHTS	1	20	20	SPARE	32
33	LIGHTS	1	20	20	SPARE	34
35	LIGHTS	1	20	20	SPARE	36
37	LIGHTS	1	20	20	SPARE	38
39	LIGHTS	1	20	20	SPARE	40

PANEL P-2 120/240V, 3 PHASE, 4W, 150 AMP MAINS, S/N SURFACE MOUNT W/GROUND BUS KIT NO MAIN BRKR. ALN ALUA S.C. CAPACITY - 10000 A SYA.

CIR. NO.		BREAKER POLE	AMP	BREAKER POLE	AMP	CIR. NO.
1	OUTLETS	1	20	20	1 HEATER #F	2
3	OUTLETS	1	20	20	1 HEATER #G	4
5	OUTLETS	1	20	20	1 HEATER #H	6
7	OUTLETS	1	20	20	SPARE	8
9	OUTLETS	1	20	20	SPARE	10
11	OUTLETS	1	20	20	SPARE	12
13	OUTLETS	1	20	20	SPARE	14
15	OUTLETS	1	20	20	SPARE	16
17	OUTLETS	1	20	20	SPARE	18
19	OUTLETS	1	20	20	SPARE	20
21	OUTLETS	1	20	20	2 SPARE	22
23	OUTLETS	1	20	20	2 SPARE	24
25	OUTLETS	1	20	20	2 SPARE	26
27	OUTLETS	1	20	20	2 SPARE	28
29		1	20	20	SPARE	30
31		1	20	20	SPARE	32
33		1	20	20	SPARE	34
35		1	20	20	SPARE	36
37		1	20	20	SPARE	38
39		1	20	20	SPARE	40



BEN'S FORD BAPTIST CHURCH  
 DAMMON ENGINEERING INC  
 ARCHITECTS - ENGINEERS  
 737 ROBERT ROAD, SUITE 1  
 SLIDELL, LA 70458  
 BOGALUSA LOUISIANA  
 CHURCH

SECOND FLOOR EDUCATIONAL BUILDING ARCHITECT  
 OR SHALLETTER ARCHITECT  
 SCALE  
 FILE  
 JOB NO.  
 DATE 4/15/98  
 SHEET  
 E-3  
 OF