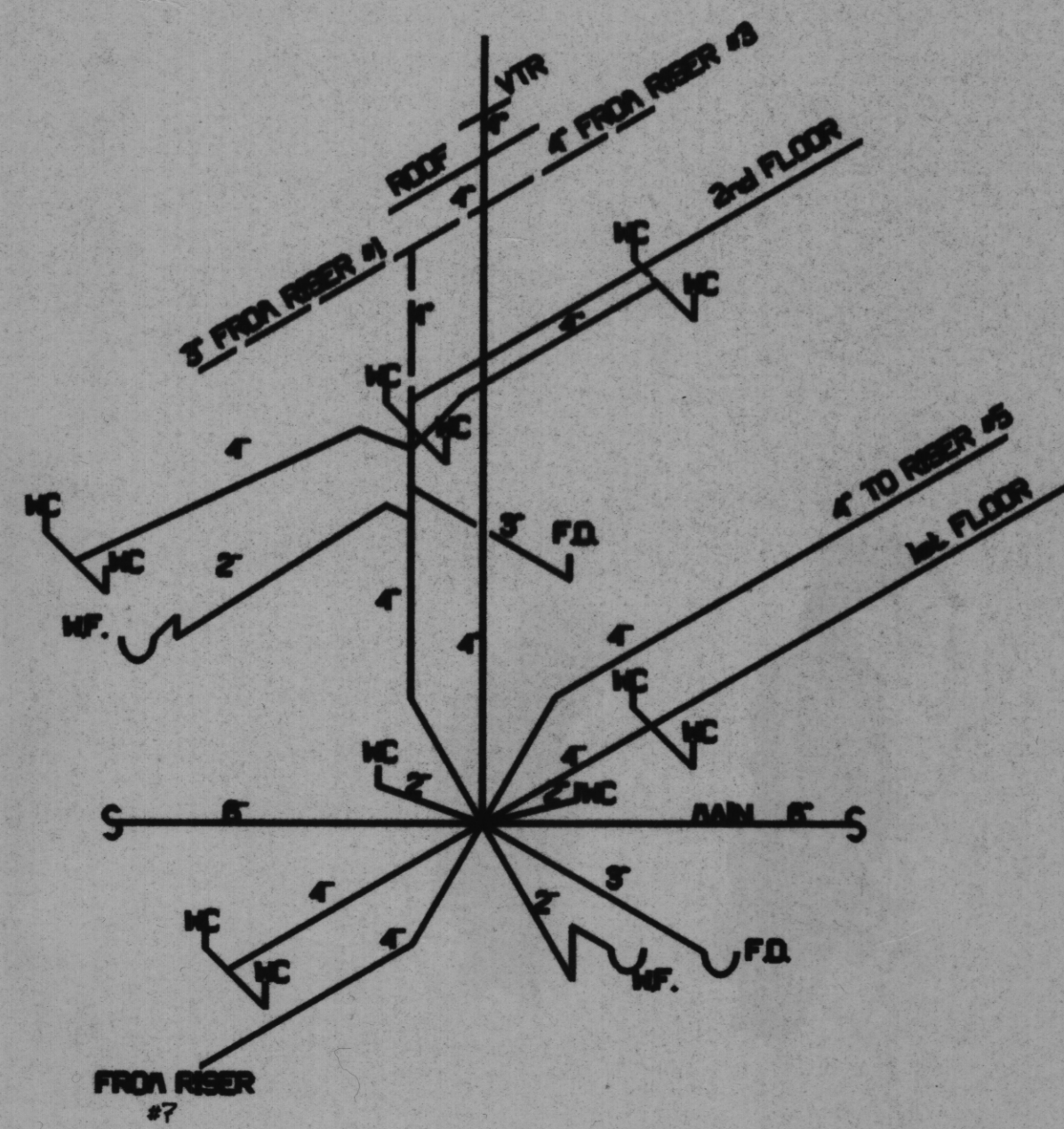
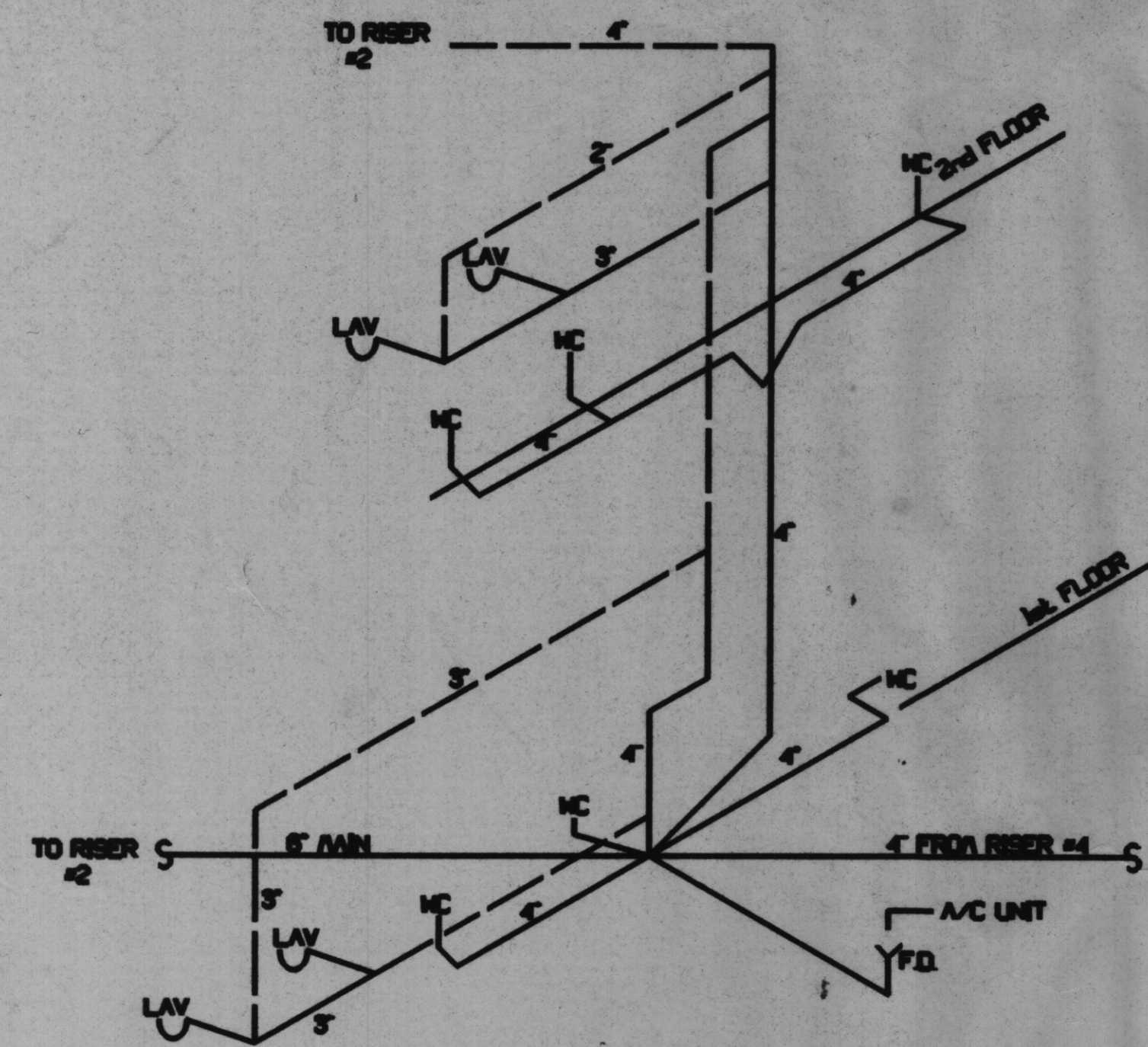


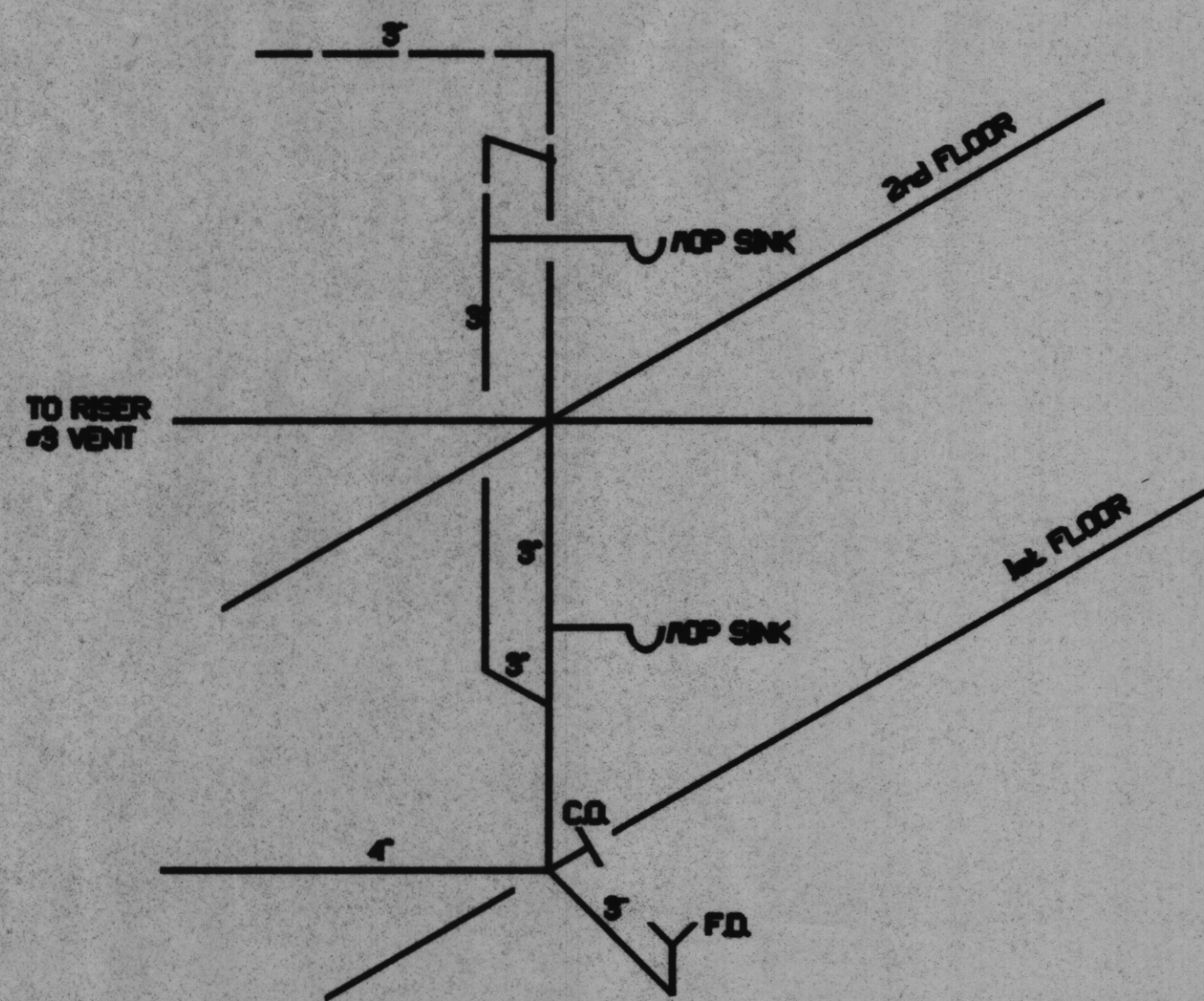
RISER #1



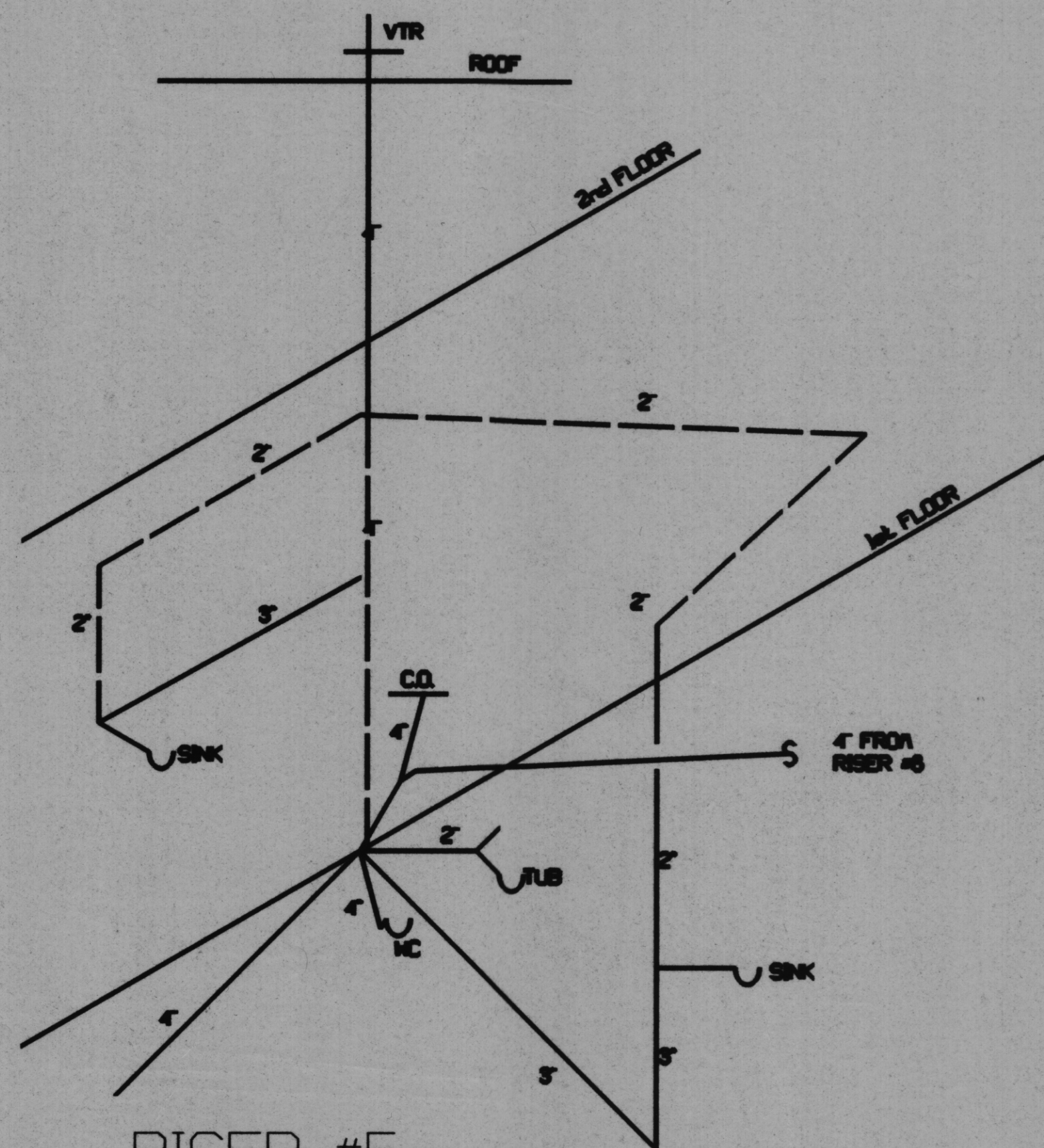
RISER #2



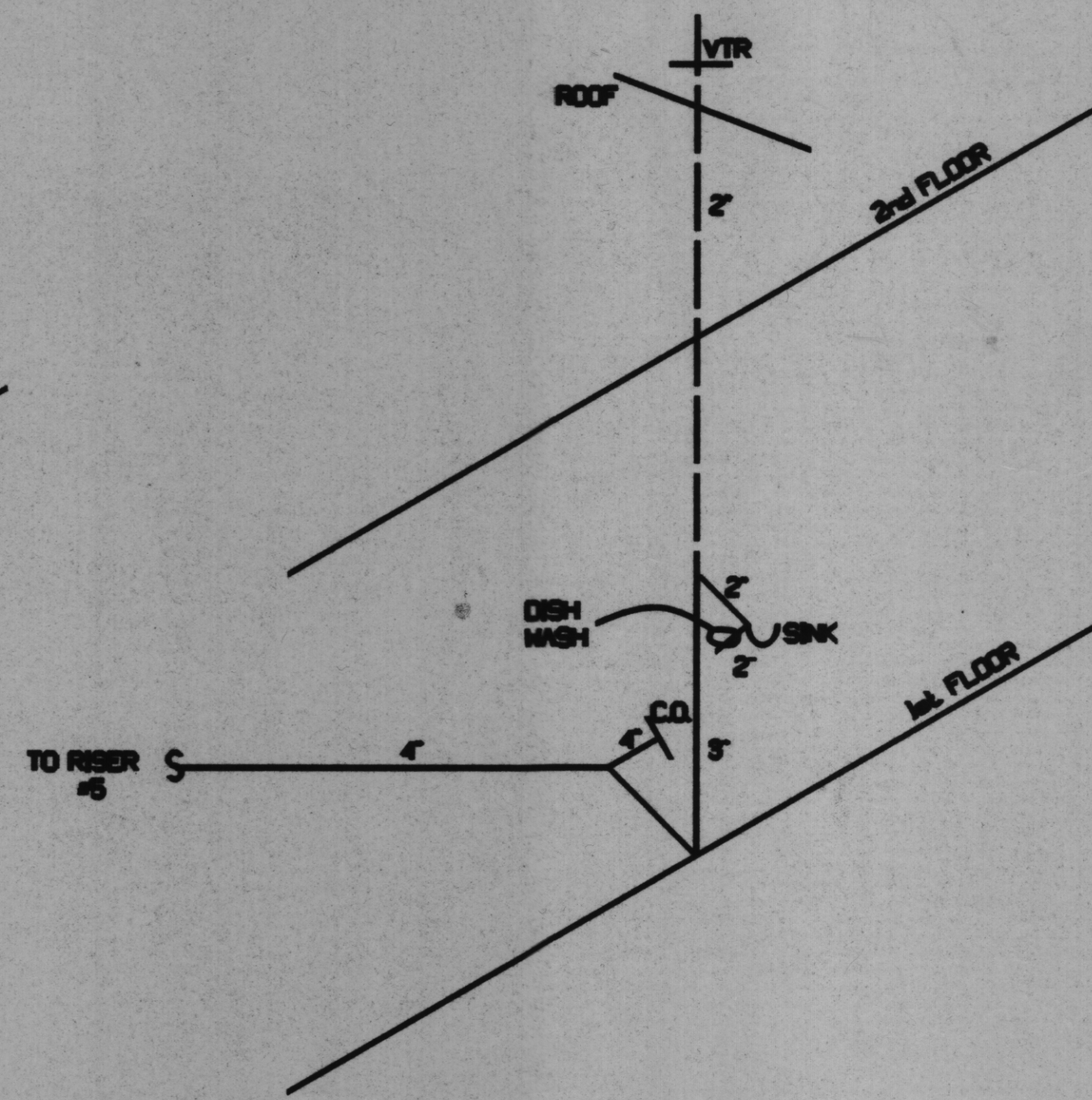
RISER #3



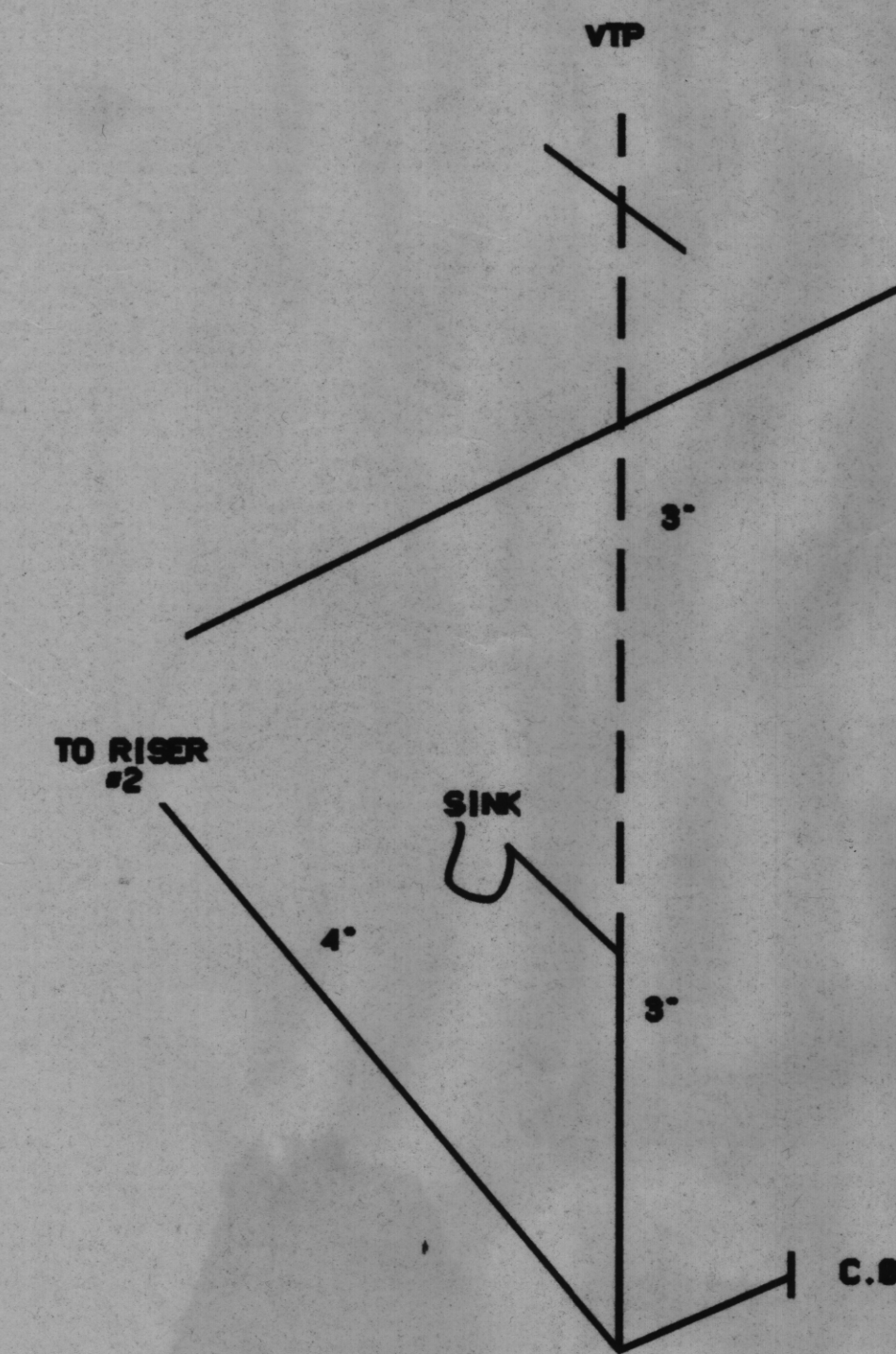
RISER #4



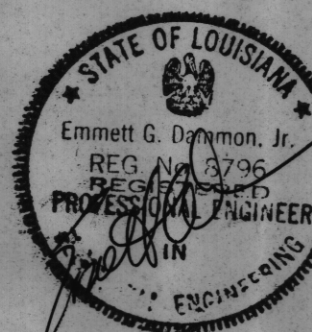
RISER #5



RISER #6



RISER #6



RISER DETAILS  
58521 HWY 439  
BOGALUSA, LA 70427

BEN'S FORD BAPTIST CHURCH  
**DAMMON ENGINEERING, INC.**  
ARCHITECTS - ENGINEERS  
737 ROBERT BLVD., SUITE 1  
SLIDELL, LA. 70458

SCALE: NO SCALE  
FILE  
JOB NO.  
DATE 04/11/00  
SHEET  
P. 1