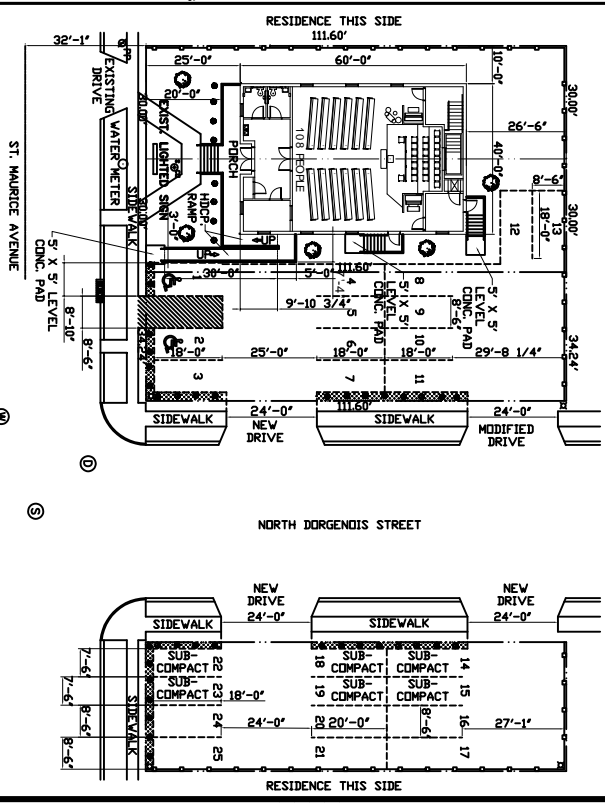
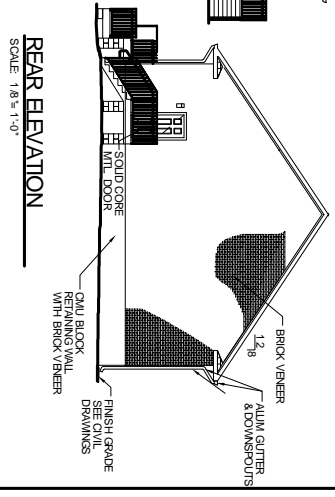
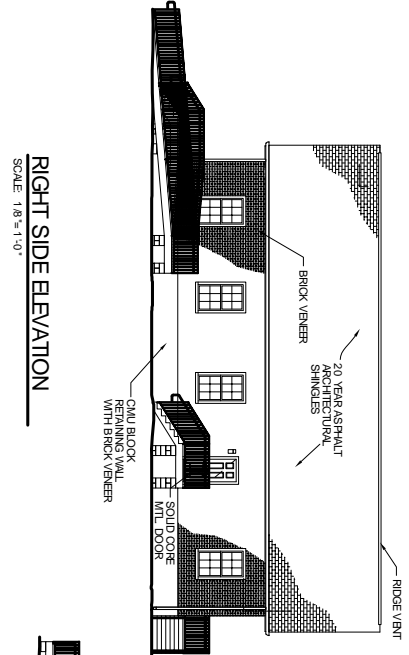
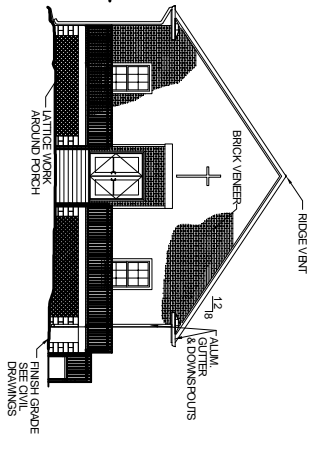
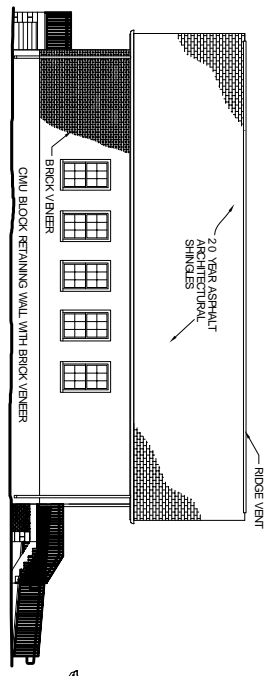


BEULAH LAND BAPTIST CHURCH

2436 ST. MAURICE AVENUE NEW ORLEANS, LA

BUILDING CODE SUMMARY - APPENDIX B

SITE PLAN



- LEGEND**
- PROPERTY LINE
 - ⊙ SEWER MANHOLE
 - ⊕ WATER MANHOLE
 - ⊖ DRAIN MANHOLE
 - ⊗ SEWER CLEANOUT
 - ⊘ FIRE HYDRANT
 - ⊙ WATER VALVE
 - ⊙ POWER OR TELEPHONE POLE
 - ⊙ CATCH BASIN
- NEW 6FT. OPACQUE WOOD FENCE ON TOP OF 18" RETAINING WALL
- NEW LIGHT POLE, SHADDED INWARD
- CHAPE MOTTLE TREE MINIMUM OF 10" TO 12" HIGH; CALIPER OF 1-1/2" MEASURED AT 4-1/2' FT. ABOVE THE GROUND. MINIMUM SPREAD OF PROJECTIONS SHALL BE A MINIMUM OF FIFTEEN (15) FEET.
- DWARF CAMELLIA SHALL BE A MINIMUM OF 2' WHEN PLANTED AND SHALL NOT EXCEED 3' IN HEIGHT AT PLANTING. 2" THICK SHOULDER OF PLANTING SPOTS OTHERWISE SHRUBS SHALL BE PLACED 48" O.C. ELSEWHERE
- GROUND COVER (PINE NEEDLES OR BARK) WITH FLOWERS