

DAMMON
ENGINEERING, INC.

CHIEF ENGINEER
EMMETT
DAMMON, P.E.

CHIEF ARCHITECT
ROBERT
WILTSE

1095 FLORIDA AVENUE
SLIDELL, LA. 70458
OFFICE: 985-649-5832
FAX: 985-641-5950

WEBSITE:
WWW.DAMMONENGINEERING.COM

EMAIL:
DAMMONENG@BELLSOUTH.NET

ARCHITECTURE
ENGINEERING
STUDIES
PLANNING
INVESTIGATION
EXPERT WITNESS

NEW
CHURCH

TABERNACLE
BAPTIST CHURCH
2445 FOURTH AVE.
SLIDELL, LA

SITE
DEMO

REV:

SCALE: AS NOTED

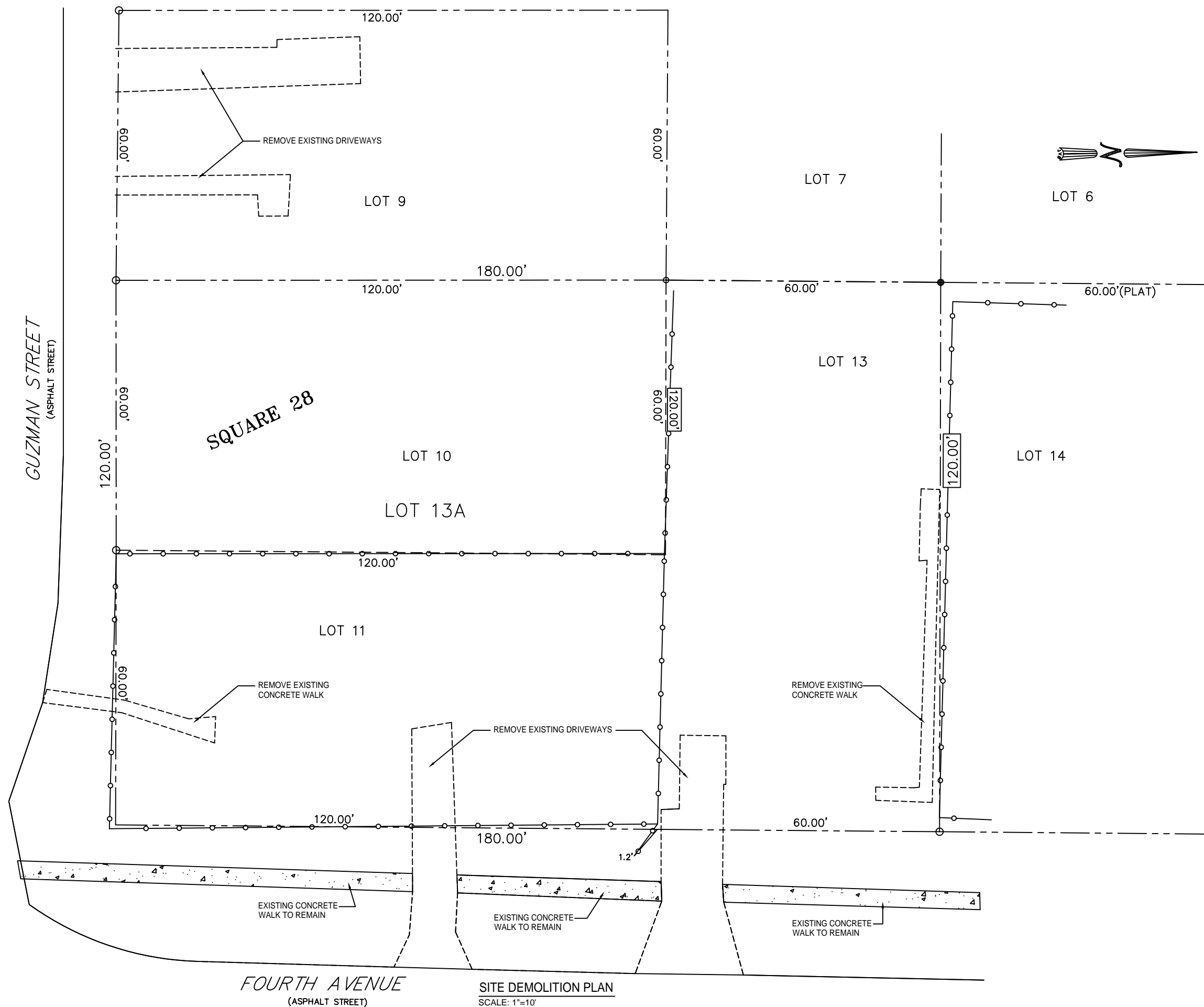
JOB#: 2050

DATE: 2-8-10

SHEET 10

D-1

OF 25



FOURTH AVENUE
(ASPHALT STREET)

SITE DEMOLITION PLAN
SCALE: 1"=10'