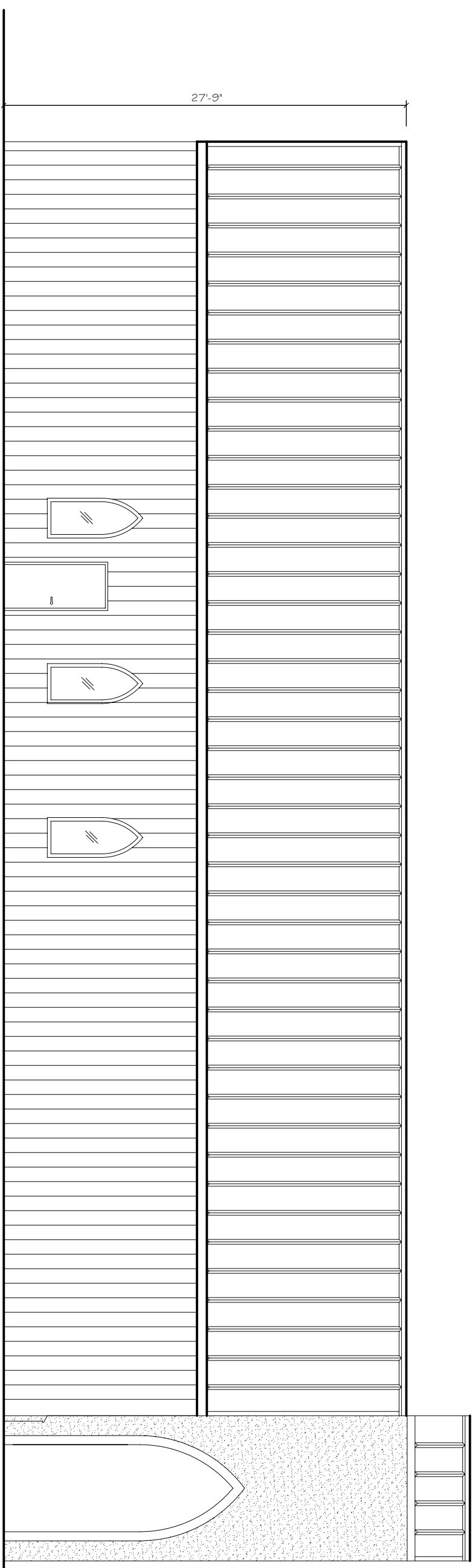
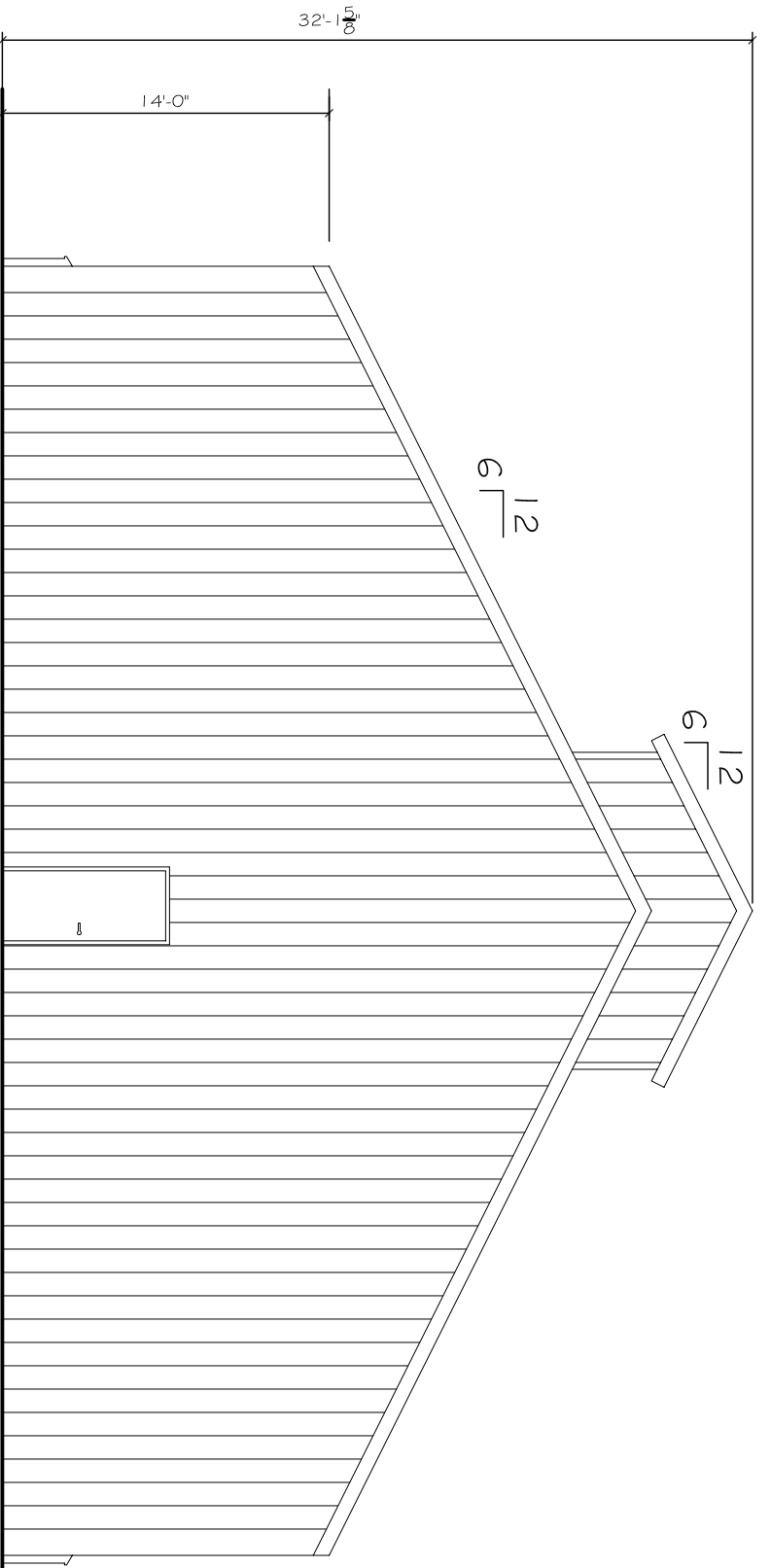


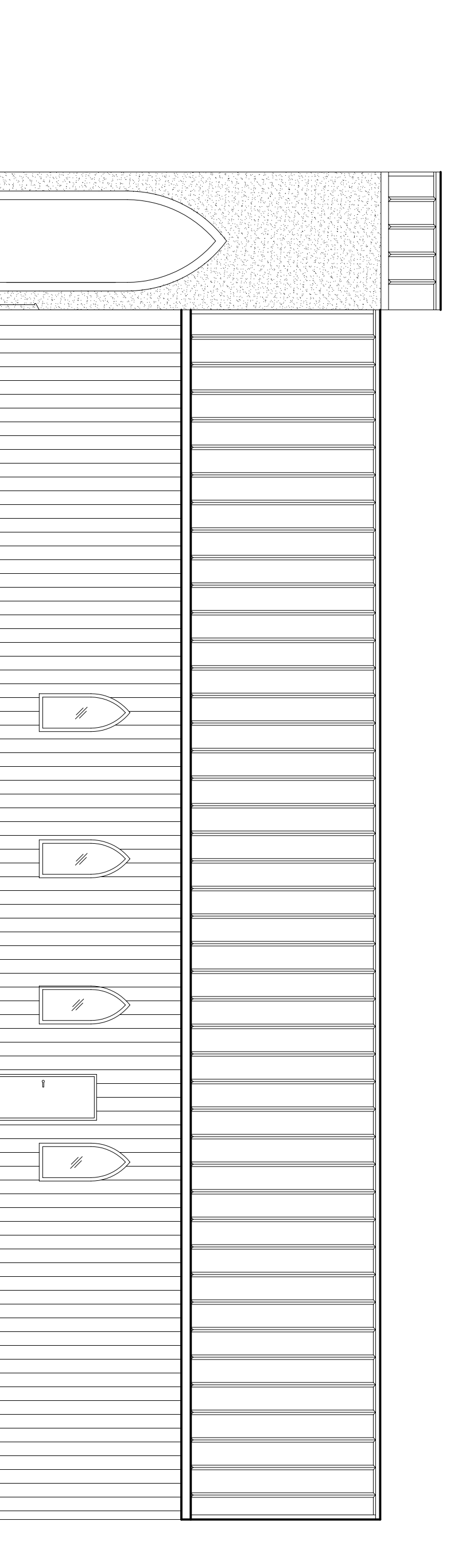
3 FRONT ELEVATION
SCALE: 1/8"=1'-0"



2 LEFT ELEVATION
SCALE: 1/8"=1'-0"



4 REAR ELEVATION
SCALE: 1/8"=1'-0"



1 RIGHT ELEVATION
SCALE: 1/8"=1'-0"

DAMMON
ENGINEERING, INC.
Architects & Engineers

Chief Architect: Kevin J. Kinchen, NCARB
Chief Engineer: Brian Mistich, PE
554 Old Spanish Trail
Slidell, LA 70458
www.dammonengineering.com
info@dammonengineering.com
PH: 985.649.5832
F: 985.641.5950

REVISIONS		DATE
#	DESCRIPTION	

A NEW CATHOLIC CHURCH FOR THE
ARCHDIOCESE OF
NEW ORLEANS
LAGOMBE, LOUISIANA

JOB No: 2250 DATE: JULY 2015
DRAWN BY: JTL CHECKED BY: CKD

The above drawings and specifications, design and arrangements represented hereby and shall remain the property of Dammon Engineering, and no part thereof shall be copied, published or shown, or used in connection with any work or project other than the specific project for which they were prepared and furnished without written consent of Dammon Engineering. Visual contact with these drawings or specifications shall constitute irrevocable evidence of acceptance of these drawings.

DRAWING NUMBER:
A102

SHEET No: **00** of **1**