

LIFE-SAFETY INFORMATION	
APPLICABLE CODES	
NFPA 101 LIFE-SAFETY CODE 2012	
OCCUPANCY TYPE(S) AND CHAPTER(S)	
ASSEMBLY (CHAPTER 12)	
MULTIPLE, MIXED, OR SEPARATE OCCUPANCY (REFERENCE CHAPTER 6)	
N/A	
OCCUPANT LOAD FACTOR (REFERENCE TABLE 7.3.1.2)	
4,924 SF 7 SF PER OCC + 192 SEATS	247 OCCUPANTS
CLASSIFICATION OF HAZARD OF CONTENTS	
(REFERENCE: OCCUPANCY CHAPTER AND 6.2.2. SPECIFY LOW, ORDINARY, OR HIGH)	
CONSTRUCTION TYPE(S) (REFERENCE: CHAPTERS, TABLE A.8.2.1.2 AND COMMENTARY TABLE 6.1 IN HANDBOOK)	
III(222)	
MINIMUM EXIT SEPARATION DISTANCE FOR REMOTELY LOCATED EXITS	
(REFERENCE: SECTION 7.5; SPECIFY 1/2 OR 1/3 DIAGONAL DISTANCE OF AREA SERVED)	
1/2 DIAGONAL =	51'-4"
MAXIMUM DEAD-END CORRIDORS (REFERENCE: OCCUPANCY CHAPTER AND TABLE A.7.6)	
20 FEET	
MAXIMUM COMMON PATH OF TRAVEL DISTANCE (REFERENCE: OCCUPANCY CHAPTER AND TABLE A.7.6)	
20 FEET/75 FEET	
MAXIMUM TRAVEL DISTANCE TO EXITS (REFERENCE: OCCUPANCY CHAPTER AND TABLE A.7.6)	
200 FEET	
*MAIN ENTRANCE MUST BE SIGNED TO ACCOMMODATE 1/2 OCCUPANT LOAD OF BUILDING	
EXTINGUISHMENT REQUIREMENTS NOT SPRINKLERED (NOT REQUIRED)	
DETECTION, ALARM, AND COMMUNICATION SYSTEMS NO	
ALLOWABLE HEIGHT AND BUILDING AREA PER IBC EQUIVALENT CONSTRUCTION TYPE	

BUILDING CODE INFORMATION	
APPLICABLE CODES	
IBC 2012	
ASSEMBLY GROUP AS (IBC 2012 CHAPTER 13)	
OCCUPANT LOAD CALCULATIONS (TABLE 1004.1.2)	
ASSEMBLY (FIXED SEATING) = 192 SEATS	7 SF PER OCCUPANT (NET) 247 OCCUPANTS
CONSTRUCTION TYPE(S) (TABLE 503)	
IIB (SECTION 503)	
ALLOWABLE HEIGHT AND BUILDING AREA LIMITED BY TYPE OF CONSTRUCTION	
MAXIMUM HEIGHT IN STORIES (SECTION 503 & 504, TABLE 503)	2
MAXIMUM AREA IN SQUARE FEET (SECTION 503, 506 & 507, TABLE 503)	9,500 SF


WIND SPEED DESIGN REQUIREMENTS	
THIS BUILDING SHALL BE DESIGNED WITH IBC SEC 1609 AS A FULLY ENCLOSED BLDG USING THE FOLLOWING INFORMATION:	
WIND DESIGN DATA:	
DETERMINATION OF WIND LOADS SHALL BE IN ACCORDANCE WITH IBC SEC 1609.3 (A), (B), OR (C) DEPENDING ON THE RISK CATEGORY	
BASIC WIND SPEED (3 SECOND GUST) =	131 MPH (IBC FIG 1609C)
RISK FACTOR: CATEGORY I BLDG	SURFACE ROUGHNESS = B
TOPOGRAPHIC FACTOR = 1	EXPOSURE = B
DESIGN WIND PRESSURE (ASCE 7-10 TABLE 28.6-1):	31.4 PSF
INTERNAL PRESSURE COEFFICIENT (ASCE 7-10 TABLE 26.11-1):	± 0.18
LIVE LOADS (IBC SEC 1607)	
ASSEMBLY FIXED SEATING (IBC TABLE 1607.1):	60 PSF
PLATFORMS (ASSEMBLY) (IBC TABLE 1607.1):	100 PSF
LOBBIES (IBC TABLE 1607.1):	100 PSF
STORAGE, LIGHT (IBC TABLE 1607.1):	125 PSF
ROOF LIVE LOADS (IBC TABLE 1607.1):	20 PSF UNIFORM, 300 LB CONCENTRATED
SNOW LOADS (IBC TABLE 1608):	
GROUND SNOW LOAD (IBC FIG 1608.2):	5 PSF

FLOOD ZONE INFORMATION	
BASED ON THE SURVEY OF THIS PROPERTY BY J.V. BURKES AND ASSOCIATES, INC. THIS PROPERTY IS IN A SPECIAL FLOOD HAZARD AREA. F.I.R.M. COMMUNITY MAP NO 220204 0010 C, REVISED 4/21/99	
FLOOD ZONE: AE	BASE FLOOD ELEVATION 9.0 NGVD
ELEVATIONS REFER TO NGVD 1929 DATUM	

PROJECT STATISTICS	
SQUARE FOOTAGE	4,924 SF
NEW BUILDING	4,924 SF
TOTAL ENCLOSED SPACE 4,924 SF	
PROJECT LOCATION: OWNER: PRO MULTIS	
FXV VORTSCH ROAD AND LA HWY 434	
LACOMBE, LA 70445	
MADISONVILLE, LA 70447	

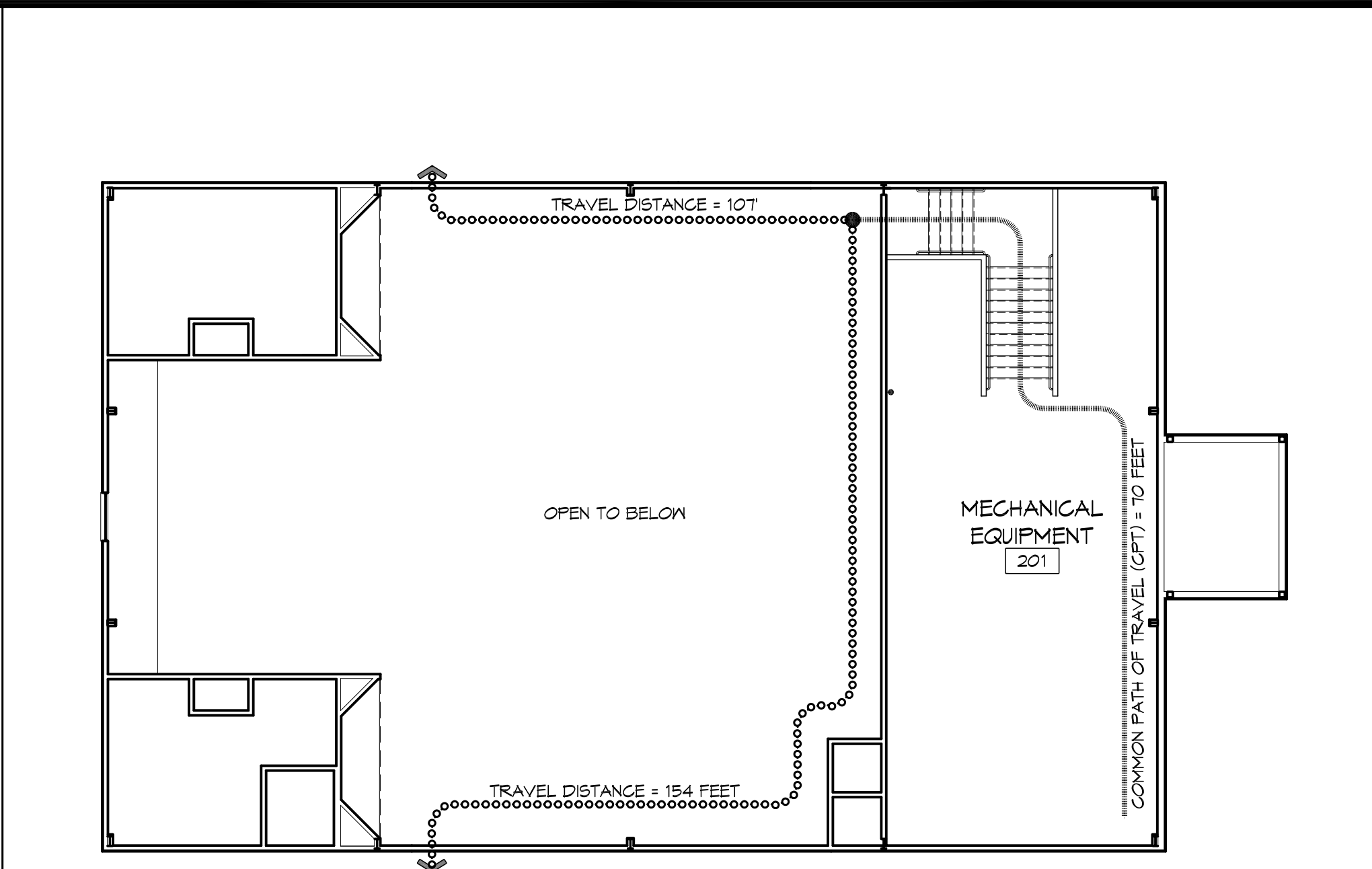
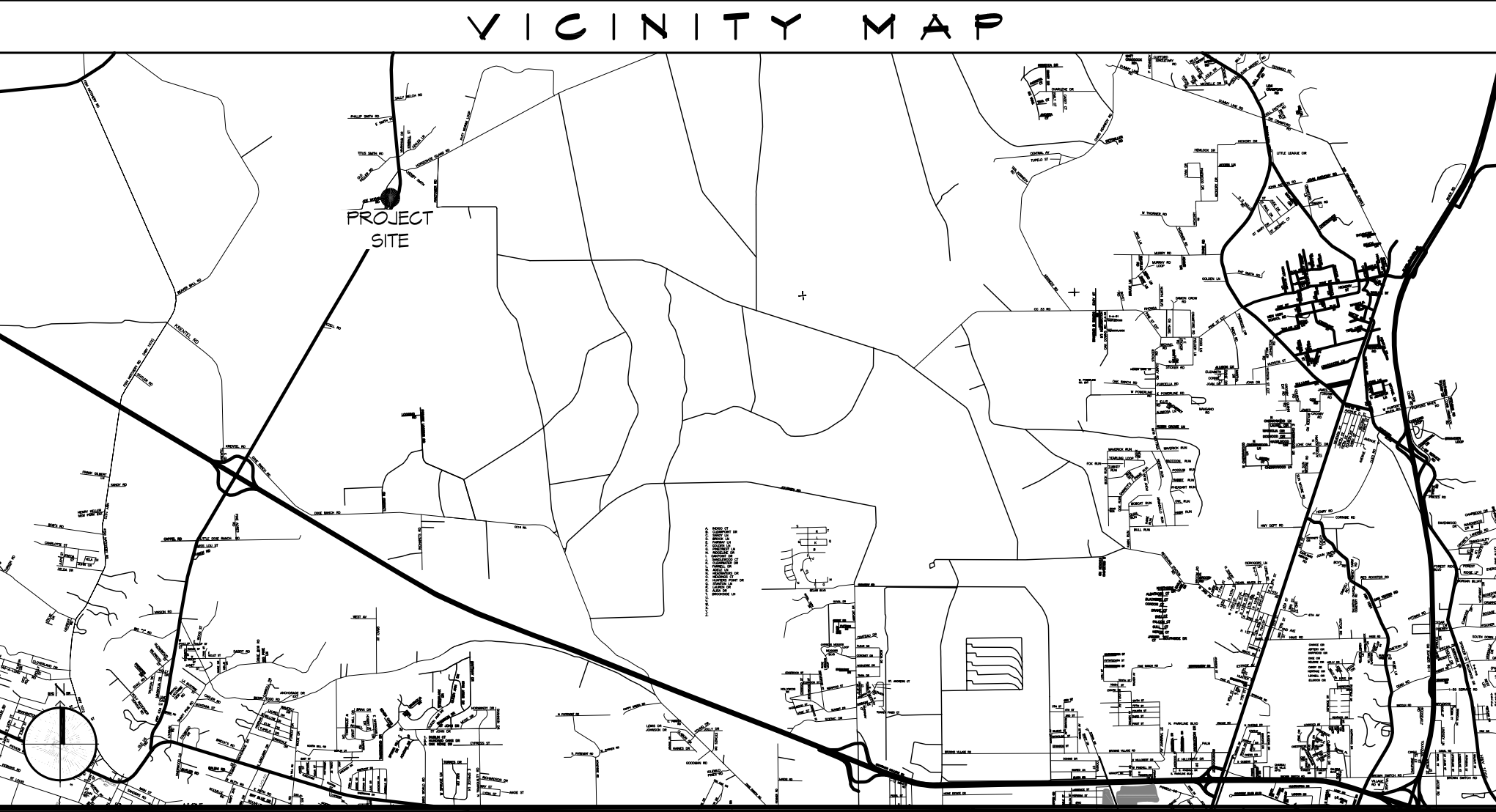
GRAPHIC SYMBOLS	
CEILING HEIGHT	0'-0" LACT
CEILING MATERIAL	LACT
AREA OF DETAIL TO BE ENLARGED	(Dashed circle)
SHEET NUMBER	1/1
DETAIL NUMBER	1/1
DETAIL NUMBER	X/XXX
DETAIL NUMBER	1/1
DETAIL NUMBER	1/1
DETAIL NUMBER	(A)
DETAIL NUMBER	(1)
FINISHED CEILING DESIGNATION SYMBOL	(Symbol)
DETAIL TAG	(Symbol)
ELEVATION TAG	(Symbol)
SECTION TAG	(Symbol)
COLUMN GRID IDENTIFIER	(Symbol)
REVISION TAG & CLOUD	(Symbol)
DRAWING NO	DRAWING TITLE
SCALE	SCALE
TRUE NORTH	DRAWING SCALE
PLAN NORTH	DRAWING SUBTITLE
DRAWING NO	DRAWING TITLE
SCALE	SCALE
DRAWING NO	DRAWING TITLE
SCALE	SCALE
ROOM NAME	DRAWING SUBTITLE
ROOM NUMBER	ENTRY 101
ROOM TAG	ROOM TAG
FIN FL	PARTITION TYPE TAG
0'-0"	ELEVATION TAG
WINDOW - LOUVER OPENING DESIGNATION, REFERENCE WINDOW SCHEDULE	(Symbol)
DOOR OPENING DESIGNATION, REFERENCE DOOR SCHEDULE	(Symbol)
KEY NOTE (SHEET SPECIFIC)	(Symbol)

PRO MULTIS LACOMBE CHAPEL

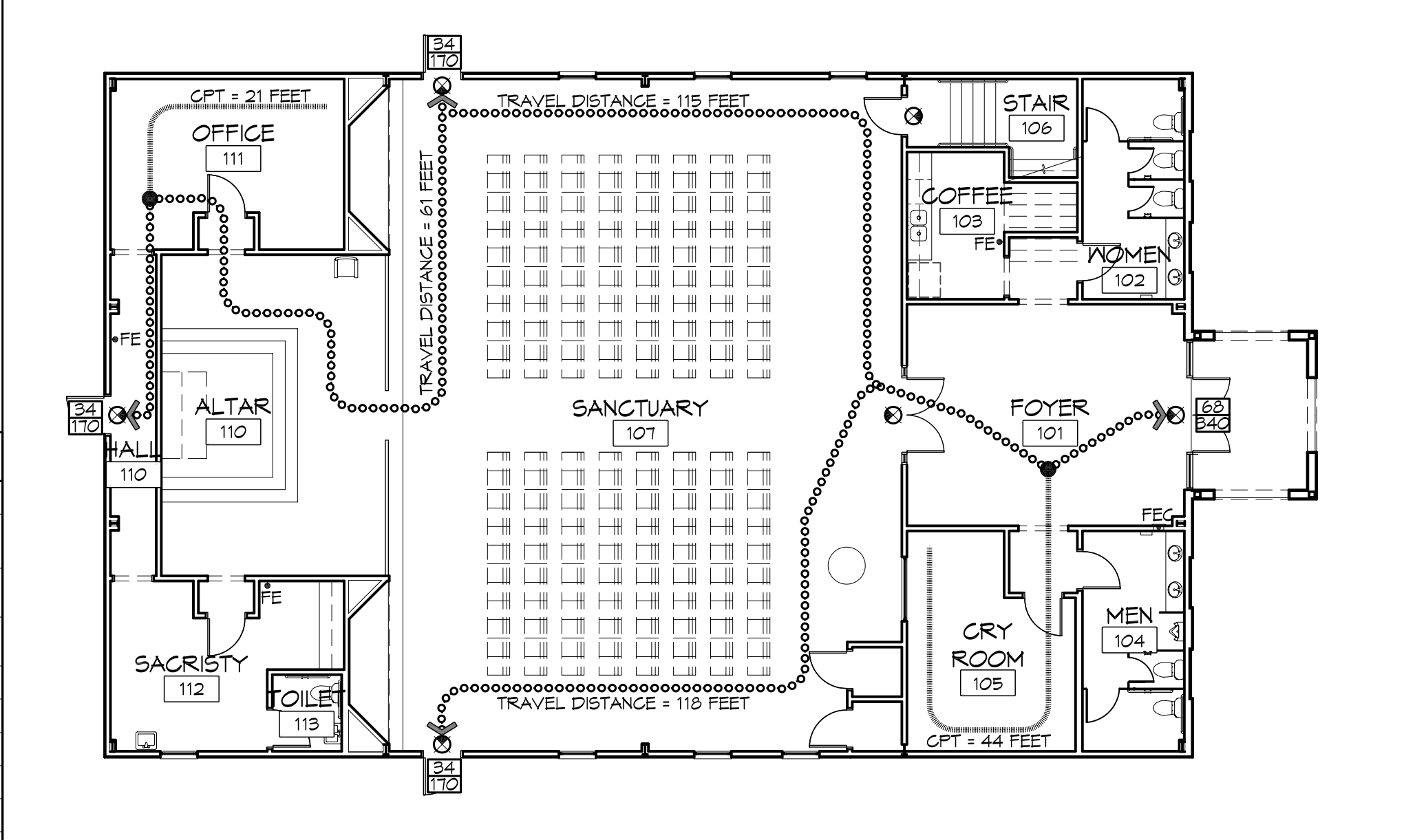


LACOMBE LOUISIANA

LIFE-SAFETY LEGEND	
(Symbol)	EXITS
(Symbol)	DOOR FIRE RATING (MINUTES)
(Symbol)	DOOR WIDTH/EGRESS CAPACITY
(Symbol)	EXIT LIGHT
(Symbol)	FIRE EXTINGUISHER AND CABINET
(Symbol)	FIRE EXTINGUISHER W/ WALL MTD BRACKET
(Symbol)	COMMON PATH OF TRAVEL
(Symbol)	TRAVEL DISTANCE
(Symbol)	DECISION POINT
(Symbol)	SMOKE PARTITION
(Symbol)	ONE-HOUR FIRE RATED PARTITION
(Symbol)	TWO-HOUR FIRE RATED PARTITION
(Symbol)	TWO-HOUR FIRE/SMOKE PARTITION
(Symbol)	FOUR-HOUR RATED PARTITION



2 LIFE-SAFETY PLAN
SCALE: 3/32" = 1'-0"
MECHANICAL MEZZANINE



1 LIFE-SAFETY PLAN
SCALE: 3/32" = 1'-0"
LEVEL 1

SHEET INDEX	
SHEET #	SHEET TITLE
6001	GENERAL PROJECT, LIFE-SAFETY AND CODE INFORMATION
6002	ACCESSIBILITY INFORMATION
C101	SITE PLAN AND PAVING PLAN
C102	SITE PLAN - DRAINAGE
C105	SITE PLAN - EROSION CONTROL & DETAILS
C106	LANDSCAPING PLAN
S101	FOUNDATION PLAN AND DETAILS, FLOOR FRAMING PLAN
A101	ARCHITECTURAL FLOOR PLANS AND OPENING SCHEDULES
A110	ROOF PLAN, REFLECTED CEILING PLAN AND DETAILS
A201	EXTERIOR ELEVATIONS
A401	INTERIOR ELEVATIONS, PARTITION TYPES AND TYPICAL STAIR DET.
P101	PLUMBING PLANS - SEWER AND WATER
M101	MECHANICAL FLOOR PLAN, DETAILS AND SCHEDULES
E101	ELECTRICAL FLOORS - POWER AND LIGHTING

GENERAL NOTES	
1.	ALL MATERIALS AND WORK, INCIDENTAL TO THE CONSTRUCTION OF THIS PROJECT, SHALL CONFORM TO ALL GOVERNING CODES, AND REGULATIONS OF AGENCIES IN AUTHORITY.
2.	CONTRACTOR SHALL PROVIDE ALL PUBLIC PROTECTIONS NECESSARY AS REQUIRED BY LAW.
3.	THE DRAWINGS, SPECIFICATIONS AND ANY SUBSEQUENTLY ISSUED ADDENDA, AMENDMENTS OR SUCH CHANGE ORDERS APPROVED BY THE OWNER AND THE CONTRACTOR ARE PART OF THESE CONTRACT DOCUMENTS.
4.	DO NOT SCALE DRAWINGS. CONSULT WITH THE ARCHITECT REGARDING ANY ITEMS IN THE CONTRACT DOCUMENTS THAT REQUIRE CLARIFICATION.
5.	CONTRACTOR VEHICLES AND EQUIPMENT NECESSARY FOR CONSTRUCTION MAY BE PARKED ON THE SITE. OTHER VEHICLES PARKED ON THE SITE REQUIRE THE OWNER'S PERMISSION.
6.	TRASH SHALL BE REMOVED FROM THE SITE NOT LESS THAN TWICE MONTHLY.
7.	THE GENERAL CONTRACTOR SHALL VERIFY EXISTING CONDITIONS PRIOR TO COMMENCING WORK AND REPORT ANY AND ALL DISCREPANCIES TO THE ARCHITECT.
8.	CONTRACTOR SHALL VERIFY EXISTING CONDITIONS PRIOR TO COMMENCING WORK AND REPORT ANY AND ALL DISCREPANCIES TO THE ARCHITECT.
9.	CONTRACTOR VEHICLES AND EQUIPMENT NECESSARY FOR CONSTRUCTION MAY BE PARKED ON THE SITE. OTHER VEHICLES PARKED ON THE SITE REQUIRE THE OWNER'S PERMISSION.
10.	NAMING A CERTAIN BRAND, MAKE OR MANUFACTURER IS TO DESIGNATE THE GENERAL STYLE, TYPE, CHARACTER AND QUALITY STANDARD OF THE PRODUCT DESIRED. SUBSTITUTION REQUESTS MUST BE SUBMITTED PRIOR TO BIDDING.
11.	ALL MATERIALS/EQUIPMENT SHALL BE INSTALLED PER MANUFACTURER'S RECOMMENDATIONS. WORK NOT CONSISTENT WITH MANUFACTURER'S RECOMMENDATIONS WILL BE REJECTED BY OWNER/ARCHITECT.

DAMMON
ENGINEERING, INC.


Architects & Engineers

www.dammonengineering.com
www.dammonengineering.com
554 Old Spanish Trail
Slidell, LA 70458
PH: 985.649.5832
F: 985.641.5990

REVISIONS

#	DESCRIPTION	DATE

SEAL:



**PRO MULTIS
LACOMBE CHAPEL**

FXV VORTSCH ROAD AND LA HWY 434
LACOMBE, LOUISIANA 70445

JOB NO: 2250 DATE: SEPTEMBER 9, 2015
DRAWN BY: K-K CHECKED BY: K-K

SHEET TITLE:
GENERAL PROJECT,
LIFE-SAFETY, AND
BUILDING CODE
INFORMATION

DRAWING NUMBER:
6001

SHEET No: 1 of 14