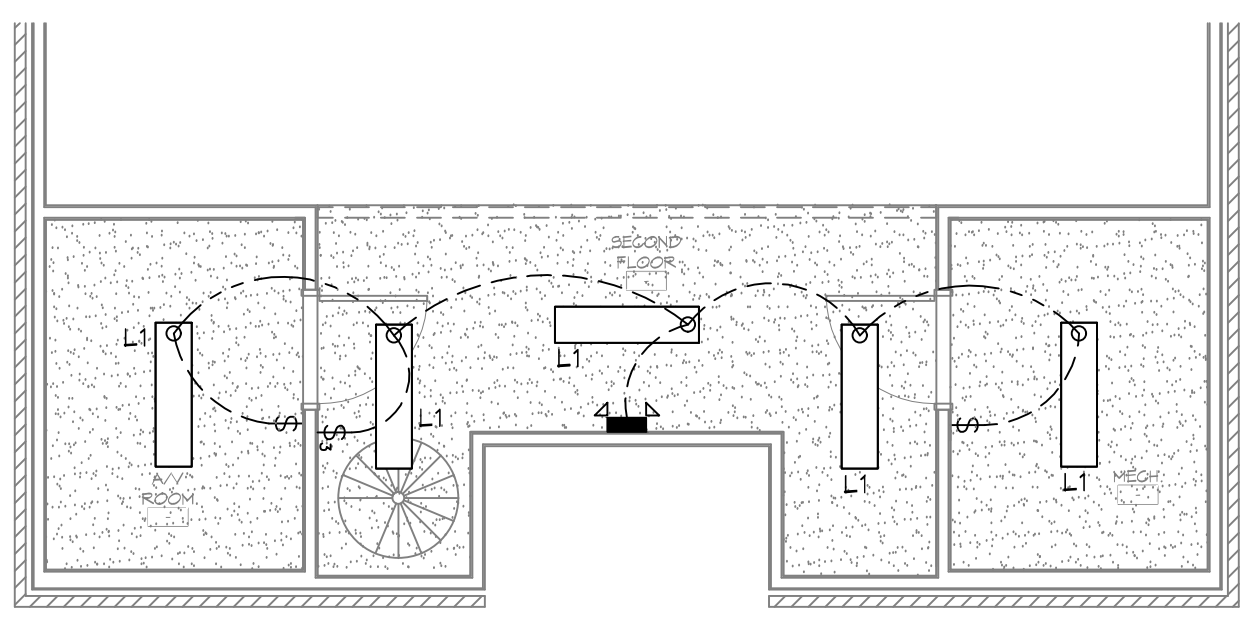


FILE NAME: A:\-CHANGING\2274 - Burch Baptist Church\2274 - Burch Baptist Church.dwg, PLOT DATE: 2/22/16, PLOT TIME: 10:41:04 AM, 2/22/16, 10:41:04 AM



**2 LEVEL 2 LIGHTING PLAN**  
 SCALE: 3/16"=1'-0"



**1 LEVEL 1 LIGHTING PLAN**  
 SCALE: 3/16"=1'-0"

### GENERAL LIGHTING NOTES

1. ALL WORK SHALL COMPLY WITH APPLICABLE NATIONAL, STATE, AND LOCAL CODES, RULES, REGULATIONS, AND REQUIREMENTS OF THE SERVICE UTILITY COMPANY.
2. GENERAL CONTRACTOR SHALL NOTIFY THE ARCHITECT IMMEDIATELY IF ANY CONFLICTS OCCUR BETWEEN LIGHTING AND ANY OTHER TRADE. DO NOT PROCEED WITH INSTALLATION IN THAT AREA UNTIL CONFLICT HAS BEEN RESOLVED TO THE SATISFACTION OF THE ARCHITECT AND ENGINEER.
3. REFER TO ARCHITECTURAL DRAWINGS FOR EXACT LOCATION AND MOUNTING INSTRUCTIONS FOR ALL LIGHT FIXTURES. NOTIFY THE ARCHITECT AND ENGINEER OF ANY DISCREPANCIES BETWEEN THESE PLANS AND THE ARCHITECTURAL PLANS RELATING TO QUANTITY, TYPE AND LOCATION OF DEVICES AND/OR FIXTURES.
4. WHEN SPECIFIC LIGHT FIXTURE HAS BEEN SPECIFIED IN THE FIXTURE SCHEDULE, ELECTRICAL SHALL PROVIDE COMPLETE ASSEMBLY INCLUSIVE ALL PARTS AND HARDWARE TO INSURE PROPER FUNCTIONING FIXTURE.
5. ALL CONDUCTORS SHALL BE #12 AWG UNLESS NOTED OTHERWISE.
6. ALL 120V RUNS LONGER THAN 60 FEET SHALL BE #10 AWG AND 277V RUNS LONGER THAN 150 FEET SHALL BE #10 AWG UNLESS NOTED OTHERWISE.
7. ALL CONDUCTORS SHALL BE COPPER.
8. WHERE CONDUCTOR SIZES ARE NOTED ON DRAWINGS, THAT WIRE SIZE SHALL BE THROUGH THE ENTIRE RUN UNLESS OTHERWISE NOTED.
9. MOUNTED LIGHT SWITCHES 48" AFF UNLESS NOTED OTHERWISE ON ARCHITECTURAL DRAWINGS.
10. ALL GANGED SWITCHES SHALL HAVE A COMMON SEAMLESS FACEPLATE. EACH MULTI-GANGED BOX SHALL BE NO MORE THAN SIX (6) SWITCHES WIDE. WHERE MORE THAN SIX (6) SWITCHES ARE SHOWN AT ONE (1) LOCATION, ADDITIONAL MULTI-GANGED BOXES SHALL BE STACKED VERTICALLY AND THE WIDTH OF THE MULTI-GANGS SHALL BE AS EVEN AS POSSIBLE.
11. EACH DIMMER SWITCH SHALL HAVE A WATTING RATING 25% HIGHER THAN THE TOTAL WATTAGE OF ALL LIGHTS TO BE CONTROLLED BY THE DIMMER. DIMMER SIZES 600, 1000, 1500, AND 2000 WATTS, LUTRON NOVA T-STAR. WHERE SWITCHES ARE GANGED WITH DIMMERS, THE SWITCHES SHALL ALSO BE LUTRON NOVA T-STAR. FLUORESCENT AND LOW VOLTAGE DIMMERS HAL LBE LUTRON NOVA T-STAR.
12. WHERE FLUORESCENT FIXTURES ARE SHOWN TO BE DIMMED, THE FIXTURES SHALL HAVE DIMMING TYPE BALLASTS WHICH ARE COMPATIBLE WITH THE SPECIFIED DIMMERS.
13. WHERE LED FIXTURES/LAMPS ARE SHOWN TO BE DIMMED, THE DIMMER SHALL BE COMPATIBLE WITH THE FIXTURE/LAMP SPECIFIED OR PROVIDED.
14. ALL EMERGENCY LIGHT FIXTURES SHALL HAVE 90 MINUTE BATTERY BACKUP WITH INTEGRAL TEST BUTTON AND SHALL BURN CONTINUOUSLY.
15. ALL FLUORESCENT FIXTURES THAT UTILIZE DOUBLE-ENDED LAMPS AND CONTAIN BALLASTS SHALL BE PROVIDED WITH A DISCONNECTING MEANS IN ACCORDANCE WITH NEC 410.136.

### LEGEND

	EMERGENCY LIGHT FIXTURE		ELECTRIC PANEL BOARD
	EXIT LIGHT FIXTURE - WALL MOUNTED		CIRCUIT HOME RUN
	EXIT LIGHT FIXTURE - CEILING MOUNTED		WALL MTD SPEAKER - PROVIDE RATED HOUSING FOR RATED WALLS WHERE INDICATED
	CEILING FAN		CLNG MTD SPEAKER - PROVIDE RATED HOUSING FOR RATED CEILING WHERE INDICATED
	CLNG MTD FLOOR STRIP FIXTURE		SURFACE MOUNTED LIGHT FIXTURE
	RECESSED CEILING LIGHT FIXTURE		WALL MOUNTED LIGHT FIXTURE
	CLNG HUNG FLOOR STRIP FIXTURE		OUTDOOR LIGHT ON PHOTO TIMER- MTD IN GROUND
	SURFACE MOUNTED LIGHT FIXTURE		PENDANT LIGHT FIXTURE
	WALL MOUNTED LIGHT FIXTURE		EXHAUST FAN - SEE MECH
	CLNG MTD FLOOR FIXTURE		LIGHT SWITCH 120V COMMERCIAL GRADE
	OUTDOOR LIGHT ON PHOTO TIMER- MTD IN GROUND		LIGHT SWITCH - 3-WAY 120V COMMERCIAL GRADE
	PENDANT LIGHT FIXTURE		LIGHT SWITCH - DIMMER 120V COMMERCIAL GRADE
	EXHAUST FAN - SEE MECH		EXTEND TO FIXTURE(S) NOT SHOWN - SEE NOTE

**DAMMON**  
**ENGINEERING, INC.**  
 LOUISIANA & MISSISSIPPI

Chief Engineer: Brian Mistrich, PE  
 554 Old Spanish Trail  
 Slidell, LA 70458  
 www.dammonengineering.com  
 info@dammonengineering.com  
 PH: 985.649.5832 F: 985.641.5950

#	DESCRIPTION	DATE

SEAL:

**RENOVATION**  
**BAYOU BAPTIST**

1941 BULLIVANT DR.  
 SLIDELL, LA 70460  
 JOB No: 2274 DATE: 2/22/16  
 DRAWN BY: PNHY CHECKED BY: CKD

SHEET TITLE:  
LIGHTING PLAN

DRAWING NUMBER:  
**E101**

SHEET No: 1 of #