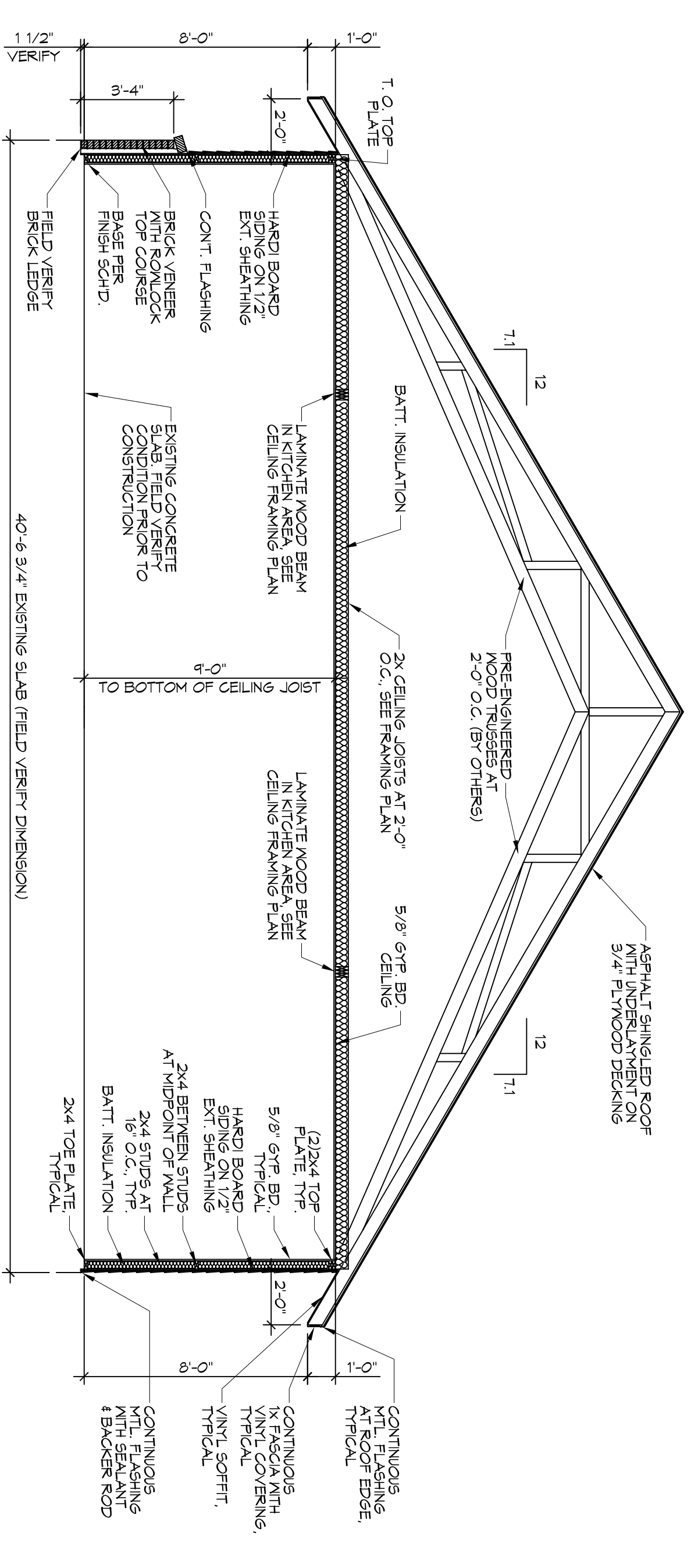
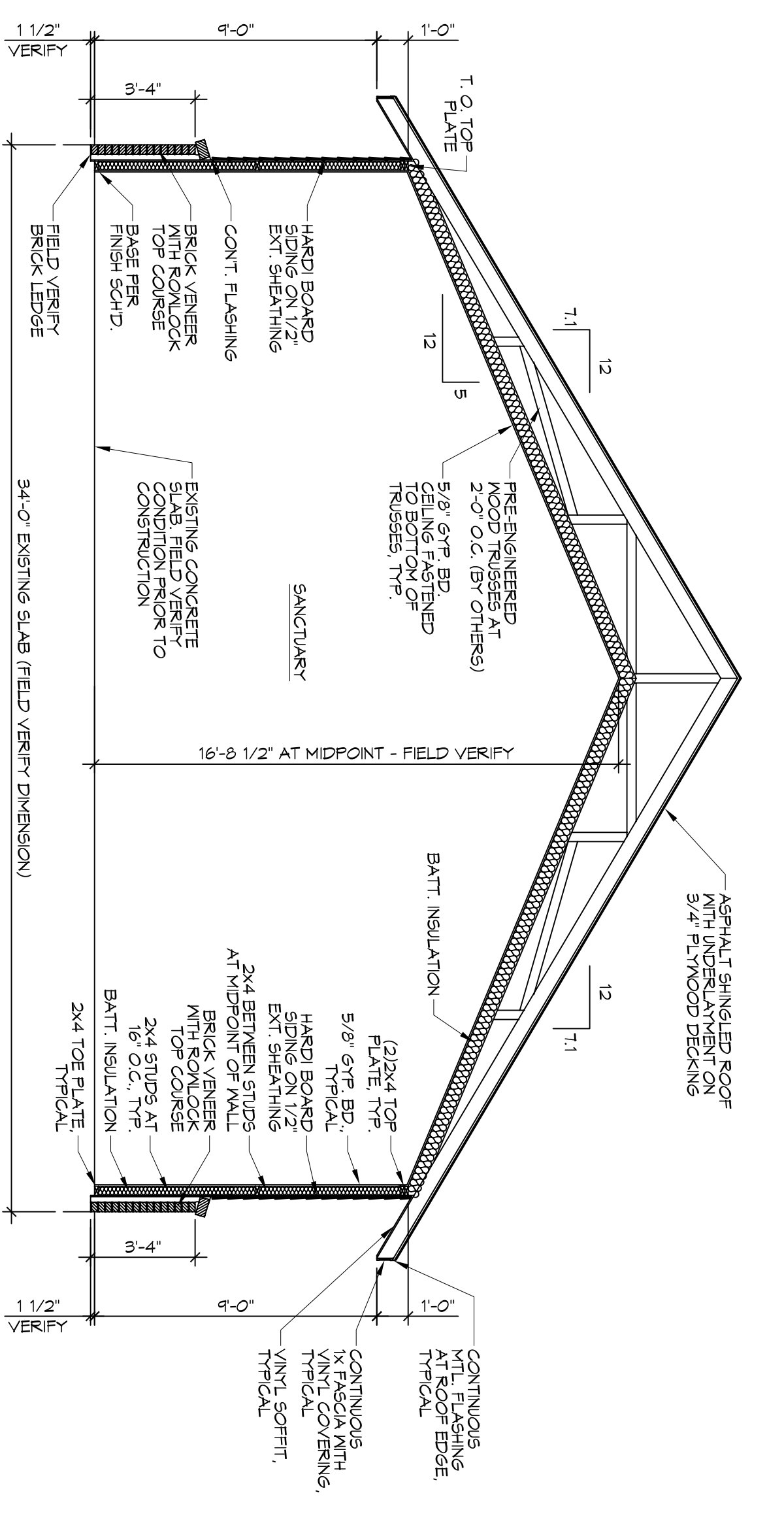


EDUCATIONAL BLDG. LONGITUDINAL SECTION
SCALE: 1/4"=1'-0"



EDUCATIONAL BLDG. CROSS-SECTION
SCALE: 1/4"=1'-0"



SANCTUARY CROSS-SECTION
SCALE: 1/4"=1'-0"

REVISIONS		
#	DESCRIPTION	DATE

DAMMON ENGINEERING, INC.
LOUISIANA & MISSISSIPPI

Chief Engineer: Brian Mistich, PE
554 Old Spanish Trail
Slidell, LA 70458

www.dammonengineering.com
info@dammonengineering.com
PH: 985.649.5832 F: 985.641.5950

RENOVATION
BAYOU BAPTIST
CHURCH
BUILDING SECTIONS

1341 SULLIVAN DR.
SLIDELL, LA 70460

JOB No: 2274 DATE: 05/06/2016
DRAWN BY: JHM CHECKED BY: JMS

Not shown drawings and specifications, design and arrangements represented hereby are intended to be used in accordance with the provisions of Louisiana Engineering Law, and the user thereof shall be deemed to have accepted the responsibility for the use of the same. The user shall be held responsible for the project for which the same have been prepared and developed without written consent of Dammon Engineering, Inc. This drawing is to be used only for the project and location specified herein. No other use or reproduction of this drawing is permitted without the written consent of Dammon Engineering, Inc.

DRAWING NUMBER:
A105

SHEET NO. 11 OF 17