

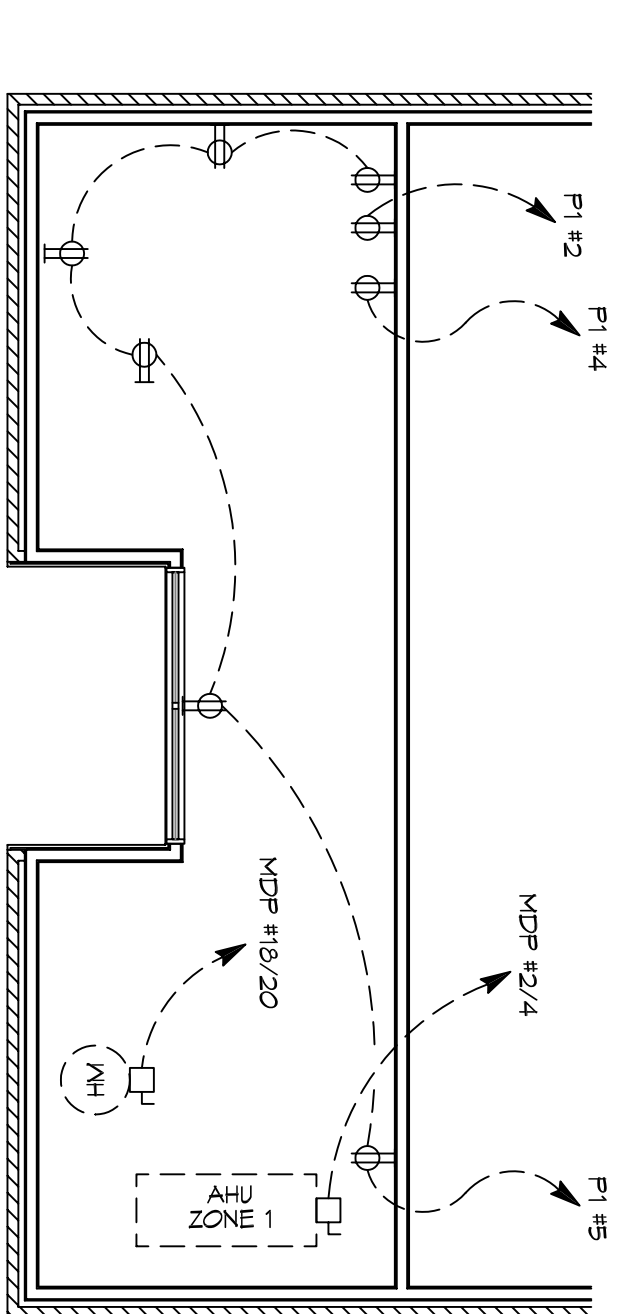
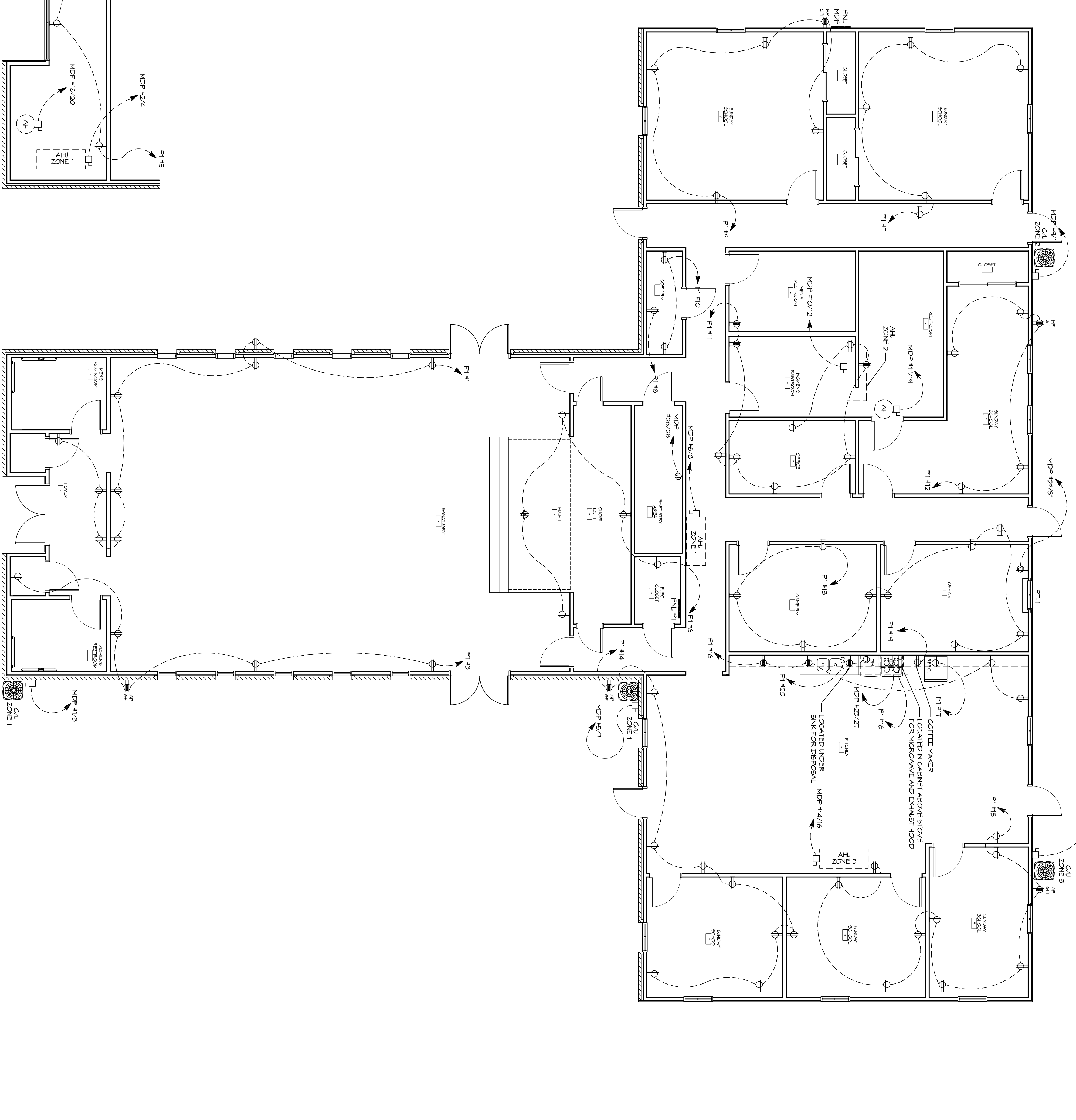
GENERAL ELEC POWER NOTES

1. ALL WORK SHALL CONFORM TO THE LATEST EDITION OF THE NATIONAL ELECTRICAL CODE, THE GOVERNING ELECTRICAL CODE AND ALL OTHER INSPECTION DEPARTMENT JURISDICTION. CERTAIN CERTIFICATES OR APPROVALS MAY BE REQUIRED. ELECTRICAL CONTRACTOR SHALL VERIFY ALL WIRE AND CONDUIT SIZES FOR MECHANICAL EQUIPMENT TO BE INSTALLED.
2. ALL MATERIALS FURNISHED SHALL BE NEW AND SHALL BE U.L. LISTED. THE DRAWINGS INDICATE SIZE AND GENERAL LOCATION OF WORK. SCALE DIMENSIONS SHALL NOT BE USED. THE EXACT LOCATION OF ALL LIGHTING FIXTURES, RECEPTACLES AND TELEPHONE OUTLETS, ETC., SHALL BE DETERMINED BY ACTUAL CONDITIONS IN THE FIELD.
3. PRIOR TO BEGING WORK CONTRACTOR SHALL VISIT THE JOB SITE AND ELECTRICAL CONTRACTOR SHALL COORDINATE HIS WORK WITH OTHER TRADES CONTRACTORS WHOSE WORK MAY AFFECT THIS INSTALLATION.
4. ELECTRICAL CONTRACTOR SHALL COORDINATE INCLUDING ELECTRICAL SERVICE WITH UTILITY COMPANY AND INCLUDE IN HIS BID ALL CHARGES AND FEES INCURRED IN MODIFICATIONS.
5. ELECTRICAL CONTRACTOR SHALL COORDINATE THE TELEPHONE INSTALLATION WITH THE TELEPHONE COMPANY AND THE GENERAL CONTRACTOR.
6. WHEN MORE THAN ONE SWITCH OCCURS IN THE SAME LOCATION, THEY SHALL BE INSTALLED IN A GANG TYPE BOX UNDER ONE COVER PLATE.
7. ELECTRICAL CONTRACTOR, BEFORE INSTALLING ANY OF THE WORK SHALL SEE THAT IT DOES NOT INTERFERE WITH CLEANANCES REQUIRED FOR FINISHED COLUMN, HUNG CEILING, FLAGGER PARTITIONS, WALLS, ETC. AS SHOWN IN THE ARCHITECTURAL DRAWINGS AND DETAILS. IF ANY INTERFERENCE IS ENCOUNTERED, THE CONTRACTOR SHALL NOTIFY THE ARCHITECT IMMEDIATELY. THE CONTRACTOR SHALL MAKE SUCH CHANGES IN THE WORK AS DIRECTED BY THE ARCHITECT, AS WELL AS TO PERMIT THE INSTALLATION OF THE ARCHITECTURAL WORK AS SHOWN ON THE PLANS AND DETAILS.
8. PERSONNEL TEST REQUIRED BY THE OWNER OR THE ENGINEER IN CONNECTION WITH THE OPERATION OF THE ELECTRICAL SYSTEM IN THE BUILDING - ALL TESTS SHALL BE MADE IN ACCORDANCE WITH THE LATEST EDITION OF THE IEEE AND THE NATIONAL ELECTRICAL CODE.
9. MINIMUM CONDUCTOR SIZE SHALL BE #12, 600V INSULATION MINIMUM SIZE CONDUIT SHALL BE 3/4" ELECTRICAL METAL CLIPPING (EMT) FOR NON-METALLIC CABLE (NMC) LOOSE IN CONDUIT. FOR LIGHTS AND RECEPTACLE CIRCUITS IN WOOD FRAME CONSTRUCTION AREAS ONLY, IN STEEL FRAMING AREAS THE USE OF EMT (MINIMUM) IS REQUIRED. EXTERIOR FITTINGS SHALL BE CAST BOXES AND COVERS. INTERIOR FITTINGS SHALL BE STAMPED BOXES.
10. CONTRACTOR SHALL INSTALL WIRING AND OTHER CIRCUIT COMPONENTS TO MATCH EQUIPMENT ACTUALLY INSTALLED.
11. INSTALL GROUND FAULT RECEPTACLES AT RECEPTACLE LOCATIONS WITHIN 5' OF SINKS OR LAVATORIES, AND AT EXTERIOR LOCATIONS. EXTERIOR RECEPTACLES SHALL ALSO BE WATERPROOF.
12. BONDING AND GROUNDING SHALL BE IN ACCORDANCE WITH NFPA 70:200-65, NFPA 250-25, 250-11 & 250-12.
13. GROUND NEUTRAL IN ACCORDANCE WITH NFPA 70:250-230.
14. FIRES SHALL BE IT CLASS 95, 250 VOLT, 200,000 AMP INTERRUPTING CAP.
15. PROVIDE SERVICES OF A FIRE/SMOKE DETECTION AND ALARM COMPANY TO DESIGN AND INSTALL ALARM SYSTEM TO MEET REQUIREMENTS OF THE STATE FIRE MARSHALL AND THE FIRE DISTRICT.
16. EXTERIOR LIGHTING SHALL BE SHADDED OR INWARDLY DIRECTED IN SUCH A MANNER THAT THE LIGHTS DO NOT ILLUMINATE OR CAST BEYOND THE PROPERTY LINE. EXTERIOR LIGHTS SHALL EXCEED ONE FOOT CANDLE AS MEASURED AT THE ADJACENT PROPERTY LINE.
17. ALL ELECTRICAL, MECHANICAL AND PLUMBING PENETRATIONS FIRE PARTITIONS SHALL BE FIRE CALLED. (PENETRATIONS THROUGH RATED CONSTRUCTION SHALL BE SEALED WITH A MATERIAL CAPABLE OF PREVENTING THE PASSAGE OF FLAMES AND HOT GASES WHEN TESTED IN ACCORDANCE WITH ASTM-E914.)
18. VERIFY ELECTRICAL CONNECTIONS PER MANUFACTURERS RECOMMENDATIONS.
19. ALL RECEPTACLES AND SWITCHES ARE TO HAVE WEATHER PROOF COVERS IN APPROPRIATE BAY. 50% OF ALL EXTERIOR WEATHER PROOF COVERS SHALL BE INUSE COVERS.
20. RECOMMENDATIONS.
21. VERIFY ELECTRICAL CONNECTIONS PER MANUFACTURERS RECOMMENDATIONS.

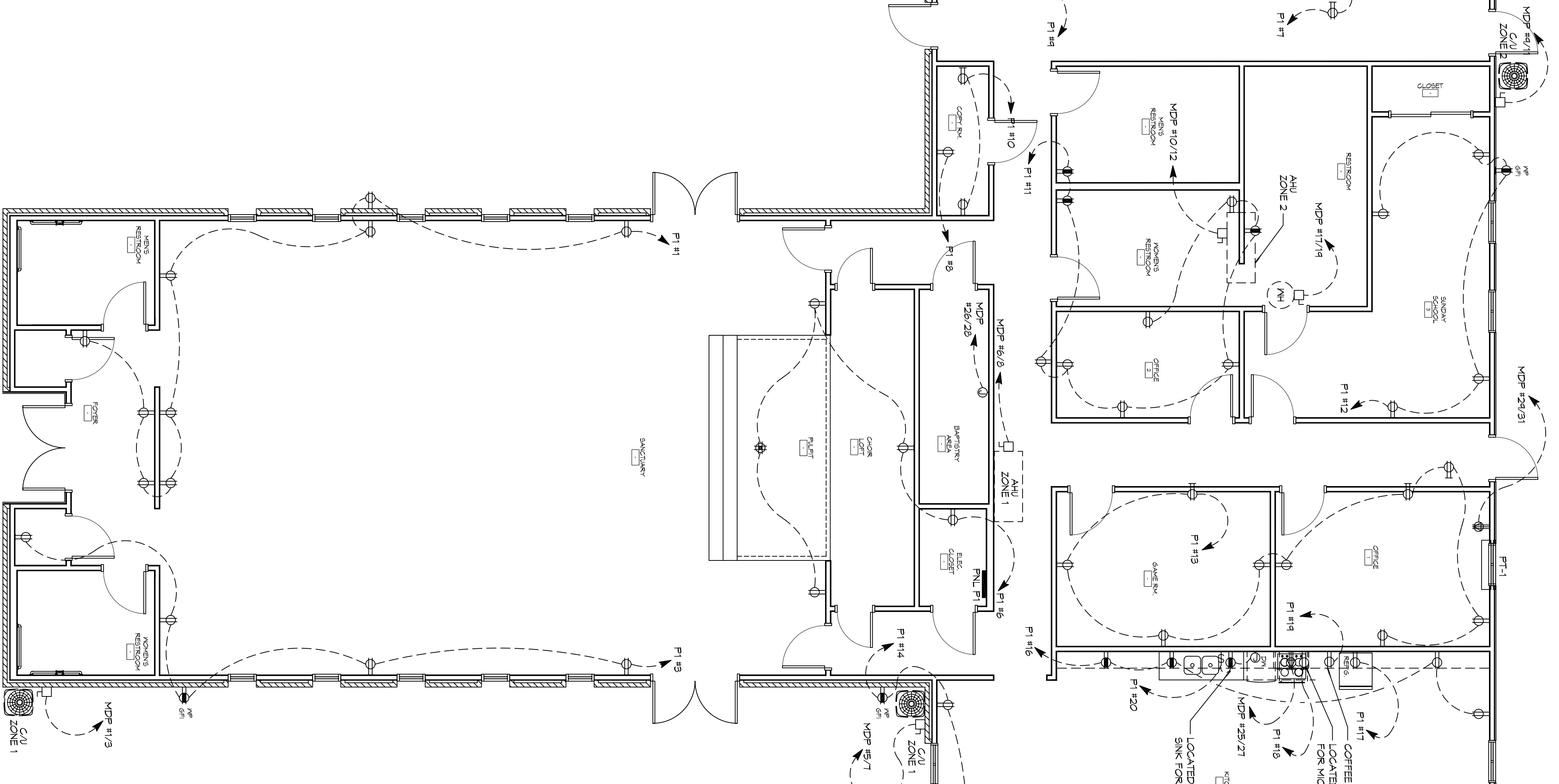
LEGEND

SYMB	DESCRIPTION
⊖	STANDARD 120V DUPLEX RECEPTACLE - NEMA 5-2 OR 15' AFF (UNLESS OTHERWISE NOTED)
⊖	SINGLE-POLE DEVICATED RECEPTACLE - REFERS TO PANEL SCHEDULE FOR CIRCUIT SIZE
⊖	6FDI DUPLEX RECEPTACLE
⊖	6FDI QUAD RECEPTACLE
⊖	220V ELECTRIC DRYER RECEPTACLE - MOUNTED AT 30' AFF
⊖	220V DEDICATED 6FDI RECEPTACLE
⊖	WEATHER PROOF 6FDI DUPLEX RECEPTACLE MOUNTED AT 30' AFF (UNLESS OTHERWISE NOTED)
⊖	STANDARD 120V DUPLEX RECEPTACLE - FLOOR MOUNTED
⊖	STANDARD QUAD RECEPTACLE - FLOOR MOUNTED
⊖	120V 15 AMP DUPLEX RECEPTACLE - WALL MOUNTED
⊖	120V 15 AMP QUADPLEX RECEPTACLE - WALL MOUNTED
⊖	120V 15 AMP QUADPLEX RECEPTACLE - FLOOR MOUNTED
⊖	120V 15 AMP QUADPLEX RECEPTACLE - WALL MOUNTED
⊖	JUNCTION BOX
⊖	GENERATOR BATTERY CHARGER
⊖	2-BUTTON PUSH BUTTON STATION
⊖	COAX-CABLE CONNECTION FOR TELEVISION
⊖	WALL MOUNTED DATA OUTLET
⊖	FLOOR DATA OUTLET
⊖	POWER DISCONNECT
⊖	6AS WATER HEATER ON DECK OR MEZZANINE ABOVE - SIZE AS NOTED ON PLAN
⊖	AIR CONDITIONING AIR HANDLING UNIT ON DECK OR MEZZANINE ABOVE. SEE MECHANICAL DRAWINGS FOR MECHANICAL DRAWINGS
⊖	AIR CONDITIONING CONDENSER UNIT ON CONCRETE PAD. SEE MECHANICAL DRAWINGS
⊖	EXHAUST FAN - SEE MECH.

NOTES:
 * CONNECT ALL EMERGENCY/EXIT LIGHT FIXTURES TO NEAREST CONSTANT POWER SOURCE.



LEVEL 2 POWER PLAN
 SCALE: 3/16"=1'-0"



LEVEL 1 POWER PLAN
 SCALE: 3/16"=1'-0"

DAMMON ENGINEERING, INC.
 LOUISIANA & MISSISSIPPI

Chief Engineer: Brian Mistich, PE
 554 Old Spanish Trail
 Slidell, LA 70458

www.dammonengineering.com
 info@dammonengineering.com
 PH: 985.649.5832 F: 985.641.5950

REVISIONS	
#	DESCRIPTION

RENOVATION
BAYOU BAPTIST
 CHURCH

1341 SULLIVAN DR.
 SLIDELL, LA 70460

JOB No: 2274 DATE: 05/06/2016
 DRAWN BY: JHM CHECKED BY: BAM

SHEET TITLE:
POWER PLAN

DRAWING NUMBER:
E102

SHEET No. 15 OF 17