

LIFE-SAFETY INFORMATION

APPLICABLE CODES	NFPA 101 LIFE-SAFETY CODE 2012
OCCUPANCY TYPE(S) AND CHAPTER(S)	(REFERENCE CHAPTER 6)
ASSEMBLY (CHAPTER 12)	(REFERENCE TABLE 73.1.2)
OCCUPANT LOAD FACTOR	1 PERSON / 11.6 sq ft BENCH 15 OCCUPANTS
ASSEMBLY 228 ft-10in (BENCH)	1 PERSON / 11.6 sq ft BENCH 15 OCCUPANTS
BUSINESS = 1,930 sq ft	100 sq ft PER PERSON 164 OCCUPANTS
CLASSIFICATION OF HAZARD OF CONTENTS	(REFERENCE CHAPTER 8)
CONSTRUCTION TYPE- VB	(REFERENCE CHAPTER AND 6.2.2 SPECIFY LOW ORDINARY, OR HIGH)
MINIMUM EXIT SEPARATION DISTANCE FOR REMOTELY LOCATED EXITS	(REFERENCE SECTION 7.5 SPECIFY 1/2 OR 1/3 DIAGONAL DISTANCE OF AREA SERVED)
MINIMUM EXIT SEPARATION DISTANCE FOR REMOTELY LOCATED EXITS	(REFERENCE SECTION 7.5 SPECIFY 1/2 OR 1/3 DIAGONAL DISTANCE OF AREA SERVED)
MAXIMUM DEAD-END CORRIDORS	(REFERENCE OCCUPANCY CHAPTER AND TABLE A.7.6)
MAXIMUM COMMON PATH OF TRAVEL DISTANCE	(REFERENCE OCCUPANCY CHAPTER AND TABLE A.7.6)
MAXIMUM TRAVEL DISTANCE TO EXITS	(REFERENCE OCCUPANCY CHAPTER AND TABLE A.7.6)
MAXIMUM TRAVEL DISTANCE TO EXITS	(REFERENCE OCCUPANCY CHAPTER AND TABLE A.7.6)
EXTINGUISHMENT REQUIREMENTS	NOT SPRINKLERED (NOT REQUIRED)
DIRECTION, ALARM, AND COMMUNICATION SYSTEMS	NO
ALLOWABLE HEIGHT AND BUILDING AREA	PER IBC EQUIVALENT CONSTRUCTION TYPE

BUILDING CODE INFORMATION

APPLICABLE CODES	IBC 2012 CHAPTER 9)
ASSEMBLY GROUP AS 4 E	(TABLE 1004.1.2)
OCCUPANT LOAD CALCULATIONS	1 PERSON / 11.6 sq ft BENCH 15 OCCUPANTS
ASSEMBLY (FIXED SEATING) = 228 ft-10in (BENCH) + 2 WHEELCHAIR	100 sq ft PER PERSON 15 OCCUPANTS
BUSINESS = 1,930 sq ft	100 sq ft PER PERSON 164 OCCUPANTS
TOTAL OCCUPANTS	164 OCCUPANTS
CONSTRUCTION TYPE(S)	(TABLE 603)
ALLOWABLE HEIGHT AND BUILDING AREA LIMITED BY TYPE OF CONSTRUCTION	1
MAXIMUM HEIGHT IN STORES (SECTION 503 & 504, TABLE 503)	8 ft 9 in
MAXIMUM AREA IN SQUARE FEET (SECTION 503 & 504, TABLE 503) WITH AREA INCREASE	

WIND SPEED DESIGN REQUIREMENTS

THIS BUILDING SHALL BE DESIGNED WITH IBC SEC 1609 AS A FULLY ENCLOSED BLDG USING THE FOLLOWING INFORMATION:

WIND DESIGN DATA DETERMINATION OF WIND LOADS SHALL BE IN ACCORDANCE WITH IBC SEC. 1603.3 (A), (B), OR (C) DEPENDING ON THE RISK CATEGORY

ULTIMATE WIND SPEED =	141 MPH (IBC FIG 1609C)	NOMINAL WIND SPEED =	V _{ASD} = 104 MPH
RISK FACTOR	CATEGORY II	SURFACE ROUGHNESS =	B
TOPOGRAPHIC FACTOR =	1	EXPOSURE =	B
DESIGN WIND PRESSURE (ASCE 7-10 TABLE 28.6-1):	95.5 PSF	INTERNAL PRESSURE COEFFICIENT (ASCE 7-10 TABLE 26.11-1):	+ 0.18
LIVE LOADS (IBC SEC. 1607)	60 PSF	ASSEMBLY FIXED SEATING (IBC TABLE 1607.1):	100 PSF
ASSEMBLY FIXED SEATING (IBC TABLE 1607.1):	100 PSF	LOBBIES (IBC TABLE 1607.1):	100 PSF
CLASSROOMS (IBC TABLE 1607.1):	40 PSF UNIFORM, 1,000 LB CONCENTRATED	ROOF LIVE LOADS (IBC TABLE 1607.1):	20 PSF UNIFORM, 3000 LB CONCENTRATED
SNOW LOADS (IBC TABLE 1609):	5 PSF	GROUND SNOW LOAD (IBC FIG 1609.2):	5 PSF

FLOOD ZONE INFORMATION

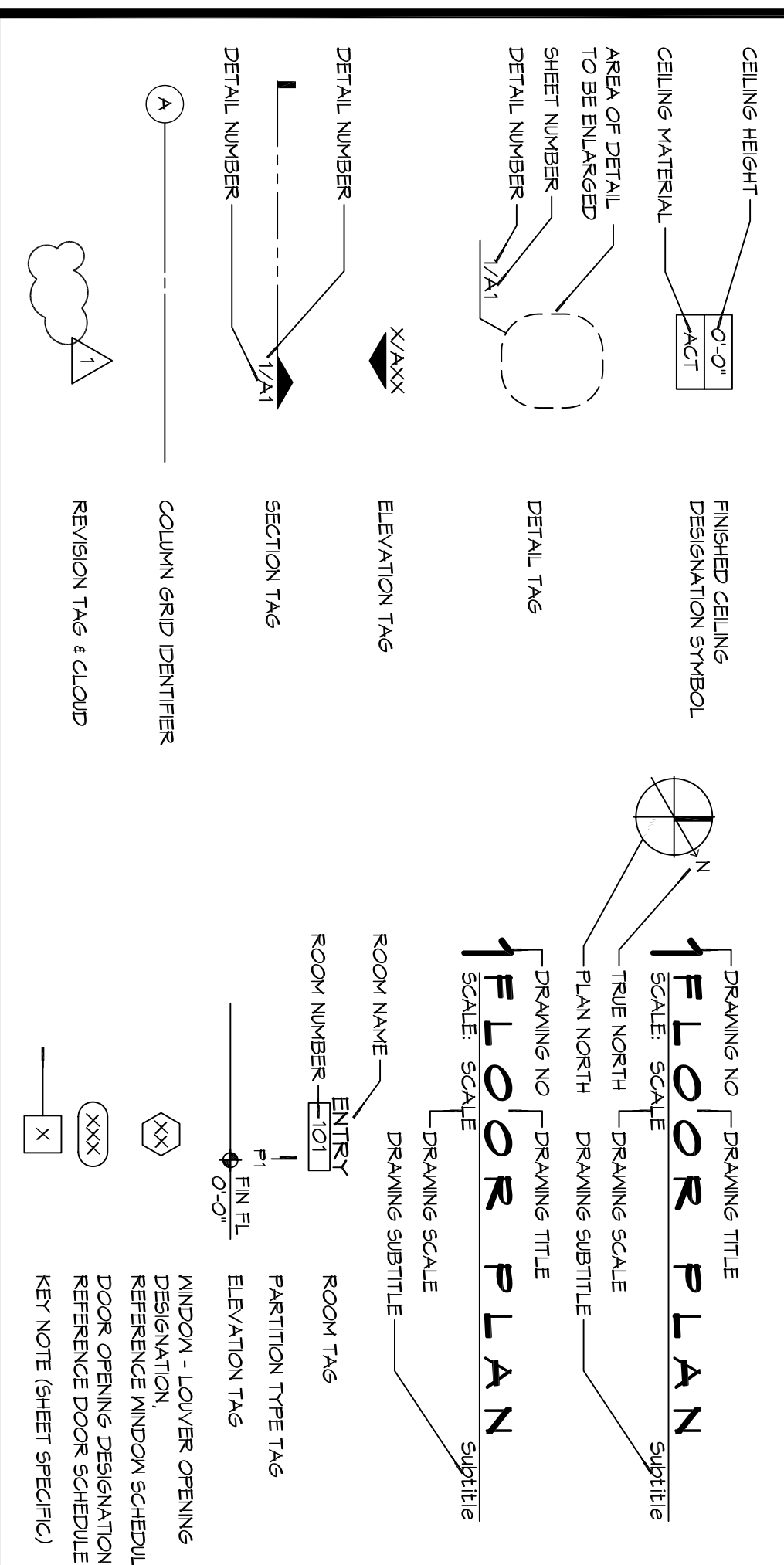
BASED ON THE SURVEY OF THIS PROPERTY BY J.V. BIRKES AND ASSOCIATES, INC. THIS PROPERTY IS IN A SPECIAL FLOOD HAZARD AREA. FIRM COMMUNITY MAP NO. 220204 0010 C, REVISED 4/21/94

FLOOD ZONE:	AE	BASE FLOOD ELEVATION:	100.0 NGVD
ELEVATIONS REFER TO NAVD 1929 DATUM			

PROJECT STATISTICS

NEW BUILDING SQUARE FOOTAGE	TOTAL ENCLOSED SPACE	6,604 SF
THIS CHURCH BURNED DOWN FROM AEGION ON OCTOBER 23, 2015. THE REMAINS WILL BE TORN DOWN AND ONLY THE EXISTING FOUNDATION WILL BE ABLE FOR USE FOR THE NEW CHURCH.		
PROJECT LOCATION:	OWNER:	Pastor Frank Tremé
1341 SULLIVAN DRIVE		
SLIDELL, LA 70460		

GRAPHIC SYMBOLS



BAPTIST CHURCH

SLIDELL LOUISIANA

ALLOWABLE BLDG AREA INCREASE

$$A_a = [A_t + (A_t \times I_f)]$$

$$A_t = 6,000 \text{ s.f.}$$

$$I_f = (F/P - 0.25) \times M/30$$

$$F = 941 \text{ ft}; P = 420 \text{ ft}; M = 24 \text{ ft}$$

$$I_f = ((941/420) - 0.25) \times (24/30)$$

$$I_f = 0.4495$$

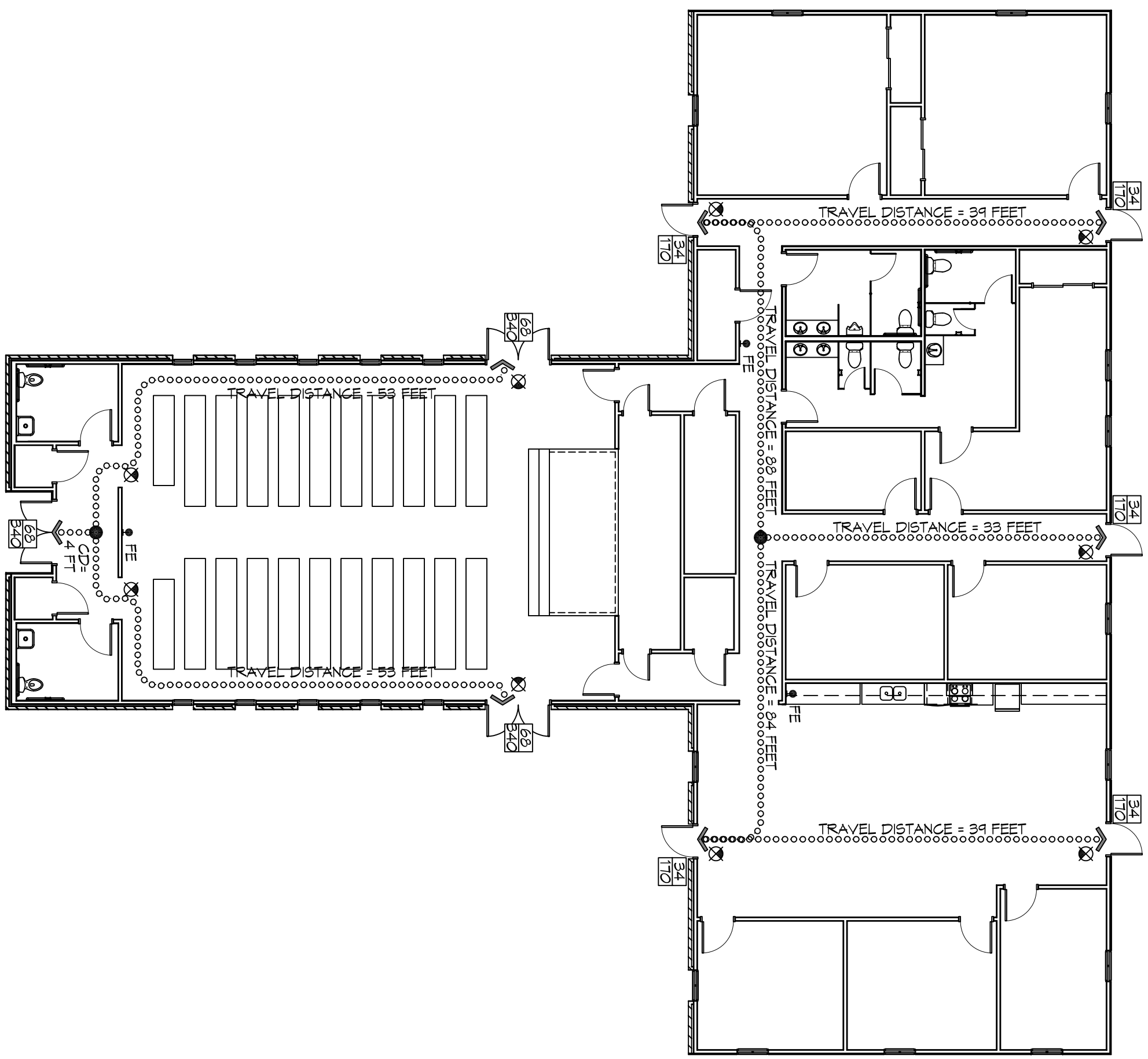
$$A_a = [6,000 + (6,000 \times 0.4495)]$$

$$A_a = 8697 \text{ s.f.}$$

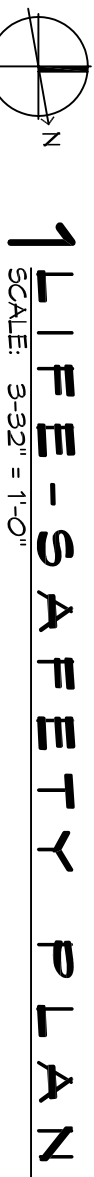
LIFE-SAFETY LEGEND

SYMBOL	DESCRIPTION
(45)	EXITS
(45)	DOOR FIRE RATING (MINUTES)
(45)	DOOR WIDTH/EGRESS CAPACITY
(45)	EXIT LIGHT
(45)	FIRE EXTINGUISHER AND CABINET
(45)	FIRE EXTINGUISHER W/ WALL MTD BRACKET
(45)	COMMON PATH OF TRAVEL
(45)	TRAVEL DISTANCE
(45)	DECISION POINT
(45)	SMOKE PARTITION
(45)	ONE-HOUR FIRE RATED PARTITION
(45)	TWO-HOUR FIRE RATED PARTITION
(45)	FOUR-HOUR RATED PARTITION

VICINITY MAP



LIFE-SAFETY PLAN



SHEET INDEX

SHEET #	SHEET TITLE
6001	CORNER SHEET
6002	ACCESSIBILITY INFORMATION
C101	SITE PLAN
6101	CEILING FRAMING PLAN
6102	ROOF FRAMING PLAN
6103	TYPICAL CONNECTIONS, DETAILS, SCHEDULES, & NOTES
A101	ARCHITECTURAL FLOOR PLANS
A102	ARCHITECTURAL ROOF PLAN
A103	DOOR, WINDOW & FINISH SCHEDULES, ELEVATIONS
A104	REFLECTED CEILING PLANS
A105	ARCHITECTURAL BUILDING SECTIONS
A106	ARCHITECTURAL EXTERIOR ELEVATIONS
P101	PLUMBING PLAN, RISER, & DETAILS
M101	MECHANICAL PLAN SCHEDULES, & DETAILS
E101	Lighting Plan
E102	POWER PLAN
E103	ELECTRICAL PANEL SCHEDULE ONE-LINE DIAGRAM & LOAD SUMMARY

GENERAL NOTES

1. ALL MATERIALS AND WORK INCIDENTAL TO THE CONSTRUCTION OF THIS PROJECT SHALL CONFORM TO ALL GOVERNING CODES AND REGULATIONS OF AGENCIES IN AUTHORITY.
2. CONTRACTOR SHALL PROVIDE ALL PUBLIC PROTECTIONS NECESSARY AS REQUIRED BY LAW.
3. THE DRAWINGS, SPECIFICATIONS AND ANY SUBSEQUENTLY ISSUED ADDENDA, AMENDMENTS OR SUCH CHANGE ORDERS APPROVED BY THE OWNER AND THE CONTRACTOR ARE PART OF THESE CONTRACT DOCUMENTS.
4. DO NOT SCALE DRAWINGS. CONSULT WITH THE ARCHITECT REGARDING ANY ITEMS IN THE CONTRACT DOCUMENTS THAT REQUIRE CLARIFICATION.
5. TRASH SHALL BE REMOVED FROM THE SITE NOT LESS THAN THREE MONTHS.
6. THE GENERAL CONTRACTOR SHALL VERIFY EXISTING CONDITIONS PRIOR TO CONSTRUCTION AND REPORT ANY AND ALL DISCREPANCIES TO THE ARCHITECT.
7. CONTRACTOR VEHICLES AND EQUIPMENT NECESSARY FOR CONSTRUCTION SHALL BE PARKED ON THE SITE.
8. CONTRACTOR SHALL MAINTAIN ACCESS TO ALL UTILITIES AND SHALL MAINTAIN THE GENERAL STYLE, TYPE CHARACTER AND QUALITY STANDARD OF THE PRODUCT DESIRED. SUBSTITUTION REQUESTS MUST BE SUBMITTED PRIOR TO BIDDING.
9. ALL MATERIALS, EQUIPMENT SHALL BE INSTALLED PER MANUFACTURERS RECOMMENDATIONS. WORK NOT CONSISTENT WITH MANUFACTURERS RECOMMENDATIONS WILL BE REJECTED BY OWNER/ARCHITECT.

DAMMON ENGINEERING, INC.

LOUISIANA & MISSISSIPPI

Chief Engineer: Brian Mistich, PE
554 Old Spanish Trail
Slidell, LA 70458

www.dammonengineering.com
info@dammonengineering.com
PH: 985.649.5832 F: 985.641.5950

#	DESCRIPTION	DATE

JMS	05/12/2016	2274
JTL	CHECKED BY:	DRAWN BY:

1341 SULLIVAN DR.
SLIDELL, LA 70460

JOB No: 2274 DATE: 05/12/2016

DRAWN BY: JTL CHECKED BY: JMS

SHEET TITLE: GENERAL PROJECT, LIFE-SAFETY, AND BUILDING CODE INFORMATION

DRAWING NUMBER: 6001

SHEET NO. 1 OF 17