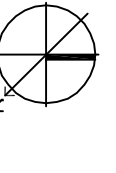
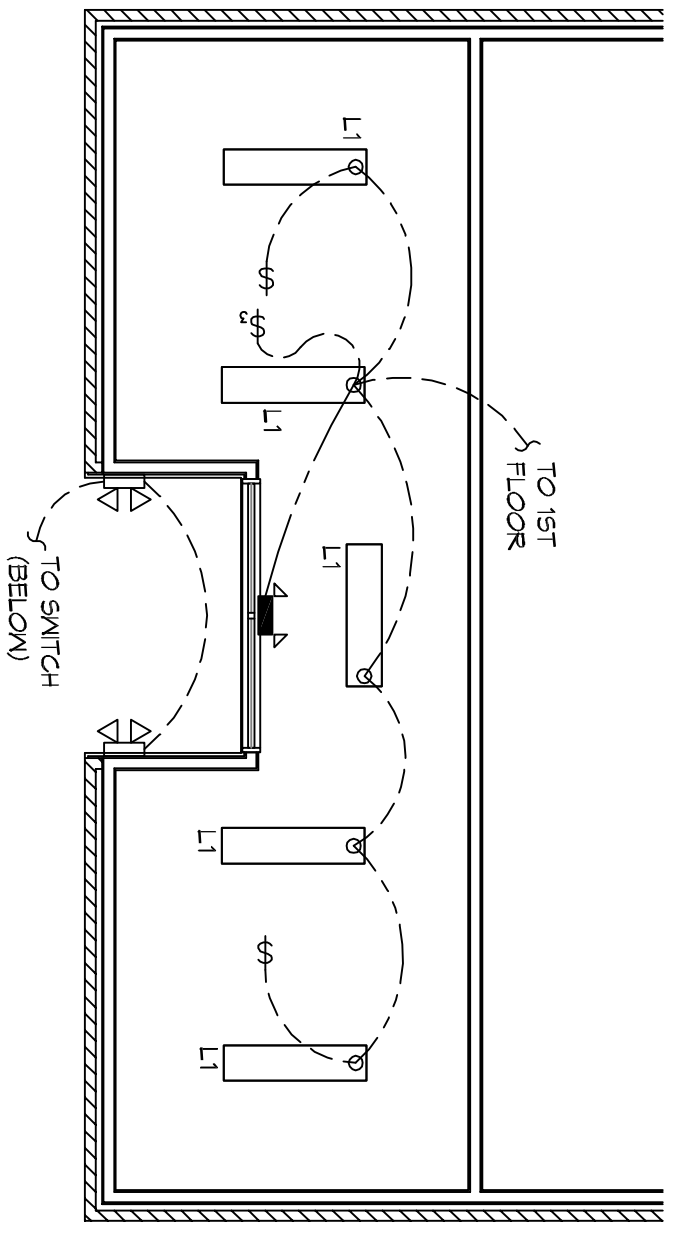
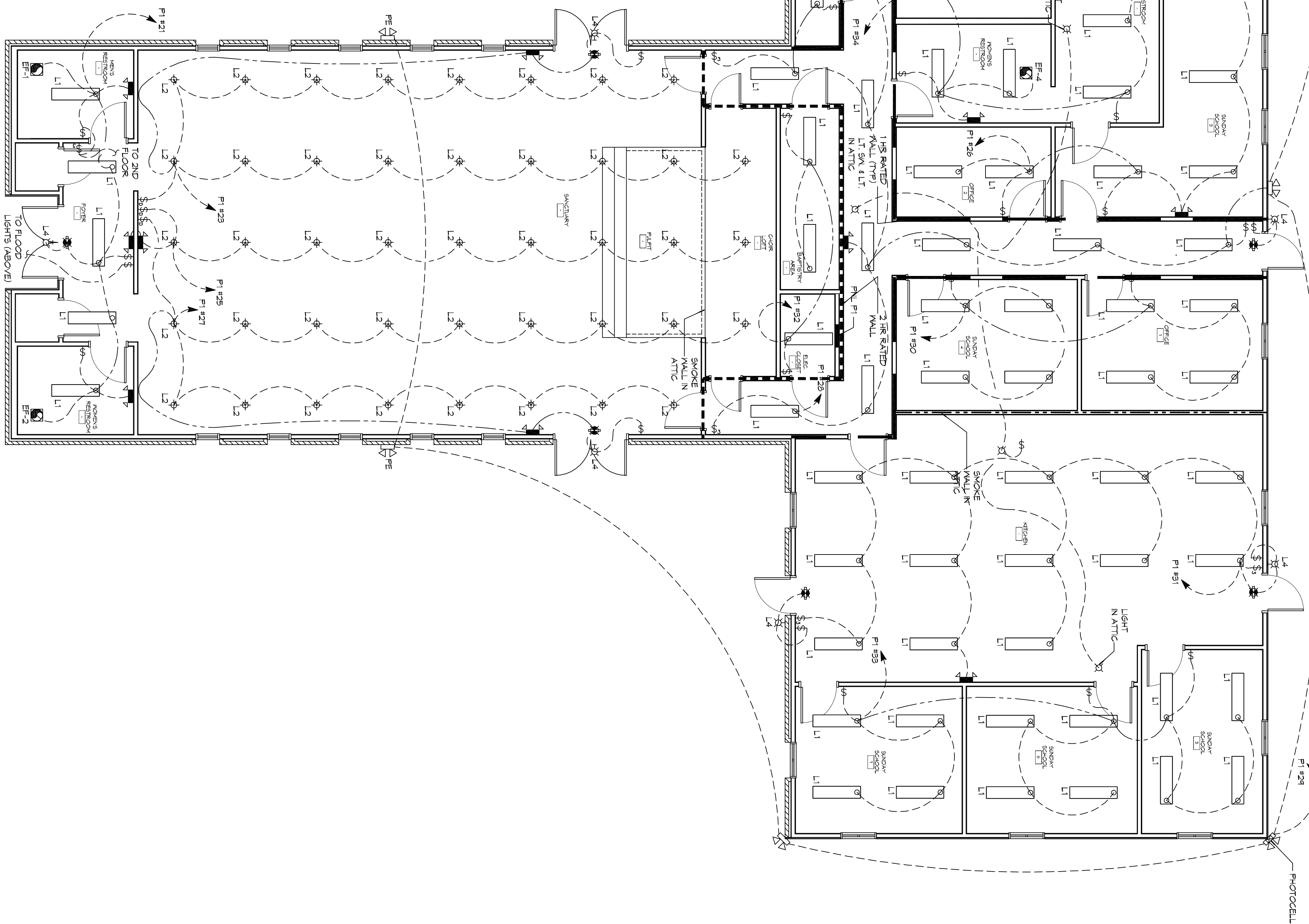


2 LEVEL 2 LIGHTING PLAN
SCALE: 3/16"=1'-0"



1 LEVEL 1 LIGHTING PLAN
SCALE: 3/16"=1'-0"



GENERAL NOTES

1. ALL WORK SHALL COMPLY WITH APPLICABLE NATIONAL, STATE, AND SERVICE UTILITY CODES, REGULATIONS, AND REQUIREMENTS OF THE GENERAL CONTRACTOR SHALL NOTIFY THE ARCHITECT IMMEDIATELY IF ANY CONFLICTS OCCUR BETWEEN LIGHTING AND ANY OTHER TRADE. DO NOT PROCEED WITH INSTALLATION IN THAT AREA UNTIL CONFLICT HAS BEEN RESOLVED TO THE SATISFACTION OF THE ARCHITECT AND ENGINEER.
2. REFER TO ARCHITECTURAL DRAWINGS FOR EXACT LOCATION AND MOUNTING INSTRUCTIONS FOR ALL LIGHT FIXTURES. NOTIFY THE ARCHITECT IMMEDIATELY FOR ANY DISCREPANCIES BETWEEN THESE DRAWINGS AND LOCATION OF DEVICES AND/OR FIXTURES.
3. WHEN SPECIFIC LIGHT FIXTURES HAVE BEEN SPECIFIED IN THE PROJECT SCHEDULE, ELECTRICAL SHALL PROVIDE COMPLETE ASSEMBLY, INCLUDING ALL PARTS AND HARDWARE TO INSURE PROPER FUNCTIONING FIXTURE.
4. ALL CONDUCTORS SHALL BE #12 AWG UNLESS NOTED OTHERWISE.
5. ALL 120V RINGS LONGER THAN 60 FEET SHALL BE #10 AWG AND 277V RINGS LONGER THAN 150 FEET SHALL BE #10 AWG UNLESS NOTED OTHERWISE.
6. ALL CONDUCTORS SHALL BE COPPER.
7. WHERE CONDUCTOR SIZES ARE NOTED ON DRAWINGS, THAT WIRE SIZE SHALL BE THROUGH THE ENTIRE RUN UNLESS OTHERWISE NOTED.
8. MOUNTED LIGHT SWITCHES 48" AFF UNLESS NOTED OTHERWISE ON ARCHITECTURAL DRAWINGS.
9. EACH MULTI-GANGED BOX SHALL HAVE A COMMON SEAMLESS FACEPLATE. WHERE MORE THAN SIX (6) SWITCHES ARE SHOWN AT ONE (1) LOCATION, ADDITIONAL MULTI-GANGED BOXES SHALL BE STACKED AS POSSIBLE AND THE MOUTH OF THE MULTI-GANGED SHALL BE AS EVEN AS POSSIBLE.
10. EACH DIMMER SWITCH SHALL HAVE A WAITING RATING 25% HIGHER THAN THE TOTAL WATTAGE OF ALL LIGHTS TO BE CONTROLLED BY THE DIMMER. DIMMER SIZES 600, 1000, 1500, AND 2000 WATTS. LUTRON NOVA T-STAR. WHERE SWITCHES ARE GANGED WITH DIMMERS, THE SWITCHES SHALL ALSO BE LUTRON NOVA T-STAR. FLORESCENT AND LOW VOLTAGE DIMMERS SHALL BE LUTRON NOVA T-STAR.
11. WHERE FLORESCENT FIXTURES ARE SHOWN TO BE DIMMED, THE FIXTURES SHALL HAVE DIMMING TYPE BALLASTS WHICH ARE COMPATIBLE WITH THE SPECIFIED DIMMERS.
12. WHERE LED FIXTURES/LAMPS ARE SHOWN TO BE DIMMED, THE DIMMER PROVIDED SHALL BE COMPATIBLE WITH THE FIXTURE/LAMP SPECIFIED OR PROVIDE.
13. ALL EMERGENCY LIGHT FIXTURES SHALL HAVE 90 MINUTE BATTERY BACK-UP.
14. ALL EMERGENCY LIGHT FIXTURES SHALL HAVE 90 MINUTE BATTERY BACK-UP WITH INTEGRAL TEST BUTTON AND SHALL BE INSTALLED IN ACCORDANCE WITH NEC 410.136.
15. ALL FLORESCENT FIXTURES THAT UTILIZE DOUBLE ENDED LAMPS AND CONTAIN BALLASTS SHALL BE PROVIDED WITH A DISCONNECTING MEANS IN ACCORDANCE WITH NEC 410.136.

LEGEND

	EMERGENCY LIGHT FIXTURE - WALL MOUNTED		ELECTRIC PANEL BOARD
	EXIT LIGHT FIXTURE - WALL MOUNTED		CIRCUIT HOME RUN
	EXIT LIGHT FIXTURE - CEILING MOUNTED		SWITCHED CIRCUIT
	LED WALL MOUNTED LIGHT FIXTURE WITH 40 MIN. BACK-UP		UNSWITCHED CIRCUIT
	RECESSED CEILING LIGHT FIXTURE (9 BULB)		WALL MTD SPEAKER - FOR RATED WALLS WHERE INDICATED
	PENDANT LIGHT FIXTURE		CLING MTD SPEAKER - FOR RATED CEILING WHERE INDICATED
	WALL MOUNTED LIGHT FIXTURE		EXTEND TO RINGERS (NOT SHOWN - SEE NOTE)
	LED EXTERIOR FLOOD LIGHT (PHE - PHOTO DIMMER)		LIGHT SWITCH - 120V COMMERCIAL GRADE
	EXHAUST FAN - SEE MECH		LIGHT SWITCH - 30VA 120V COMMERCIAL GRADE

DAMMON ENGINEERING, INC.
LOUISIANA & MISSISSIPPI

Chief Engineer: Brian Mistich, PE
554 Old Spanish Trail
Slidell, LA 70458

www.dammonengineering.com
info@dammonengineering.com
PH: 985.649.5832 F: 985.641.5950



W B A Y C I B A P T I S T

1941 SULLIVAN DR.
SLIDELL, LA 70460

JOB No: 2274 DATE: 05/12/2016

DRAWN BY: KHM CHECKED BY: BAM

REVISIONS

#	DESCRIPTION	DATE

SHEET TITLE:
LIGHTING PLAN

DRAWING NUMBER:
E101

SHEET No. 15 OF 17