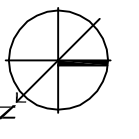
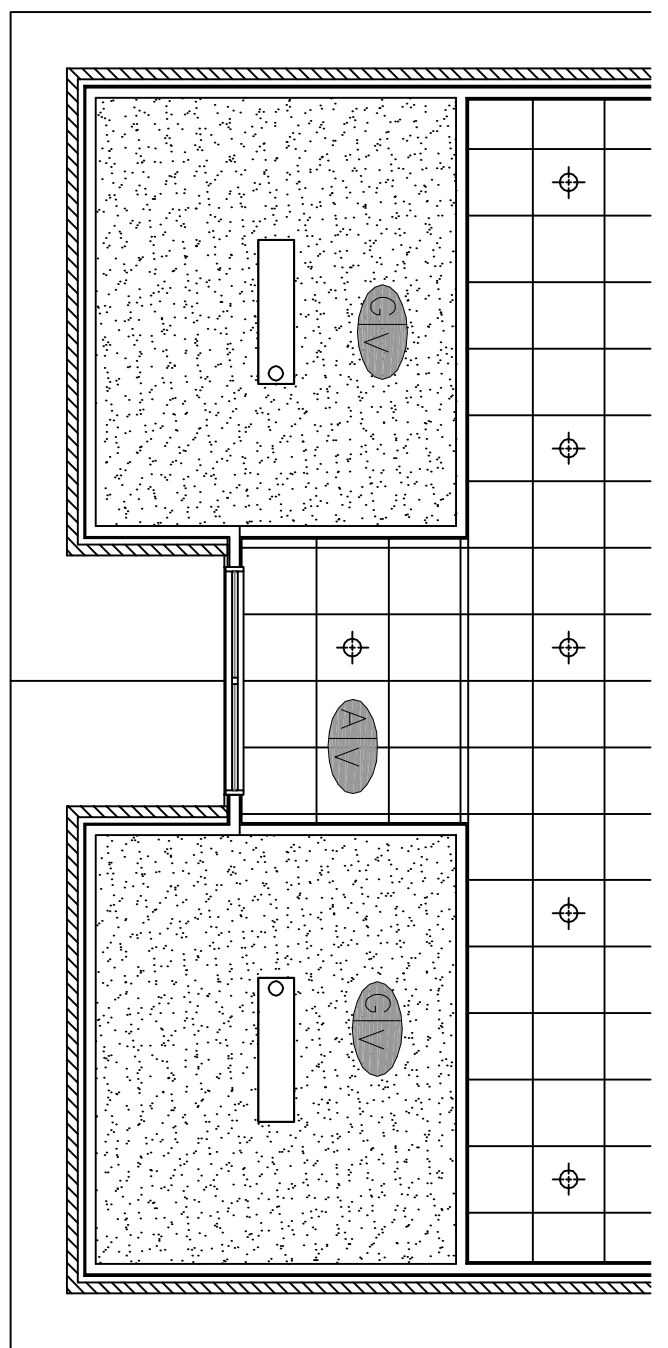
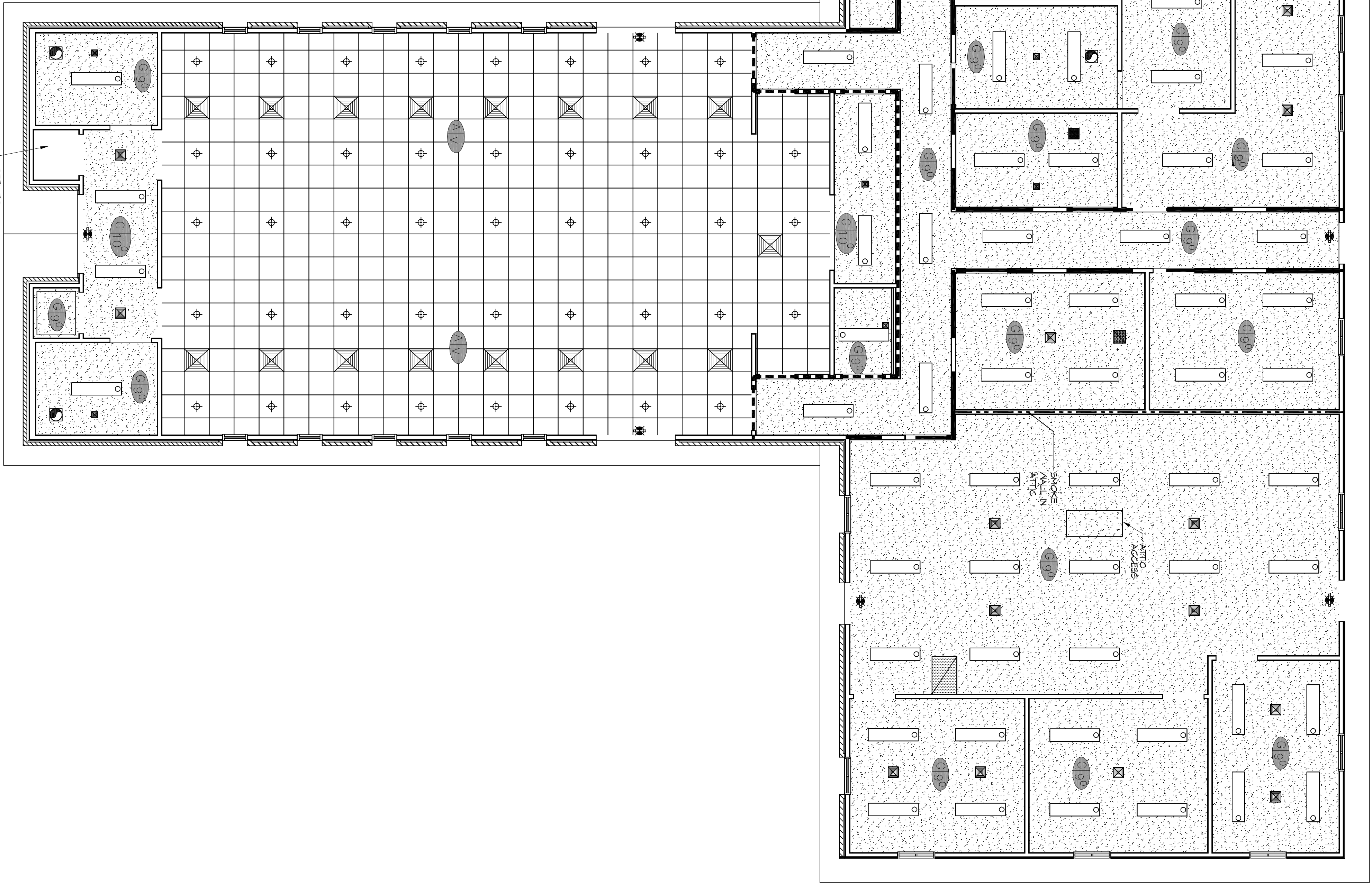


**2 LEVEL 2 RCP**  
SCALE: 3/16"=1'-0"



**1 LEVEL 1 REFLECTED CEILING PLAN**  
SCALE: 3/16"=1'-0"



**GENERAL RCP NOTES**

1. MECHANICAL NEZARINE REFLECTED CEILING PLAN NOT SHOWN. NO FINISHED CEILING ASSEMBLY TO BE PROVIDED AND IS OPEN TO EXPOSED STRUCTURE. SEE SHEET E101 FOR LIGHT FIXTURE TYPES AND LOCATIONS.
2. ALL CEILING HEIGHTS INDICATED ARE APPROXIMATE. ACTUAL CEILING HEIGHT TO BE DETERMINED BY STRUCTURE ELEVATION AND CEILING ASSEMBLY THICKNESS. INDICATED HEIGHT IS MEASURED ABOVE FINISH FLOOR (AFF).
3. REFER TO SHEET A501 FOR WALL/PARTITION ASSEMBLY AND INFORMATION.
4. SEE SHEET E101 FOR LIGHT FIXTURE TYPES. SEE SHEET M101 FOR DIFFUSER AND GRILLE TYPES.
5. REFER TO INTERIOR ELEVATIONS FOR MOUNTING HEIGHT OF WALL MOUNTED LIGHT FIXTURES.

**RCP LEGEND**

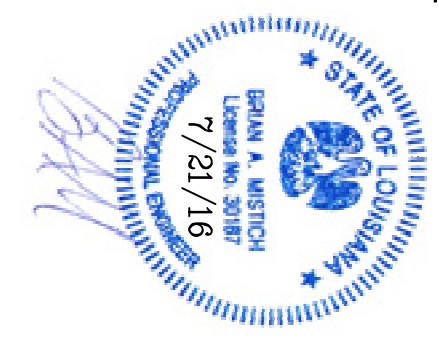
SYMBOL	DESCRIPTION
	2x4 SURFACE MOUNTED FLUORESCENT LIGHT FIXTURE
	1x4 SUSPENDED HIGH BAY LIGHT FIXTURES
	SURFACE MOUNTED FLUORESCENT LIGHT FIXTURE STRIP
	DIRECTIONAL SPOTLIGHT
	RECESSED CAN LIGHT FIXTURE
	EXHAUST FAN
	HVAC SUPPLY AIR DIFFUSER
	HVAC RETURN AIR GRILL
	GYPSON BOARD CEILING (GMB)
	CEILING TYPE/HEIGHT (G-GYB BF, A-ACT, V-VARIES) SEE FINISH SCHEDULE FOR MORE DETAILS

**DAMMON ENGINEERING, INC.**  
LOUISIANA & MISSISSIPPI

Chief Engineer: Brian Mstich, PE  
554 Old Spanish Trail  
Slidell, LA 70458

www.dammonengineering.com  
info@dammonengineering.com  
PH: 985.649.5832 F: 985.641.5950

REVISIONS	
#	DESCRIPTION



**BAYOU BAPTIST CHURCH**

1341 SULLIVAN DR.  
SLIDELL, LA 70460

JOB No: 2274 DATE: 07/21/2016

DRAWN BY: JTL CHECKED BY: JMS

The above drawings are specific to this project and are not to be reproduced or used in connection with any work or project other than the specific project for which they have been prepared and approved without written consent of Dammon Engineering. Please contact with those drawings or specifications shall constitute an acknowledgment of the same.

**A104**

REFLECTED CEILING PLAN

10 OF 17